



Fisheries and Oceans
Canada

Pêches et Océans
Canada

Canadian
Coast Guard

Garde côtière
canadienne

NOTICES TO MARINERS PUBLICATION EASTERN EDITION

MONTHLY EDITION N°10
October 25, 2019



Safety First, Service Always

Published Monthly by the
CANADIAN COAST GUARD
www.notmar.gc.ca/subscribe

CONTENTS

	Page
Section 1	General and Safety Information..... 1 - 12
Section 2	Chart Corrections..... 13 - 24
Section 3	Radio Aids to Marine Navigation Corrections N/A
Section 4	Sailing Directions and Small Craft Guide Corrections..... 26 - 28
Section 5	List of Lights, Buoys and Fog Signals Corrections..... 29 - 33

Notices to Mariners Publication
Eastern Edition
Monthly Edition N°10/2019

Published under the authority of:
Canadian Coast Guard Programs
Aids to Navigation and Waterways
Fisheries and Oceans Canada
Montreal, Quebec
H2Y 2E7

© Her Majesty the Queen in Right of Canada, 2019
DFO/2019-2028
Fs152-5E-PDF
ISSN 1719-7678

Available on the Notices to Mariners website:
www.notmar.gc.ca

Disponible en français :
Publication des Avis aux navigateurs
Édition de l'Est
Édition mensuelle N°10/2019

EXPLANATORY NOTES

Geographical positions refer directly to the graduations of the largest scale Canadian Hydrographic chart unless otherwise indicated.

Bearings refer to the true compass and are measured clockwise from 000° (North) clockwise to 359°; those relating to lights are from seaward.

Visibility of lights is that in clear weather.

Depths - The units used for soundings (metres, fathoms or feet) are stated in the title of each chart.

Elevations are normally given above Higher High Water, Large Tide unless otherwise indicated.

Distances may be calculated as follows:

1 nautical mile = 1,852 metres (6,076.1 feet)

1 statute mile = 1,609.3 metres (5,280 feet)

1 metre = 3.28 feet

Temporary & Preliminary Notices are indicated by a (T) or a (P) in Section 1, respectively. Please note that Nautical charts are not amended by the Canadian Hydrographic Service for Temporary (T) and Preliminary (P) Notices. It is recommended that mariners chart these corrections in pencil. The list of charts affected by Temporary and Preliminary Notices are revised and promulgated quarterly in Section 1 of the Monthly Edition.

Please note that, in addition to the temporary and preliminary changes normally advertised as (T) and (P) Notices, there are a few permanent changes to aids to navigation that have been advertised as Preliminary Notices to Mariners while charts are being updated for new editions.

Marine Information Report & Suggestion Sheet

Mariners are requested to notify the responsible authorities when new or suspected dangers to navigation are discovered, changes observed in aids to navigation or corrections to publications are seen to be necessary. Such communications can be made using the *Marine Information Report & Suggestion Sheet* inserted on the last page of each monthly edition of *Notices to Mariners*.

Canadian Hydrographic Service – Information Published in Section 2 of *Notices to Mariners*

Mariners are advised that only the most critical changes that directly affect safety to navigation are issued in Section 2 – Chart Corrections. This limitation is required to ensure that charts remain as clear and easy to read as possible. As a result, mariners may see minor discrepancies of a non-critical nature between information in official publications. For example, a small change in the nominal range or focal height of a light may not result in the production of a chart correction in *Notices to Mariners*, but may result in a correction in the *List of Lights, Buoys and Fog Signals* publication.

In case of discrepancy between information provided on CHS charts relating to aids to navigation, and the *List of Lights, Buoys and Fog Signals* publication, the latter shall be deemed as containing the most up-to-date information.

Canadian Nautical Charts & Publications

A source list of Canadian nautical charts and publications is published in Notice No. 14 of the *Notices to Mariners Annual Edition 2019*. The source supply and the prices effective at the time of printing are listed. For current chart edition dates, please refer to the following website: www.chs-shc.gc.ca/charts-cartes/paper-papier/index-eng.asp

CHART CORRECTIONS – SECTION 2

Corrections to nautical charts will be listed in numerical order by chart number. Each chart correction listed applies only to that particular chart. Related charts, if any, will have their own specific correction listed separately.

Users should also refer to CHS *Chart 1: Symbols, Abbreviations and Terms* for additional information pertaining to the correction of charts.

The illustration below describes the elements that will comprise a typical Section 2 chart correction:

	Chart Number	Chart Title	Charts latest new edition date	Horizontal Chart Datum	Last Correction
Weekly chart correction date	1202	Cap Eternité à/to Saint-Fulgence – New Edition – 20-MAY-94 – NAD 1927			
	6-Aug-1999				LNM/D 23-Jul-1999
	Add	light Fl G		48°26'36.4"N 70°53'08.6"W	
		(See Chart No 1 P24)	(F2007-107) LL (700)	DFO(6829264-01)	
	Chart action	Chart No 1 reference no.	CCG reference no.	List of light no.	CHS reference no.

The last correction number is identified with the **LNM/D** or Last Notice to **Mariners Number / Date**.

NOTICES TO MARINERS WEBSITE – MONTHLY EDITIONS, CHART CORRECTIONS, AND CHART PATCHES

The Notices to Mariners website allows users to access the [monthly publications](#), [chart corrections](#), and [chart patches](#).

Users can subscribe for free to the [email notification service](#) to receive notifications when charts of interest are updated, including their patches, as well as when a new monthly edition becomes available online.

In addition, the monthly publication and related files to download, such as chart patches and *Sailing Directions* diagrams, can be obtained all together through the download of a single ZIP file.

ADVISORY NAVIGATIONAL WARNINGS / NOTICES TO SHIPPING

The Canadian Coast Guard is implementing a number of changes to the aids to navigation system in Canada.

These changes are advertised as Navigational Warnings, formerly called Notices to Shipping¹, that are broadcast by the Canadian Coast Guard, and are then followed up with Notices to Mariners, then charts are updated by hand correction, reprints or new editions.

Mariners are advised that all relevant Navigational Warnings (NAVWARNs) should be kept until superseded by Notices to Mariners or through revised charts issued by the Canadian Hydrographic Service (CHS).

Navigational Warnings are accessible on the applicable regional page on the Canadian Coast Guard e-Navigation Maritime Information Portal at <http://www.marinfo.gc.ca/e-nav>.

The Canadian Hydrographic Service is reviewing the impact of these changes with the Canadian Coast Guard and together are preparing an action plan on the issuing of chart revisions.

For further information, contact your regional Navigational Warning (NAVWARN) Issuing Desk.

Atlantic Region

* Port aux Basques MCTS Centre

Canadian Coast Guard
49 Stadium Rd.
P.O. Box 99
Port aux Basques, NL A0M 1C0

Telephone: (709) 695-2168 or 1-800-563-9089
Facsimile: (709) 695-7784

Email: NAVWARN.MCTSPortAuxBasques@innav.gc.ca
Website: <http://www.marinfo.gc.ca/e-nav>

* Sydney MCTS Centre

Canadian Coast Guard
1190 Westmount Road
Sydney, NS B1R 2J6

Telephone: (902) 564-7751 or 1-800-686-8676
Facsimile: (902) 564-7662

Email: NAVWARN.MCTSSydney@innav.gc.ca
Website: <http://www.marinfo.gc.ca/e-nav>

Central & Arctic Region

* Prescott MCTS Centre

Canadian Coast Guard
401 King Street West
P.O. Box 1000
Prescott, ON K0E 1T0

"C" and "Q" Series
Telephone: (613) 925-0666
Facsimile: (613) 925-4519

Email: NAVWARN.MCTSPrescott@innav.gc.ca
Website: <http://www.marinfo.gc.ca/e-nav>

* Iqaluit MCTS Centre

Operational from approximately mid-May until late December.

Canadian Coast Guard
P.O. Box 189
Iqaluit, NU X0A 0H0

"A" Series
Telephone: (867) 979-5269

"H" Series
Telephone: (867) 979-0310

Facsimile: (867) 979-4264
Email: NAVWARN.MCTSIqaluit@innav.gc.ca
Website: <http://www.marinfo.gc.ca/e-nav>

* Service available in English and French.

¹ The expression "Notice to Shipping" was changed to "Navigational Warning" in January 2019.

INDEX

SECTION 1 – GENERAL AND SAFETY INFORMATION	1
Transport Canada – Restricted Speed Area - St. Clair and Detroit Rivers	1
Saguenay–St. Lawrence Marine Park and Surrounding Waters – Whale Protection	1
Saguenay–St. Lawrence Marine Park – Beluga Whale Protection: Slowdown Area at the Mouth of the Saguenay Fjord and Area Closure at Baie Sainte-Marguerite	2
Important Amendment: Gulf of St. Lawrence – Protection of the North Atlantic Right Whale	5
*1001 Canadian Coast Guard - List of Charts and Reference Charts (Section 1) Affected by Temporary and Preliminary Notices	9
*1002 Playgreen Lake to/au Little Playgreen Lake – Unlit Buoys Repositioned.....	9
*1003(P) Little Bay Arm and Approaches / et les approches – Notice of Proposed Changes	10
*1004(P) Harbours in Placentia Bay / Havres dans Placentia Bay: Petit Forte to / à Broad Cove Head – Light Buoys to be Discontinued	11
*1005(P) Presque Harbour to / à Bar Haven Island and / et Paradise Sound – Light Buoy to be Discontinued	11
*1006(P) Twillingate Harbours – Light Buoy to be Discontinued	12
SECTION 2 – CHART CORRECTIONS	13
SECTION 3 – RADIO AIDS TO MARINE NAVIGATION CORRECTIONS	N/A
SECTION 4 – SAILING DIRECTIONS AND SMALL CRAFT GUIDE CORRECTIONS	26
SECTION 5 – LIST OF LIGHTS, BUOYS AND FOG SIGNALS CORRECTIONS	29

NUMERICAL INDEX OF CANADIAN CHARTS AFFECTED

Chart No.	Page	Chart No.	Page	Chart No.	Page	Chart No.	Page
1310	13	4615	11, 29				
1514	13	4617	29				
2000	13	4619	11, 29				
2067	13, 33	4625	19, 20, 29				
2077	13	4626	20				
2086	13	4641	30				
2181	13, 14	4642	21, 29				
2300	14	4643	21				
2303	14	4653	21				
2312	14, 33	4823	30				
4000	14	4827	22				
4001	14, 15	4832	22, 30				
4006	15	4841	22, 29				
4011	15	4861	23				
4012	15	4866	30, 31				
4013	16	4881	30				
4049	16	4886	12				
4230	16	4909	23, 32, 33				
4236	16, 17, 31	4935	32				
4241	31	6263	9				
4243	17	7011	23				
4266	17, 31	7776	23				
4320	17	7784	23				
4425	17, 18	8012	24				
4454	18	8013	24				
4467	18						
4474	19						
4509	30						
4523	10						
4530	30						

TRANSPORT CANADA – RESTRICTED SPEED AREA - ST. CLAIR AND DETROIT RIVERS

(Recurrent publication of notice *1103/12, originally published in the *Notices to Mariners Publication - Eastern Edition 11/2012*.)

Since November 14, 2012, the restricted speed area currently in place as per the St. Clair and Detroit River Navigation Safety Regulations between the Detroit River light and Peche Island light is reduced in size by relocating the southern point of the restricted speed area from its current location at the Detroit River light to a new location at Bar Point light D33.

SAGUENAY–ST. LAWRENCE MARINE PARK AND SURROUNDING WATERS – WHALE PROTECTION

(Recurrent publication of notice *413/19, originally published in the *Notices to Mariners Publication - Eastern Edition 04/2019*.)

The waters in and around the Saguenay–St. Lawrence Marine Park are well known for the resident endangered beluga population and the wide diversity of whales that migrate there to feed, particularly between April and November.

REGULATORY PROTECTION MEASURES

All whale species that are found in the St. Lawrence are protected under the *Marine Mammal Regulations*, pursuant to the *Fisheries Act*. Within the boundaries of the Marine Park, specific measures are set out in the *Marine Activities in the Saguenay–St. Lawrence Marine Park Regulations*, pursuant to the establishment of the *Saguenay–St. Lawrence Marine Park Act*. Any collision with a marine mammal within the Marine Park must immediately be reported to a park warden at 1-866-508-9888. For collisions that occur outside the Marine Park or for any situation involving a marine mammal that is dead or in trouble, contact the emergency network at 1-877-722-5346 or on VHF channel 16.

For more information on the Saguenay–St. Lawrence Marine Park, see notice 5C of the *Notices to Mariners Annual Edition 2019*.

VOLUNTARY PROTECTION MEASURES

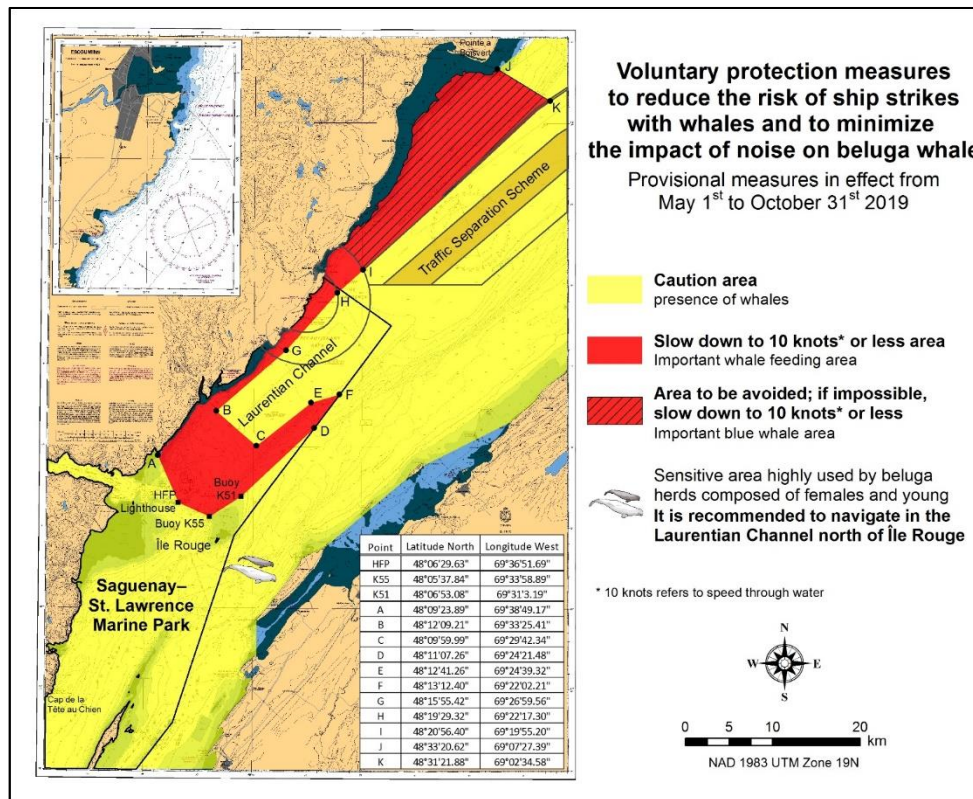
Provisional measures in effect from May 1 to October 31, 2019. See map at the end of this notice.

These measures apply to merchant vessels and cruise ships between Pointe à Boisvert and Cap de la Tête au Chien to prevent collisions with whales. These measures should only be taken when they will not jeopardize navigational safety.

Caution area (yellow area): To reduce the risk of collisions with whales that can be present anywhere in this area, heightened vigilance of navigators is critical. Posting a lookout is recommended in order to increase the chances of seeing the whales and thus taking necessary measures to avoid them. If bypassing the whales is not possible, slow down and wait for the animals to move away to a distance greater than 400 metres (0.215 nautical miles) before resuming original speed. It is more difficult to see the animals at night therefore increased caution is recommended.

Slow down to 10 knots or less area (red area): To reduce the risk of collisions with whales in this feeding area, it is recommended that vessels slow down to a maximum speed through the water of 10 knots and post a lookout. It is further recommended to remain in the Laurentian Channel to the north of Île Rouge to minimize the impact of noise in a sensitive area south of this island, which is highly frequented by herds of beluga whales composed of females and young.

Area to be avoided (hatched red area): To reduce noise and the risk of collisions with whales, vessels should avoid transiting through this area which is highly frequented by blue whales, an endangered species. If the area cannot be avoided, slow down to a speed through the water of 10 knots or less.



SAGUENAY-ST. LAWRENCE MARINE PARK – BELUGA WHALE PROTECTION: SLOWDOWN AREA AT THE MOUTH OF THE SAGUENAY FJORD AND AREA CLOSURE AT BAIE SAINTE-MARGUERITE

(Recurrent publication of notice *414/19, originally published in the *Notices to Mariners Publication - Eastern Edition 04/2019*.)

The Saguenay–St. Lawrence Marine Park and its surrounding area are at the heart of endangered beluga whale critical summer habitat. Marine mammal protection measures have been put in place in accordance with the *Marine Activities in the Saguenay–St. Lawrence Marine Park Regulations* within the limits of the Marine Park.

However, important feeding, calving and rearing areas for beluga whales require greater protection to ensure the recovery of the species. The portion of the Saguenay situated between the mouth of the Fjord and Baie Sainte-Marguerite is one of the areas most used by females and their young from May to October. The mouth of the Saguenay is known as a feeding ground and Baie Sainte-Marguerite as a calving and rearing area.

In order to prevent collisions with beluga whales, a compulsory 15-knot slowdown area is in effect from May 1st to October 31st at the mouth of the Saguenay. To ensure tranquility for female belugas and their young during the critical calving period, access to Baie Sainte-Marguerite is prohibited to all vessels from June 21st to September 21st, except for special authorizations (see description below).

For safety reasons, these measures do not apply to cargo ships (see the monthly edition of *Notice to Mariners* from May to October for voluntary protection measures in the St. Lawrence Estuary). An enhanced vigilance is, however, recommended to all navigators between the mouth of the Saguenay Fjord and Baie Sainte-Marguerite for the protection of beluga whales.

For more information on the Saguenay–St. Lawrence Marine Park, see notice 5C of the *Notices to Mariners Annual Edition 2019* or visit <http://parcmarin.qc.ca/home/>.

REGULATORY PROTECTION MEASURES — BELUGA WHALE

Entire Marine Park Territory:

- When beluga whales are less than half a nautical mile (926 metres) from a motorized vessel, the vessel must maintain a speed of between 5 and 10 knots.
- All vessels, including human-powered vessels (kayaks and canoes), must continue to move forward and maintain their heading.
- All vessels must maintain a minimum distance of 400 metres from beluga whales at all times.

For more information concerning the regulations, consult: <http://marinepark.ca/protect/#regulations>.

Mouth of the Saguenay Fjord (Figure 1) — Slowdown Area (area cross-hatched in red):

- Maximum speed at the mouth of the Saguenay between buoys S7 and S8 and the ferry docks between Baie-Sainte-Catherine and Tadoussac is 15 knots from May 1st to October 31st.

Baie Sainte-Marguerite (Figure 2) — Area Closure (red area):

- From June 21st to September 21st, vessels must not enter the red area, which follows a line between Cap Nord-Ouest and Cap Sainte-Marguerite.
- Special authorizations are granted only for kayaks, canoes and recreational fishermen who must travel without stopping along a corridor within 10 metres of the shore or in shallow areas.

VOLUNTARY PROTECTION MEASURES

Baie Sainte-Marguerite sector (Figure 2) — Transit Area (area cross-hatched in yellow):

- From June 21st to September 21st, navigation in this area is recommended at a speed of between 5 and 10 knots without stopping.

The purpose of this transit area is to favour respect of the *Marine Activities in the Saguenay–St. Lawrence Marine Park Regulations*, since beluga whales are often present in the Baie Sainte-Marguerite sector.

INFORMATION

All incidents, including collisions with whales, must be reported without delay by dialling 1-866-508-9888. For any other situation concerning a marine mammal that is either dead or in trouble, contact the emergency network at 1-877-722-5346, or use VHF channel 16.

Figure 1

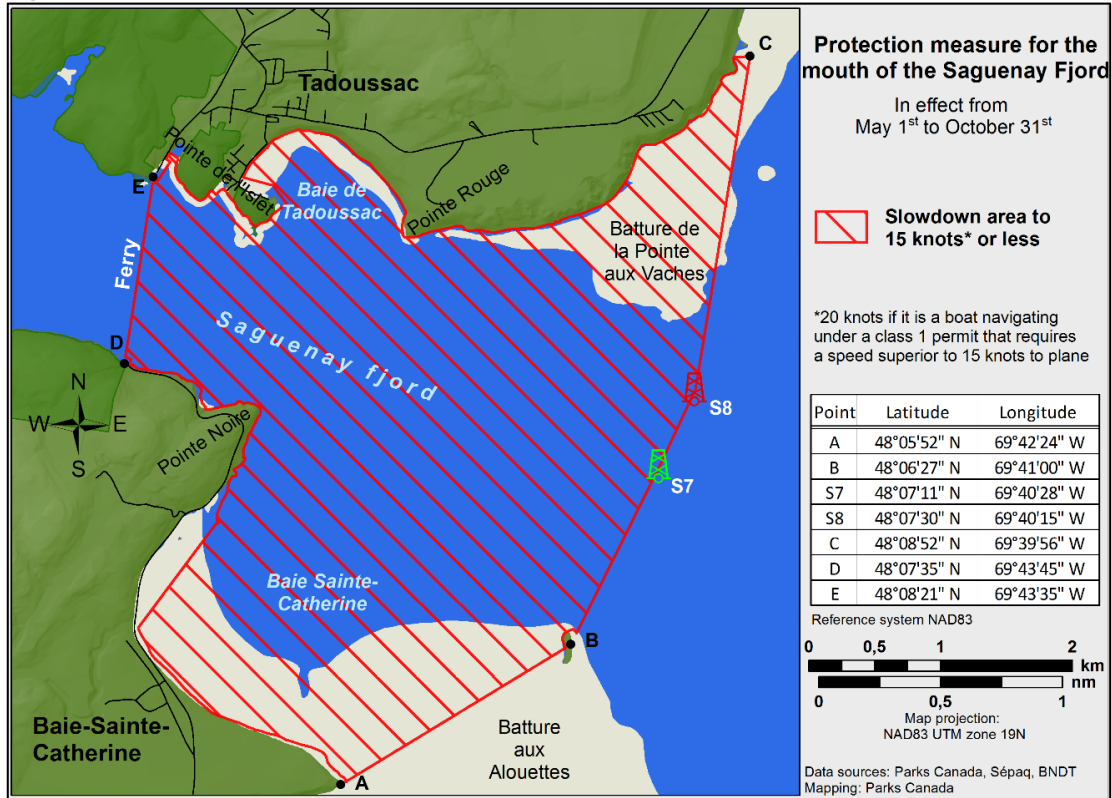
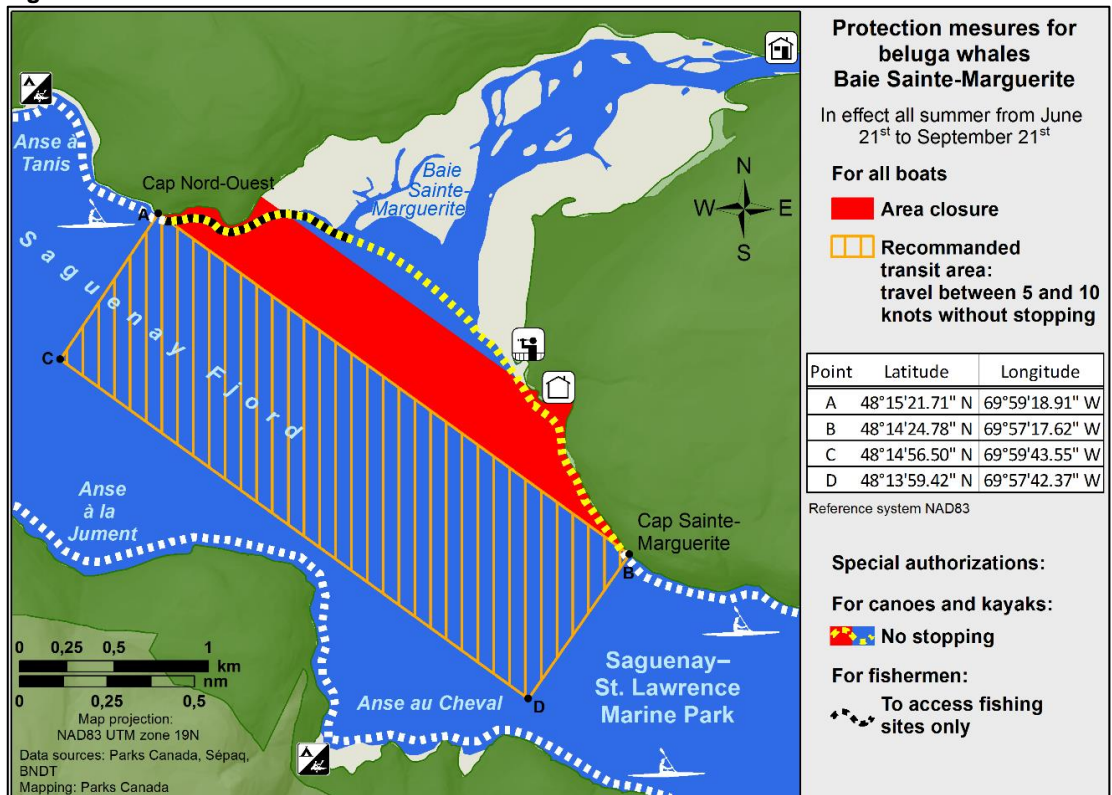


Figure 2



IMPORTANT AMENDMENT: GULF OF ST. LAWRENCE – PROTECTION OF THE NORTH ATLANTIC RIGHT WHALE

(Recurrent publication of notice *801/19, originally published in the *Notices to Mariners Publication - Eastern Edition 08/2019*. It replaces notice *701/19 and includes all major changes, which are highlighted in yellow.)

Due to changing migration of North Atlantic right whales and their increased presence in the Gulf of St. Lawrence, the Government of Canada has established seasonal speed restrictions in specific zones. These restrictions combine “static zones” and “dynamic shipping zones.” [See the map below for details.](#)

Note: Navigational Warnings with these speed restrictions are considered to be Notices to Shipping, which vessels **must follow** under section 7 of the *Collision Regulations*.

Changes to speed restriction zones

In response to consultations with industry, and based on scientific data, we have made two changes to the restriction zone this year, which took effect on April 28, 2019:

- We removed the southeast corner of the speed restriction zone, around the Magdalen Islands.
- To help reduce impacts on the marine shipping industry, we are allowing vessels, in the absence of North Atlantic right whale sightings, to travel at safe speeds in a larger area north of Anticosti Island, extending to the mainland.

In response to the recent deaths in June and July 2019 of 8 NARWs, additional changes have been made to the restriction zone, which took effect on July 9, 2019:

- As the speed restriction in the static zone may be lifted when there are adverse weather conditions forecast in the area, the static zone has been divided in two sections in order to diminish the impact of the lifting of the mandatory speed restriction. This modification will be in effect for the rest of the year.
- Dynamic zone E has been added and the static zones have been extended to cover the area around the new dynamic zone E.
- All speed restrictions apply to vessels above 13 m.

Please refer to the latest NAVWARN issued by the Canadian Coast Guard for all speed restrictions currently in force.

Static zones

In the static zones, **all** vessels above **13 m** in length overall (LOA) must proceed at a speed of not more than 10.0 knots over the ground.

NEW coordinates for the northern static zone:

- 50° 20' N 065° 00' W
- 49° 13' N 065° 00' W
- 48° 40' N 064° 13' W
- 48° 40' N 062° 40' W
- 48° 03' N 061° 07.5' W
- 47° 58.1' N 061° 03.5' W
- 48° 00' N 061° 00' W
- 49° 04' N 061° 00' W
- 49° 04' N 062° 00' W
- 49° 43' N 063° 00' W
- 50° 20' N 063° 00' W

NEW coordinates for the southern static zone:

- 48° 40' N 065° 00' W
- 48° 40' N 062° 40' W
- 48° 00' N 061° 00' W
- 48° 03' N 061° 07.5' W
- 47° 58.1' N 061° 03.5' W
- 47° 10' N 062° 30' W
- 47° 10' N 065° 00' W

Mariners will be notified ahead via a NAVWARN on which of these sections are not subject to a speed restriction, due to inclement weather.

MONTHLY NOTICES TO MARINERS
EASTERN EDITION 10/2019
SECTION 1 – GENERAL AND SAFETY INFORMATION

Within any static zone that is not subject to a speed restriction, mariners may proceed at a safe operational speed. However, we recommend that mariners proceed with extreme caution while transiting in these sections and avoid excessive speed in order to minimize potential strikes with NARWs.

Dynamic shipping zones

The static zone has 5 “dynamic shipping zones”: A, B, C, D and E.

When the Government of Canada determines that North Atlantic right whales do not appear to be in these zones, vessels may transit through them at a safe operational speed.

When we determine that North Atlantic right whales are present in a dynamic zone, vessels above 13 m in length overall (LOA)

- will be notified through a NAVWARN; and
- must proceed at a speed of not more than 10.0 knots over the ground within that zone.

Note: Dynamic shipping zone E is a new zone as of July 2019.

Dynamic zone coordinates

Zone A

- 49° 41' N, 065° 00' W
- 49° 20' N, 065° 00' W
- 49° 11' N, 064° 00' W
- 49° 22' N, 064° 00' W

Zone B

- 49° 22' N, 064° 00' W
- 49° 11' N, 064° 00' W
- 48° 48' N, 063° 00' W
- 49° 00' N, 063° 00' W

Zone C

- 49° 00' N, 063° 00' W
- 48° 48' N, 063° 00' W
- 48° 24' N, 062° 00' W
- 48° 35' N, 062° 00' W

Zone D

- 50° 16' N, 064° 00' W
- 50° 00' N, 064° 00' W
- 49° 56' N, 063° 00' W
- 50° 16' N, 063° 00' W

Zone E

- 48° 35' N, 062° 00' W
- 48° 24' N, 062° 00' W
- 48° 03' N 061° 07.5' W
- 47° 58.1' N 061° 03.5' W
- 48° 00' N, 061° 00' W
- 48° 10.5' N, 061° 00' W

Speed restrictions in the dynamic shipping zones

These speed restrictions will be in effect for 15 days from the date we issue them. We may extend a restriction past the 15 days if North Atlantic right whales continue to be present. Speed restriction zones and sectors will be announced through NAVWARNs.

These restrictions will be in effect from **April 28 to November 15, 2019**. These dates may change, depending on when whales are present.

During this period, vessels above **13 m** in length (LOA) must reduce their speed so as not to exceed 10.0 knots over the ground in the presence of North Atlantic right whales.

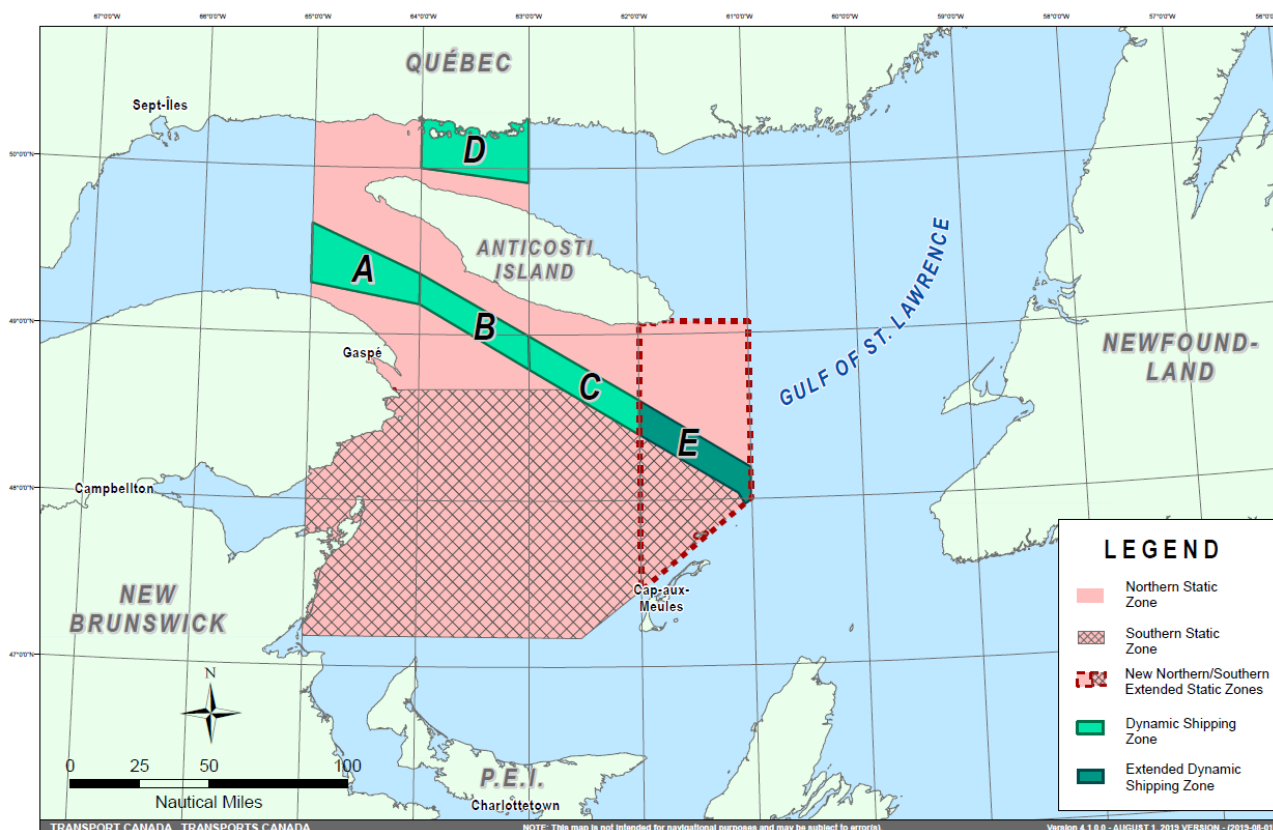
Outside the restriction period, once the mandatory speed restriction is lifted, we ask vessels to reduce their speed voluntarily so as not to exceed 10.0 knots over the ground

- in the presence of North Atlantic right whales; and
- **only** if maritime conditions permit safe operation of their vessel at that speed.

Map of the Gulf of St. Lawrence

The following map shows

- the speed restriction zone, in red (static **zones**); and
- the dynamic shipping **zones**, in green.



Map showing the static restriction area and the five dynamic **zones** (A, B, C, D and E).

Navigational Warnings (NAVWARNs) Broadcasts

The Canadian Coast Guard (CCG) continues to promulgate valid Navigational Warnings via radio broadcasts over various terrestrial systems and also online at <http://www.marinfo.gc.ca/e-nav> or <http://nis.ccg-gcc.gc.ca>. Mariners shall ensure that they have correct and up-to-date information concerning the protection of the North Atlantic right whales as contained in all applicable Notices to Mariners (NOTMARs) and Navigational Warnings.

Canada has replaced its *Notice to Shipping* (NOTSHIP) with *Navigational Warnings* (NAVWARNs). NOTSHIPs are no longer being issued. Mariners and other users will be able to search for NAVWARNs, or subscribe to receive NAVWARNs by email, by visiting the following web page: <http://nis.ccg-gcc.gc.ca/public/rest/messages/en/search>.

Until updates are completed to Canadian nautical charts and publications, *Notice to Shipping* or NOTSHIPS will continue to be referenced. All references to *Notices to Shipping* and to NOTSHIPS must be read as meaning *Navigational Warnings* or NAVWARNs.

Notices to Mariners (NOTMARs) will still be issued as usual and can be searched by visiting the following web page: <https://www.notmar.gc.ca/monthly-mensuel-en.php>.

Aids to Navigation

In addition, CCG continues to test the use of virtual Automatic Identification System aids to navigation (AIS AtoN), referred in NOTMAR 819(T)/2016. These aids will notify a mariner of a dynamic sector that is subject to a speed restriction. Each dynamic sector will be delimited by four virtual AIS AtoN which could be displayed on the ship's navigation equipment such as: ECDIS, ECS, RADAR, Minimum Keyboard Display, and Electronic Nautical Charts. The virtual AIS AtoN will be broadcasted only **when** a speed restriction is in effect in one or more sectors. The mariner is required to select the virtual AIS AtoN symbol to view a message as such: "SectA1 Spd Lim 10 kt." This message refers to a speed restriction in effect for a specific sector. As this system continues to be in the testing phase, it is not the primary means of communicating with the mariner.

Compliance and enforcement

NAVWARNs are enforced in the same way as Notices to Shipping. You must comply with these warnings under section 7 of the *Collision Regulations*.

If you do not comply with any instructions in the NAVWARNs, you could face

- administrative monetary penalties ranging from CAN \$6,000 to CAN \$25,000; and/or
- penal sanctions under the *Canada Shipping Act, 2001*.

If your vessel appears to have violated the speed restriction, Transport Canada Marine Safety inspectors will review all information provided through AIS and seek information from the master.

We will not grant exemptions to the speed restriction in advance. However, Transport Canada will review and consider reasons such as

- navigating to ensure vessel safety;
- weather conditions;
- force majeure (unforeseeable circumstances); and
- responding to emergencies.

Report a North Atlantic right whale sighting

If you see a North Atlantic right whale that is entangled, dead or injured, please report it to your nearest Canadian Coast Guard Marine Communications and Traffic Services Centre, or as follows:

Southern part of the Gulf of St. Lawrence

Marine Animal Response Society
Telephone: 1-866-567-6277

Newfoundland and Labrador

Whale Release and Strandings
Telephone: 1-888-895-3003

For the Québec Sector

Marine Mammal Emergencies
Telephone: 1-877-722-5346

If you see live, free-swimming whales

- Call 1-902-440-8611 (local) or 1-844-800-8568 (toll free)
- Email: XMARWhalesightings@dfo-mpo.gc.ca

Please consult WhaleMap for the latest right whale observations:

<https://whalemap.ocean.dal.ca/>

MONTHLY NOTICES TO MARINERS
EASTERN EDITION 10/2019
SECTION 1 – GENERAL AND SAFETY INFORMATION

***1001 CANADIAN COAST GUARD - LIST OF CHARTS AND REFERENCE CHARTS (SECTION 1) AFFECTED BY TEMPORARY AND PRELIMINARY NOTICES**

**IN EFFECT OCTOBER 25, 2019
(REVISED AND PROMULGATED QUARTERLY)**

2017	909(T)/14 709(T)/18	4236	811(P)/19
2044	1005(T)/15	4379	812(P)/19
2058	809(T)/18	4426	716(T)/19 907(P)/19 908(P)/19 909(P)/19
2060	814(T)/16	4523	1003(P)/19
2067	1218(T)/16	4592	813(P)/19
2077	1011(T)/16	4615	1004(P)/19
2085	1205(T)/17 417(T)/19	4619	1005(P)/19
2086	1219(T)/16	4825	910(P)/19
2123	309(T)/17	4841	814(P)/19
2181	108(T)/17	4848	911(P)/19
2235	818(T)/16	4855	912(P)/19
2291	816(T)/19	4886	1006(P)/19
2315	515(T)/16	6022	1206(T)/17
3526	815(P)/19	6287	113(T)/17

***1002 PLAYGREEN LAKE TO/AU LITTLE PLAYGREEN LAKE – UNLIT BUOYS REPOSITIONED**

Reference Chart: 6263

The following unlit buoys have been permanently repositioned:

Warrens Landing spar buoy - Playgreen P3 (LL 9682): 53° 54' 24.7"N 097° 57' 31.1"W
 Warrens Landing spar buoy - Playgreen P5 (LL 9683): 53° 54' 19.9"N 097° 57' 38.4"W
 Warrens Landing spar buoy - Playgreen P6 (LL 9684): 53° 54' 10.1"N 097° 57' 55.6"W
 Playgreen Lake spar buoy PP1 (LL 9747): 53° 55' 22.6"N 097° 56' 43.7"W
 Playgreen Lake spar buoy PP5 (LL 9750): 53° 54' 03.7"N 097° 58' 18.7"W

(A2019-013 to 017)

MONTHLY NOTICES TO MARINERS
EASTERN EDITION 10/2019
SECTION 1 – GENERAL AND SAFETY INFORMATION

***1003(P) LITTLE BAY ARM AND APPROACHES / ET LES APPROCHES – NOTICE OF PROPOSED CHANGES**

Reference Chart: 4523

The Canadian Coast Guard proposes to permanently change the following aids to navigation:

LL #	Aid Name	Position	Proposed Changes
336	Tom Cod Rock light buoy DB1	49° 36' 41.9"N 055° 53' 11.3"W	Change from a 0.6 m Spar Can (Long) to a 0.6 m plastic spar.
336.21	Otter Island Shoal light buoy DB2	49° 36' 38.9"N 055° 53' 50.8"W	Change from a 0.6 m Spar Conical (Long) to a 0.6 m plastic spar.
336.25	Little Bay Arm light buoy DB3	49° 36' 10.4"N 055° 54' 34.3"W	Change from a 0.6 m Spar Can (Long) to a 0.3 m plastic spar.
336.26	Otter Island Narrows light buoy DB4	49° 36' 11.9"N 055° 54' 36.3"W	Change from a 0.6 m Spar Conical (Long) to a 0.3 m plastic spar.
336.27	Little Bay Arm light buoy DB5	49° 35' 29.9"N 055° 55' 45.8"W	Change from a 0.6 m Spar Can (Long) to a 0.3 m plastic spar.

Comments on this action are solicited from mariners and other interested parties by January 31, 2020, three months following the initial publication date of October 25, 2019. Following this date, this notice will be cancelled. Comments should be directed to the following:

Superintendent, Aids to Navigation
Canadian Coast Guard
P.O. Box 5667
250 Southside Road
St. John's, NL A1C 5X1
Telephone: (709) 552-6456
Email: renee.pope@dfo-mpo.gc.ca

Any objections raised must state the facts on which they are based and should include supporting information on safety, commerce and public benefit.

(N2019-097)

MONTHLY NOTICES TO MARINERS
EASTERN EDITION 10/2019
SECTION 1 – GENERAL AND SAFETY INFORMATION

***1004(P) HARBOURS IN PLACENTIA BAY / HAVRES DANS PLACENTIA BAY: PETIT FORTE TO / À BROAD COVE HEAD – LIGHT BUOYS TO BE DISCONTINUED**

Reference Chart: 4615

The Canadian Coast Guard proposes to permanently discontinue the following aids to navigation:

Chimmleys light buoy PD2	(LL 53.9)	(47° 17' 36.0"N 054° 49' 30.2"W)
Oderin Harbour Middle light buoy PD4	(LL 53.91)	(47° 17' 37.5"N 054° 48' 55.9"W)
Oderin Harbour Inner light buoy PD6	(LL 53.92)	(47° 17' 37.5"N 054° 48' 26.5"W)

Comments on this action are solicited from mariners and other interested parties by January 31, 2020, three months following the initial publication date of October 25, 2019. Following this date, this notice will be cancelled. Comments should be directed to the following:

Superintendent, Aids to Navigation
Canadian Coast Guard
P.O. Box 5667
250 Southside Road
St. John's, NL A1C 5X1
Telephone: (709) 552-6456
Email: renee.pope@dfo-mpo.gc.ca

Any objections raised must state the facts on which they are based and should include supporting information on safety, commerce and public benefit.

(N2019-094)

***1005(P) PRESQUE HARBOUR TO / À BAR HAVEN ISLAND AND / ET PARADISE SOUND – LIGHT BUOY TO BE DISCONTINUED**

Reference Chart: 4619

The Canadian Coast Guard proposes to permanently discontinue the following aid to navigation:

Merasheen Harbour light and whistle buoy PH (LL 49.5) (47° 23' 25.8"N 054° 22' 15.5"W)

Comments on this action are solicited from mariners and other interested parties by January 31, 2020, three months following the initial publication date of October 25, 2019. Following this date, this notice will be cancelled. Comments should be directed to the following:

Superintendent, Aids to Navigation
Canadian Coast Guard
P.O. Box 5667
250 Southside Road
St. John's, NL A1C 5X1
Telephone: (709) 552-6456
Email: renee.pope@dfo-mpo.gc.ca

Any objections raised must state the facts on which they are based and should include supporting information on safety, commerce and public benefit.

(N2019-100)

***1006(P) TWILLINGATE HARBOURS – LIGHT BUOY TO BE DISCONTINUED**

Reference Chart: 4886

The Canadian Coast Guard proposes to permanently discontinue the following aid to navigation:

Twillingate light buoy DT9 (LL 358.39) (49° 39' 06.0"N 054° 46' 06.0"W)

Comments on this action are solicited from mariners and other interested parties by January 31, 2020, three months following the initial publication date of October 25, 2019. Following this date, this notice will be cancelled. Comments should be directed to the following:

Superintendent, Aids to Navigation
Canadian Coast Guard
P.O. Box 5667
250 Southside Road
St. John's, NL A1C 5X1
Telephone: (709) 552-6456
Email: renee.pope@dfo-mpo.gc.ca

Any objections raised must state the facts on which they are based and should include supporting information on safety, commerce and public benefit.

(N2019-098)

MONTHLY NOTICES TO MARINERS
EASTERN EDITION 10/2019
SECTION 2 – CHART CORRECTIONS

1310 - Section B-C - New Edition - 07-JUN-2019 - NAD 1983

11-OCT-2019

LNMD. 02-AUG-2019

Affix patch
Download Patch - <ftp://ftp.dfo-mpo.gc.ca/patches/pa1310-20190909.pdf>
This notice affects Electronic Navigational Chart: CA579080

45°33'32.0"N 073°31'15.0"W

DFO(6410198-01)

1514 - Carillon à/to L'Original - Sheet/Feuille 1 - New Edition - 22-APR-2016 - NAD 1983

11-OCT-2019

LNMD. 17-NOV-2017

Add submarine cable
(See Chart No. 1, L30.1)

joining 45°36'32.6"N 074°35'12.3"W
45°36'57.7"N 074°35'26.9"W
45°37'03.8"N 074°35'33.9"W
45°37'07.6"N 074°35'40.9"W
45°37'13.7"N 074°35'42.0"W
and 45°37'15.3"N 074°35'43.0"W

This notice affects Electronic Navigational Chart: CA579157

DFO(6410202-02)

2000 - Lake Ontario/Lac Ontario - New Edition - 10-APR-1998 - NAD 1983

11-OCT-2019

LNMD. 05-APR-2019

Amend Iso Y 6s 14m to read Iso G 4s 14m against light
(See Chart No. 1, P16)

43°18'03.6"N 079°47'25.8"W

This notice affects Electronic Navigational Chart: CA273096, CA473519, CA573362

(B2019004) LL(535) DFO(6604564-01)

2067 - Hamilton Harbour - New Edition - 02-NOV-2018 - World Geodetic System 1984

11-OCT-2019

Amend Iso Y 6s 14m 10M to read Iso G 4s 14m 10M against light
(See Chart No. 1, P16)

43°18'03.6"N 079°47'25.8"W

This notice affects Electronic Navigational Chart: CA273096, CA473519, CA573362

(B2019004) LL(535) DFO(6604564-01)

2077 - Lake Ontario/Lac Ontario (Western Portion/Partie Ouest) - New Edition - 23-APR-1999 - NAD 1983

11-OCT-2019

LNMD. 08-FEB-2019

Amend Iso Y 6s 14m to read Iso G 4s 14m against light
(See Chart No. 1, P16)

43°18'04.0"N 079°47'28.0"W

This notice affects Electronic Navigational Chart: CA273096, CA473519, CA573362

(B2019004) LL(535) DFO(6604564-01)

2086 - Toronto to/à Hamilton - Sheet/Feuille 1 - New Edition - 24-MAY-2019 - World Geodetic System 1984

11-OCT-2019

Amend Iso Y 6s 10M to read Iso G 4s 14m 10M against light
(See Chart No. 1, P16)

43°18'03.6"N 079°47'25.8"W

This notice affects Electronic Navigational Chart: CA273096, CA473519, CA573362

(B2019004) LL(535) DFO(6604564-01)

2181 - Wheatley Harbour - New Edition - 11-MAY-2007 - NAD 1983

18-OCT-2019

LNMD. 01-SEP-2017

Add green port hand spar buoy, marked EW3
(See Chart No. 1, Qg)

42°03'34.6"N 082°27'46.0"W

This notice affects Electronic Navigational Chart: CA373090, CA573312

(B2019007) DFO(6604565-01)

MONTHLY NOTICES TO MARINERS
EASTERN EDITION 10/2019
SECTION 2 – CHART CORRECTIONS

Add red starboard hand spar buoy, marked EW4 42°03'34.7"N 082°27'44.9"W
(See Chart No. 1, Qf)
This notice affects Electronic Navigational Chart: CA373090, CA573312
(B2019008) DFO(6604566-01)

2300 - Lake Superior/Lac Supérieur - New Chart - 24-APR-1998 - NAD 1983

04-OCT-2019 LNM/D. 09-MAR-2018
Amend Fl (3) to read Fl against light 48°45'06.4"N 087°33'26.0"W
(See Chart No. 1, P16)
This notice affects Electronic Navigational Chart: CA373066
(D2018012) LL(1117) DFO(6604563-01)

2303 - Jackfish Bay to St. Ignace Island - New Edition - 29-MAY-2015 - US Standard Datum

04-OCT-2019 LNM/D. 17-MAR-2017
Amend Fl (3) 24s 118ft 9M to read Fl 10s 118ft 10M against light 48°45'04.7"N 087°33'26.0"W
(See Chart No. 1, P16)
This notice affects Electronic Navigational Chart: CA373066
(D2018012) LL(1117) DFO(6604563-01)

2312 - Nipigon Bay and Approaches/et les approches - New Edition - 31-MAY-2002 - NAD 1983

04-OCT-2019 LNM/D. 10-OCT-2014
Amend Fl (3) 24s 118ft to read Fl 10s 118ft against light 48°45'04.7"N 087°33'26.0"W
(See Chart No. 1, P16)
This notice affects Electronic Navigational Chart: CA373066
(D2018012) LL(1117) DFO(6604563-01)

4000 - Gulf of Maine to/à Baffin Bay / Baie de Baffin - New Edition - 25-JUL-2003 - NAD 1983

25-OCT-2019 LNM/D. 06-APR-2018
Delete lighted offshore platform with legend "GSF Grand Banks" 46°46'17.4"N 047°59'27.3"W
(See Chart No. 1, P2, L2)
This notice affects Electronic Navigational Chart: CA176030, CA276101
DFO(6308816-01)
Delete obstruction and legend "ODAS/SADO" 48°18'37.9"N 047°17'30.3"W
(See Chart No. 1, K40)
This notice affects Electronic Navigational Chart: CA176030
DFO(6308817-02)

4001 - Gulf of Maine to Strait of Belle Isle / au Detroit de Belle Isle - New Edition - 01-DEC-1995 - NAD 1983

11-OCT-2019 LNM/D. 23-AUG-2019
Delete radar transponder beacon 46°45'41.2"N 056°09'25.5"W
(See Chart No. 1, S3.1/S3.4)
This notice affects Electronic Navigational Chart: CA176030
DFO(6308728-17)
25-OCT-2019 LNM/D. 11-OCT-2019
Add subsurface Ocean Data Acquisition System ODAS/SADO with 48°22'50.3"N 046°31'24.1"W
unknown depth
(See Chart No. 1, L25)
This notice affects Electronic Navigational Chart: CA176030
DFO(6308815-01)

MONTHLY NOTICES TO MARINERS
EASTERN EDITION 10/2019
SECTION 2 – CHART CORRECTIONS

Add	subsurface Ocean Data Acquisition System ODAS/SADO with unknown depth (See Chart No. 1, L25) This notice affects Electronic Navigational Chart: CA176030, CA276101	47°30'46.3"N 047°21'26.5"W	
			<i>DFO(6308815-02)</i>
Add	subsurface Ocean Data Acquisition System ODAS/SADO with unknown depth (See Chart No. 1, L25) This notice affects Electronic Navigational Chart: CA176030, CA276101	47°16'03.4"N 047°07'06.0"W	
			<i>DFO(6308815-03)</i>
Add	subsurface Ocean Data Acquisition System ODAS/SADO with unknown depth (See Chart No. 1, L25) This notice affects Electronic Navigational Chart: CA176030	47°01'23.1"N 046°52'43.4"W	
			<i>DFO(6308815-04)</i>
Delete	lighted offshore platform with legend "GSF Grand Banks" (See Chart No. 1, P2, L2) This notice affects Electronic Navigational Chart: CA176030, CA276101	46°44'39.1"N 047°59'38.1"W	
			<i>DFO(6308816-01)</i>
Delete	obstruction, depth unknown (See Chart No. 1, K40) This notice affects Electronic Navigational Chart: CA176030, CA276477	48°19'07.9"N 046°17'31.1"W	
			<i>DFO(6308817-01)</i>
Delete	obstruction and legend "ODAS/SADO" (See Chart No. 1, K40) This notice affects Electronic Navigational Chart: CA176030	48°18'37.9"N 047°17'30.3"W	
			<i>DFO(6308817-02)</i>
 4006 - Newfoundland and Labrador/Terre-Neuve-et-Labrador to Bermuda / aux Bermudes - New Edition - 08-AUG-2003 - NAD 1983			
18-OCT-2019			LNMD. 06-SEP-2019
Reposition	yellow ODAS/SADO lighted super-buoy, marked 41001 (See Chart No. 1, Q58)	from 34°35'19.7"N 072°40'32.2"W to 34°30'06.0"N 072°31'18.0"W	<i>DFO(6308811-01)</i>
 4011 - Approaches to / Approches à Bay of Fundy / Baie de Fundy - New Edition - 03-JAN-2003 - NAD 1983			
25-OCT-2019			LNM/D. 31-MAY-2019
Add	yellow ODAS/SADO lighted pillar buoy FI (5) Y 20s, marked 4400490 (See Chart No. 1, Q58) This notice affects Electronic Navigational Chart: CA276206	44°39'53.3"N 066°21'52.2"W	
			<i>DFO(6308813-01)</i>
 4012 - Yarmouth to / à Halifax - New Edition - 14-FEB-2003 - NAD 1983			
25-OCT-2019			LNM/D. 23-AUG-2019
Add	yellow ODAS/SADO lighted pillar buoy FI (5) Y 20s, marked 4400490 (See Chart No. 1, Q58) This notice affects Electronic Navigational Chart: CA276206	44°39'53.3"N 066°21'52.2"W	
			<i>DFO(6308813-01)</i>

MONTHLY NOTICES TO MARINERS
EASTERN EDITION 10/2019
SECTION 2 – CHART CORRECTIONS

4013 - Halifax to / à Sydney - New Edition - 06-SEP-2002 - NAD 1983

25-OCT-2019

LNMD. 13-SEP-2019

Amend ON CERTAIN COPIES
Guysboroug to read Guysborough
(See Chart No. 1, D3)
This notice affects Electronic Navigational Chart: CA276204

45°23'53.7"N 061°28'30.6"W

DFO(6308814-01)

4049 - Grand Bank, Northern Portion / Grand Banc, Partie Nord to / à Flemish Pass / Passe Flamande - New Edition - 19-MAY-1995 - NAD 1983

25-OCT-2019

LNMD. 08-MAR-2019

Add subsurface Ocean Data Acquisition System ODAS/SADO with
unknown depth
(See Chart No. 1, L25)
This notice affects Electronic Navigational Chart: CA176030, CA276101

47°30'46.3"N 047°21'26.5"W

DFO(6308815-02)

Add subsurface Ocean Data Acquisition System ODAS/SADO with
unknown depth
(See Chart No. 1, L25)
This notice affects Electronic Navigational Chart: CA176030, CA276101

47°16'03.4"N 047°07'06.0"W

DFO(6308815-03)

Delete lighted offshore platform, Mo(U) 15M, Fog Sig 30s with legend
"GSF Grand Banks"
(See Chart No. 1, P2, L2, R20)
This notice affects Electronic Navigational Chart: CA176030, CA276101

46°44'39.1"N 048°00'36.0"W

DFO(6308816-01)

4230 - Little Hope Island to / à Cape St Marys - New Chart - 15-JUN-1990 - NAD 1983

11-OCT-2019

LNMD. 29-JUN-2018

Add wreck Wk with known depth of 16.5 metres
(See Chart No. 1, K26)
This notice affects Electronic Navigational Chart: CA376018

44°03'41.3"N 066°16'05.4"W

DFO(6308803-01)

4236 - Ship Harbour and Approaches / et les approches - New Edition - 13-JUL-2001 - NAD 1983

25-OCT-2019

LNMD. 23-AUG-2019

Add light FI R against red starboard hand spar buoy, marked YM8
(See Chart No. 1, Qf)
This notice affects Electronic Navigational Chart: CA476089

44°46'18.5"N 062°47'55.0"W

(F2019032) LL(586.01) DFO(6308783-01)

4236 - Taylors Head to / à Shut-in Island - New Edition - 13-JUL-2001 - NAD 1983

25-OCT-2019

LNMD. 23-AUG-2019

Affix patch
Download Patch - ftp://ftp.dfo-mpo.gc.ca/patches/4236_Jeddore_Patch.pdf
This notice affects Electronic Navigational Chart: CA376083

44°40'00.0"N 063°00'00.0"W

DFO(6308802-01)

Add depth of 7.7 metres
(See Chart No. 1, I10)
This notice affects Electronic Navigational Chart: CA376083

44°39'49.8"N 063°07'25.2"W

DFO(6308802-03)

MONTHLY NOTICES TO MARINERS
EASTERN EDITION 10/2019
SECTION 2 – CHART CORRECTIONS

4236 - Continuation A - New Edition - 13-JUL-2001 - NAD 1983

25-OCT-2019

LNMD. 23-AUG-2019

- Add light FI R against red starboard hand spar buoy, marked YM8
(See Chart No. 1, Qf)
This notice affects Electronic Navigational Chart: CA476089
44°46'18.5"N 062°47'55.0"W
(F2019032) LL(586.01) DFO(6308783-01)
- Add light FI R against red starboard hand spar buoy, marked YM12
(See Chart No. 1, Qf)
This notice affects Electronic Navigational Chart: CA476089
44°46'57.0"N 062°49'09.3"W
(F2019033) LL(586.03) DFO(6308784-01)
- Add light Q G against green port hand spar buoy, marked YM17
(See Chart No. 1, Qg)
This notice affects Electronic Navigational Chart: CA476089
44°48'08.0"N 062°50'30.1"W
(F2019034) LL(586.07) DFO(6308785-01)
- Add light FI R against red starboard hand spar buoy, marked YM14
(See Chart No. 1, Qf)
This notice affects Electronic Navigational Chart: CA476089
44°47'57.2"N 062°50'10.0"W
(F2019035) LL(586.04) DFO(6308786-01)

4243 - Tusket Islands to / à Cape St Marys - New Edition - 11-OCT-2002 - NAD 1983

11-OCT-2019

LNMD. 09-FEB-2018

- Add wreck Wk with known depth of 16.5 metres
(See Chart No. 1, K26)
This notice affects Electronic Navigational Chart: CA376018
44°03'41.3"N 066°16'05.4"W
DFO(6308803-01)

4266 - Sydney Harbour - New Edition - 28-FEB-2014 - NAD 1983

18-OCT-2019

LNMD. 05-FEB-2016

- Amend (Priv) Iso 4s4m to read (Priv) Iso G 4s4m against light
(See Chart No. 1, P16)
This notice affects Electronic Navigational Chart: CA576095
46°09'00.9"N 060°13'21.0"W
(G2019108) LL(785.84) DFO(6308804-01)
- Amend (Priv) Iso 1s9m to read (Priv) Iso G 4s9m against light
(See Chart No. 1, P16)
This notice affects Electronic Navigational Chart: CA576095
46°08'57.7"N 060°13'27.6"W
(G2019109) LL(785.85) DFO(6308805-01)

4320 - Egg Island to / à West Ironbound Island - New Edition - 26-SEP-1997 - NAD 1983

25-OCT-2019

LNMD. 23-AUG-2019

- Affix patch
Download Patch - ftp://ftp.dfo-mpo.gc.ca/patches/4320_Jeddore_Patch.pdf
44°45'00.0"N 063°00'00.0"W
DFO(6308802-02)

4425 - Covehead Bay - New Edition - 01-NOV-2002 - NAD 1983

11-OCT-2019

LNMD. 26-APR-2019

- Replace depth of 4 feet with drying height of 1 foot
(See Chart No. 1, I10, I15)
46°25'19.2"N 063°08'56.4"W
DFO(6308731-04)

MONTHLY NOTICES TO MARINERS
EASTERN EDITION 10/2019
SECTION 2 – CHART CORRECTIONS

4425 - Savage Harbour - New Edition - 01-NOV-2002 - NAD 1983

11-OCT-2019

LNMD. 26-APR-2019

Replace depth of 3 feet with drying height of 1 foot
(See Chart No. 1, I10, I15) 46°25'46.8"N 062°50'13.8"W

DFO(6308731-05)

Replace depth of 4 feet with drying height of 0 feet
(See Chart No. 1, I10, I15) 46°25'31.8"N 062°50'20.4"W

DFO(6308731-06)

4425 - Tracadie Bay - New Edition - 01-NOV-2002 - NAD 1983

11-OCT-2019

LNMD. 26-APR-2019

Replace depth of 15 feet with drying height of 0 feet
(See Chart No. 1, I10, I15) 46°24'40.8"N 063°02'24.6"W

DFO(6308731-07)

Replace depth of 9 feet with drying height of 0 feet
(See Chart No. 1, I10, I15) 46°24'56.6"N 063°02'26.5"W

DFO(6308731-08)

Replace depth of 23 feet with depth of 3 feet
(See Chart No. 1, I10) 46°24'47.2"N 063°00'33.0"W

DFO(6308731-09)

Delete dredged area with depth of 6 feet (1976)
(See Chart No. 1, I22) 46°24'33.5"N 063°01'47.9"W

DFO(6308731-10)

Add drying height of 1 foot
(See Chart No. 1, I15) 46°24'32.4"N 063°01'46.8"W

DFO(6308731-11)

4454 - Pointe Curlew à/to Baie Washtawouka - New Edition - 16-NOV-2012 - NAD 1983

25-OCT-2019

LNMD. 05-JUL-2019

Affix patch
Download Patch - <ftp://ftp.dfo-mpo.gc.ca/patches/pa4454-20190930.pdf>
This notice affects Electronic Navigational Chart: CA379093

DFO(6410201-01)

4467 - Rustico Bay - New Edition - 10-JAN-2003 - NAD 1983

11-OCT-2019

LNMD. 11-AUG-2017

Delete depth of 7 feet
(See Chart No. 1, I10) 46°27'15.6"N 063°17'58.8"W

DFO(6308731-01)

Add drying height of 1 foot
(See Chart No. 1, I15) 46°27'16.2"N 063°17'59.4"W

DFO(6308731-02)

Replace depth of 9 feet with drying height of 0 feet
(See Chart No. 1, I10, I15) 46°27'21.0"N 063°17'18.6"W

DFO(6308731-03)

MONTHLY NOTICES TO MARINERS
EASTERN EDITION 10/2019
SECTION 2 – CHART CORRECTIONS

4474 - Îles Bun à/to Baie des Moutons - New Edition - 28-MAY-1999 - NAD 1983

25-OCT-2019

LNMD. 28-JUN-2019

Delete	depth of 2 fathoms 4 feet (See Chart No. 1, I10)	50°46'03.8"N 059°01'52.9"W <i>DFO(6410195-01)</i>
Add	depth of 0 fathoms 1 foot (See Chart No. 1, I10)	50°46'05.3"N 059°01'55.4"W <i>DFO(6410195-02)</i>
Add	depth of 0 fathoms 1 foot (See Chart No. 1, I10)	50°46'11.9"N 059°01'40.2"W <i>DFO(6410195-03)</i>
Add	depth of 1 fathom 4 feet (See Chart No. 1, I10, I11)	50°45'54.9"N 059°01'46.4"W <i>DFO(6410195-04)</i>
Add	depth of 0 fathoms 3 feet (See Chart No. 1, I10)	50°45'42.2"N 059°01'34.1"W <i>DFO(6410195-05)</i>

4625 - Burin Peninsula to / à Saint-Pierre - New Edition - 24-JAN-2003 - NAD 1983

11-OCT-2019

LNMD. 08-FEB-2019

Amend	FI 5s 78ft 5M to read FI 5s78ft15M against light (See Chart No. 1, P16)	47°04'28.0"N 055°51'34.0"W <i>LL(102) DFO(6308728-01)</i>
Amend	FI 10s149ft11M to read Iso 10s149ft15M against light (See Chart No. 1, P16)	46°52'47.5"N 056°05'07.5"W <i>LL(100) DFO(6308728-02)</i>
Amend	FI 4s 64ft 12M to read FI 4s64ft16M against light (See Chart No. 1, P16)	46°50'47.7"N 055°47'50.2"W <i>LL(76) DFO(6308728-03)</i>
Amend	FI(2) 10s 158ft 25M to read FI(2) 10s158ft22M against light (See Chart No. 1, P16) This notice affects Electronic Navigational Chart: CA376164	46°45'54.4"N 056°09'14.0"W <i>DFO(6308728-04)</i>
Amend	FI WR 2s 43ft 11M & 8M to read FI WR 2s33ft9M&6M against light (See Chart No. 1, P16) This notice affects Electronic Navigational Chart: CA376164	46°47'55.0"N 056°08'54.2"W <i>DFO(6308728-07)</i>
Reposition	yellow, black and yellow West cardinal lighted pillar whistle buoy Q(9) 15s, WHIS, marked Savoyard-SPM (See Chart No. 1, Q130.3) This notice affects Electronic Navigational Chart: CA376164	from 46°45'25.3"N 056°15'17.3"W to 46°45'25.6"N 056°15'09.1"W <i>DFO(6308728-11)</i>
Reposition	yellow and black South cardinal lighted pillar whistle buoy Q(6) + LFI 15s, WHIS, marked La Marne - SPM (See Chart No. 1, Q130.3) This notice affects Electronic Navigational Chart: CA376164	from 46°43'51.6"N 056°13'20.2"W to 46°43'48.5"N 056°13'13.0"W <i>DFO(6308728-12)</i>

MONTHLY NOTICES TO MARINERS
EASTERN EDITION 10/2019
SECTION 2 – CHART CORRECTIONS

Delete	radar transponder beacon, marked Aero RC (See Chart No. 1, S3.1/S3.4) This notice affects Electronic Navigational Chart: CA376164	46°45'44.9"N 056°10'09.7"W <i>DFO(6308728-15)</i>
Delete	radar transponder beacon, marked R (See Chart No. 1, S3.1/S3.4) This notice affects Electronic Navigational Chart: CA376164	46°46'52.7"N 056°10'49.8"W <i>DFO(6308728-16)</i>
4626 - Saint-Pierre and / et Miquelon (France) - New Edition - 24-JAN-2003 - NAD 1983		
	11-OCT-2019	LNMD. 08-FEB-2019
Amend	FI10s149ft11M to read Iso 10s149ft15M against light (See Chart No. 1, P16)	46°52'47.5"N 056°05'07.5"W <i>LL(100) DFO(6308728-02)</i>
Amend	FI(2) 10s 158ft 25M to read FI(2) 10s158ft22M against light (See Chart No. 1, P16) This notice affects Electronic Navigational Chart: CA376164	46°45'54.4"N 056°09'14.0"W <i>DFO(6308728-04)</i>
Amend	FIWR 2s 43ft 11M&8M to read FI WR 2s33ft9M&6M against light (See Chart No. 1, P16) This notice affects Electronic Navigational Chart: CA376164	46°47'55.0"N 056°08'54.2"W <i>DFO(6308728-07)</i>
Amend	FIWR 4s 167ft 13M & 10M to read FI WR 4s157ft12M&9M against light (See Chart No. 1, P16)	46°49'19.8"N 056°24'06.0"W <i>DFO(6308728-09)</i>
Amend	FIWR(3)15s115ft24M&20M to read FI(3)WR 15s108ft22M&18M against light (See Chart No. 1, P16) This notice affects Electronic Navigational Chart: CA376627	47°06'17.6"N 056°23'54.0"W <i>DFO(6308728-10)</i>
Reposition	yellow and black South cardinal lighted pillar whistle buoy Q(6) + LFI 15s, WHIS, marked La Marne - SPM (See Chart No. 1, Q130.3) This notice affects Electronic Navigational Chart: CA376164	from 46°43'52.9"N 056°13'18.8"W to 46°43'48.5"N 056°13'13.0"W <i>DFO(6308728-12)</i>
Reposition	yellow, black and yellow West cardinal pillar buoy (See Chart No. 1, Q130.3)	from 47°01'54.0"N 056°31'40.5"W to 47°01'52.9"N 056°31'58.1"W <i>DFO(6308728-14)</i>
Delete	radar transponder beacon, marked Aero RC (See Chart No. 1, S3.1/S3.4) This notice affects Electronic Navigational Chart: CA376164	46°45'44.9"N 056°10'09.7"W <i>DFO(6308728-15)</i>
Delete	radar transponder beacon, marked R (See Chart No. 1, S3.1/S3.4) This notice affects Electronic Navigational Chart: CA376164	46°46'52.7"N 056°10'49.8"W <i>DFO(6308728-16)</i>

MONTHLY NOTICES TO MARINERS
EASTERN EDITION 10/2019
SECTION 2 – CHART CORRECTIONS

4642 - Lamaline Harbour - New Edition - 08-NOV-2002 - NAD 1983

11-OCT-2019

LNMD. 06-SEP-2019

Amend FI4s64ft12M to read FI 4s64ft16M against light
(See Chart No. 1, P16) 46°50'48.2"N 055°47'51.3"W
LL(76) DFO(6308728-03)

4643 - Île Saint-Pierre (France) - New Edition - 28-MAR-2003 - NAD 1983

11-OCT-2019

LNMD. 11-JAN-2019

Delete light FI (2) 10s 158ft 25M
(See Chart No. 1, P16) 46°45'56.0"N 056°09'14.0"W
DFO(6308728-05)

Add light FI(2) 10s158ft22M
(See Chart No. 1, P16) 46°45'54.4"N 056°09'14.0"W
DFO(6308728-06)

Amend FI W R 2s 43ft 11M & 8M to read FI WR 2s33ft9M&6M against light
(See Chart No. 1, P16) 46°47'55.0"N 056°08'54.2"W
This notice affects Electronic Navigational Chart: CA376164
DFO(6308728-07)

Amend QR to read FI(2)R 6s against light
(See Chart No. 1, P16) 46°46'51.0"N 056°09'54.0"W
DFO(6308728-08)

Reposition yellow, black and yellow West cardinal lighted pillar whistle buoy
Q(9) 15s, WHIS, marked Savoyard-SPM from 46°45'26.1"N 056°15'14.5"W
(See Chart No. 1, Q130.3) to 46°45'25.6"N 056°15'09.1"W
This notice affects Electronic Navigational Chart: CA376164
DFO(6308728-11)

Reposition black, yellow and black East cardinal lighted pillar whistle buoy
Q(3) 10s, WHIS, marked Grande Basse - SPM from 46°47'13.1"N 056°06'07.0"W
(See Chart No. 1, Q130.3) to 46°47'15.8"N 056°06'04.2"W
DFO(6308728-13)

Delete radar transponder beacon, marked Aero RC 46°45'44.9"N 056°10'09.7"W
(See Chart No. 1, S3.1/S3.4)
This notice affects Electronic Navigational Chart: CA376164
DFO(6308728-15)

Delete radar transponder beacon, marked R 46°46'52.7"N 056°10'49.8"W
(See Chart No. 1, S3.1/S3.4)
This notice affects Electronic Navigational Chart: CA376164
DFO(6308728-16)

Delete yellow and black South cardinal lighted pillar whistle buoy Q(6)+LFI15s,
WHIS, marked La Marne - SPM 46°43'53.2"N 056°13'21.2"W
(See Chart No. 1, Q130.3)
DFO(6308728-18)

4653 - Bay of Islands - New Edition - 30-MAY-2003 - NAD 1983

18-OCT-2019

LNMD. 26-JUL-2019

Delete private yellow ODAS/SADO lighted pillar buoy Oc Y, Priv 49°07'57.0"N 058°15'45.6"W
(See Chart No. 1, Q58)
This notice affects Electronic Navigational Chart: CA476190
(N2019091) LL(197.1) DFO(6308809-01)

MONTHLY NOTICES TO MARINERS
EASTERN EDITION 10/2019
SECTION 2 – CHART CORRECTIONS

4827 - Hare Bay to / à Fortune Head - New Chart - 13-AUG-2004 - NAD 1983

11-OCT-2019 LNM/D. 10-MAY-2019

Amend FI 5s24m5M to read FI 5s24m15M against light 47°04'28.0"N 055°51'34.0"W
(See Chart No. 1, P16) *LL(102) DFO(6308728-01)*

Amend FI WR(3) 15s 35m 24M & 20M to read FI(3)WR 15s33m22M&18M 47°06'17.6"N 056°23'54.0"W
against light
(See Chart No. 1, P16)
This notice affects Electronic Navigational Chart: CA376627 *DFO(6308728-10)*

4832 - Fortune Bay: Southern Portion / Partie Sud - New Chart - 02-OCT-1987 - NAD 1983

11-OCT-2019 LNM/D. 11-JAN-2019

Amend FI5s24m5M to read FI 5s24m15M against light 47°04'28.0"N 055°51'34.0"W
(See Chart No. 1, P16) *LL(102) DFO(6308728-01)*

4841 - Argentina - New Edition - 29-MAY-2015 - NAD 1983

18-OCT-2019 LNM/D. 08-FEB-2019

Delete green port hand lighted spar buoy FI G, marked A11 47°17'33.4"N 053°58'50.9"W
(See Chart No. 1, Qg)
This notice affects Electronic Navigational Chart: CA576298 *(N2019061) LL(28.1) DFO(6308779-01)*

Add green port hand lighted spar buoy FI G, marked A13 47°17'26.4"N 053°59'05.2"W
(See Chart No. 1, Qg)
This notice affects Electronic Navigational Chart: CA576298 *(N2019061) LL(28.1) DFO(6308779-02)*

Delete red starboard hand lighted pillar buoy FI R, marked A6 47°19'34.3"N 053°58'10.2"W
(See Chart No. 1, Qf)
This notice affects Electronic Navigational Chart: CA376296, CA576298 *(N2019072) LL(26) DFO(6308787-01)*

Add red starboard hand lighted pillar buoy FI R, marked A6 47°19'51.5"N 053°58'11.2"W
(See Chart No. 1, Qf)
This notice affects Electronic Navigational Chart: CA376296, CA576298 *(N2019072) LL(26) DFO(6308787-02)*

4841 - Cape St Mary's to / à Argentina - New Edition - 29-MAY-2015 - NAD 1983

18-OCT-2019 LNM/D. 08-FEB-2019

Delete red starboard hand lighted pillar buoy FI R, marked A6 47°19'34.3"N 053°58'10.2"W
(See Chart No. 1, Qf)
This notice affects Electronic Navigational Chart: CA376296, CA576298 *(N2019072) LL(26) DFO(6308787-01)*

Add red starboard hand lighted pillar buoy FI R, marked A6 47°19'51.5"N 053°58'11.2"W
(See Chart No. 1, Qf)
This notice affects Electronic Navigational Chart: CA376296, CA576298 *(N2019072) LL(26) DFO(6308787-02)*

MONTHLY NOTICES TO MARINERS
EASTERN EDITION 10/2019
SECTION 2 – CHART CORRECTIONS

4861 - Fogo Harbour - New Chart - 26-APR-2019 - NAD 1983

18-OCT-2019

Delete depth of 14.1 metres 49°42'07.3"N 054°17'59.3"W
(See Chart No. 1, I10)

DFO(6308810-01)

Add depth of 13.4 metres 49°42'07.5"N 054°17'56.6"W
(See Chart No. 1, I10)

DFO(6308810-02)

4909 - Richibucto Harbour - New Chart - 17-JUN-1988 - NAD 1983

25-OCT-2019

LNM/D. 12-OCT-2018

Delete red starboard hand lighted pillar buoy QR, marked QA6 46°42'05.0"N 064°51'02.4"W
(See Chart No. 1, Qf)

This notice affects Electronic Navigational Chart: CA476131

(G2019097) LL(1148.4) DFO(6308768-01)

Add red starboard hand lighted spar buoy Q R, marked QA6 46°42'04.2"N 064°51'05.5"W
(See Chart No. 1, Qf)

This notice affects Electronic Navigational Chart: CA476131

(G2019097) LL(1148.4) DFO(6308768-02)

7011 - Hudson Strait/Détroit D'Hudson to/à Groenland - New Edition - 02-SEP-1983 - Unknown

11-OCT-2019

LNM/D. 09-AUG-2013

Add underwater rock of unknown depth, dangerous to surface navigation, 62°33'30.0"N 050°26'12.0"W
Rep (2019)

(See Chart No. 1, K13)

DFO(6604570-01)

7776 - Dolphin and Union Strait - New Edition - 30-MAY-1997 - NAD 1983

25-OCT-2019

LNM/D. 09-SEP-2016

Add obstruction with known depth of 3 metres, Rep (2019) 69°08'39.1"N 113°47'52.1"W
(See Chart No. 1, K41)

This notice affects Electronic Navigational Chart: CA373343

DFO(6604572-01)

7784 - Victoria Strait - New Chart - 03-JUL-1998 - NAD 1983

18-OCT-2019

LNM/D. 08-JUN-2018

Add depth of 3.5 metres, Rep (2015). This notice only affects products 69°28'35.3"N 099°22'16.0"W
purchased after June 08, 2018.

(See Chart No. 1, I10)

DFO(6604571-01)

Add depth of 4.3 metres, Rep (2015). This notice only affects products 69°28'58.1"N 099°23'05.3"W
purchased after June 08, 2018.

(See Chart No. 1, I10)

DFO(6604571-02)

MONTHLY NOTICES TO MARINERS
EASTERN EDITION 10/2019
SECTION 2 – CHART CORRECTIONS

8012 - Flemish Pass / Passe Flamande - New Edition - 11-OCT-2002 - NAD 1983

25-OCT-2019

LNM/D. 08-MAR-2019

Add subsurface Ocean Data Acquisition System ODAS/SADO with
unknown depth
(See Chart No. 1, L25)
This notice affects Electronic Navigational Chart: CA176030, CA276101
47°30'46.3"N 047°21'26.5"W
DFO(6308815-02)

Add subsurface Ocean Data Acquisition System ODAS/SADO with
unknown depth
(See Chart No. 1, L25)
This notice affects Electronic Navigational Chart: CA176030, CA276101
47°16'03.4"N 047°07'06.0"W
DFO(6308815-03)

Add subsurface Ocean Data Acquisition System ODAS/SADO with
unknown depth
(See Chart No. 1, L25)
This notice affects Electronic Navigational Chart: CA176030
47°01'23.1"N 046°52'43.4"W
DFO(6308815-04)

Delete lighted offshore platform, Mo(U) 15M, Fog Sig 30s with legend "GSF
Grand Banks"
(See Chart No. 1, P2, L2, R20)
This notice affects Electronic Navigational Chart: CA176030, CA276101
46°44'41.7"N 048°00'40.2"W
DFO(6308816-01)

Delete obstruction, depth unknown
(See Chart No. 1, K40)
This notice affects Electronic Navigational Chart: CA176030, CA276477
48°19'07.9"N 046°17'31.1"W
DFO(6308817-01)

Delete obstruction and legend "ODAS/SADO"
(See Chart No. 1, K40)
This notice affects Electronic Navigational Chart: CA176030
48°19'07.1"N 047°17'35.2"W
DFO(6308817-02)

8013 - Flemish Cap / Bonnet Flamand - New Edition - 06-FEB-2004 - NAD 1983

25-OCT-2019

LNM/D. 28-DEC-2018

Delete obstruction, depth unknown
(See Chart No. 1, K40)
This notice affects Electronic Navigational Chart: CA176030, CA276477
48°19'07.9"N 046°17'31.1"W
DFO(6308817-01)

MONTHLY NOTICES TO MARINERS
EASTERN EDITION 10/2019
SECTION 3 – RADIO AIDS TO MARINE NAVIGATION CORRECTIONS

NO CORRECTIONS FOR THIS SECTION.

SECTION 4 – SAILING DIRECTIONS AND SMALL CRAFT GUIDE CORRECTIONS

ATL 108 — Gulf of St. Lawrence (Southwest Portion), First Edition, 2006 —

Chapter 2 — In the vicinity of paragraph 108

Replace the **POINTE-AUX-LOUPS** diagram with the new one provided in **Section 4** of this Monthly Edition.

<https://www.notmar.gc.ca/publications/monthly-mensuel/images/ed1019-sec4-atl108-diagrammepointeauxlups-20190816.pdf>

(Q2019-050.1)

Chapter 2 — Paragraph 112, after “A breakwater, not attached to the shore,”

Delete: is 125 m NNE of the entrance of the harbour.

Replace by: is 121 m NNE of the entrance of the harbour. Cautionary light **buoy** YGR (*1481.2*) is moored just to the north of the previously-mentioned breakwater. Starboard hand light **buoy** YG2 (*1481.1*) is moored at the entrance of the dredged area leading to the harbour.

(Q2019-067.1)

Chapter 4 — Paragraph 210

Delete: “Floating wharves, ... the south side of the wharf”

Replace by: The wharf is 126 m long

(Q2019-055.1)

Chapter 4 — In the vicinity of paragraph 210

Replace the **PORT-DANIEL-EST** diagram with the new one provided in **Section 4** of this Monthly Edition.

<https://www.notmar.gc.ca/publications/monthly-mensuel/images/ed1019-sec4-atl108-diagrammeportdanielest-20190910.pdf>

(Q2019-055.2)

Chapter 4 — In the vicinity of paragraph 216

Replace the **SAINT-GODEFROI** diagram with the new one provided in **Section 4** of this Monthly Edition.

<https://www.notmar.gc.ca/publications/monthly-mensuel/images/ed1019-sec4-atl108-diagrammesaintgodefroi-20190926.pdf>

(Q2019-059.1)

Chapter 4 — Paragraph 234

Delete: 144 m

Replace by: 275 m

(Q2019-027.1)

Chapter 4 — Delete paragraph 288

Replace by: 288 A depth of 13.6 m lies 1 mile SE of Cap Gaspé. A **shallow area** with a depth of 25.3 m, situated 5 miles SE of Cap Gaspé, forms the NW part of **Banc des Américains**. Banc des Américains extends 10 miles to the SE where there is a depth of 13.3 m. **Tide rips** occur occasionally at these locations.

(Q2019-053.1)

SECTION 4 – SAILING DIRECTIONS AND SMALL CRAFT GUIDE CORRECTIONS

Chapter 4 — After paragraph 288.1

Insert: 288.2 The **Bancs-des-Américains Marine Protected Area (MPA)** extends from Île Bonaventure to near Cap Gaspé and eastward for more than 18 miles. The MPA includes Banc des Américains. Restrictions apply to this MPA and are described in the *Banc-des-Américains MPA Regulations*. For more information, please visit the *Fisheries and Oceans Canada* website at www.dfo-mpo.gc.ca.

(Q2019-053.2)

ATL 110 — St. Lawrence River — Cap Whittle/Cap Gaspé to Les Escoumins and Anticosti Island, Third Edition, 2011 —

Chapter 2 — Delete paragraph 22

Replace by: 22 A depth of 13.6 m lies 1 mile SE of Cap Gaspé. A **shallow area** with a depth of 25.3 m, situated 5 miles SE of Cap Gaspé, forms the NW part of **Banc des Américains**. Banc des Américains extends 10 miles to the SE where there is a depth of 13.3 m. **Tide rips** occur occasionally at these locations.

(Q2019-053.3)

Chapter 2 — After paragraph 22

Insert: 22.1 The **Bancs-des-Américains Marine Protected Area (MPA)** extends from Île Bonaventure to near Cap Gaspé and eastward for more than 18 miles. The MPA includes Banc des Américains. Restrictions apply to this MPA and are described in the *Banc-des-Américains MPA Regulations*. For more information, please visit the *Fisheries and Oceans Canada* website at www.dfo-mpo.gc.ca.

(Q2019-053.4)

ATL 111 — St. Lawrence River — Île Verte to Québec and Fjord du Saguenay, Third Edition, 2007 —

Chapter 2 — Paragraph 71

Delete: “any vessel arriving from below the Port of Québec ... onboard: tankers”

Replace by: any vessel of 65 m or more in length arriving from the downstream limit of the Port of Québec. They will also handle all ship movements in the port. The following types of departing downbound vessels are required to have a harbour pilot onboard: tankers from berths 86 or 87

(Q2019-052.1)

Chapter 2 — In the vicinity of paragraph 97

Replace the **BASSIN LOUISE** diagram with the new one provided in **Section 4** of this Monthly Edition.

<https://www.notmar.gc.ca/publications/monthly-mensuel/images/ed1019-sec4-atl111-diagrammebassinlouise-20190822.pdf>

(Q2019-060.1)

Chapter 2 — In the vicinity of paragraph 127

Delete the **Table 2.3 Port of Québec** and replace by the new **Table 2.3 Port of Québec** published in **Section 4** of this Monthly Edition.

<https://www.notmar.gc.ca/publications/monthly-mensuel/images/ed1019-sec4-atl111-table2.3-07082019APQuébec-en.pdf>

(Q2019-052.2)

SECTION 4 – SAILING DIRECTIONS AND SMALL CRAFT GUIDE CORRECTIONS

Chapter 2 — Paragraph 135

Delete: The companies *Talbot et Hunter* and *Plourde Electro Marine*,

Replace by: *OCEAN Remorquage Québec*,

(Q2019-052.3)

Chapter 2 — Paragraph 137

Delete: “The tug company ... 1,200 HP.”

Replace by: *OCEAN Remorquage Québec* operates a fleet of five to six
4,000 HP to 8,000 HP tugs.

(Q2019-052.4)

ATL 112 — St. Lawrence River — Cap-Rouge to Montréal and Rivière Richelieu, Third Edition, 2009 —

Chapter 2 — In the vicinity of paragraph 252, **Table 2.4 Port of Montreal — Wharves**

Make the following change in the “**Depth †**” column.

Berth	Depth † metres
Racine Terminal 57 S	7.6

(Q2019-056.1)

CEN 308 — Rideau Canal and Ottawa River, First Edition, 2003 —

Chapter 8 — After paragraph 115

Insert: 115.1 Two **submarine cables** (telecommunication),
encased in cast iron pipes, are laid on the bottom of the river
between Grenville and Hawkesbury. The cables extend from
the shore east of the Long-Sault bridge in Grenville in a SW
direction to 0.5 mile east of the *Golden Anchor Marina* in
Hawkesbury.

(Q2019-064.1)

Chapter 8 — Adjacent to paragraph 115.1, add a caution pictograph.

(Q2019-064.2)

MONTHLY NOTICES TO MARINERS
EASTERN EDITION 10/2019

SECTION 5 – LIST OF LIGHTS, BUOYS AND FOG SIGNALS CORRECTIONS

The amendments are highlighted and deletions are crossed out. For general and region-specific information on the List of Lights, click on the following links: [Newfoundland and Labrador Coast](#), [Atlantic Coast](#), [Inland Waters](#) and [Pacific Coast](#).

No.	Name	Position ----- Latitude N. Longitude W.	Light Characteristics	Focal Height in m. above water	Nomi- nal Range	Description ----- Height in meters above ground	Remarks ----- Fog Signals
-----	------	--	--------------------------	--	-----------------------	--	---------------------------------

NEWFOUNDLAND AND LABRADOR COAST

PLACENTIA BAY (LL 14.4 – 79)

26	Argentia light buoy A6	47 19 51.5 053 58 11.2	Fl R 4s	Red, marked "A6".	Year round. Chart:4841 Edn 10/19 (N19-072)
28.1	Argentia Harbour light buoy A13	47 17 26.4 053 59 05.2	Fl G 4s	Green spar, marked "A13".	Year round. Chart:4841 Edn 10/19 (N19-061)
37.51	Chance Rock Fair Haven light buoy PFH5	Fair Haven. 47 31 43.2 053 54 06.6	Fl G 4s	Green spar, marked "PFH5".	Operates 24 h. Year round. Chart:4617 Edn 10/19 (N19-065)
49.41	Isle Valen light buoy PV1	47 28 21.0 054 23 33.6	Fl G 4s	Green spar, marked "PV1".	Seasonal. Chart:4619 Edn 10/19 (N19-070)
49.42	Isle Valen light buoy PV2	47 28 18.9 054 23 28.8	Fl R 4s	Red spar, marked "PV2".	Seasonal. Chart:4619 Edn 10/19 (N19-071)
53.29	Petite Forte Outer light buoy PE5	47 22 57.5 054 38 58.3	Fl G 4s	Green spar, marked "PE5".	Year round. Chart:4615 Edn 10/19 (N19-077)
76 H0350	Lamaline (Allan's Island) Light Station and Fog Signal	Lamaline. 46 50 48.0 055 47 51.5	Fl W 4s	19.5	16	White square-skeleton tower with red top. 11.3	Flash 1 s; eclipse 3 s. Year round. Horn – Blast 3 s; sil. 27 s. Horn points S. Chart:4642 Edn 10/19

FORTUNE BAY (LL 100 – 120.1)

100 H0348	Green Island Light Station and Fog Signal	Point Creve. 46 52 47.0 056 05 08.5	iso W 10s	45.4	15	Square skeleton tower, red and white rectangular daymark. 6.7	Flash every 40 s. Operates 24 h. Year round. Horn - Blast 4 s; sil. 56 s. Horn points 089°. Chart:4625 Edn 10/19
--------------	---	---	-----------	------	----	--	--

MONTHLY NOTICES TO MARINERS
EASTERN EDITION 10/2019

SECTION 5 – LIST OF LIGHTS, BUOYS AND FOG SIGNALS CORRECTIONS

No.	Name	Position ----- Latitude N. Longitude W.	Light Characteristics	Focal Height in m. above water	Nomi- nal Range	Description ----- Height in meters above ground	Remarks ----- Fog Signals
102 H0325	Fortune Head Light Station and Fog Signal	Near Fortune Head. 47 04 28.0 055 51 34.0	Fl W 5s	23.8	15	White skeleton tower with red top. 9.9	Flash 0.1 s; eclipse 4.9 s. Operates 24 h. Year round. Horn – Blast 3 s; sil. 27s. Horn points 326°18'. Chart:4832 Edn 10/19
SOUTHWEST COAST (LL 121 – 172)							
156 H0238	Colombier Islands Light Station and Fog Signal	On island, entrance to Burnt Island. 47 35 30.9 058 53 50.3	Fl W 5s	18.3	15	Square skeleton tower. 11.3	Flash 0.5 s; eclipse 4.5 s. Operates 24 h. Year round. Horn – Blast 3 s; sil. 27 s. Horn points 186°. Chart:4823 Edn 10/19 (N19-080)
172	Pancake Rock light buoy QP9	Port aux Basques. 47 34 34.8 059 08 22.0	Fl G 4s	Green spar, marked "QP9".	Year round. Chart:4641 Edn 10/19 (N19-047)
WEST COAST (LL 173 – 208.2)							
199 H0175	Trout River Light	49 28 58.7 058 07 58.4	Fl W 6s	24.3	6	Square skeleton tower, white rectangular daymark with red band at top and bottom. 4.3	Flash 1 s; eclipse 5 s. Year round. Chart:4881 Edn 10/19 (N19-052)
STRAIT OF BELLE ISLE (LL 211 – 234)							
219 233.15 H0138	Schooner Island Light	Approaches to Cooks Harbour, N. end of island. 51 36 21.8 055 50 21.8	Fl W 6s	10.4	5	Square skeleton tower, red and white rectangular daymark. 4.9	Flash 1 s; eclipse 5 s. Seasonal. Chart:4509 Edn 10/19 (N18-079)
NOTRE DAME BAY (LL 326 – 346.4, 354 – 395)							
389 H0597	Green Island Light (Rocky Bay)	Rocky Bay. 49 26 55.9 054 13 41.6	Fl W 6s	9.8	5	Rectangular skeleton tower, red rectangular daymark with white horizontal band.	Flash 0.5 s; eclipse 5.5 s. Visible 180°. Year round. Chart:4530 Edn 10/19 (N19-049)
BAY OF EXPLOITS (LL 347 – 353.9)							
350 H0664	Grassy Island Light	Centre of island. 49 15 36.0 055 14 10.0	Fl R 4s	11.7	4	Square skeleton tower, red and white square daymark. 4.7	Year round. Chart:4866 Edn 10/19 (N19-087)
350.1 H0664.5	Point of Bay Wharf Light	49 15 37.9 055 14 36.9	Fl R 4s	2	Mast. 2.6	Seasonal. Chart:4866 Edn 10/19 (N19-084)

MONTHLY NOTICES TO MARINERS
EASTERN EDITION 10/2019

SECTION 5 – LIST OF LIGHTS, BUOYS AND FOG SIGNALS CORRECTIONS

No.	Name	Position ----- Latitude N. Longitude W.	Light Characteristics	Focal Height in m. above water	Nomi- nal Range	Description ----- Height in meters above ground	Remarks ----- Fog Signals
350.12	Point of Bay Shoal light buoy DPB3	49 15 43.3 055 14 25.9	Fl G 4s	Green spar, marked "DPB3".	Seasonal. Chart:4866 Edn 10/19 (N19-083)
350.6 H0665.5	Phillips Head Wharf Light	49 13 30.0 055 18 23.0	Fl R 4s	4	Cylindrical Mast. 2.4	Seasonal. Chart:4866 Edn 10/19 (N19-085)

ATLANTIC COAST

NOVA SCOTIA, SOUTHEAST COAST (LL 327 – 684.02)

349 H3774	Long Rock Light and Fog Signal	On SE. end of island. 43 30 26.2 065 20 44.2	LFl W 6s	28.3	11	White octagonal tower with red at top. 12.0	Flash 2 s; eclipse 4 s. Visible from 187° through W., N. and E. to 106°30'. Year round. Horn – Blast 6 s; sil. 54 s. Omnidirectional. Chart:4241 Edn 10/19 (F19-031)
580.3	Pyches Rock East Cardinal light and bell buoy YS	44 39 50.3 062 50 30.6	Q(3) W 10s	Black-yellow-black, marked "YS".	Year round. Chart:4236 Edn 10/19 (F19-036)
586.01	Black Rock light buoy YM8	44 46 18.5 062 47 55.0	Fl R 4s	Red spar, marked "YM8".	Seasonal. Chart:4236 Edn 10/19 (F19-032)
586.03	Ship Harbour light buoy YM12	44 46 57.0 062 49 09.3	Fl R 4s	Red spar, marked "YM12".	Seasonal. Chart:4236 Edn 10/19 (F19-033)
586.04	Ship Harbour light buoy YM14	44 47 57.2 062 50 10.0	Fl R 4s	Red spar, marked "YM14".	Seasonal. Chart:4236 Edn 10/19 (F19-035)
586.07	Ship Harbour light buoy YM17	44 48 08.0 062 50 30.1	Q G 1s	Green spar, marked "YM17".	Seasonal. Chart:4236 Edn 10/19 (F19-034)

CAPE BRETON ISLAND, N.S. (LL 704.85 – 882.5)

785.84 H0768	Crawleys Creek range	46 09 00.9 060 13 21.0	Iso G 4s	4.1	3	Pyramid tower, white daymark with black vertical stripe. 3.5	Privately maintained. Operates 24 h. Year round.
785.85 H0768.1		235°21' 174.5 m from front.	Iso G 4s	9.3	3	Pyramid tower, white daymark with black vertical stripe. 3.5	Privately maintained. Operates 24 h. Year round. Chart:4266 Edn 10/19 (G19-108, 109, 112, 113)

MONTHLY NOTICES TO MARINERS
EASTERN EDITION 10/2019

SECTION 5 – LIST OF LIGHTS, BUOYS AND FOG SIGNALS CORRECTIONS

No.	Name	Position ----- Latitude N. Longitude W.	Light Characteristics	Focal Height in m. above water	Nomi- nal Range	Description ----- Height in meters above ground	Remarks ----- Fog Signals
PRINCE EDWARD ISLAND (LL 942 – 1084.7)							
948.5	Annandale light buoy NE	In Boughton Bay. 46 14 31.2 062 23 00.8	Mo(A) W 6s	Red and white vertical stripes, marked "NE".	Seasonal. Chart: 4935 Edn 10/19 (G19-076)
948.6	Annandale Grand River East light buoy NE2	46 14 55.8 062 23 54.1	Fl R 4s	Red, marked "NE2".	Seasonal. Chart: 4935 Edn 10/19 (G19-076)
950.1	Annandale Grand River East light buoy NE5	Boughton Bay. 46 15 09.7 062 24 30.8	Fl G 4s	Green, marked "NE5".	Seasonal. Chart: 4935 Edn 10/19 (G19-076)
950.12	Annandale Grand River East light buoy NE7	46 15 17.0 062 24 50.9	Q G 1s	Green, marked "NE7".	Seasonal. Chart: 4935 Edn 10/19 (G19-076)
950.15	Annandale Grand River East light buoy NE9	Grand River East. 46 15 24.3 062 25 19.9	Fl G 4s	Green spar, marked "NE9".	Operates 24 h. Seasonal. Chart: 4935 Edn 10/19 (G19-076)
950.2	Annandale Grand River East light buoy NE10	SE. of Annandale wharf. 46 15 25.2 062 25 15.9	Fl R 4s	Red spar, marked "NE10".	Seasonal. Chart: 4935 Edn 10/19 (G19-076)
951.5	Launching Point light buoy NY2	46 13 06.2 062 24 05.8	Fl R 4s	Red spar, marked "NY2".	Seasonal. Chart: 4935 Edn 10/19 (G19-076)
951.6	Cardigan River light buoy NJ2	Cardigan Bay. 46 12 03.2 062 29 51.2	Fl R 4s	Red, marked "NJ2".	Seasonal. Chart: 4935 Edn 10/19 (G19-076)
951.7	Upper Cardigan (MacPhee Shoal) light buoy NJ3	Cardigan Bay. 46 12 02.7 062 30 20.7	Fl G 4s	Green spar, marked "NJ3".	Seasonal. Chart: 4935 Edn 10/19 (G19-076)
951.75	Cardigan River (Morrison's Beach) light buoy NJ7	Morrison Beach. 46 12 52.5 062 32 07.1	Fl G 4s	Green, marked "NJ7".	Seasonal. Chart: 4935 Edn 10/19 (G19-076)
951.8	Cardigan River light buoy NJ14	Green's Point. 46 13 24.2 062 33 48.7	Fl R 4s	Red, marked "NJ14".	Seasonal. Chart: 4935 Edn 10/19 (G19-076)
NORTHUMBERLAND STRAIT (LL 1085 – 1165.9)							
1148	Richibucto Harbour light buoy QA2	N. of Pagan Point. 46 41 51.8 064 50 15.5	Q R 1s	Red spar, marked "QA2".	Buoy may be repositioned due to shifting channel. Seasonal. Chart: 4909 Edn 10/19 (G19-098)

MONTHLY NOTICES TO MARINERS
EASTERN EDITION 10/2019

SECTION 5 – LIST OF LIGHTS, BUOYS AND FOG SIGNALS CORRECTIONS

No.	Name	Position ----- Latitude N. Longitude W.	Light Characteristics	Focal Height in m. above water	Nomi- nal Range	Description ----- Height in meters above ground	Remarks ----- Fog Signals
1148.4	Richibucto Harbour Northwest Branch light buoy QA6	N. of McGuires Point. 46 42 04.2 064 51 05.5	Q R 1s	Red spar, marked "QA6".	Buoy may be repositioned due to shifting channel. Seasonal. Chart:4909 Edn 10/19 (G19-097)
1154	Kouchibouguacis River light buoy XX4	46 46 04.4 064 50 56.7	Fl R 4s	Red, marked "XX4".	Buoy may be repositioned due to shifting channel. Seasonal. Chart:N/A Edn 10/19 (G19-099, 111)
1154.1	Kouchibouguacis River light buoy XX13	46 46 02.5 064 51 13.2	Fl G 4s	Green, marked "XX13".	Buoy may be repositioned due to shifting channel. Seasonal. Chart:N/A Edn 10/19 (G19-100, 111)

INLAND WATERS

LAKE ONTARIO (LL 403.4 – 551)

535	Burlington Canal South Pier Outer	On E. end of S. pier. 43 18 03.6 079 47 25.8	Iso G 4s	14.5	10	White square tower with green top. 13.1	Seasonal. Chart:2067 Edn 10/19 (B19-004)
-----	--------------------------------------	--	----------	------	----	---	--

LAKE SUPERIOR (LL 1082 – 1161)

1117	Battle Island	On W. end of island. 48 45 06.4 087 33 26.0	Fl W 10s	36.0	10	White octagonal tower with red top. 13.1	Flash 1 s; eclipse 9 s. Seasonal. Chart:2312 Edn 10/19 (D18-012)
------	---------------	---	----------	------	----	--	---

CANADIAN COAST GUARD – MARINE INFORMATION REPORT AND SUGGESTION SHEET

Name of Ship or Sender: Date:

Address of Sender:
Street # Street Name

Town / City: Prov / State: Postal Code / Zip Code:

Tel / Fax / E-mail address of sender:

Observation Date: Time (UTC):

Geographical Position:

Coordinate Position: Lat: Long:

Position Method: DGPS GPS with WAAS GPS Radar Other

Horizontal Datum Used: WGS 84 NAD 27 Other

Estimated Position Accuracy:

Chart #: Datum: NAD 27 NAD 83

Chart Edition: Last Correction applied:

Publications affected (Quote edition and page number):

*Full details (Attach additional sheets as necessary):

Mariners are requested to notify the responsible authorities when new or suspected dangers to navigation are discovered, changes are observed in aids to navigation, or corrections to publications are seen to be necessary.

In the case of new or suspected dangers to navigation, it is important that all details be given in order to aid with future investigations. Items of interest include heights, depths, physical description, type of bottom and equipment method used to position the item. It is helpful to mark details on the chart, which will be promptly replaced by the Canadian Hydrographic Service.

Reports should be made to the nearest Marine Communications and Traffic Services Centre (MCTS) and should be confirmed in writing to:

Leader, Notices to Mariners
Canadian Coast Guard
Department of Fisheries and Oceans
Montreal, QC H2Y 2E7
Notmar.XNCR@dfo-mpo.gc.ca

In the case of information concerning aids to navigation or the List of Lights, Buoys and Fog Signals book.

OR

Director General, Canadian Hydrographic Service &
Oceanographic Services
Department of Fisheries and Oceans
Ottawa, ON K1A 0E6
CHSINFO@dfo-mpo.gc.ca

In the case of new or suspected dangers to navigation or where corrections to "Sailing Directions" appear to be necessary.

For general questions on Canadian Coast Guard programs or services, please send an e-mail to:
info@dfo-mpo.gc.ca