



Fisheries and Oceans
Canada

Pêches et Océans
Canada

Canadian
Coast Guard

Garde côtière
canadienne

NOTICES TO MARINERS PUBLICATION EASTERN EDITION

MONTHLY EDITION N°07
July 31, 2020



Safety First, Service Always

Published Monthly by the
CANADIAN COAST GUARD
www.notmar.gc.ca/subscribe

CONTENTS

	Page
Section 1	General and Safety Information..... 1 - 11
Section 2	Chart Corrections..... 12 - 29
Section 3	Radio Aids to Marine Navigation Corrections 30 - 40
Section 4	Sailing Directions and Small Craft Guide Corrections..... 41 - 47
Section 5	List of Lights, Buoys and Fog Signals Corrections..... 48 - 53

Notices to Mariners Publication
Eastern Edition
Monthly Edition N°07/2020

Published under the authority of:
Canadian Coast Guard Programs
Aids to Navigation and Waterways
Fisheries and Oceans Canada
Montreal, Quebec
H2Y 2E7

© Her Majesty the Queen in Right of Canada, 2020
Fs152-5E-PDF
ISSN 1719-7678

Available on the Notices to Mariners website:
www.notmar.gc.ca

Disponible en français :
Publication des Avis aux navigateurs
Édition de l'Est
Édition mensuelle N°07/2020

EXPLANATORY NOTES

Geographical positions refer directly to the graduations of the largest scale Canadian Hydrographic Service chart unless otherwise indicated.

Bearings refer to the true compass and are measured clockwise from 000° (North) clockwise to 359°; those relating to lights are from seaward.

Visibility of lights is that in clear weather.

Depths - The units used for soundings (metres, fathoms or feet) are stated in the title of each chart.

Elevations are normally given above Higher High Water, Large Tide unless otherwise indicated.

Distances may be calculated as follows:

1 nautical mile = 1,852 metres (6,076.1 feet)

1 statute mile = 1,609.3 metres (5,280 feet)

1 metre = 3.28 feet

Temporary and Preliminary Notices to Mariners are indicated by a (T) or a (P) in Section 1, respectively. Please note that nautical charts are not amended by the Canadian Hydrographic Service for temporary (T) and preliminary (P) notices. It is recommended that mariners chart these corrections in pencil. For the list of charts affected by (T) & (P) notices, please refer to the index on page ii of the current [Monthly Summary of \(T\) and \(P\) Notices](#) publication.

Please note that, in addition to the temporary and preliminary changes normally advertised as (T) & (P) notices, there are a few permanent changes to aids to navigation that have been advertised as preliminary Notices to Mariners while charts are being updated for new editions.

Marine Information Report & Suggestion Sheet

Mariners are requested to notify the responsible authorities when new or suspected dangers to navigation are discovered, changes observed in aids to navigation or corrections to publications are seen to be necessary. Such communications can be made using the *Marine Information Report & Suggestion Sheet* inserted on the last page of each monthly edition of *Notices to Mariners*.

Canadian Hydrographic Service (CHS) – Information Published in Section 2 of Notices to Mariners

Mariners are advised that only the most critical changes that directly affect safety to navigation are issued in Section 2 – Chart Corrections. This limitation is required to ensure that charts remain as clear and easy to read as possible. As a result, mariners may see minor discrepancies of a non-critical nature between information in official publications. For example, a small change in the nominal range or focal height of a light may not result in the production of a chart correction in *Notices to Mariners*, but may result in a correction in the *List of Lights, Buoys and Fog Signals* publication.

In the case of a discrepancy between information provided on CHS charts relating to aids to navigation, and the *List of Lights, Buoys and Fog Signals* publication, the latter shall be deemed as containing the most up-to-date information.

Canadian Nautical Charts & Publications

A source list of Canadian nautical charts and publications is published in Notice No. 14 of the *Notices to Mariners Annual Edition 2020*. The source supply and the prices effective at the time of printing are listed. For current chart edition dates, please refer to the following website: www.chs-shc.gc.ca/charts-cartes/paper-papier/index-eng.asp

CHART CORRECTIONS – SECTION 2

Corrections to nautical charts will be listed in numerical order by chart number. Each chart correction listed applies only to that particular chart. Related charts, if any, will have their own specific correction listed separately.

Users should also refer to CHS *Chart 1: Symbols, Abbreviations and Terms* for additional information pertaining to the correction of charts.

The illustration below describes the elements that will comprise a typical Section 2 chart correction:

	Chart Number	Chart Title	Charts latest new edition date	Horizontal Chart Datum	Last Correction
Weekly chart correction date	1202	Cap Eternité à/to Saint-Fulgence – New Edition – 20-MAY-94 – NAD 1927			
	6-Aug-1999				LNMD 23-Jul-1999
	Add	light FI G		48°26'36.4"N 70°53'08.6"W	
		(See Chart No 1 P24)		(F2007-107) LL (700) DFO(6829264-01)	
	Chart action	Chart No 1 reference no.	CCG reference no.	List of light no.	CHS reference no.

The last correction number is identified with the **LNMD** or Last Notice to Mariners Number / Date.

NOTICES TO MARINERS WEBSITE – MONTHLY EDITIONS, CHART CORRECTIONS, AND CHART PATCHES

The Notices to Mariners website allows users to access the [monthly publications](#), [chart corrections](#), and [chart patches](#).

Users can subscribe for free to the [email notification service](#) to receive notifications when charts of interest are updated, including their patches, as well as when a new monthly edition becomes available online.

In addition, the monthly publication and related files to download, such as chart patches and *Sailing Directions* diagrams, can be obtained all together through the download of a single ZIP file.

ADVISORY NAVIGATIONAL WARNINGS / NOTICES TO SHIPPING

The Canadian Coast Guard is implementing a number of changes to the aids to navigation system in Canada.

These changes are advertised as Navigational Warnings, formerly called Notices to Shipping¹, that are broadcast by the Canadian Coast Guard, and are then followed up with Notices to Mariners, then charts are updated by hand correction, reprints or new editions.

Mariners are advised that all relevant Navigational Warnings (NAVWARNs) should be kept until superseded by Notices to Mariners or through revised charts issued by the Canadian Hydrographic Service (CHS).

Navigational Warnings are accessible on the applicable regional page on the Canadian Coast Guard e-Navigation Maritime Information Portal at <http://www.marinfo.gc.ca/e-nav>.

The Canadian Hydrographic Service is reviewing the impact of these changes with the Canadian Coast Guard and together are preparing an action plan on the issuing of chart revisions.

For further information, contact your regional Navigational Warning (NAVWARN) Issuing Desk.

Atlantic Region

* Port aux Basques MCTS Centre

Canadian Coast Guard
49 Stadium Rd.
P.O. Box 99
Port aux Basques, NL A0M 1C0

Telephone: (709) 695-2168 or 1-800-563-9089
Facsimile: (709) 695-7784

Email: NAVWARN.MCTSPortAuxBasques@innav.gc.ca
Website: <http://www.marinfo.gc.ca/e-nav>

* Sydney MCTS Centre

Canadian Coast Guard
1190 Westmount Road
Sydney, NS B1R 2J6

Telephone: (902) 564-7751 or 1-800-686-8676
Facsimile: (902) 564-7662

Email: NAVWARN.MCTSSydney@innav.gc.ca
Website: <http://www.marinfo.gc.ca/e-nav>

Central Region

* Prescott MCTS Centre

Canadian Coast Guard
401 King Street West
P.O. Box 1000
Prescott, ON K0E 1T0

"C" and "Q" Series
Telephone: (613) 925-0666
Facsimile: (613) 925-4519

Email: NAVWARN.MCTSPrescott@innav.gc.ca
Website: <http://www.marinfo.gc.ca/e-nav>

Arctic Region

* Iqaluit MCTS Centre

Operational from approximately mid-May until late December.

Canadian Coast Guard
P.O. Box 189
Iqaluit, NU X0A 0H0

"A" Series
Telephone: (867) 979-5269

"H" Series
Telephone: (867) 979-0310

Facsimile: (867) 979-4264
Email: NAVWARN.MCTSIqaluit@innav.gc.ca
Website: <http://www.marinfo.gc.ca/e-nav>

* Service available in English and French.

¹ The expression "Notice to Shipping" was changed to "Navigational Warning" in January 2019.

INDEX

SECTION 1 – GENERAL AND SAFETY INFORMATION	1
Transport Canada – Restricted Speed Area - St. Clair and Detroit Rivers	1
Canadian Coast Guard Publication – Comments and Suggestions on Notices to Mariners (Notmar) Publications	1
Canadian Hydrographic Service – Modifications to the 2020 Canadian Tide and Current Tables Volume 1 – Atlantic Coast and Bay of Fundy	1
Saguenay-St. Lawrence Marine Park and Surrounding Waters – Whale Protection	1
Transport Canada – COVID-19 Measures, Updates and Guidance	2
Canadian Hydrographic Service – Modifications to the 2020 Canadian Tide and Current Tables, Volume 2 – Gulf of St. Lawrence	2
Saguenay–St. Lawrence Marine Park - Beluga Whale Protection: Slowdown Area at the Mouth of the Saguenay Fjord and Area Closure at Baie Sainte-Marguerite.....	3
*701 Canadian Hydrographic Service – Nautical Charts	5
*702 Canadian Hydrographic Service – Electronic Navigational Charts	5
*703 Canadian Hydrographic Service – Raster Digital Charts (BSB V3)	5
*704 Transport Canada – Ship Safety Bulletins #12 and #18/2020	5
*705 Canadian Coast Guard Publication - Amendments to the Notices to Mariners Annual Edition 2020 - Section A2, Notice 5: General Guidelines for Aquatic Species at Risk and Important Marine Mammal Areas General Regulatory Requirements for all Oceans Act Marine Protected Areas	6
*706 Gulf of St. Lawrence – Protection of the North Atlantic Right Whale	6
*708 Rustico Bay and / et New London Bay – Unlit Buoy Aid Designator Changed.....	11
*710(T) Murray Canal to Healey Falls Locks / Murray Canal aux Écluses de Healey Falls – Construction Operations ..	11
SECTION 2 – CHART CORRECTIONS	12
SECTION 3 – RADIO AIDS TO MARINE NAVIGATION CORRECTIONS	30
*711 Radio Aids to Marine Navigation 2020 (Atlantic, St. Lawrence, Great Lakes, Lake Winnipeg, Arctic and Pacific).....	30
SECTION 4 – SAILING DIRECTIONS AND SMALL CRAFT GUIDE CORRECTIONS	41
SECTION 5 – LIST OF LIGHTS, BUOYS AND FOG SIGNALS CORRECTIONS	48

NUMERICAL INDEX OF CANADIAN CHARTS AFFECTED

This numerical index lists all nautical charts mentioned in this monthly edition of Notices to Mariners. Only charts appearing in Section 2 of this publication require a chart correction. The appearance of charts in all other sections, particularly those related to the correction of other nautical publications, is included here for reference.

Chart No.	Page	Chart No.	Page	Chart No.	Page	Chart No.	Page
1314	51	4467	11	5143	5		
1430	51 , 52 , 53	4468	51	5164	5		
1431	12 , 53	4491	20 , 51	5165	5		
1433	12 , 53	4530	49	5348	27 , 28		
1514	12 , 13	4592	21 , 49	5349	28		
2021	11	4593	49	8007	28		
2201	5	4624	21	8047	29		
2241	13 , 53	4625	21 , 22	14822	42 , 43 , 44		
4012	13	4626	22 , 23	14830	44 , 45		
4013	14	4643	24	14832	42 , 43		
4015	14	4654	48	14833	42 , 43		
4016	14 , 15	4680	24	14842	44		
4020	48	4728	5	14844	44		
4021	15 , 16	4730	24	14846	44 , 45		
4023	50	4820	24	14847	45		
4047	16	4821	24	14882	45		
4116	17	4827	25 , 26	14883	45 , 46		
4117	17	4831	26 , 48	14884	45 , 46		
4227	17	4862	26 , 49	14887	45		
4235	17 , 50	4864	49	14962	46		
4236	17 , 18	4885	26 , 48	14968	47		
4320	18 , 19	4913	26 , 27 , 50	14976	47		
4384	19	4920	50				
4395	19	4921	27				
4404	19	5024	27				
4406	19 , 20	5030	48				
4445	20	5046	48				
4459	5	5048	27 , 48				

TRANSPORT CANADA – RESTRICTED SPEED AREA - ST. CLAIR AND DETROIT RIVERS

(Recurrent publication of notice *1103/12, originally published in the *Notices to Mariners Publication - Eastern Edition 11/2012.*)

Since November 14, 2012, the restricted speed area currently in place as per the St. Clair and Detroit River Navigation Safety Regulations between the Detroit River light and Peche Island light is reduced in size by relocating the southern point of the restricted speed area from its current location at the Detroit River light to a new location at Bar Point light D33.

CANADIAN COAST GUARD PUBLICATION – COMMENTS AND SUGGESTIONS ON NOTICES TO MARINERS (NOTMAR) PUBLICATIONS

In an effort to continuously improve the Notices to Mariners publications and to provide the most efficient service possible, the Notices to Mariners team invites all mariners and other interested parties to submit comments and suggestions on possible improvements to its various publications and services at the following email address: Notmar.XNCR@dfo-mpo.gc.ca

CANADIAN HYDROGRAPHIC SERVICE – MODIFICATIONS TO THE 2020 CANADIAN TIDE AND CURRENT TABLES VOLUME 1 – ATLANTIC COAST AND BAY OF FUNDY

(Recurrent publication of notice *203/20, originally published in the *Notices to Mariners Publication - Eastern Edition 02/2020.*)

The Canadian Hydrographic Service of the Atlantic Region has identified an error in the 2020 Canadian Tide and Current Tables Volume 1 - Atlantic Coast and Bay of Fundy, Tide tables for Holyrood, Newfoundland (station #925)

Mariners must refer to the following link for updated information on Holyrood's Tide Tables:

http://tides.gc.ca/eng/data/table/2020/wlev_sec/925

SAGUENAY-ST. LAWRENCE MARINE PARK AND SURROUNDING WATERS – WHALE PROTECTION

(Recurrent publication of notice *404/20, originally published in the *Notices to Mariners Publication - Eastern Edition 04/2020.*)

The waters in and around the Saguenay–St. Lawrence Marine Park are well known for the resident endangered beluga population and the wide diversity of whales that migrate there to feed, particularly between April and November.

REGULATORY PROTECTION MEASURES

All whale species that are found in the St. Lawrence are protected under the *Marine Mammal Regulations*, pursuant to the *Fisheries Act*. Within the boundaries of the Marine Park, specific measures are set out in the *Marine Activities in the Saguenay–St. Lawrence Marine Park Regulations*, pursuant to the establishment of the *Saguenay–St. Lawrence Marine Park Act*. Any collision with a marine mammal within the Marine Park must immediately be reported to a park warden at 1-866-508-9888. For collisions that occur outside the Marine Park or for any situation involving a marine mammal that is dead or in trouble, contact the emergency network at 1-877-722-5346 or on VHF channel 16.

For more information on the Saguenay–St. Lawrence Marine Park, see notice 5C of the *Notices to Mariners Annual Edition 2020*.

VOLUNTARY PROTECTION MEASURES

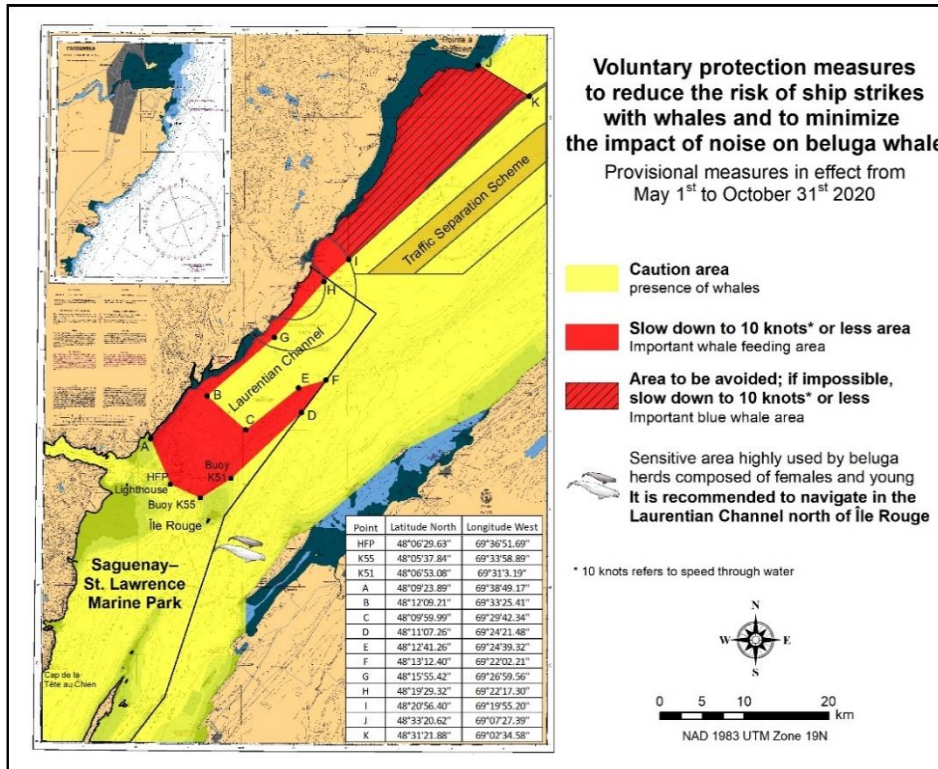
Provisional measures in effect from May 1 to October 31, 2020. See map at the end of this notice.

These measures apply to merchant vessels and cruise ships between Pointe à Boisvert and Cap de la Tête au Chien to prevent collisions with whales. These measures should only be taken when they will not jeopardize navigational safety.

Caution area (yellow area): To reduce the risk of collisions with whales that can be present anywhere in this area, heightened vigilance of navigators is critical. Posting a lookout is recommended in order to increase the chances of seeing the whales and thus taking necessary measures to avoid them. If bypassing the whales is not possible, slow down and wait for the animals to move away to a distance greater than 400 metres (0.215 nautical miles) before resuming original speed. It is more difficult to see the animals at night therefore increased caution is recommended.

Slow down to 10 knots or less area (red area): To reduce the risk of collisions with whales in this feeding area, it is recommended that vessels slow down to a maximum speed through the water of 10 knots and post a lookout. It is further recommended to remain in the Laurentian Channel to the north of Île Rouge to minimize the impact of noise in a sensitive area south of this island, which is highly frequented by herds of beluga whales composed of females and young.

Area to be avoided (hatched red area): To reduce noise and the risk of collisions with whales, vessels should avoid transiting through this area which is highly frequented by blue whales, an endangered species. If the area cannot be avoided, slow down to a speed through the water of 10 knots or less.



TRANSPORT CANADA – COVID-19 MEASURES, UPDATES AND GUIDANCE

(Recurrent publication of notice *401/20, originally published in the *Notices to Mariners Publication - Eastern Edition 04/2020*.)

Please refer to the link below for the latest updates to transportation related measures taken by Transport Canada in response to the evolving novel Coronavirus disease (COVID-19):

<https://www.tc.gc.ca/en/initiatives/covid-19-measures-updates-guidance-tc.html>

For travel advice and all other updates, please visit: Canada.ca/coronavirus

CANADIAN HYDROGRAPHIC SERVICE – MODIFICATIONS TO THE 2020 CANADIAN TIDE AND CURRENT TABLES, VOLUME 2 – GULF OF ST. LAWRENCE

(Recurrent publication of notice *506/20, originally published in the *Notices to Mariners Publication - Eastern Edition 05/2020*.)

The Canadian Hydrographic Service of the Quebec Region has identified a correction in the 2020 Canadian Tide and Current Tables, Volume 2, Gulf of St. Lawrence, on page 79.

Mariners should replace a section of Table 3 with the corresponding section annexed below:

<https://www.notmar.gc.ca/publications/monthly-mensuel/images/ed052020-part1-vol2-p79.pdf>

SAGUENAY–ST. LAWRENCE MARINE PARK - BELUGA WHALE PROTECTION: SLOWDOWN AREA AT THE MOUTH OF THE SAGUENAY FJORD AND AREA CLOSURE AT BAIE SAINTE-MARGUERITE

(Recurrent publication of notice *605/20, originally published in the *Notices to Mariners Publication - Eastern Edition 06/2020*.)

The Saguenay–St. Lawrence Marine Park and its surrounding area are at the heart of endangered beluga whale critical summer habitat. Marine mammal protection measures have been put in place in accordance with the *Marine Activities in the Saguenay–St. Lawrence Marine Park Regulations* within the limits of the Marine Park.

However, important feeding, calving and rearing areas for beluga whales require greater protection to ensure the recovery of the species. The portion of the Saguenay situated between the mouth of the Fjord and Baie Sainte-Marguerite is one of the areas most used by females and their young from May to October. The mouth of the Saguenay is known as a feeding ground and Baie Sainte-Marguerite as a calving and rearing area.

In order to prevent collisions with beluga whales, a compulsory 15-knot slowdown area is in effect from May 1st to October 31st at the mouth of the Saguenay. To ensure tranquility for female belugas and their young during the critical calving period, access to Baie Sainte-Marguerite is prohibited to all vessels from June 21st to September 21st, except for special authorizations (see description below).

For safety reasons, *the slowdown area measure at the mouth of the Saguenay Fjord does not apply* to cargo ships (see the monthly edition of *Notice to Mariners* from May to October for voluntary protection measures in the St. Lawrence Estuary). An enhanced vigilance is, however, recommended to all navigators between the mouth of the Saguenay Fjord and Baie Sainte-Marguerite for the protection of beluga whales.

For more information on the Saguenay–St. Lawrence Marine Park, see notice 5C of the *Notices to Mariners Annual Edition 2020* or visit <http://parcmarin.qc.ca/home/>.

REGULATORY PROTECTION MEASURES — BELUGA WHALE

Entire Marine Park Territory:

- When beluga whales are less than half a nautical mile (926 metres) from a motorized vessel, the vessel must maintain a speed of between 5 and 10 knots.
- All vessels, including human-powered vessels (kayaks and canoes), must continue to move forward and maintain their heading.
- All vessels must maintain a minimum distance of 400 metres from beluga whales at all times.

For more information concerning the regulations, consult: <http://marinepark.ca/protect/#regulations>.

Mouth of the Saguenay Fjord (Figure 1) — Slowdown Area (area cross-hatched in red):

- Maximum speed at the mouth of the Saguenay between buoys S7 and S8 and the ferry docks between Baie-Sainte-Catherine and Tadoussac is 15 knots from May 1st to October 31st.

Baie Sainte-Marguerite (Figure 2) — Area Closure (red area):

- From June 21st to September 21st, vessels must not enter the red area, which follows a line between Cap Nord-Ouest and Cap Sainte-Marguerite.
- Special authorizations are granted only for kayaks, canoes and recreational fishermen who must travel without stopping along a corridor within 10 metres of the shore or in shallow areas.

VOLUNTARY PROTECTION MEASURES

Baie Sainte-Marguerite sector (Figure 2) — Transit Area (area cross-hatched in yellow):

- From June 21st to September 21st, navigation in this area is recommended at a speed of between 5 and 10 knots without stopping.

The purpose of this transit area is to favour respect of the *Marine Activities in the Saguenay–St. Lawrence Marine Park Regulations*, since beluga whales are often present in the Baie Sainte-Marguerite sector.

INFORMATION

All incidents, including collisions with whales, must be reported without delay by dialling 1-866-508-9888. For any other situation concerning a marine mammal that is either dead or in trouble, contact the emergency network at 1-877-722-5346, or use VHF channel 16.

Figure 1

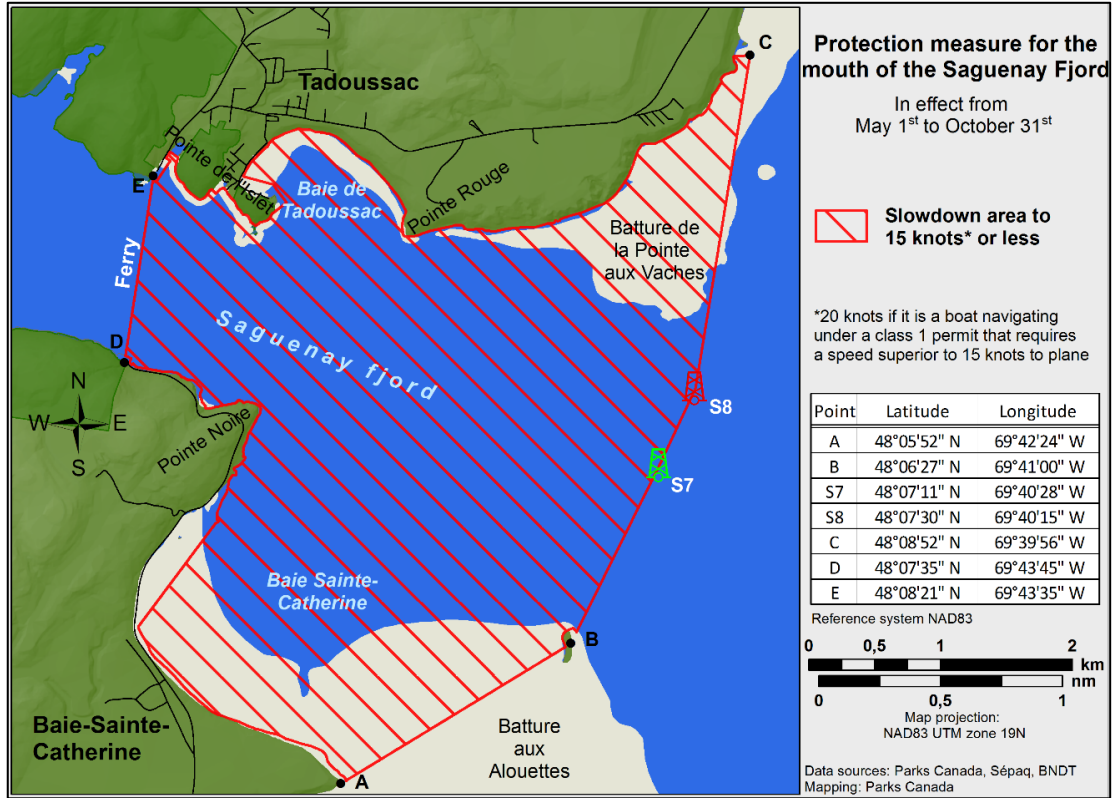
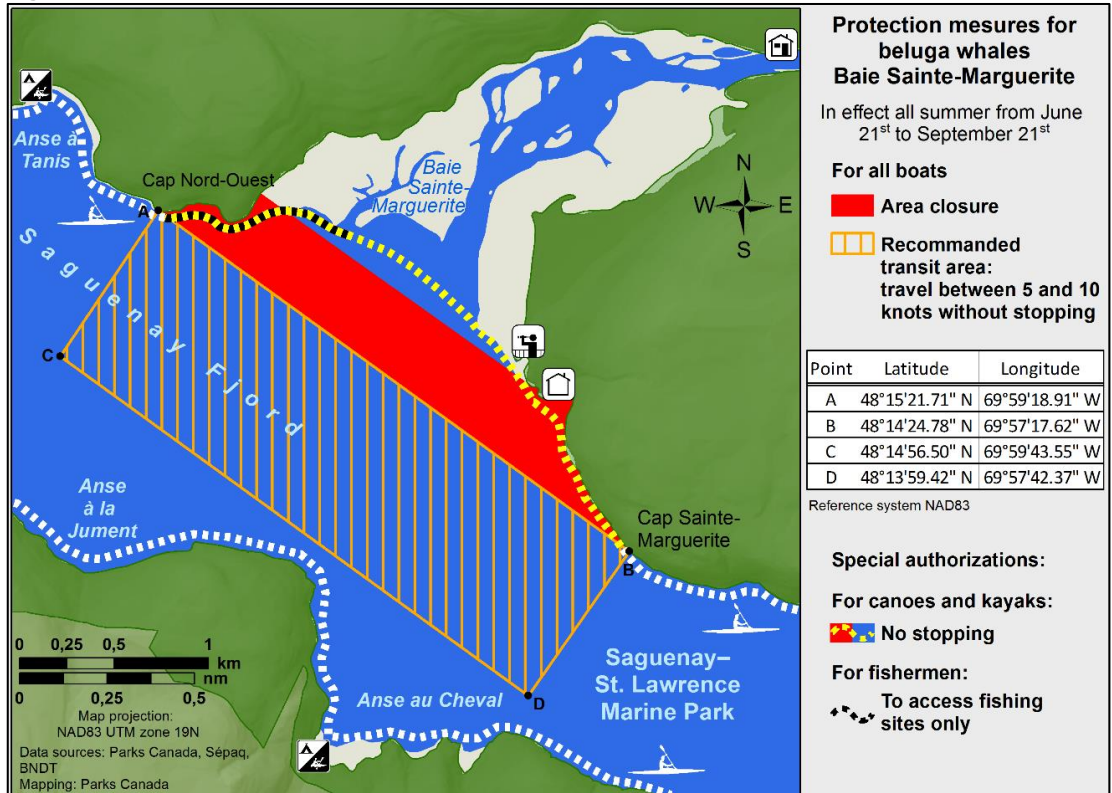


Figure 2



MONTHLY NOTICES TO MARINERS
EASTERN EDITION 07/2020
SECTION 1 – GENERAL AND SAFETY INFORMATION

***701 CANADIAN HYDROGRAPHIC SERVICE – NAUTICAL CHARTS**

CHARTS	MAIN TITLE	SCALE	PUBLISHED	CAT#	PRICE
New Charts					
5164	Lake Melville	1:100 000	27-MAR-2020	1	20.00
5165	EpINETTE Point to/à Terrington Basin	1:60 000	28-FEB-2020	1	20.00
New Editions					
2201	Georgian Bay / Baie Georgienne	1:200 000	01-MAY-2020	3	20.00
4459	Summerside Harbour and Approaches / et les approches	1:25 000	29-MAY-2020	1	20.00
Charts Permanently Withdrawn					
4728	EpINETTE Point to / à Terrington Basin				
5143	Lake Melville				

***702 CANADIAN HYDROGRAPHIC SERVICE – ELECTRONIC NAVIGATIONAL CHARTS**

S-57 ENC NUMBER	CHART TITLE
NEW PRODUCTS	
CA373469	Simpson Strait to/a Rasmussen Basin

***703 CANADIAN HYDROGRAPHIC SERVICE – RASTER DIGITAL CHARTS (BSB V3)**

CHARTS	MAIN TITLE	SCALE	PUBLISHED
New Charts			
RM-5164	Lake Melville	1:100 000	27-MAR-2020
RM-5165	EpINETTE Point to/à Terrington Basin	1:60 000	28-FEB-2020
New Editions			
RM-2201	Georgian Bay / Baie Georgienne	1:200 000	01-MAY-2020
RM-4459	Summerside Harbour and Approaches / et les approches	1:25 000	29-MAY-2020
Charts Permanently Withdrawn			
RM-4728	EpINETTE Point to / à Terrington Basin		
RM-5143	Lake Melville		

***704 TRANSPORT CANADA – SHIP SAFETY BULLETINS #12 AND #18/2020**

New and modified **Ship Safety Bulletins** have recently been posted on the Transport Canada website at www.tc.gc.ca/ssb-bsn/.

To view or download these bulletins, please click on the links below:

[SSB#12/2020](#) – Measures to Mitigate the Spread of COVID-19 on Passenger Vessels and Ferries (Modified 2020-06-30)
RDIMS#16451043

[SSB#18/2020](#) – Mobility of Asymptomatic Workers in the Marine Sector During COVID-19
RDIMS#16645826

Sign up for [e-Bulletin](#) to receive an e-mail notice each time a new Ship Safety Bulletin is published on our website.

Contact us at marinesafety-securitemaritime@tc.gc.ca or 1-855-859-3123 (Toll Free).

***705 CANADIAN COAST GUARD PUBLICATION - AMENDMENTS TO THE NOTICES TO MARINERS ANNUAL EDITION 2020 - SECTION A2, NOTICE 5: GENERAL GUIDELINES FOR AQUATIC SPECIES AT RISK AND IMPORTANT MARINE MAMMAL AREAS GENERAL REGULATORY REQUIREMENTS FOR ALL OCEANS ACT MARINE PROTECTED AREAS**

Page 2:

AMEND AS FOLLOWS:

**Protecting the North Atlantic right whale:
New speed restriction measures in the Gulf of St. Lawrence**

Due to changing migration of North Atlantic right whales and their increased presence in the Gulf of St. Lawrence, the Government of Canada has established seasonal speed restrictions of not more than **10.0 knots** in specific zones for all vessels above **13 metres** in length. Please refer to the Notices to Mariners monthly editions for additional details and consult WhaleMap for the latest right whale observations: <https://whalemap.ocean.dal.ca/>.

Transport Canada inspectors, with assistance from the Canadian Coast Guard's Marine Communications and Traffic Services, will enforce this precautionary measure. **Failure to comply will result in an administrative monetary penalty of up to \$250,000 and/or penal sanctions under the Canada Shipping Act, 2001.**

***706 GULF OF ST. LAWRENCE – PROTECTION OF THE NORTH ATLANTIC RIGHT WHALE**

Reference: Notice *504/20 is cancelled.

Due to changing migration patterns of North Atlantic right whales and their increased presence in the Gulf of St. Lawrence, the Government of Canada has established seasonal speed restrictions in specific zones. These speed restrictions are defined as "static zones", "dynamic shipping zones", "seasonal management areas", a trial "voluntary speed restriction zone" and a "restricted area". [See the map below for details.](#)

Note: Navigational Warnings with these speed restrictions are considered to be Notices to Shipping, which vessels **must follow** as per the *Interim Order Protecting North Atlantic Right Whales (Eubalaena Glacialis) in the Gulf of St Lawrence* and the *Interim Order for the protection of North Atlantic Right Whales (Eubalaena Glacialis) in and near the Shediac Valley* for the restricted area.

Speed restriction zones are described in monthly Notices to Mariners (NOTMARs), which are published by the Canadian Coast Guard (CCG). The status of these zones is broadcast through Navigational Warnings (NAVWARNs), which are published by the CCG's Marine Communications and Traffic Services (MCTS) Centres.

Changes to speed restriction zones

Based on consultations with industry and on scientific data, changes to the speed restriction zones will be effective from April 28th, 2020, while the [restricted area](#) will be implemented [as per the Interim Order for the Protection of North Atlantic Right Whales \(Eubalaena glacialis\) in and near the Shediac Valley.](#)

- Portions of the static zones located north and south of dynamic shipping zone E are now changed to seasonal management area 1 (north of dynamic shipping zone E) and seasonal management area 2 (south of dynamic shipping zone E).
- A trial voluntary speed restriction of 10.0 knots over the ground spanning from Cabot Strait (a line running from Cape North NS to Cape Ray NL) to the eastern edge of dynamic shipping zone E, at the beginning and end of the season.
- A restricted area [located in and near the Shediac Valley, determined based on aggregation of North Atlantic right whales.](#)

Please refer to the latest NAVWARN issued by the CCG-MCTS for all speed restrictions currently in effect.

Speed Restriction Measures for 2020

These restrictions will be in effect from **April 28 to November 15, 2020**.

Static zones

In the static zones, **all** vessels above **13 m** in length overall (LOA) must proceed at a speed of not more than 10.0 knots over the ground.

Coordinates for the northern static zone:

- 50° 20' N 065° 00' W
- 49° 13' N 065° 00' W
- 48° 40' N 064° 13' W
- 48° 40' N 062° 40' W
- 48° 03' N 061° 07.5' W
- 47° 58.1' N 061° 03.5' W
- 48° 00' N 061° 00' W
- 49° 04' N 061° 00' W
- 49° 04' N 062° 00' W
- 49° 43' N 063° 00' W
- 50° 20' N 063° 00' W

Coordinates for the southern static zone:

- 48° 40' N 065° 00' W
- 48° 40' N 062° 40' W
- 48° 03' N 061° 07.5' W
- 47° 58.1' N 061° 03.5' W
- 47° 10' N 062° 30' W
- 47° 10' N 065° 00' W

Mariners will be notified ahead via a NAVWARN should the speed restriction status change, due to inclement weather.

Within any static zone that is not subject to a speed restriction, mariners may proceed at a safe operational speed. Mariners are however encouraged to take into consideration the potential for their vessel striking North Atlantic right whales when considering a “safe operational speed” during navigation.

Dynamic shipping zones

There are five dynamic shipping zones (DSZ) located in the routing systems north and south of Anticosti Island: A, B, C, D and E

Coordinates for the dynamic shipping zones:

Zone A

- 49° 41' N 065° 00' W
- 49° 20' N 065° 00' W
- 49° 11' N 064° 00' W
- 49° 22' N 064° 00' W

Zone B

- 49° 22' N 064° 00' W
- 49° 11' N 064° 00' W
- 48° 48' N 063° 00' W
- 49° 00' N 063° 00' W

Zone C

- 49° 00' N 063° 00' W
- 48° 48' N 063° 00' W
- 48° 24' N 062° 00' W
- 48° 35' N 062° 00' W

Zone D

- 50° 16' N 064° 00' W
- 50° 00' N 064° 00' W
- 49° 56' N 063° 00' W
- 50° 16' N 063° 00' W

Zone E

- 48° 35' N 062° 00' W
- 48° 24' N 062° 00' W
- 48° 03' N 061° 07.5' W
- 47° 58.1' N 061° 03.5' W
- 48° 00' N 061° 00' W
- 48° 10.5' N 061° 00' W

If the Government of Canada does not detect North Atlantic right whales in these zones, vessels may transit through them at a safe operational speed.

When the Government of Canada detects a North Atlantic right whale in a dynamic shipping zone, vessels above **13 m** in length overall (LOA):

- will be notified through a NAVWARN; and
- must proceed at a speed of not more than 10.0 knots over the ground within that zone.

Speed restrictions in the dynamic shipping zones

The detection of North Atlantic right whales in one or more dynamic shipping zone(s), will trigger a speed restriction in the concerned zone(s). The speed restriction in the dynamic shipping zone(s) will be in effect for 15 days from the date of issuance of the NAVWARN. We may extend a speed restriction past the 15 days if North Atlantic right whales continue to be detected.

When a NAVWARN is issued implementing a speed restriction in one or more dynamic shipping zone(s), vessels above **13 m** in length (LOA) must not exceed a speed of 10.0 knots over the ground.

Within any zone that is not subject to a speed restriction, mariners may proceed at a safe operational speed. Mariners are however encouraged to take into consideration the potential for their vessel striking North Atlantic right whales when considering a “safe operational speed” during navigation.

Seasonal management areas

Seasonal management area 1 (SMA-1) and seasonal management area 2 (SMA-2) are speed restriction areas located north and south of dynamic shipping zone E, respectively.

Within seasonal management areas, vessels above **13 m** in length (LOA):

- must restrict their speed so as not to exceed 10.0 knots over the ground from April 28th to June 30th, 2020; and
- are allowed to proceed at safe operational speed from July 1st to November 15th, 2020, unless a North Atlantic right whale is detected. If a whale is detected, a speed restriction of 10.0 knots over the ground will be triggered for 15 days from the date of issuance of the NAVWARN. The speed restriction may be extended past the 15 days if North Atlantic right whales continue to be detected.

Coordinates for the SMA-1:

- 49° 04' N 062° 00' W
- 49° 04' N 061° 00' W
- 48° 10.5' N 061° 00' W
- 48° 35' N 062° 00' W

Coordinates for the SMA-2:

- 48° 24' N 062° 00' W
- 48° 03' N 061° 07.5' W
- 47° 58.1' N 061° 03.5' W
- 47° 26.69' N 062° 00' W

Restricted area

In the summer months, an important proportion of the total North Atlantic right whale population gathers for feeding and surface activity near the [Shediac Valley](#). Since this makes the North Atlantic right whale more susceptible to vessel collisions, a mandatory restricted area will be put in place in and near the [Shediac Valley](#). The effective date and exact location of the area were based on the observed distribution of the whales. *The Interim Order for the Protection of North Atlantic Right Whales (Eubalaena glacialis) in and near the Shediac Valley* will provide the necessary details. This information will also be communicated to mariners through navigational warnings and notices to fish harvesters.

Vessels above **13 m** in length (LOA) will be required to:

- avoid the area unless they are part of the exceptions listed in the IO;
- exempted vessels transiting the area must do so at a speed not exceeding 8.0 knots over the ground.

~~The restricted area will be determined in collaboration with the Department of Fisheries and Oceans. Once established, The location and dimension of the restricted area will not be modified.~~

Trial voluntary speed restriction in Cabot Strait

To coincide with the North Atlantic right whales entering and exiting the Gulf of St. Lawrence, we are putting in place a trial voluntary speed restriction in Cabot Strait from April 28th to June 15th, 2020, and from October 1st to November 15th, 2020.

- During this period, vessels above 13 m in length (LOA) will be asked to voluntarily reduce their speed so as to not exceed 10.0 knots over the ground.
- Outside of the restriction period, vessels will be able to proceed at safe operational speeds.

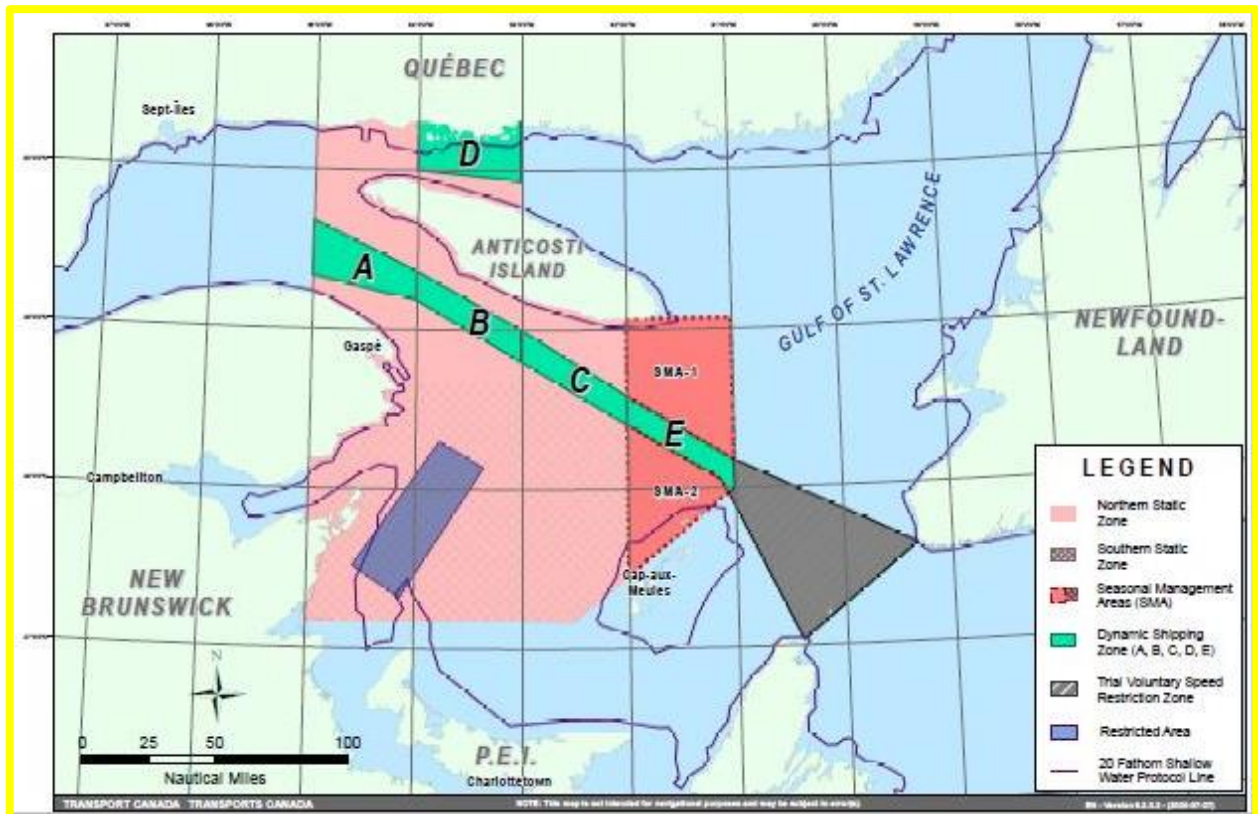
Voluntary speed restriction zone coordinates:

- 48° 10.5' N 061° 00' W
- 47° 37.2' N 059° 18.5' W
- 47° 02' N 060° 23.7' W
- 47° 58.1' N 061° 03.5' W
- 48° 00' N 061° 00' W

Map of the Gulf of St. Lawrence

The following map shows

- the speed restriction zone, in pink (static zones);
- the dynamic shipping zones, in green;
- the seasonal management areas, in dark pink; **and**
- the trial voluntary speed restriction zone, in grey; and
- **the focus of** the restricted area, **in dark blue.**



Map showing the two static zones (north and south), the five dynamic shipping zones (A, B, C, D and E), the seasonal management areas, **the restricted area**, the trial voluntary speed restriction zone and the 20 fathom shallow water protocol line.

This map is for visual representation only and is not to be used for navigation or enforcement.

NAVWARN broadcasts

The CCG-MCTS issues and publishes NAVWARNs:

- by radio broadcast; and
- online at [Canada's Maritime Information Portal](#) and its [Navigational Warnings](#) site.

Mariners must ensure they have accurate and up-to-date information about the protection of the North Atlantic right whale, as in all applicable NOTMARs and NAVWARNs.

MONTHLY NOTICES TO MARINERS
EASTERN EDITION 07/2020
SECTION 1 – GENERAL AND SAFETY INFORMATION

For the North Atlantic right whale speed restriction, the NAVWARN that is currently in effect will be provided to vessels subject to the *Vessel Traffic Services Zone Regulations* or the *Eastern Canada Vessel Traffic Services Zone Regulations*:

Outbound vessels

- at Calling-in-Point 10 (St-Laurent); or
- upon a departure downstream from the Quebec pilot station (including the Saguenay River, Chaleur Bay, Miramichi Bay, etc.)

Inbound vessels

- when a clearance to enter Canadian waters is granted

Vessels in transit

- at the last reporting point prior to entering the speed restriction area; and/or
- at 10 nautical miles prior to entering the speed restriction zone

For those vessels not subject to the above-mentioned regulations, vessel operators are required to monitor broadcasts by the Canadian Coast Guard's Marine Communications and Traffic Services (MCTS) network for the most up to date information. For marine radio frequencies and broadcast times, information may be found in the [Radio Aids to Marine Navigation](#) publication.

Aids to navigation

The Canadian Coast Guard is currently testing virtual Automatic Identification System (AIS) aids to navigation (AIS AtoN) in specific areas. These aids notify mariners of a dynamic shipping zone subject to a speed restriction, per NOTMAR 819(T)/2016.

Each dynamic shipping zone is delimited by four virtual AIS AtoN, which can be displayed on a ship's navigation equipment, such as

- Electronic Chart Display and Information System (ECDIS);
- Electronic Chart System (ECS);
- RADAR;
- Minimum Keyboard Display (MKD); and
- Electronic Nautical Chart (ENC).

The Canadian Coast Guard broadcasts the virtual AIS AtoN only when a speed restriction is in effect in one or more testing zones.

Mariners must select the virtual AIS AtoN symbol to view a message such as "SectA1 Spd Lim 10 kt." This message refers to a speed restriction in effect for a specific zone.

Note: This system is not the primary way we communicate this information.

Compliance and enforcement

You must comply with the **Interim Orders made pursuant to the *Canada Shipping Act, 2001*, and any NAVWARNs** broadcasted and published by the Canadian Coast Guard **relating to the Interim Orders, made pursuant to the *Canada Shipping Act, 2001***, aimed at regulating the navigation for the purposes of protecting the North Atlantic right whales.

If you do not comply with **the Interim Orders or** instructions in the NAVWARNs **related to** the Interim **Orders**, you could face:

- administrative monetary penalties up to a maximum of CAN \$250,000; and/or
- penal sanctions under the *Canada Shipping Act, 2001*.

If your vessel appears to have violated the speed restriction, Transport Canada Marine Safety inspectors will review all information provided through AIS and seek an explanation from the master.

MONTHLY NOTICES TO MARINERS
EASTERN EDITION 07/2020
SECTION 1 – GENERAL AND SAFETY INFORMATION

No exemptions to the speed restriction will be granted in advance. However, if a deviation from the speed restrictions is necessary for safety reasons, the following information must be entered into the bridge logbook:

- Reasons for deviation
- Speed at which vessel is operated
- Latitude and longitude at time of deviation
- Time and duration of deviation
- Master of the vessel shall sign and date the bridge logbook entry

For any deviation, Transport Canada will review and consider reasons such as

- Navigating to ensure vessel safety;
- Weather conditions;
- Force majeure (unforeseeable circumstances); and
- Responding to emergencies.

Report a North Atlantic right whale sighting

If you see a North Atlantic right whale that is entangled, injured or dead, please report it to your nearest Canadian Coast Guard Marine Communications and Traffic Services Centre, or as follows:

Southern part of the Gulf of St. Lawrence

Marine Animal Response Society
Telephone: 1-866-567-6277

Newfoundland and Labrador

Whale Release and Strandings
Telephone: 1-888-895-3003

For the Québec Sector

Marine Mammal Emergencies
Telephone: 1-877-722-5346

If you see live, free-swimming whales

- Call 1-902-440-8611 (local) or 1-844-800-8568 (toll free)
- Email: XMARWhalesightings@dfo-mpo.gc.ca

Please consult WhaleMap for the latest right whale observations:

<https://whalemap.ocean.dal.ca/>

***708 RUSTICO BAY AND / ET NEW LONDON BAY – UNLIT BUOY AID DESIGNATOR CHANGED**

Reference Chart: 4467

The designator of the following unlit buoy has been permanently changed from “JN6” to “JN14”.

New London Bay buoy JN14 (LL 6060.7) (46° 30' 05.2"N 063° 28' 08.3"W)

(G2020-045)

***710(T) MURRAY CANAL TO HEALEY FALLS LOCKS / MURRAY CANAL AUX ÉCLUSES DE HEALEY FALLS – CONSTRUCTION OPERATIONS**

Reference Chart: 2021

Construction operations, including diving operations, in progress as of July 6, 2020 between 1100 UTC and 0100 UTC at the mouth of the Trent River south of Dundas Street bridge in Trenton. The site is marked with red, green and white markers. Tug and barge on site, lit at night.

Vessels are advised to use caution when transiting the area and to keep clear of construction operations. Call 416-729-8830 for further details.

(NW-C-1012-20)

MONTHLY NOTICES TO MARINERS
EASTERN EDITION 07/2020
SECTION 2 – CHART CORRECTIONS

1431 - Baie Saint-François - New Edition - 26-DEC-2014 - NAD 1983

17-JUL-2020

LNMD. 26-APR-2019

Add green port hand lighted spar buoy, marked DV11
(See Chart No. 1, Qg)
This notice affects Electronic Navigational Chart: CA573386

45°14'55.1"N 074°09'54.8"W

(B2020006) LL(80.2) DFO(6604630-01)

1431 - Canal de Beauharnois - New Edition - 26-DEC-2014 - NAD 1983

17-JUL-2020

LNMD. 26-APR-2019

Amend Iso 2s 10m to read Iso G 2s 10m against light
(See Chart No. 1, P16)
This notice affects Electronic Navigational Chart: CA473300

45°16'41.7"N 073°55'57.3"W

(B2020007) LL(37) DFO(6604631-01)

Amend F 23m to read F G 23m against light
(See Chart No. 1, P16)
This notice affects Electronic Navigational Chart: CA473300

45°16'53.8"N 073°55'39.4"W

(B2020008) LL(37.1) DFO(6604633-01)

1433 - Île St-Régis to/à Croil Islands A-B - New Edition - 26-DEC-2014 - World Geodetic System 1984

24-JUL-2020

LNMD. 20-SEP-2019

Amend F G 30m to read F G 33m against light
(See Chart No. 1, P16)
This notice affects Electronic Navigational Chart: CA473232

45°00'44.2"N 074°40'16.2"W

(B2020011) LL(165) DFO(6604635-01)

1514 - Carillon à/to L'Original - Sheet/Feuille 1 - New Edition - 22-APR-2016 - NAD 1983

24-JUL-2020

LNMD. 29-NOV-2019

Add private light (Priv)FI R
(See Chart No. 1, P1)
This notice affects Electronic Navigational Chart: CA579157

45°37'27.8"N 074°41'29.0"W

(Q2020015) LL(12863) DFO(6410312-01)

Add private starboard hand daybeacon
(See Chart No. 1, Qt)
This notice affects Electronic Navigational Chart: CA579157

45°37'27.8"N 074°41'29.0"W

(Q2020016) LL(12863.5) DFO(6410313-01)

Add private light FI G(Priv)
(See Chart No. 1, P1)
This notice affects Electronic Navigational Chart: CA579157

45°37'27.3"N 074°41'28.5"W

(Q2020017) LL(12864) DFO(6410314-01)

Add private port hand daybeacon
(See Chart No. 1, Qt)
This notice affects Electronic Navigational Chart: CA579157

45°37'27.3"N 074°41'28.5"W

(Q2020018) LL(12864.5) DFO(6410315-01)

1514 - L'Original à/to Papineauville - Sheet/Feuille 2 - New Edition - 22-APR-2016 - NAD 1983

24-JUL-2020

LNMD. 29-NOV-2019

Add private light (Priv)FI R
(See Chart No. 1, P1)
This notice affects Electronic Navigational Chart: CA579157

45°37'27.8"N 074°41'29.0"W

(Q2020015) LL(12863) DFO(6410312-01)

MONTHLY NOTICES TO MARINERS
EASTERN EDITION 07/2020
SECTION 2 – CHART CORRECTIONS

Add	private starboard hand daybeacon (See Chart No. 1, Qt) This notice affects Electronic Navigational Chart: CA579157	45°37'27.8"N 074°41'29.0"W (Q2020016) LL(12863.5) DFO(6410313-01)
Add	private light Fl G(Priv) (See Chart No. 1, P1) This notice affects Electronic Navigational Chart: CA579157	45°37'27.3"N 074°41'28.5"W (Q2020017) LL(12864) DFO(6410314-01)
Add	private port hand daybeacon (See Chart No. 1, Qt) This notice affects Electronic Navigational Chart: CA579157	45°37'27.3"N 074°41'28.5"W (Q2020018) LL(12864.5) DFO(6410315-01)
 2241 - Port Severn to/à Christian Island - New Chart - 30-JUL-1999 - NAD 1983		
	31-JUL-2020	LNMD. 13-JUL-2018
Amend	FG 53m to read FG 46m against light	44°45'22.2"N 079°49'45.7"W (D2018015) LL(867) DFO(6604650-01)
 4012 - Yarmouth to / à Halifax - New Edition - 14-FEB-2003 - NAD 1983		
	10-JUL-2020	LNMD. 19-JUN-2020
Delete	depth of 42 metres (See Chart No. 1, I10) This notice affects Electronic Navigational Chart: CA276801	44°37'50.0"N 063°02'50.0"W DFO(6309000-02)
Add	depth of 13.3 metres (See Chart No. 1, I10) This notice affects Electronic Navigational Chart: CA276801, CA376083	44°37'47.4"N 063°02'34.8"W DFO(6309000-03)
Delete	depth of 35 metres (See Chart No. 1, I10) This notice affects Electronic Navigational Chart: CA276801, CA376083	44°36'56.0"N 063°01'05.0"W DFO(6309000-05)
Add	depth of 25.1 metres (See Chart No. 1, I10) This notice affects Electronic Navigational Chart: CA276801, CA376083	44°37'01.8"N 063°00'57.6"W DFO(6309000-06)
Delete	depth of 35 metres (See Chart No. 1, I10) This notice affects Electronic Navigational Chart: CA276801	44°36'17.0"N 062°59'36.0"W DFO(6309000-07)
Add	depth of 24.9 metres (See Chart No. 1, I10) This notice affects Electronic Navigational Chart: CA276801, CA376083	44°36'28.2"N 062°59'34.2"W DFO(6309000-08)

MONTHLY NOTICES TO MARINERS
EASTERN EDITION 07/2020
SECTION 2 – CHART CORRECTIONS

4013 - Halifax to / à Sydney - New Edition - 06-SEP-2002 - NAD 1983

10-JUL-2020

LNMD. 05-JUN-2020

Delete legend 'Fog Sig' against light 44°49'25.0"N 062°20'10.0"W
(See Chart No. 1, R20)
This notice affects Electronic Navigational Chart: CA176140, CA276204, CA376102
(F2020025) LL(602) DFO(6309001-01)

4015 - Sydney to / à Saint-Pierre - New Edition - 28-MAR-2003 - NAD 1983

17-JUL-2020

LNMD. 22-MAY-2020

Delete legend WHIS against black, yellow and black East cardinal lighted 47°03'22.0"N 056°11'18.0"W
pillar buoy
(See Chart No. 1, Qd)
This notice affects Electronic Navigational Chart: CA276091, CA376627
DFO(6308979-05)

Amend WHIS to read Bell against red and white fairway lighted pillar buoy 46°48'22.0"N 056°07'47.0"W
(See Chart No. 1, Qc, Qd)
This notice affects Electronic Navigational Chart: CA276091, CA376164
DFO(6308979-06)

Delete legend WHIS against black, yellow and black East cardinal lighted 46°47'17.0"N 056°06'02.0"W
pillar buoy
(See Chart No. 1, Qd)
This notice affects Electronic Navigational Chart: CA276091, CA376164
DFO(6308979-07)

Delete legend WHIS against yellow and black South cardinal lighted pillar buoy 46°43'49.0"N 056°12'54.0"W
(See Chart No. 1, Qd)
This notice affects Electronic Navigational Chart: CA276091, CA376164
DFO(6308979-08)

Delete legend WHIS against yellow, black and yellow West cardinal lighted 46°45'25.0"N 056°15'22.0"W
pillar buoy
(See Chart No. 1, Qd)
This notice affects Electronic Navigational Chart: CA276091, CA376164
DFO(6308979-09)

Replace depth of 18 fathoms with depth of 14 fathoms 47°06'48.0"N 056°17'48.0"W
(See Chart No. 1, I10)
DFO(6308997-02)

Replace depth of 17 fathoms with depth of 13 fathoms 46°43'24.0"N 056°14'12.0"W
(See Chart No. 1, I10)
DFO(6308997-05)

Replace depth of 24 fathoms with depth of 22 fathoms 46°43'00.0"N 056°15'30.0"W
(See Chart No. 1, I10)
This notice affects Electronic Navigational Chart: CA276091
DFO(6308997-07)

4016 - Saint-Pierre to / à St. John's - New Edition - 06-JUN-2003 - NAD 1983

17-JUL-2020

LNMD. 10-APR-2020

Delete legend WHIS against black, yellow and black East cardinal lighted 47°03'22.0"N 056°11'19.0"W
pillar buoy
(See Chart No. 1, Qd)
This notice affects Electronic Navigational Chart: CA276091, CA376627
DFO(6308979-05)

MONTHLY NOTICES TO MARINERS
EASTERN EDITION 07/2020
SECTION 2 – CHART CORRECTIONS

Amend	WHIS to read Bell against red and white fairway lighted pillar buoy (See Chart No. 1, Qc, Qd) This notice affects Electronic Navigational Chart: CA276091, CA376164	46°48'26.0"N 056°07'45.0"W <i>DFO(6308979-06)</i>
Delete	legend WHIS against black, yellow and black East cardinal lighted pillar buoy (See Chart No. 1, Qd) This notice affects Electronic Navigational Chart: CA276091, CA376164	46°47'20.0"N 056°06'19.0"W <i>DFO(6308979-07)</i>
Delete	legend WHIS against yellow and black South cardinal lighted pillar buoy (See Chart No. 1, Qd) This notice affects Electronic Navigational Chart: CA276091, CA376164	46°43'47.0"N 056°12'56.0"W <i>DFO(6308979-08)</i>
Delete	legend WHIS against yellow, black and yellow West cardinal lighted pillar buoy (See Chart No. 1, Qd) This notice affects Electronic Navigational Chart: CA276091, CA376164	46°45'28.0"N 056°15'11.0"W <i>DFO(6308979-09)</i>
Replace	depth of 18 fathoms with depth of 14 fathoms (See Chart No. 1, I10)	47°06'48.0"N 056°17'48.0"W <i>DFO(6308997-02)</i>
Replace	depth of 17 fathoms with depth of 13 fathoms (See Chart No. 1, I10)	46°43'24.0"N 056°14'12.0"W <i>DFO(6308997-05)</i>
Replace	depth of 24 fathoms with depth of 22 fathoms (See Chart No. 1, I10) This notice affects Electronic Navigational Chart: CA276091	46°43'00.0"N 056°15'30.0"W <i>DFO(6308997-07)</i>
4021 - Pointe Amour à / to Cape Whittle et / and Cape George - New Edition - 01-NOV-2002 - NAD 1983		
03-JUL-2020		LNM/D. 27-MAR-2020
Delete	depth of 22 fathoms (See Chart No. 1, I10) This notice affects Electronic Navigational Chart: CA276138	50°51'54.2"N 057°06'06.8"W <i>DFO(6308825-02)</i>
Add	depth of 20 fathoms (See Chart No. 1, I10) This notice affects Electronic Navigational Chart: CA276138	50°52'06.1"N 057°06'13.4"W <i>DFO(6308825-03)</i>
Delete	depth of 18 fathoms (See Chart No. 1, I10) This notice affects Electronic Navigational Chart: CA276138	50°54'32.1"N 057°05'33.4"W <i>DFO(6308825-04)</i>
Add	depth of 15 fathoms (See Chart No. 1, I10) This notice affects Electronic Navigational Chart: CA276138	50°54'25.7"N 057°05'20.1"W <i>DFO(6308825-05)</i>

MONTHLY NOTICES TO MARINERS
EASTERN EDITION 07/2020
SECTION 2 – CHART CORRECTIONS

Add	depth of 11 fathoms (See Chart No. 1, I10) This notice affects Electronic Navigational Chart: CA276138	50°56'04.2"N 057°05'51.5"W <i>DFO(6308825-06)</i>
Delete	depth of 12 fathoms (See Chart No. 1, I10) This notice affects Electronic Navigational Chart: CA276138	50°55'29.1"N 057°12'47.6"W <i>DFO(6308825-07)</i>
Add	depth of 10 fathoms, 5 feet (See Chart No. 1, I10) This notice affects Electronic Navigational Chart: CA276138	50°55'36.1"N 057°12'38.9"W <i>DFO(6308825-08)</i>
4047 - St. Pierre Bank / Banc de Saint-Pierre to / au Whale Bank / Banc de la Baleine - New Edition - 09-OCT-1998 - NAD		
1983		
17-JUL-2020		LNMD. 10-APR-2020
Replace	wreck showing a portion of superstructure with wreck, least depth unknown, dangerous to surface navigation with legend "PD" (See Chart No. 1, K24, K28, B8) This notice affects Electronic Navigational Chart: CA276091, CA376627	47°06'09.0"N 056°20'05.0"W <i>DFO(6308979-02)</i>
Delete	legend WHIS against black, yellow and black East cardinal lighted pillar buoy (See Chart No. 1, Qd) This notice affects Electronic Navigational Chart: CA276091, CA376627	47°03'22.0"N 056°11'17.0"W <i>DFO(6308979-05)</i>
Amend	WHIS to read Bell against red and white fairway lighted pillar buoy (See Chart No. 1, Qc, Qd) This notice affects Electronic Navigational Chart: CA276091, CA376164	46°48'21.0"N 056°07'33.0"W <i>DFO(6308979-06)</i>
Delete	legend WHIS against black, yellow and black East cardinal lighted pillar buoy (See Chart No. 1, Qd) This notice affects Electronic Navigational Chart: CA276091, CA376164	46°47'17.0"N 056°06'04.0"W <i>DFO(6308979-07)</i>
Delete	legend WHIS against yellow and black South cardinal lighted pillar buoy (See Chart No. 1, Qd) This notice affects Electronic Navigational Chart: CA276091, CA376164	46°43'52.0"N 056°12'54.0"W <i>DFO(6308979-08)</i>
Delete	legend WHIS against yellow, black and yellow West cardinal lighted pillar buoy (See Chart No. 1, Qd) This notice affects Electronic Navigational Chart: CA276091, CA376164	46°45'29.0"N 056°15'12.0"W <i>DFO(6308979-09)</i>
Replace	depth of 44 metres with depth of 40 metres (See Chart No. 1, I10) This notice affects Electronic Navigational Chart: CA276091	46°43'00.0"N 056°15'30.0"W <i>DFO(6308997-07)</i>

MONTHLY NOTICES TO MARINERS
EASTERN EDITION 07/2020
SECTION 2 – CHART CORRECTIONS

4116 - Approaches to / Approches à Saint John - New Edition - 31-AUG-2007 - NAD 1983

03-JUL-2020

LNMD. 15-NOV-2019

Add depth of 4.5 metres
(See Chart No. 1, I10) 45°12'38.0"N 066°01'09.3"W
This notice affects Electronic Navigational Chart: CA376011
DFO(6309071-06)

Add depth of 7.9 metres
(See Chart No. 1, I10) 45°12'44.3"N 066°01'19.8"W
This notice affects Electronic Navigational Chart: CA376011
DFO(6309071-07)

4117 - Saint John Harbour and Approaches / et les approches - New Edition - 29-MAY-2009 - NAD 1983

03-JUL-2020

LNMD. 13-JUL-2018

Affix patch 45°14'00.0"N 066°02'30.0"W
Download Patch - ftp://ftp.dfo-mpo.gc.ca/patches/4117_6309071_1_202006010748.pdf
This notice affects Electronic Navigational Chart: CA576005
DFO(6309071-01)

Affix patch 45°12'45.0"N 066°01'00.0"W
Download Patch - ftp://ftp.dfo-mpo.gc.ca/patches/4117_6309071_2_202006010752.pdf
This notice affects Electronic Navigational Chart: CA576005
DFO(6309071-02)

Add depth of 20 metres
(See Chart No. 1, I10) 45°12'17.0"N 065°59'24.8"W
This notice affects Electronic Navigational Chart: CA576005
DFO(6309071-03)

Add depth of 11.9 metres
(See Chart No. 1, I10) 45°12'17.8"N 065°59'17.2"W
This notice affects Electronic Navigational Chart: CA576005
DFO(6309071-04)

4227 - Country Harbour to / au Ship Harbour - New Chart - 24-MAY-1991 - NAD 1983

10-JUL-2020

LNMD. 06-DEC-2019

Delete legend 'Fog Sig 60s' against light 44°49'29.0"N 062°20'16.0"W
(See Chart No. 1, R20)
This notice affects Electronic Navigational Chart: CA176140, CA276204, CA376102
(F2020025) LL(602) DFO(6309001-01)

4235 - Barren Island to / à Taylors Head - New Edition - 28-APR-2000 - NAD 1983

10-JUL-2020

LNMD. 31-MAY-2019

Delete legend 'FogSig60s' against light 44°49'29.2"N 062°20'16.0"W
(See Chart No. 1, R20)
This notice affects Electronic Navigational Chart: CA176140, CA276204, CA376102
(F2020025) LL(602) DFO(6309001-01)

4236 - Taylors Head to / à Shut-in Island - New Edition - 13-JUL-2001 - NAD 1983

10-JUL-2020

LNMD. 13-MAR-2020

Add depth of 25.6 metres
(See Chart No. 1, I10) 44°37'43.2"N 063°05'58.2"W
This notice affects Electronic Navigational Chart: CA376083
DFO(6309000-01)

MONTHLY NOTICES TO MARINERS
EASTERN EDITION 07/2020
SECTION 2 – CHART CORRECTIONS

Add	depth of 13.3 metres (See Chart No. 1, I10) This notice affects Electronic Navigational Chart: CA276801, CA376083	44°37'47.4"N 063°02'34.8"W <i>DFO(6309000-03)</i>
Add	depth of 12.5 metres (See Chart No. 1, I10) This notice affects Electronic Navigational Chart: CA376083	44°37'52.2"N 063°00'58.8"W <i>DFO(6309000-04)</i>
Delete	depth of 35 metres (See Chart No. 1, I10) This notice affects Electronic Navigational Chart: CA276801, CA376083	44°37'02.3"N 063°00'51.0"W <i>DFO(6309000-05)</i>
Add	depth of 25.1 metres (See Chart No. 1, I10) This notice affects Electronic Navigational Chart: CA276801, CA376083	44°37'01.8"N 063°00'57.6"W <i>DFO(6309000-06)</i>
Add	depth of 24.9 metres (See Chart No. 1, I10) This notice affects Electronic Navigational Chart: CA276801, CA376083	44°36'28.2"N 062°59'34.2"W <i>DFO(6309000-08)</i>
Add	depth of 11.9 metres (See Chart No. 1, I10) This notice affects Electronic Navigational Chart: CA276801, CA376083	44°36'09.6"N 062°58'01.2"W <i>DFO(6309000-09)</i>
4320 - Egg Island to / à West Ironbound Island - New Edition - 26-SEP-1997 - NAD 1983		
10-JUL-2020		LNM/D. 27-MAR-2020
Add	depth of 14 fathoms (See Chart No. 1, I10) This notice affects Electronic Navigational Chart: CA376083	44°37'43.2"N 063°05'58.2"W <i>DFO(6309000-01)</i>
Delete	depth of 23 fathoms (See Chart No. 1, I10) This notice affects Electronic Navigational Chart: CA276801	44°37'49.0"N 063°02'47.0"W <i>DFO(6309000-02)</i>
Add	depth of 7 fathoms, 2 feet (See Chart No. 1, I10) This notice affects Electronic Navigational Chart: CA276801, CA376083	44°37'47.4"N 063°02'34.8"W <i>DFO(6309000-03)</i>
Delete	depth of 19 fathoms (See Chart No. 1, I10) This notice affects Electronic Navigational Chart: CA276801, CA376083	44°36'59.0"N 063°01'01.0"W <i>DFO(6309000-05)</i>
Add	depth of 14 fathoms (See Chart No. 1, I10) This notice affects Electronic Navigational Chart: CA276801, CA376083	44°37'01.8"N 063°00'57.6"W <i>DFO(6309000-06)</i>

MONTHLY NOTICES TO MARINERS
EASTERN EDITION 07/2020
SECTION 2 – CHART CORRECTIONS

Delete	depth of 19 fathoms (See Chart No. 1, I10) This notice affects Electronic Navigational Chart: CA276801	44°36'19.0"N 062°59'34.0"W <i>DFO(6309000-07)</i>
Add	depth of 14 fathoms (See Chart No. 1, I10) This notice affects Electronic Navigational Chart: CA276801, CA376083	44°36'28.2"N 062°59'34.2"W <i>DFO(6309000-08)</i>
Add	depth of 6 fathoms, 3 feet (See Chart No. 1, I10) This notice affects Electronic Navigational Chart: CA276801, CA376083	44°36'09.6"N 062°58'01.2"W <i>DFO(6309000-09)</i>
 4384 - Pearl Island to / à Cape La Have - New Edition - 10-JAN-2003 - NAD 1983		
	24-JUL-2020	LNMD. 27-MAR-2020
Add	drying height of 0.1 metres (See Chart No. 1, I15) This notice affects Electronic Navigational Chart: CA476664	44°17'14.1"N 064°21'02.4"W <i>DFO(6309105-02)</i>
 4395 - LaHave River: Riverport to / à Conquerall Bank - New Edition - 04-JUL-2003 - NAD 1983		
	24-JUL-2020	LNMD. 05-SEP-2008
Delete	depth of 3 feet (See Chart No. 1, I10)	44°17'14.1"N 064°21'04.2"W <i>DFO(6309105-01)</i>
Add	drying height of 0 feet (See Chart No. 1, I15) This notice affects Electronic Navigational Chart: CA476664	44°17'14.1"N 064°21'02.4"W <i>DFO(6309105-02)</i>
 4404 - Cape George to / à Pictou - New Edition - 28-FEB-2014 - NAD 1983		
	10-JUL-2020	LNMD. 05-JUN-2020
Replace	red starboard hand lighted pillar buoy FI R, marked SA2 with red starboard hand lighted spar buoy FI R, marked SA2 (See Chart No. 1, Qf)	45°40'00.2"N 062°28'33.7"W <i>(G2020035) LL(896.5) DFO(6308994-01)</i>
 4406 - Tryon Shoals to / à Cape Egmont - New Edition - 27-FEB-1998 - NAD 1983		
	24-JUL-2020	LNMD. 06-MAR-2020
Replace	depth of 4.9 metres with depth of 4 metres (See Chart No. 1, I10) This notice affects Electronic Navigational Chart: CA376178	45°57'05.2"N 063°51'18.0"W <i>DFO(6308929-01)</i>
Delete	depth of 4.9 metres (See Chart No. 1, I10) This notice affects Electronic Navigational Chart: CA376178	45°56'45.0"N 063°51'14.0"W <i>DFO(6308929-02)</i>
Add	depth of 4.1 metres (See Chart No. 1, I10) This notice affects Electronic Navigational Chart: CA376178	45°56'47.3"N 063°51'16.7"W <i>DFO(6308929-03)</i>

MONTHLY NOTICES TO MARINERS
EASTERN EDITION 07/2020
SECTION 2 – CHART CORRECTIONS

Delete	depth of 2.7 metres (See Chart No. 1, I10) This notice affects Electronic Navigational Chart: CA376178	45°55'41.2"N 063°48'47.5"W <i>DFO(6308929-04)</i>
Add	depth of 2.3 metres (See Chart No. 1, I10) This notice affects Electronic Navigational Chart: CA376178	45°55'40.0"N 063°48'49.0"W <i>DFO(6308929-05)</i>
Delete	depth of 4.3 metres (See Chart No. 1, I10) This notice affects Electronic Navigational Chart: CA376178	45°54'27.5"N 063°47'38.4"W <i>DFO(6308929-06)</i>
Add	depth of 3.6 metres (See Chart No. 1, I10) This notice affects Electronic Navigational Chart: CA376178	45°54'28.6"N 063°47'43.2"W <i>DFO(6308929-07)</i>
Delete	depth of 6.7 metres (See Chart No. 1, I10) This notice affects Electronic Navigational Chart: CA376178	45°55'24.1"N 063°44'05.2"W <i>DFO(6308929-08)</i>
Add	depth of 6.1 metres (See Chart No. 1, I10) This notice affects Electronic Navigational Chart: CA376178	45°55'22.4"N 063°44'04.6"W <i>DFO(6308929-09)</i>
Delete	depth of 7.3 metres (See Chart No. 1, I10) This notice affects Electronic Navigational Chart: CA376178	45°52'57.3"N 063°34'07.0"W <i>DFO(6308929-10)</i>
Add	depth of 4.6 metres (See Chart No. 1, I10) This notice affects Electronic Navigational Chart: CA376178	45°52'53.8"N 063°34'07.5"W <i>DFO(6308929-11)</i>
4445 - Merigomish Harbour - New Edition - 23-MAY-2003 - NAD 1983		
10-JUL-2020		LNMD. 27-OCT-2017
Replace	red starboard hand lighted pillar buoy FI R, marked SA2 with red starboard hand lighted spar buoy FI R, marked SA2 (See Chart No. 1, Qf)	45°40'00.2"N 062°28'33.7"W <i>(G2020035) LL(896.5) DFO(6308994-01)</i>
4491 - Malpeque Bay - New Edition - 13-DEC-2002 - NAD 1983		
31-JUL-2020		LNMD. 16-NOV-2018
Delete	red starboard hand conical lighted buoy FI R, marked JP6 (See Chart No. 1, Qf)	46°34'31.1"N 063°39'07.4"W <i>(G2020095) LL(1065.5) DFO(6309074-01)</i>
Add	yellow cautionary lighted spar buoy FI Y, marked JPA (See Chart No. 1, Qm)	46°34'30.7"N 063°39'09.6"W <i>(G2020096) LL(1065.2) DFO(6309075-01)</i>

MONTHLY NOTICES TO MARINERS
EASTERN EDITION 07/2020
SECTION 2 – CHART CORRECTIONS

4592 - Little Bay Island to / à League Rock - New Edition - 10-OCT-2003 - NAD 1983

24-JUL-2020

LNMD. 27-NOV-2015

Amend FI to read FI 6s6m5M against light
(See Chart No. 1, P16)
This notice affects Electronic Navigational Chart: CA376656
49°35'18.0"N 055°43'19.0"W
(N2020033) LL(334) DFO(6309003-01)

4624 - Long Island to / à St. Lawrence Harbours - New Edition - 07-JAN-2000 - NAD 1983

17-JUL-2020

LNMD. 22-NOV-2019

Add wreck, least depth unknown with legend 'Rep (2020)'
(See Chart No. 1, K29, I3.2)
This notice affects Electronic Navigational Chart: CA376176
46°40'30.0"N 055°01'54.0"W
DFO(6309096-01)

4625 - Burin Peninsula to / à Saint-Pierre - New Edition - 24-JAN-2003 - NAD 1983

17-JUL-2020

LNMD. 27-MAR-2020

Delete depth of 12 fathoms
(See Chart No. 1, I10)
This notice affects Electronic Navigational Chart: CA376627
47°03'55.0"N 056°13'03.0"W
DFO(6308979-03)

Add depth of 7 fathoms, 5 feet
(See Chart No. 1, I10)
This notice affects Electronic Navigational Chart: CA376627
47°03'55.3"N 056°12'55.5"W
DFO(6308979-04)

Delete legend WHIS against black, yellow and black East cardinal lighted
pillar buoy, marked Les Rochers-SPM
(See Chart No. 1, Qd)
This notice affects Electronic Navigational Chart: CA276091, CA376627
47°03'20.2"N 056°11'38.3"W
DFO(6308979-05)

Amend WHIS to read Bell against red and white fairway lighted pillar buoy,
marked Nord-Est-SPM
(See Chart No. 1, Qc, Qd)
This notice affects Electronic Navigational Chart: CA276091, CA376164
46°48'21.2"N 056°07'38.2"W
DFO(6308979-06)

Delete legend WHIS against black, yellow and black East cardinal lighted
pillar buoy, marked Grande-Basse-SPM
(See Chart No. 1, Qd)
This notice affects Electronic Navigational Chart: CA276091, CA376164
46°47'12.1"N 056°06'06.0"W
DFO(6308979-07)

Delete legend WHIS against yellow and black South cardinal lighted pillar
buoy, marked La Marne-SPM
(See Chart No. 1, Qd)
This notice affects Electronic Navigational Chart: CA276091, CA376164
46°43'48.2"N 056°13'12.6"W
DFO(6308979-08)

Delete legend WHIS against yellow, black and yellow West cardinal lighted
pillar buoy, marked Savoyard-SPM
(See Chart No. 1, Qd)
This notice affects Electronic Navigational Chart: CA276091, CA376164
46°45'25.6"N 056°15'09.2"W
DFO(6308979-09)

MONTHLY NOTICES TO MARINERS
EASTERN EDITION 07/2020
SECTION 2 – CHART CORRECTIONS

Delete	depth of 17 fathoms (See Chart No. 1, I10) This notice affects Electronic Navigational Chart: CA376164	46°43'28.0"N 056°14'16.0"W <i>DFO(6308997-03)</i>
Add	depth of 13 fathoms (See Chart No. 1, I10) This notice affects Electronic Navigational Chart: CA376164	46°43'24.0"N 056°14'12.0"W <i>DFO(6308997-04)</i>
Add	depth of 22 fathoms (See Chart No. 1, I10) This notice affects Electronic Navigational Chart: CA376164	46°43'00.0"N 056°15'30.0"W <i>DFO(6308997-06)</i>
4626 - Saint-Pierre and / et Miquelon (France) - New Edition - 24-JAN-2003 - NAD 1983		
17-JUL-2020		LNMD. 11-OCT-2019
Delete	legend WHIS against black and yellow North cardinal lighted pillar buoy (See Chart No. 1, Qd) This notice affects Electronic Navigational Chart: CA376627	47°06'35.6"N 056°20'23.6"W <i>DFO(6308979-01)</i>
Replace	wreck showing a portion of superstructure with wreck, least depth unknown, dangerous to surface navigation with legend "PD" (See Chart No. 1, K24, K28, B8) This notice affects Electronic Navigational Chart: CA276091, CA376627	47°06'01.0"N 056°20'10.3"W <i>DFO(6308979-02)</i>
Delete	depth of 12 fathoms (See Chart No. 1, I10) This notice affects Electronic Navigational Chart: CA376627	47°03'56.2"N 056°13'02.0"W <i>DFO(6308979-03)</i>
Add	depth of 7 fathoms, 5 feet (See Chart No. 1, I10) This notice affects Electronic Navigational Chart: CA376627	47°03'55.3"N 056°12'55.5"W <i>DFO(6308979-04)</i>
Delete	legend WHIS against black, yellow and black East cardinal lighted pillar buoy, marked Les Rochers-SPM (See Chart No. 1, Qd) This notice affects Electronic Navigational Chart: CA276091, CA376627	47°03'20.6"N 056°11'40.0"W <i>DFO(6308979-05)</i>
Amend	WHIS to read Bell against red and white fairway lighted pillar buoy, marked Nord-Est-SPM (See Chart No. 1, Qc, Qd) This notice affects Electronic Navigational Chart: CA276091, CA376164	46°48'20.0"N 056°07'37.2"W <i>DFO(6308979-06)</i>
Delete	legend WHIS against black, yellow and black East cardinal lighted pillar buoy, marked Grande Basse-SPM (See Chart No. 1, Qd) This notice affects Electronic Navigational Chart: CA276091, CA376164	46°47'12.1"N 056°06'06.0"W <i>DFO(6308979-07)</i>

MONTHLY NOTICES TO MARINERS
EASTERN EDITION 07/2020
SECTION 2 – CHART CORRECTIONS

Delete	legend WHIS against yellow and black South cardinal lighted pillar buoy, marked La Marne-SPM (See Chart No. 1, Qd) This notice affects Electronic Navigational Chart: CA276091, CA376164	46°43'48.3"N 056°13'12.7"W <i>DFO(6308979-08)</i>
Delete	legend WHIS against yellow, black and yellow West cardinal lighted pillar buoy, marked Savoyard-SPM (See Chart No. 1, Qd) This notice affects Electronic Navigational Chart: CA276091, CA376164	46°45'25.8"N 056°15'13.8"W <i>DFO(6308979-09)</i>
Delete	orange and white mooring barrel buoy (See Chart No. 1, Q40) This notice affects Electronic Navigational Chart: CA376627	47°06'48.5"N 056°20'11.8"W <i>DFO(6308983-01)</i>
Delete	orange and white mooring barrel buoy (See Chart No. 1, Q40) This notice affects Electronic Navigational Chart: CA376627	47°06'39.8"N 056°20'02.6"W <i>DFO(6308983-02)</i>
Add	obstruction, depth unknown (See Chart No. 1, K40) This notice affects Electronic Navigational Chart: CA376627	47°06'19.6"N 056°19'28.7"W <i>DFO(6308983-03)</i>
Delete	orange and white mooring barrel buoy (See Chart No. 1, Q40) This notice affects Electronic Navigational Chart: CA376627	47°05'59.8"N 056°18'53.9"W <i>DFO(6308983-04)</i>
Delete	orange and white mooring barrel buoy (See Chart No. 1, Q40) This notice affects Electronic Navigational Chart: CA376627	47°05'53.0"N 056°18'57.0"W <i>DFO(6308983-05)</i>
Delete	depth of 18 fathoms (See Chart No. 1, I10) This notice affects Electronic Navigational Chart: CA376627	47°06'46.0"N 056°17'37.7"W <i>DFO(6308997-01)</i>
Replace	depth of 17 fathoms with depth of 13 fathoms (See Chart No. 1, I10)	46°43'24.0"N 056°14'12.0"W <i>DFO(6308997-05)</i>
Add	depth of 22 fathoms (See Chart No. 1, I10) This notice affects Electronic Navigational Chart: CA376164	46°43'00.0"N 056°15'30.0"W <i>DFO(6308997-06)</i>
Add	depth of 14 fathoms (See Chart No. 1, I10) This notice affects Electronic Navigational Chart: CA376627	47°06'48.0"N 056°17'48.0"W <i>DFO(6308997-08)</i>

MONTHLY NOTICES TO MARINERS
EASTERN EDITION 07/2020
SECTION 2 – CHART CORRECTIONS

4643 - Île Saint-Pierre (France) - New Edition - 28-MAR-2003 - NAD 1983

10-JUL-2020

LNMD. 11-OCT-2019

Add pilot boarding station
(See Chart No. 1, T1.1)
This notice affects Electronic Navigational Chart: CA376164
46°48'20.1"N 056°07'48.3"W
DFO(6308998-01)

17-JUL-2020

LNMD. 10-JUL-2020

Amend WHIS to read Bell against red and white fairway lighted pillar buoy,
marked Nord-Est-SPM
(See Chart No. 1, Qc, Qd)
This notice affects Electronic Navigational Chart: CA276091, CA376164
46°48'20.0"N 056°07'37.5"W
DFO(6308979-06)

Delete legend WHIS against black, yellow and black East cardinal lighted
pillar buoy, marked Grande Basse SPM
(See Chart No. 1, Qd)
This notice affects Electronic Navigational Chart: CA276091, CA376164
46°47'15.9"N 056°06'03.9"W
DFO(6308979-07)

Delete legend WHIS against yellow, black and yellow West cardinal lighted
pillar buoy, marked Savoyard SPM
(See Chart No. 1, Qd)
This notice affects Electronic Navigational Chart: CA276091, CA376164
46°45'25.6"N 056°15'09.1"W
DFO(6308979-09)

4680 - Hawkes Bay to / à Ste Geneviève Bay including / y compris St. John Bay - New Edition - 07-NOV-2003 - NAD 1983

03-JUL-2020

LNMD. 10-APR-2020

Affix patch
Download Patch - ftp://ftp.dfo-mpo.gc.ca/patches/4680_6308825_1_202005110636.pdf
50°55'00.0"N 057°10'00.0"W
DFO(6308825-01)

4730 - Nain to / à Domino Point - New Edition - 31-MAY-2002 - Unknown

10-JUL-2020

LNMD. 17-NOV-2017

Amend FI 3s 25ft to read FI 4s25ft against light
(See Chart No. 1, P16)
This notice affects Electronic Navigational Chart: CA276652, CA376368
55°57'27.9"N 060°23'26.5"W
(N2020042) LL(323.3) DFO(6309009-01)

4820 - Cape Freels to / à Exploits Islands - New Chart - 01-JUL-2005 - NAD 1983

03-JUL-2020

LNMD. 17-AUG-2018

Amend FI G(Priv) to read FI G against light
(See Chart No. 1, P16)
This notice affects Electronic Navigational Chart: CA376655, CA476814
49°40'07.7"N 054°24'49.0"W
(N2020041) LL(372) DFO(6309008-01)

4821 - White Bay and / et Notre Dame Bay - New Chart - 23-APR-2004 - NAD 1983

24-JUL-2020

LNMD. 10-APR-2020

Amend FI 6s8m6M to read FI 6s6m5M against light
(See Chart No. 1, P16)
This notice affects Electronic Navigational Chart: CA376656
49°35'22.1"N 055°43'14.0"W
(N2020033) LL(334) DFO(6309003-01)

MONTHLY NOTICES TO MARINERS
EASTERN EDITION 07/2020
SECTION 2 – CHART CORRECTIONS

4827 - Hare Bay to / à Fortune Head - New Chart - 13-AUG-2004 - NAD 1983

17-JUL-2020

LNM/D. 11-OCT-2019

Delete	legend WHIS against black and yellow North cardinal lighted pillar buoy (See Chart No. 1, Qd) This notice affects Electronic Navigational Chart: CA376627	47°06'36.0"N 056°20'22.0"W <i>DFO(6308979-01)</i>
Replace	wreck showing a portion of superstructure with wreck, least depth unknown, dangerous to surface navigation with legend "PD" (See Chart No. 1, K24, K28, B8) This notice affects Electronic Navigational Chart: CA276091, CA376627	47°06'01.0"N 056°20'10.3"W <i>DFO(6308979-02)</i>
Delete	depth of 21.9 metres (See Chart No. 1, I10) This notice affects Electronic Navigational Chart: CA376627	47°03'56.9"N 056°13'01.2"W <i>DFO(6308979-03)</i>
Add	depth of 14.4 metres (See Chart No. 1, I10) This notice affects Electronic Navigational Chart: CA376627	47°03'55.3"N 056°12'55.5"W <i>DFO(6308979-04)</i>
Delete	legend WHIS against black, yellow and black East cardinal lighted pillar buoy, marked Les Rochers-SPM (See Chart No. 1, Qd) This notice affects Electronic Navigational Chart: CA276091, CA376627	47°03'20.7"N 056°11'39.8"W <i>DFO(6308979-05)</i>
Delete	orange and white mooring barrel buoy (See Chart No. 1, Q40) This notice affects Electronic Navigational Chart: CA376627	47°06'48.3"N 056°20'12.0"W <i>DFO(6308983-01)</i>
Delete	orange and white mooring barrel buoy (See Chart No. 1, Q40) This notice affects Electronic Navigational Chart: CA376627	47°06'39.9"N 056°19'59.6"W <i>DFO(6308983-02)</i>
Add	obstruction, depth unknown (See Chart No. 1, K40) This notice affects Electronic Navigational Chart: CA376627	47°06'19.6"N 056°19'28.7"W <i>DFO(6308983-03)</i>
Delete	orange and white mooring barrel buoy (See Chart No. 1, Q40) This notice affects Electronic Navigational Chart: CA376627	47°05'59.8"N 056°18'54.0"W <i>DFO(6308983-04)</i>
Delete	orange and white mooring barrel buoy (See Chart No. 1, Q40) This notice affects Electronic Navigational Chart: CA376627	47°05'52.6"N 056°19'02.7"W <i>DFO(6308983-05)</i>
Delete	depth of 33 metres (See Chart No. 1, I10) This notice affects Electronic Navigational Chart: CA376627	47°06'46.0"N 056°17'36.7"W <i>DFO(6308997-01)</i>

MONTHLY NOTICES TO MARINERS
EASTERN EDITION 07/2020
SECTION 2 – CHART CORRECTIONS

Add depth of 25 metres 47°06'48.0"N 056°17'48.0"W
(See Chart No. 1, I10)
This notice affects Electronic Navigational Chart: CA376627
DFO(6308997-08)

4831 - Fortune Bay: Northern Portion / Partie Nord - New Chart - 26-DEC-1986 - NAD 1983
31-JUL-2020

LNM/D. 10-APR-2020

Amend FI3s62m to read FI 4s62m against light 47°33'28.5"N 054°52'33.0"W
(See Chart No. 1, P16)
This notice affects Electronic Navigational Chart: CA276274, CA376316
(N2020038) LL(113) DFO(6309013-01)

4862 - Carmanville to / à Bacalhoa Island and / et Fogo - New Chart - 26-DEC-2003 - NAD 1983
03-JUL-2020

LNM/D. 05-JUL-2019

Amend FIG 6s to read FI G 5s against light 49°40'07.7"N 054°24'49.5"W
(See Chart No. 1, P16)
This notice affects Electronic Navigational Chart: CA376655, CA476814
(N2020041) LL(372) DFO(6309008-01)

24-JUL-2020 LNM/D. 03-JUL-2020

Amend FI 6s11m6M to read FI 4s11m6M against light 49°36'41.8"N 054°27'09.6"W
(See Chart No. 1, P16)
This notice affects Electronic Navigational Chart: CA376655, CA476814
(N2020043) LL(377) DFO(6309010-01)

Add yellow and black South cardinal lighted pillar buoy Q(6)+LFI 15s,
marked DHL 49°33'21.9"N 054°19'58.8"W
(See Chart No. 1, Q130.3)
This notice affects Electronic Navigational Chart: CA476813
(N2020052) LL(372.9) DFO(6309019-01)

Add yellow cautionary lighted pillar buoy FI Y, marked DHJ 49°33'20.8"N 054°24'50.2"W
(See Chart No. 1, Qm)
This notice affects Electronic Navigational Chart: CA476813
(N2020053) LL(372.4) DFO(6309020-01)

4885 - Port Harmon - New Edition - 08-MAR-2002 - NAD 1983
31-JUL-2020

LNM/D. 01-MAY-2020

Reposition red starboard hand lighted spar buoy FI R, marked XS10 from 48°31'34.0"N 058°31'32.9"W
(See Chart No. 1, Qf) to 48°31'34.3"N 058°31'34.7"W
This notice affects Electronic Navigational Chart: CA576088
(N2020060) LL(180.61) DFO(6309027-01)

4913 - Caraquet Harbour, Baie de Shippegan and / et Miscou Harbour - New Chart - 07-AUG-1992 - NAD 1983
03-JUL-2020

LNM/D. 12-JUN-2020

Amend leading line usable portion (solid line) to leading line unusable portion between 47°50'14.5"N 064°47'42.4"W
(dashed line) and 47°49'35.7"N 064°48'43.1"W
(See Chart No. 1, M1)
This notice affects Electronic Navigational Chart: CA476275
(G2019120) LL(1310) DFO(6308872-01)

MONTHLY NOTICES TO MARINERS
EASTERN EDITION 07/2020
SECTION 2 – CHART CORRECTIONS

17-JUL-2020 LNM/D. 03-JUL-2020
 Add red starboard hand lighted spar buoy FI R, marked EM12 47°49'12.9"N 064°50'01.5"W
 (See Chart No. 1, Qf)
 This notice affects Electronic Navigational Chart: CA476275
(G2020124) LL(1310.5) DFO(6309097-01)

4921 - Carleton - New Edition - 02-DEC-2016 - NAD 1983

17-JUL-2020 LNM/D. 13-MAR-2020
 Affix patch 48°06'03.0"N 066°07'51.0"W
 Download Patch - ftp://ftp.dfo-mpo.gc.ca/patches/4921_6410330_1_202006170950.pdf
 This notice affects Electronic Navigational Chart: CA579060
DFO(6410330-01)

4921 - Sainte-Thérèse-de-Gaspé - New Edition - 02-DEC-2016 - NAD 1983

17-JUL-2020 LNM/D. 13-MAR-2020
 Affix patch 48°24'55.0"N 064°23'35.0"W
 Download Patch - ftp://ftp.dfo-mpo.gc.ca/patches/4921_6410358_1_202006170827.pdf
 This notice affects Electronic Navigational Chart: CA579064
DFO(6410358-01)

5024 - Nunaksaluk Island to / à Cape Kiglapait - New Chart - 27-JAN-2006 - NAD 1983

10-JUL-2020 LNM/D. 08-MAY-2015
 Amend FI 3s8m6M to read FI 4s8m7M against light 55°57'29.0"N 060°24'43.0"W
 (See Chart No. 1, P16)
 This notice affects Electronic Navigational Chart: CA276652, CA376368
(N2020042) LL(323.3) DFO(6309009-01)

5048 - Cape Harrigan to / aux Kidlit Islands - New Edition - 25-DEC-2015 - NAD 1983

10-JUL-2020 LNM/D. 01-MAR-2019
 Amend FI 3s8m7M to read FI 4s8m7M against light 55°57'28.7"N 060°24'43.5"W
 (See Chart No. 1, P16)
 This notice affects Electronic Navigational Chart: CA276652, CA376368
(N2020042) LL(323.3) DFO(6309009-01)

5348 - Approches à/Approaches to Hopes Advance Bay - New Edition - 05-NOV-1976 - Unknown

24-JUL-2020 LNM/D. 08-APR-1983
 Delete depth of 12 fathoms 59°21'22.9"N 069°32'00.9"W
 (See Chart No. 1, I10) *DFO(6604642-01)*
 Add depth of 8 fathoms 5 feet 59°21'21.3"N 069°32'01.2"W
 (See Chart No. 1, I10) *DFO(6604642-02)*
 Add depth of 14 fathoms 59°20'32.8"N 069°34'23.8"W
 (See Chart No. 1, I10) *DFO(6604642-04)*
 Add depth of 10 fathoms 2 feet 59°24'33.0"N 069°03'43.6"W
 (See Chart No. 1, I10) *DFO(6604642-05)*

MONTHLY NOTICES TO MARINERS
EASTERN EDITION 07/2020
SECTION 2 – CHART CORRECTIONS

8047 - Cod Island to / à Cape Harrison - New Edition - 23-MAY-2003 - Unknown
10-JUL-2020

LNMD. 17-NOV-2017

Amend

Fl 3s 8m to read Fl 4s8m against light
(See Chart No. 1, P16)

55°57'17.1"N 060°23'32.8"W

This notice affects Electronic Navigational Chart: CA276652, CA376368

(N2020042) LL(323.3) DFO(6309009-01)

*711 RADIO AIDS TO MARINE NAVIGATION 2020 (ATLANTIC, ST. LAWRENCE, GREAT LAKES, LAKE WINNIPEG, ARCTIC AND PACIFIC)

Page 1-12

AMEND AS FOLLOWS:

1.7 REGIONAL OFFICE ADDRESSES

Atlantic Region

Service available in English and in French.

Regional Superintendent
Marine Communications and Traffic Services
Canadian Coast Guard
P.O. Box 1000
Dartmouth, NS B2Y 3Z8
Telephone: 902-426-4564

Arctic Region

Service available in English.

Regional Superintendent
Marine Communications and Traffic Services
Canadian Coast Guard
301-5204 50th Avenue
Yellowknife, NT X1A 1E2
Telephone: 519-330-6547

Central ~~and Arctic~~ Region

Service available in English and in French.

Regional Superintendent
Marine Communications and Traffic Services
Canadian Coast Guard
1550 Avenue D'Estimauville
Québec, QC G1J 5E9
Telephone: 418-648-5522
Facsimile: 418-648-4877

Page 1-13

AMEND AS FOLLOWS:

**Central and Arctic Region
Iqaluit MCTS Centre**

“A” and “H” Series NAVWARNs
*Operational from approximately mid-May until late December.
Service available in English and in French.*

Canadian Coast Guard
P.O. Box 189
Iqaluit, NU X0A 0H0

“A” Series NAVWARNs
Telephone: 867-979-5269

“H” Series NAVWARNs
Telephone: 867-979-0310

Facsimile: 867-979-4264

Email: NAVWARN.MCTS@innav.gc.ca
NAVWARN website: <http://nis.ccg-gcc.gc.ca/>

Page 1-14

AMEND AS FOLLOWS:

**Central and Arctic Region
Prescott MCTS Centre**

“Q” and “C” Series NAVWARNs
Service available in English and in French.

Canadian Coast Guard
401 King Street West
P.O. Box 1000
Prescott, ON K0E 1T0

Telephone: 613-925-0666
Facsimile: 613-925-4519

Email: NAVWARN.MCTSPrescott@innav.gc.ca
NAVWARN website: <http://nis.ccg-gcc.gc.ca/>

MONTHLY NOTICES TO MARINERS
EASTERN EDITION 07/2020

SECTION 3 – RADIO AIDS TO MARINE NAVIGATION CORRECTIONS

Pages 2-6 to 2-7

AMEND AS FOLLOWS:

Table 2-3 - Iqaluit MCTS/VFF - Ship/Shore Communications

Sites located at	Channels	Frequencies		Remarks
		Transmit	Receive	
Iqaluit 63°43'52"N 068°32'32"W	Ch16 Ch26	-	-	This site is operational approximately mid- June May to late-December.
	403 603 812 1201	2182J3E	2182	
		2582J3E	2206	
		4363J3E	4071	
		6507J3E	6206	
		8752J3E	8228	
-	13077J3E	12230		
	4207.5F1B	4207.5		
	6312.0F1B	6312.0		
	8414.5F1B	8414.5		
-	12577.0F1B	12577.0		
	16804.5F1B	16804.5		
	4177.5F1B	4177.5		
	6268F1B	6268		
-	8376.5F1B	8376.5		
	12520F1B	12520		
	16695F1B	16695		
	4125J3E	4125		
Churchill 58°46'29"N 094°11'22"W	Ch16 Ch26	-	-	This site is operational only during navigation season. approximately mid-July 4 to late-October 31, approximately.
		2182J3E	2182	
		2514J3E	2118	
		2582J3E	2206	
		4363J3E	4071	
		403		
Killinek 60°25'27"N 064°50'30"W	403	2182J3E	2182	This site is operational approximately early July to late-December.
		2514J3E	2118	
		2582J3E	2206	
		4363J3E	4071	
		6507J3E	6206	
		8752J3E	8228	
Coral Harbour 64°09'01"N 083°22'22"W	403 603 812 1201	2182J3E	2182	This site is operational approximately early mid- July to late-October.
		2514J3E	2118	
		2582J3E	2206	
		4363J3E	4071	
		6507J3E	6206	
		8752J3E	8228	
	13077J3E	12230		

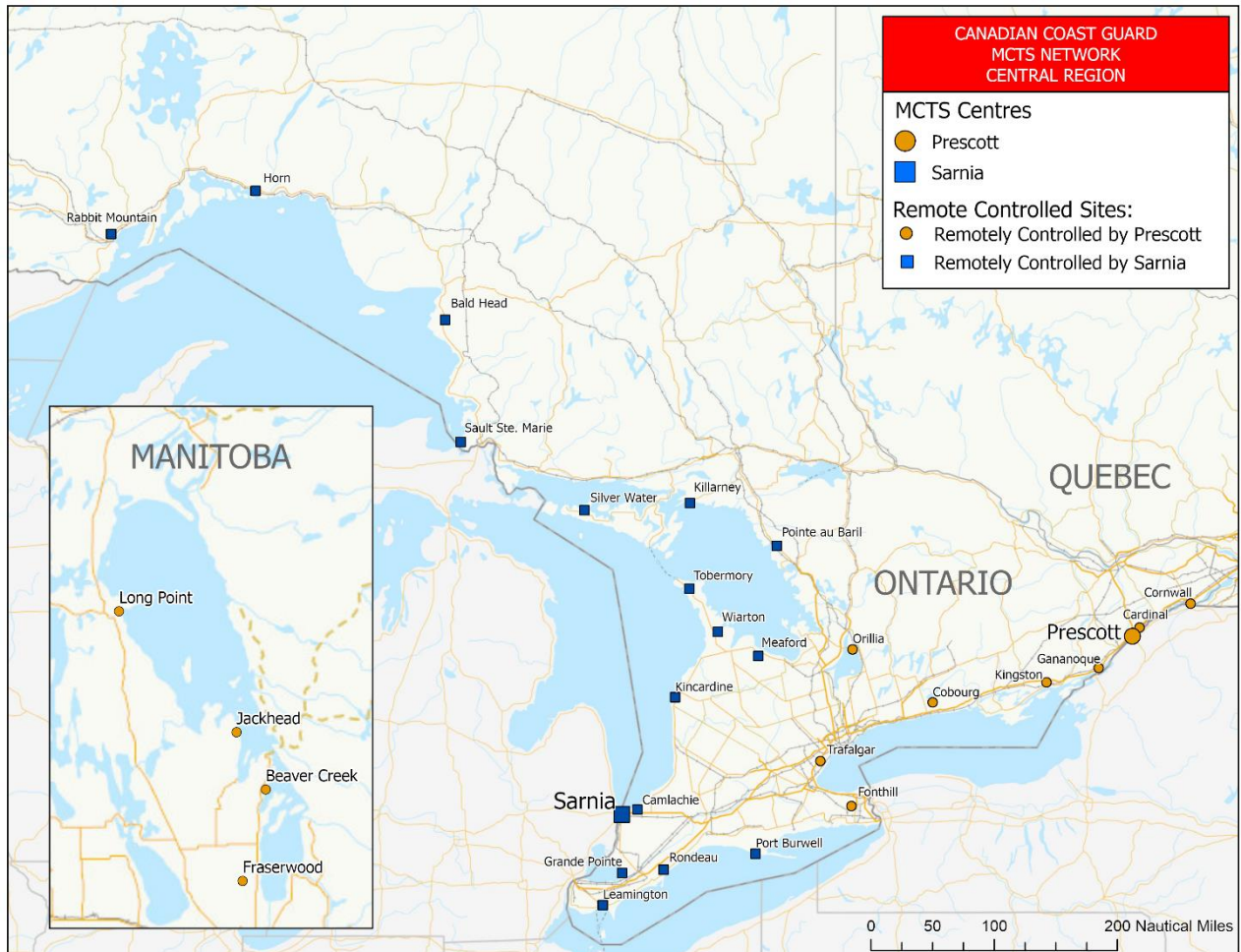
Page 2-56

DELETE THE FOLLOWING FIGURE:

Figure 2-1 - MCTS Network – Central and Arctic Region – Great Lakes

REPLACE WITH THE FOLLOWING:

Figure 2-1 - MCTS Network – Central Region – Great Lakes



Page 2-57

DELETE THE FOLLOWING FIGURE:

Figure 2-2 - MCTS Network – Central and Arctic Region – Gulf and St. Lawrence River

REPLACE WITH THE FOLLOWING:

Figure 2-2 - MCTS Network – Central Region – Gulf and St. Lawrence River



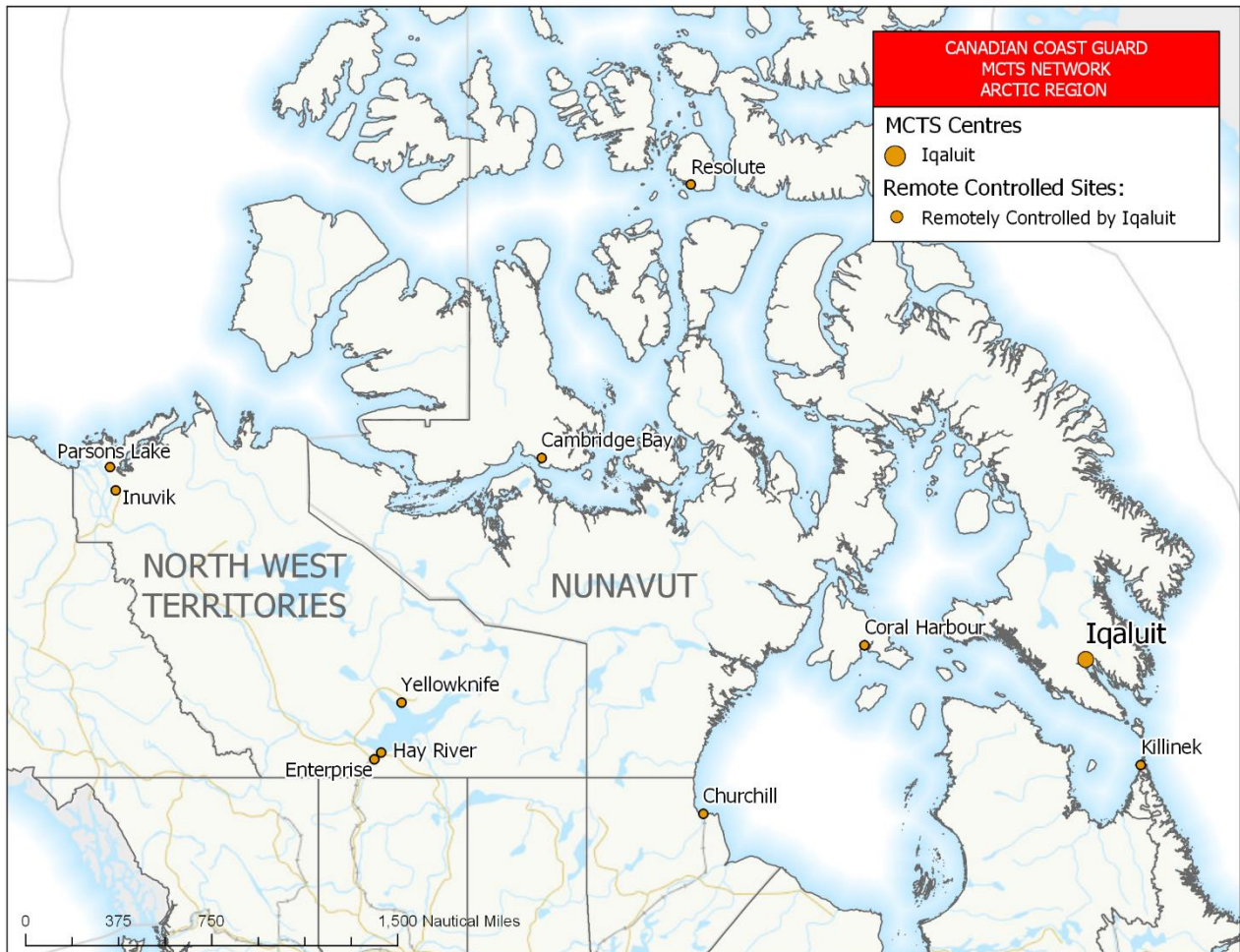
Page 2-58

DELETE THE FOLLOWING FIGURE:

Figure 2-3 - MCTS Network – Central and Arctic Region – Arctic

REPLACE WITH THE FOLLOWING:

Figure 2-3 - MCTS Network – Arctic Region



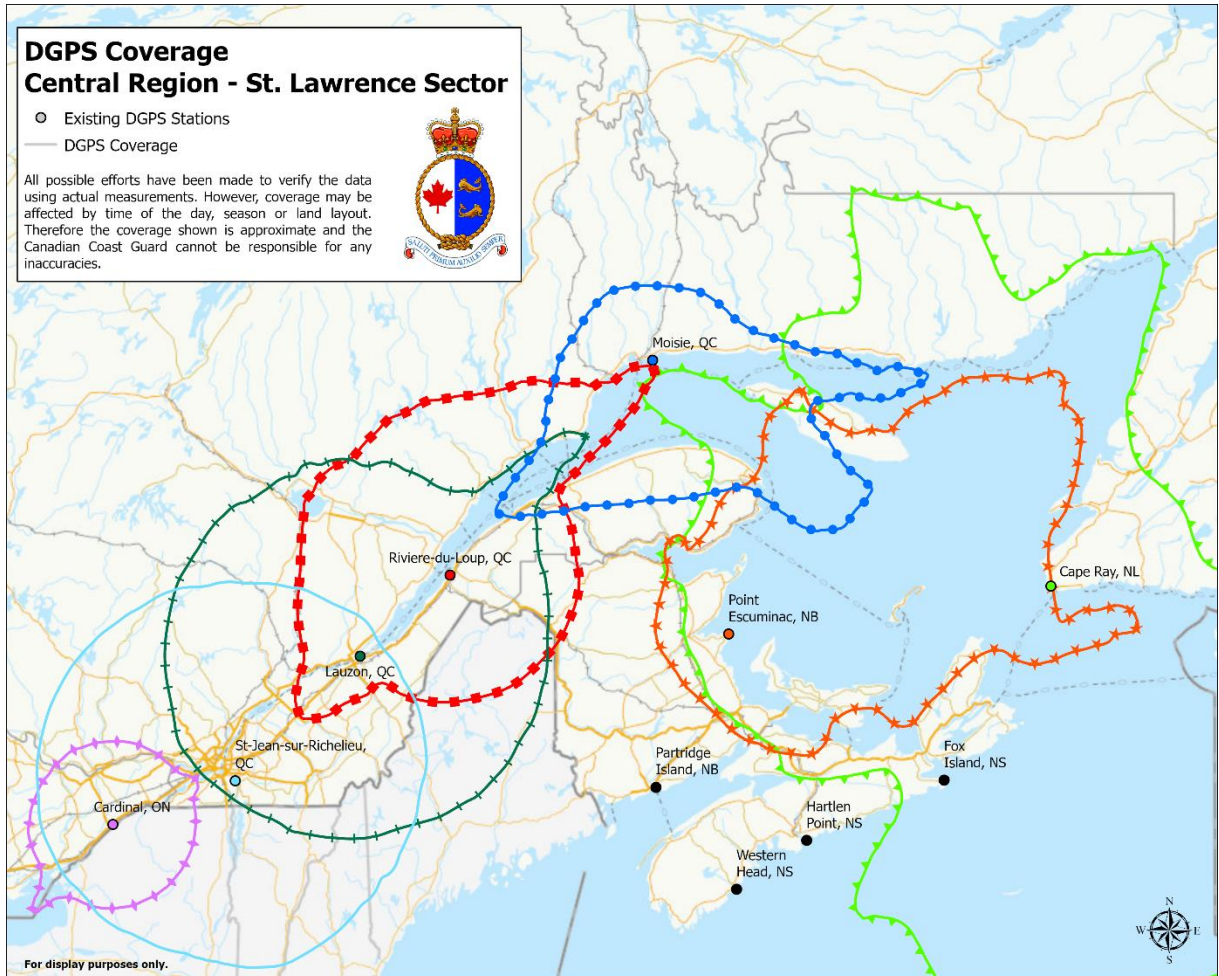
Page 4-41

DELETE THE FOLLOWING FIGURE:

Figure 4-8 - DGPS Coverage – Central and Arctic Region - St. Lawrence Sector

REPLACE WITH THE FOLLOWING:

Figure 4-8 - DGPS Coverage – Central Region – St. Lawrence Sector



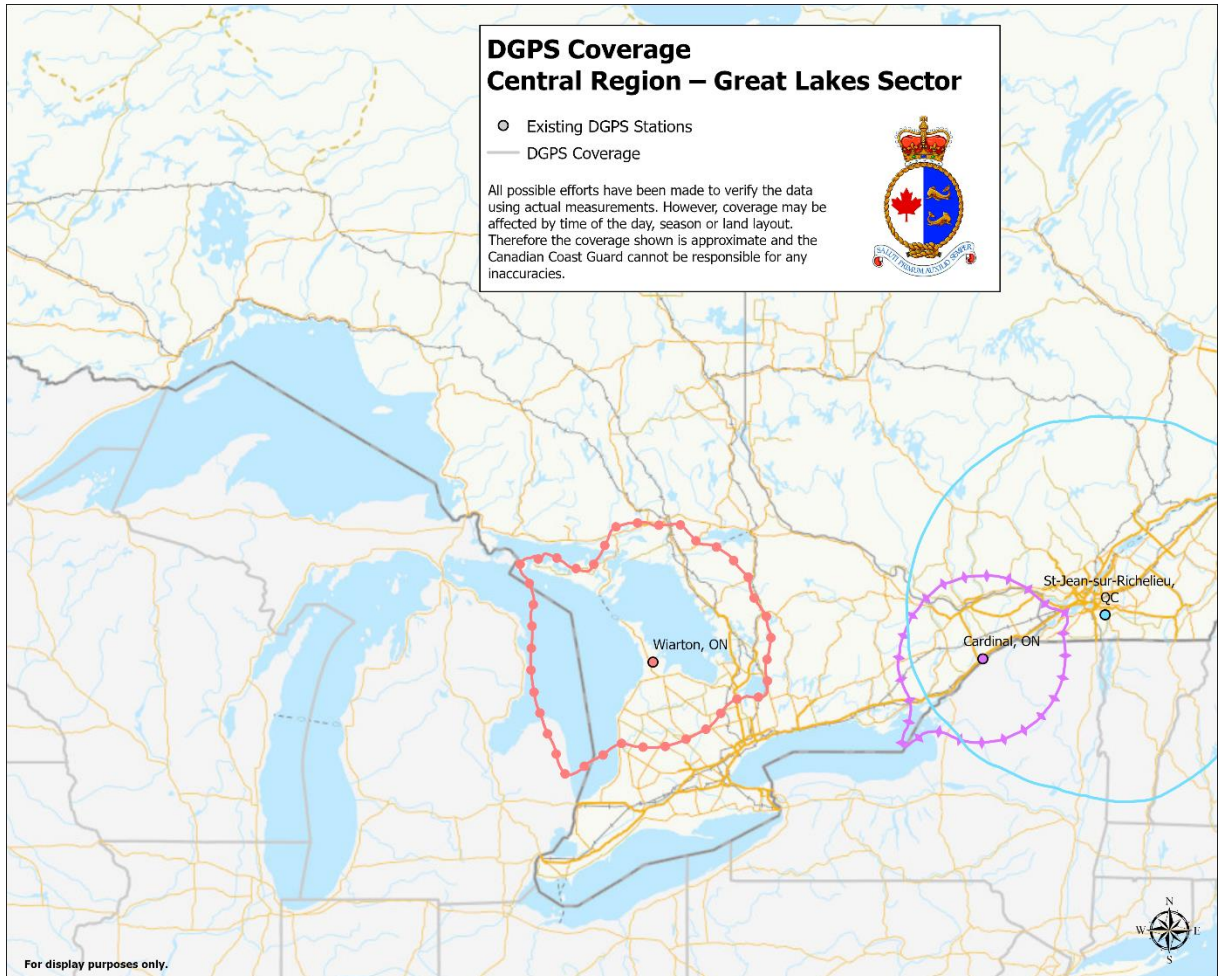
Page 4-42

DELETE THE FOLLOWING FIGURE:

Figure 4-9 - DGPS Coverage - Central and Arctic Region – Great Lakes Sector

REPLACE WITH THE FOLLOWING:

Figure 4-9 - DGPS Coverage - Central Region – Great Lakes Sector



Page 4-47

DELETE THE FOLLOWING TABLE:

Table 4-16 - Distribution of Navigational Warnings

REPLACE WITH THE FOLLOWING:

Table 4-16 - Distribution of Navigational Warnings

Designator	NAVWARN Issuing Desk	Subscription Service	Internet CCG Navigational Warnings (NAVWARN)
A and H	Arctic Region	X	http://nis.ccg-gcc.gc.ca
C	Central Region, Great Lakes Sector	X	
Q	Central Region, St. Lawrence Sector	X	
M	Maritimes Region	X	
N	Newfoundland and Labrador Region	X	
P	Western Region	X	

Page 4-78

AMEND AS FOLLOWS:

2. To inform a quarantine officer, the person in charge of a vessel shall provide a **Maritime Declaration of Health** by email at phac.cns-snc.aspc@canada.ca. If this method not be available, a person in charge of a vessel shall provide the following information to the nearest MCTS Centre:
 - a) the name and nationality of the vessel;
 - b) the ports called at during the vessel voyage;
 - c) the nature of the cargo on board the vessel;
 - d) the number of persons comprising the crew of the vessel;
 - e) the number of passengers on board the vessel;
 - f) the port of destination of the vessel and the name of the vessel's owner or, if the owner is not in Canada, the name of the vessel's agent in Canada;
 - g) the condition of all persons on board the vessel and details of any death or illness occurring during the voyage;
 - h) whether the body of any person is being carried on the vessel;
 - i) the estimated time of arrival of the vessel at the port of destination; and,
 - j) the date and place of issuance of any de-ratting certificate or de-ratting exemption certificate applicable to the vessel.
3. Notification is requested 48 hours or greater prior to arrival. Should there be any change in the situation being reported, an updated report must be sent.
4. All **Maritime Declarations of Health** (new or updated) submitted 24 hours or less prior to arrival, must be accompanied by a call to the CNS at 1-833-615-2384.

Page 4-80

DELETE THE FOLLOWING SECTION:

Ice Central and Arctic

REPLACE WITH THE FOLLOWING:

Ice Central

Canadian Coast Guard Ice Operations Centre
105 McGill Street, 5th floor
Montreal, QC H2Y 2E7

Arctic Sector

Telephone: 514-283-2784

Email: DFO.IceOpsArctic.GlacesOpsArctique.MPO@dfo-mpo.gc.ca

Ice conditions

Telephone: 514-283-1752
514-283-2069

Email: ec.ssgarctique-issarctic.ec@canada.ca
DFO.IceArctic.GlacesArctique.MPO@dfo-mpo.gc.ca

Great Lakes Sector

Telephone: 514-283-2784

Email: DFO.IceOpsGreatLakes.GlacesOpsGrandsLacs.MPO@dfo-mpo.gc.ca

Ice conditions

Telephone: 514-283-1752
514-283-2069

Email: ec.ssggrandslacs-issgreatlakes.ec@canada.ca
DFO.IceGreatLakes.GlcesGrandsLacs.MPO@dfo-mpo.gc.ca

St. Lawrence Sector

Telephone: 514-283-1746

Email: DFO.IceOpsStLawrence.GlacesOpsStLaurent.MPO@dfo-mpo.gc.ca

Ice conditions

Telephone: 514-283-1752
514-283-2069

Email: ec.ssgstlaurent-issstlawrence.ec@canada.ca

The complete version of JIG TP 15163 B (2011) is available at:
<http://www.tc.gc.ca/eng/marinesafety/tp-tp15163-menu-4025.htm>.

Page 4-84

AMEND AS FOLLOWS:

CCG Central and Arctic Region (Ontario)

Telephone: 613-925-4842

Email: TSCCNA@df-mpo.gc.ca

- *In the subject of the email, please state: **SRI – "Ship's Name"***
- *In the body of the email, please include any contact information for the vessel.*

CCG Central and Arctic Region (Québec)

Fisheries and Oceans Canada

Telephone: 514-283-5684

Email: spvr.email@stericycle.com

SECTION 4 – SAILING DIRECTIONS AND SMALL CRAFT GUIDE CORRECTIONS

ARC 404 — Great Slave Lake and Mackenzie River, First Edition, 2012 —

Chapter 1 — Paragraph 50, after “in Moraine Bay.”

Delete: “The barge is marked with hazard buoys.”

(C2020-012.01)

ATL 108 — Gulf of St. Lawrence (Southwest Portion), First Edition, 2006 —

Chapter 4 — Paragraph 20, last line

Add: Fairway light **buoy** ME (1173.91) is moored 3.2 miles ENE
of the front light of the range.

(A2020-008.9)

ATL 109 — Gulf of St. Lawrence (Northeast Portion), First Edition, 2006 —

Chapter 4 — In the vicinity of paragraph 77

Replace the **CORNER BROOK** diagram with the new one provided in **Section 4** of this Monthly Edition.

<https://www.notmar.gc.ca/publications/monthly-mensuel/images/ed072020-part4-atl109-corner-brook.pdf>

(N2020-05.5)

Chapter 4 — Paragraph 155

Delete: “gary.rideout@portharmonauthority.com”

Replace by: dale@portofstephenville.ca

(N2020-05.6)

ATL 112 — St. Lawrence River — Cap-Rouge to Montreal and Richelieu River, Third Edition, 2009 —

Chapter 2 — In the vicinity of paragraph 138, **Table 2.3 Contrecoeur Terminal Wharves**

Make the following change in the “**Depth ***” column:

Berth	Depth *
	metres
2	5.8

(Q2020-030.1)

CEN 302 — Lake Ontario, First Edition, 1996 —

Chapter 2 — Paragraph 31, after “a least depth of 2 feet [0.6 m]”

Insert: “, and marked by a buoy,”

(C2020-009.1)

Chapter 2 — Paragraph 37, after “**Stony Point**”

Delete: “(43°52.8'N., 76°15.6'W.)”

Replace by: (43°51'03"N., 76°16'18"W.)

(C2020-009.2)

Chapter 2 — Paragraph 37, after “**Stony Point Light**”

Delete: “(43°50.3'N., 76°17.9'W.)”

Replace by: (43°50'20"N., 76°17'56"W.)

(C2020-009.3)

SECTION 4 – SAILING DIRECTIONS AND SMALL CRAFT GUIDE CORRECTIONS

Chapter 2 — Paragraph 53, after “marked by a light.”

Insert: *The passage between Charity and East Charity Shoals is rendered unsafe by South Charity Shoal, a narrow ridge about 0.9 [0.8] mile SW of East Charity Shoal Light, having a least depth of 11 feet [3.4 m]. The SW extremity of South Charity Shoal is marked by a lighted buoy. About 3.7 [3.2] miles SSW of South Charity Shoal, a detached 25-foot [7.6-m] shoal is marked by a lighted buoy. An unmarked shoal with a least depth of 24 feet [7.3 m] is about 5.5 [4.8] miles SW of South Charity Shoal.*

(C2020-009.4)

CEN 303 — Welland Canal and Lake Erie, First Edition, 1996 —

Chapter 2 — Before paragraph 1

Delete: “*Charts 14822, 14832, 14833*”

Replace by: *ENCs US4NY32M, US5NY34M, US5NY35M, Charts 14822, 14832, 14833*

(C2020-010.1)

Chapter 2 — Before paragraph 4

Delete: “*Chart 14832*”

Replace by: *ENC US5NY34M, Chart 14832*

(C2020-010.2)

Chapter 2 — After paragraph 13

Delete: “*Chart 14833*”

Replace by: *ENC US5NY35M, Chart 14833*

(C2020-010.3)

Chapter 2 — Before paragraph 35

Delete: “*Chart 14832*”

Replace by: *ENC US5NY34M, Chart 14832*

(C2020-010.4)

Chapter 2 — Paragraph 78

Delete: “*Several small-craft facilities are on **Scajaquada Creek**, which enters the canal about 0.5 [0.4] mile SE of the lock. Transient berths, gasoline, water, electricity, marine supplies, a launching ramp, a 4-ton [3.6-tonne] mobile crane, and hull and gasoline engine repairs are available. In 1977, 4 feet [1.2 m] was reported available in the approach and alongside the berths.*”

(C2020-010.5)

Chapter 2 — Paragraph 84

Delete: “*(For a complete description of the port facilities, refer to Port Series No. 41, published and sold by the U.S. Army Corps of Engineers. See Appendix A [of U.S. Coast Pilot 6] for address.)*”

Replace by: *The depths alongside are reported depths; for the latest depths, contact the operators.*

(C2020-010.6)

SECTION 4 – SAILING DIRECTIONS AND SMALL CRAFT GUIDE CORRECTIONS

Chapter 2 — After paragraph 84

Insert: 84.1 **NRG Energy CR Huntley, Station Coal Wharf** (42°58'10"N., 78°55'46"W.): 753 feet [229 m] of berthing space with a depth of 17 feet [5.2 m] alongside and a deck height of 10 feet [3 m]; open storage for 500,000 tons [453,592 t] of coal; receipt of coal for plant consumption; owned and operated by NRG Energy, Inc.

(C2020-010.7)

Chapter 2 — After paragraph 84.1

Insert: 84.2 **Marathon Ashland Petroleum Tonawanda Terminal Wharf** (42°58'39"N., 78°56'22"W.): 1,410 feet [430 m] of berthing space with a depth of 21 feet [6.4 m] alongside and a deck height of 8 feet [2.4 m]; tank storage with a capacity for 110,000 barrels of asphalt; receipt of asphalt by barge; owned and operated by Marathon Ashland Petroleum Co.

(C2020-010.8)

Chapter 2 — After paragraph 84.2

Insert: 84.3 **NOCO Energy Corp. Tonawanda Terminal Wharf** (43°00'03"N., 78°55'45"W.): 400 feet [122 m] of berthing space with a depth of 21 feet [6.4 m] alongside and a deck height of 12 feet [3.7 m]; tank storage with a capacity of 1,066,150 barrels; receipt of petroleum products by barge and tanker; owned and operated by NOCO Energy Corp.

(C2020-010.9)

Chapter 2 — Paragraph 93

Delete: “In 2007, the controlling depth was 12 feet [3.7 m] with lesser depths to 10 feet [3 m] along the edges; the channel is marked by lighted buoys.”

Replace by: *The channel is marked by lighted buoys. (See Notice to Mariners and the latest edition of the chart for controlling depths.)*

(C2020-010.10)

Chapter 2 — Paragraph 94.1

Delete: “2015, the midchannel”

Replace by: 2016, the

(C2020-010.11)

Chapter 2 — Paragraph 101

Delete: “**Charts 14822, 14832, 14833**”

Replace by: **ENCs US4NY32M, US5NY34M, US5NY35M, Charts 14822, 14832, 14833**

(C2020-010.12)

Chapter 2 — Paragraph 103

Delete: “of Bethlehem Steel Corp.”

(C2020-010.13)

SECTION 4 – SAILING DIRECTIONS AND SMALL CRAFT GUIDE CORRECTIONS

Chapter 2 — Paragraph 104

Delete: “A sound signal, which is manually activated by keying the microphone five times on VHF-FM channel 79, is at the light.”

Replace by: A mariner radio-activated sound signal at the light is initiated by keying the microphone five times on VHF-FM channel 83A.

(C2020-010.14)

Chapter 2 — Paragraph 133

Delete: “**Chart 14822**”

Replace by: **ENC US4NY32M, Chart 14822**

(C2020-010.15)

Chapter 2 — Delete paragraph 134

(C2020-010.16)

Chapter 2 — Delete paragraph 135

Replace by: 135 A **dumping ground** extends lakeward from the west side of Stoney Point with a reported least depth of 6 feet [1.8 m] in 1977.

(C2020-010.17)

Chapter 5 — Paragraph 57

Delete: “**Charts 14830, 14844, 14842**”

Replace by: **ENCs US4MI11M, US5MI11M, US5OH10M, US6OH08M, US6OH1AM, US4OH08M, US5OH08M, Charts 14830, 14844, 14842**

(C2020-010.18)

Chapter 5 — Paragraph 72, last line

Insert: *Passenger ferry service is available to Put-In-Bay. Automobile and passenger ferry service is available to Catawba Island.*

(C2020-010.19)

Chapter 5 — Paragraph 75

Delete: “(41°44.4'N., 83°06.4'W.)”

Replace by: (41°44'21"N., 83°06'21"W.)

(C2020-010.20)

Chapter 5 — Paragraph 76

Delete: “**Charts 14830, 14844, 14842, 14846**”

Replace by: **ENCs US4MI11M, US5MI11M, US5OH10M, US6OH08M, US6OH1AM, US4OH08M, US5OH08M, US6MI07M, US6OH07M, US5MI07M, US5OH07M, US5OH1BM, Charts 14830, 14844, 14842, 14846**

(C2020-010.21)

Chapter 5 — Paragraph 76, before “**Catawba Island and Locust Point**”

Delete: “*Between*”

Replace by: **Perry Cove, between**

(C2020-010.22)

SECTION 4 – SAILING DIRECTIONS AND SMALL CRAFT GUIDE CORRECTIONS

Chapter 5 — Paragraph 77

Delete: “*Charts 14830, 14846, 14847*”

Replace by: *ENCs US4MI11M, US5MI11M, US6MI07M,
US6OH07M, US5MI07M, US5OH07M, US5OH1BM,
US5OH31M, Charts 14830, 14846, 14847*

(C2020-010.23)

Chapter 5 — Paragraph 81

Delete: “*237.4*”

Replace by: *237.6*

(C2020-010.24)

INDEX — After “Peelee Passage, C5/P4”

Insert: Perry Cove, C5/P76

(C2020-010.26)

INDEX — After “Sandusk Creek, C3/P105”

Delete: “Scajaquada Creek, C2/P78”

(C2020-010.25)

CEN 305 — Lake Huron, St. Marys River, Lake Superior, First Edition, 2000 —

Chapter 2 — Before paragraph 151

Delete: “*Chart 14882*”

Replace by: *ENC US5MI61M, Chart 14882*

(C2020-011.01)

Chapter 3 — Before paragraph 1

Delete: “*Charts 14882, 14883, 14884*”

Replace by: *ENCs US5MI61M, US5MI62M, US5MI63M, Charts 14882,
14883, 14884*

(C2020-011.02)

Chapter 3 — Paragraph 35

Delete: “*Chart 14882*”

Replace by: *ENC US5MI61M, Chart 14882*

(C2020-011.03)

Chapter 3 — Paragraph 52

Delete: “*Charts 14882, 14883*”

Replace by: *ENCs US5MI61M, US5MI62M, Charts 14882, 14883*

(C2020-011.04)

Chapter 3 — Paragraph 53

Delete: “*Chart 14883*”

Replace by: *ENCs US5MI62M, US5MI50M, Chart 14883, 14887*

(C2020-011.05)

Chapter 3 — Before paragraph 55

Delete: “*Chart 14883*”

Replace by: *ENC US5MI62M, Chart 14883*

(C2020-011.06)

SECTION 4 – SAILING DIRECTIONS AND SMALL CRAFT GUIDE CORRECTIONS

- Chapter 3 — Paragraph 80
Delete: “**Charts 14883, 14884**”
Replace by: *ENCs US5MI62M, US5MI63M, Charts 14883, 14884* (C2020-011.07)
- Chapter 3 — Paragraph 85
Delete: “**Chart 14884**”
Replace by: *ENC US5MI63M, Chart 14884* (C2020-011.08)
- Chapter 3 — Before paragraph 96
Delete: “**Chart 14884**”
Replace by: *ENC US5MI63M, Chart 14884* (C2020-011.09)
- Chapter 4 — Before paragraph 8
Delete: “**Charts 14884, 14962**”
Replace by: *ENCs US4MI77M, US5MI77M, US5MI63M, Charts 14962, 14884* (C2020-011.10)
- Chapter 4 — Paragraph 13
Delete: “**Chart 14962**”
Replace by: *ENCs US4MI77M, US5MI77M, Chart 14962* (C2020-011.11)
- Chapter 4 — Before paragraph 23
Delete: “**Charts 14884, 14962**”
Replace by: *ENCs US4MI77M, US5MI77M, US5MI63M, Charts 14962, 14884* (C2020-011.12)
- Chapter 4 — Before paragraph 28
Delete: “**Chart 14962**”
Replace by: *ENCs US4MI77M, US5MI77M, Chart 14962* (C2020-011.13)
- Chapter 4 — After paragraph 36
Delete: “**Charts 14884, 14962**”
Replace by: *ENCs US4MI77M, US5MI77M, US5MI63M, Charts 14962, 14884* (C2020-011.14)
- Chapter 4 — After paragraph 40
Delete: “**Chart 14962**”
Replace by: *ENCs US4MI77M, US5MI77M, Chart 14962* (C2020-011.15)
- Chapter 4 — After paragraph 45
Delete: “**Chart 14962**”
Replace by: *ENCs US4MI77M, US5MI77M, Chart 14962* (C2020-011.16)

SECTION 4 – SAILING DIRECTIONS AND SMALL CRAFT GUIDE CORRECTIONS

Chapter 7 — Before paragraph 122

Delete: “*Charts 14968, 14976*”

Replace by: *ENCs US4MN22M, US5MI78M, Charts 14968, 14976*

(C2020-011.17)

Chapter 7 — Paragraph 122

Delete : “*Charts 14968, 14976*”

Replace by: *ENCs US4MN22M, US5MI78M, Charts 14968, 14976*

(C2020-011.18)

MONTHLY NOTICES TO MARINERS
EASTERN EDITION 07/2020

SECTION 5 – LIST OF LIGHTS, BUOYS AND FOG SIGNALS CORRECTIONS

The amendments are highlighted and deletions are crossed out. For general and region-specific information on the List of Lights, click on the following links: [Newfoundland and Labrador Coast](#), [Atlantic Coast](#), [Inland Waters](#) and [Pacific Coast](#).

No.	Name	Position ----- Latitude N. Longitude W.	Light Characteristics	Focal Height in m. above water	Nomi- nal Range	Description ----- Height in meters above ground	Remarks ----- Fog Signals
-----	------	--	--------------------------	--	-----------------------	--	---------------------------------

NEWFOUNDLAND AND LABRADOR COAST

FORTUNE BAY (LL 100 – 120.1)

113 H0314	Ragged Point Light (Bay L'Argent)	Bay L'Argent. 47 33 28.0 054 52 34.0	FI W 4s	62.2	9	Square skeleton tower, red and white rectangular daymark. 3.8	Flash 1 s; eclipse 3 s. Year round. Chart:4831 Edn 07/20 (N20-038)
-------------------------	--------------------------------------	--	---------	------	---	--	---

WEST COAST (LL 173 – 208.2)

180.61	Port Harmon East Turning Basin light buoy XS10	48 31 34.3 058 31 34.7	FI R 4s	Red spar, marked "XS10".	Year round. Chart:4885 Edn 07/20 (N20-060)
193.4	Lark Harbour Entrance light buoy XL1	Bay of Islands. 49 06 23.2 058 20 36.1	Q G 1s	Green spar, marked "XL1".	Seasonal. Chart:4654 Edn 07/20 (N20-061)

STRAIT OF BELLE ISLE (LL 211 – 234)

233.17	Cooks Harbour Outer light buoy XC6	51 36 23.5 055 50 58.5	Q R 1s	Red spar, marked "XC6".	Seasonal. Chart:N/A Edn 07/20 (N20-055)
233.18	Cooks Harbour Outer light buoy XC4	51 36 30.1 055 50 41.1	FI R 4s	Red spar, marked "XC4".	Seasonal. Chart:N/A Edn 07/20 (N20-056)

WHITE BAY (LL 235 – 269.3)

235.31	Broize Point light buoy KQ3	Griquet Harbour entrance. 51 32 29.4 055 26 42.2	FI G 4s	Green spar, marked "KQ3".	Seasonal. Chart:4020 Edn 07/20 (N20-066)
--------	--------------------------------	---	---------	-------	-------	---------------------------	--

NEWFOUNDLAND AND LABRADOR COAST (LL 269.99 – 325.23)

270 H0108	Henley Harbour Light (Chateau Point)	Entrance of harbour. 51 58 19.9 055 51 11.3	FI W 6s	20.0	6	Square skeleton tower, red and white rectangular daymark. 4.3	Flash 0.5 s; eclipse 5.5 s. Seasonal. Chart:5030 Edn 07/20 (N20-037)
320 H0069	White Bear Island Light (Nanuaktok) Racon -. (N) X & S Bands	On island. 55 26 00.7 059 30 40.9	FI W 6s	23.5	5	Square skeleton tower, red and white rectangular daymark. 7.6	Flash 0.5 s; eclipse 5.5 s. Seasonal. Chart:5046 Edn 07/20 (N20-039)
323.3 H0062.5	4 Meter Islet Light	55 57 28.7 060 24 43.5	FI W 3s	7.6	7	Square skeleton tower, red and white rectangular daymark. 4.1	Flash 0.5 s; eclipse 2.5 s. Seasonal. Chart:5048 Edn 07/20 (N20-042, 086)

MONTHLY NOTICES TO MARINERS
EASTERN EDITION 07/2020

SECTION 5 – LIST OF LIGHTS, BUOYS AND FOG SIGNALS CORRECTIONS

No.	Name	Position ----- Latitude N. Longitude W.	Light Characteristics	Focal Height in m. above water	Nomi- nal Range	Description ----- Height in meters above ground	Remarks ----- Fog Signals
NOTRE DAME BAY (LL 326 – 346.4, 354 – 395)							
331.9	Black Rock Sunker light buoy DLB2	49 38 11.5 055 45 55.6	Fl R 4s	Red spar, marked "DLB2".	Seasonal. Chart:4592 Edn 07/20 (N20-058)
334 H0677.6	Lushes Bight Light	On-shore. 49 35 18.2 055 43 19.3	Fl W 6s	6.4	5	Square skeleton tower, red and white rectangular daymark. 4.3	Flash 0.5 s; eclipse 5.5 s. Seasonal. Chart:4592 Edn 07/20 (N20-033, 089)
341.495	Moorey Cove Shoal light buoy DR2	49 29 42.8 055 47 06.2	Fl R 4s	Red spar, marked "DR2".	Seasonal. Chart:4593 Edn 07/20 (N20-057)
344 H0670.5	Cottrells Cove Light	On westerly extremity of point. 49 28 56.5 055 18 16.4	Fl W 4s	16.8	5	Square skeleton tower, red and white rectangular daymark, white vertical stripe. 4.6	Seasonal. Chart:4864 Edn 07/20 (N20-032)
369 H0628	Ruth Island Light	E. of Change Island. 49 40 46.3 054 22 50.7	Fl W 3s	10.7	5	Square skeleton tower, red and white rectangular daymark. 4.3	Flash 1 s; eclipse 2 s. Seasonal. Chart:4862 Edn 07/20 (N20-035)
372 H0630	Tickle Point Light	Change Island. 49 40 07.5 054 24 49.0	Fl G 5s	9.4	4	Square skeleton tower, green and white rectangular daymark. 4.3	Flash 1 s; eclipse 4 s. Seasonal. Chart:4862 Edn 07/20 (N20-041)
372.4	John Wheaton Rock cautionary light buoy DHJ	49 33 20.8 054 24 50.2	Fl Y 4s	Yellow, marked "DHJ".	Year round. Chart:4862 Edn 07/20 (N20-053)
372.9	Indian Lookout South Cardinal light buoy DHL	49 33 21.9 054 19 58.8	Q(6)+ LFl W 15s	Yellow and black, marked "DHL".	Year round. Chart:4862 Edn 07/20 (N20-052)
374 H0606	Stag Harbour Run Light	Fogo Island. 49 33 18.9 054 17 46.4	Fl W 4s	6.0	5	Square skeleton tower, red and white rectangular daymark. 4.3	Flash 1 s; eclipse 3 s. Year round. Chart:4530 Edn 07/20 (N20-036)
377 H0632	Smoker Island Light	W. of Change Island. 49 36 41.8 054 27 09.6	Fl W 4s	10.7	Square skeleton tower, red and white rectangular daymark. 5.3	Flash 1 s; eclipse 3 s. Year round. Chart:4862 Edn 07/20 (N20-043)

MONTHLY NOTICES TO MARINERS
EASTERN EDITION 07/2020

SECTION 5 – LIST OF LIGHTS, BUOYS AND FOG SIGNALS CORRECTIONS

No.	Name	Position ----- Latitude N. Longitude W.	Light Characteristics	Focal Height in m. above water	Nomi- nal Range	Description ----- Height in meters above ground	Remarks ----- Fog Signals
-----	------	--	--------------------------	--	-----------------------	--	---------------------------------

ATLANTIC COAST

NOVA SCOTIA, SOUTHEAST COAST (LL 327 – 684.02)

602 <i>H3534</i>	Beaver Island	E. end of island. 44 49 29.2 062 20 16.0	Fl W 7s	19.9	14	White cylindrical tower with red top. 8.6	Year round. Horn – Blast 6 s; sil. 54 s. Omnidirectional.
							Chart:4235 Edn 07/20 (F20-025)

GULF OF ST. LAWRENCE (LL 883.2 – 940.3, 1169.1 – 1426, 1477.5 – 1584)

1171	Miramichi Outer Bar light buoy M4	47 05 55.0 064 56 54.0	Fl R 4s	Red spar, marked "M4".	Seasonal (in place year round).
							Chart:N/A Edn 07/20 (G20-081)

1172.6	The Lump light buoy M8	47 06 34.4 064 58 25.7	Fl R 4s	Red spar, marked "M8".	Seasonal (in place year round).
							Chart:N/A Edn 07/20 (G20-083)

1310 <i>H1580</i>	NE. of Stoke Point. 47 48 30.0 064 50 27.8	F Y	8.1	13	White square tower with red vertical stripe. 8.2	Operates 24 h. Seasonal.	
	Caraquet range						
1311 <i>H1580.1</i>	226°47' 1091.4 m from front.	F Y	20.3	13	Square skeleton tower, white daymark with red vertical stripe. 11.3	Operates 24 h. Seasonal.	
							Chart:4913 Edn 07/20 (G19-120, 121)

1310.5	Caraquet Channel light buoy EM12	47 49 13.5 064 50 01.9	Fl R 4s	Red spar, marked "EM12".	Seasonal (in place year round).
							Chart:4913 Edn 07/20 (G20-124, 143)

1313.2 <i>H1581.5</i>	47 48 09.7 064 53 09.0	F R	8.6	Square skeleton tower, red daymark with white vertical stripe. 5.1	Operates 24 h. Seasonal.	
	Middle Caraquet range						
1313.3 <i>H1581.51</i>	244°07' 355.0 m from front.	F R	19.6	Square skeleton tower, red daymark with white vertical stripe. 14.2	Operates 24 h. Seasonal.	
							Chart:4913 Edn 07/20 (G19-122, 123)

1314.2 <i>H1581.7</i>	47 48 21.4 064 51 34.2	F R	8.1	14	Square skeleton tower, red daymark with white vertical stripe. 3.6	Visible in line of range. Operates 24 h. Seasonal.	
	Stoke Point range						
1314.3 <i>H1581.71</i>	093°46' 124.2 m from front.	F R	12.8	14	Square skeleton tower, red daymark with white vertical stripe. 8.2	Visible in line of range. Operates 24 h. Seasonal.	
							Chart:4920 Edn 07/20 (G19-124, 125)

1500.5	Scientific light buoy AZMP-ESG	46 48 00.0 062 00 00.0	Fl(5) Y 20s	Yellow ODAS, marked "AZMP-ESG".	Seasonal.
							Chart:4023 Edn 07/20 (Q20-123)

MONTHLY NOTICES TO MARINERS
EASTERN EDITION 07/2020

SECTION 5 – LIST OF LIGHTS, BUOYS AND FOG SIGNALS CORRECTIONS

No.	Name	Position ----- Latitude N. Longitude W.	Light Characteristics	Focal Height in m. above water	Nomi- nal Range	Description ----- Height in meters above ground	Remarks ----- Fog Signals
1561.67	Chevery cautionary light buoy CA	Rivière Nétagamiou entrance. 50 27 31.8 059 36 24.0	Fl Y 4s	Yellow, marked "CA".	Seasonal. Chart:4468 Edn 07/20 (Q20-124)
1561.68	Chevery cautionary light buoy CB	Rivière Nétagamiou entrance. 50 27 32.3 059 36 34.6	Fl Y 4s	Yellow, marked "CB".	Seasonal. Chart:4468 Edn 07/20 (Q20-139)
1561.69	Chevery cautionary light buoy CC	Rivière Nétagamiou entrance. 50 27 35.0 059 36 46.1	Fl Y 4s	Yellow, marked "CC".	Seasonal. Chart:4468 Edn 07/20 (Q20-125)

PRINCE EDWARD ISLAND (LL 942 – 1084.7)

1044.4	St. Peters Harbour light buoy JD9	46 26 48.2 062 44 17.6	Fl G 4s	Green, marked "JD9".	Buoy may be repositioned due to shifting channel. Seasonal. Chart:N/A Edn 07/20 (G20-061)
1065.2	Malpeque West cautionary light buoy JPA	46 34 30.7 063 39 09.6	Fl Y 4s	Yellow spar, marked "JPA".	Seasonal. Chart:4491 Edn 07/20 (G20-096)
1065.5	Malpeque West Entrance light buoy JP6						Delete from list. Chart:4491 Edn 07/20 (G20-095)

ST. LAWRENCE RIVER (LL 1584.5 – 1772, 1823.8 – 2185.7, 2273 – 2365.95)

1994	Pointe Platon light buoy Q63	46 40 40.6 071 51 40.2	Fl G 4s	Green spar, marked "Q63".	(Winter spar.) Year round. Chart:1314 Edn 07/20 (Q20-090)
2001	Rapides Richelieu light buoy Q67	NE. of Île Richelieu. 46 39 30.5 071 53 34.0	Fl G 4s	Green spar, marked "Q67".	(Winter spar.) Year round. Chart:1314 Edn 07/20 (Q20-091)
2012	Îlet Mayrand light buoy Q83	Grondines. 46 36 28.3 071 58 30.6	Fl G 4s	Green spar, marked "Q83".	(Winter spar.) Year round. Chart:1314 Edn 07/20 (Q20-092)

INLAND WATERS

ST. LAWRENCE RIVER SEAWAY (LL 0.05 - 401, 1193 – 1204.5)

10	Île Saint-Nicolas light buoy A8	45 24 21.2 073 44 31.1	Fl R 4s	Red spar, marked "A8".	(Winter spar.) Seasonal (in place year round). Chart:1430 Edn 07/20 (Q20-030)
----	------------------------------------	---------------------------	---------	-------	-------	------------------------	--

MONTHLY NOTICES TO MARINERS
EASTERN EDITION 07/2020

SECTION 5 – LIST OF LIGHTS, BUOYS AND FOG SIGNALS CORRECTIONS

No.	Name	Position ----- Latitude N. Longitude W.	Light Characteristics	Focal Height in m. above water	Nomi- nal Range	Description ----- Height in meters above ground	Remarks ----- Fog Signals
12	Île Saint-Bernard light buoy A10	45 24 19.1 073 45 22.4	Fl R 4s	Red spar , marked "A10".	(Winter spar.) Seasonal (in place year round). Chart:1430 Edn 07/20 (Q20-032)
14	Île Saint-Bernard West Cardinal light buoy LACHINA	45 24 17.3 073 46 04.7	Q(9) W 15s	Yellow,black-yellow spar , marked " LACHINA ".	(Winter spar.) Seasonal (in place year round). Chart:1430 Edn 07/20 (Q20-057)
19	Lac Saint-Louis light buoy A25	45 23 10.7 073 48 10.6	Fl G 4s	Green spar , marked "A25".	Seasonal (in place year round). (Winter spar.) Chart:1430 Edn 07/20 (Q20-051)
19.5	Lac Saint-Louis light buoy A24	45 23 15.9 073 48 15.2	Fl R 4s	Red spar , marked "A24".	(Winter spar.) Seasonal (in place year round). Chart:1430 Edn 07/20 (Q20-050)
22	Pointe à Penny light buoy A33	45 22 06.5 073 49 38.1	Fl G 4s	Green spar , marked "A33".	(Winter spar.) Seasonal (in place year round). Chart:1430 Edn 07/20 (Q20-052)
23	Pointe à Penny light buoy A34	45 22 10.8 073 49 43.8	Fl R 4s	Red spar , marked "A34".	(Winter spar.) Seasonal (in place year round). Chart:1430 Edn 07/20 (Q20-053)
23.5	Îles de la Paix light buoy A35	45 21 47.3 073 50 03.2	Fl G 4s	Green spar , marked "A35".	(Winter spar.) Seasonal (in place year round). Chart:1430 Edn 07/20 (Q20-054)
24	Pointe du Moulin light buoy A38	45 21 37.2 073 50 29.6	Q R 1s	Red spar , marked "A38".	(Winter spar.) Seasonal (in place year round). Chart:1430 Edn 07/20 (Q20-055)
25	Îles de la Paix light buoy A39	45 21 22.1 073 50 36.5	Q G 1s	Green spar , marked "A39".	(Winter spar.) Seasonal (in place year round). Chart:1430 Edn 07/20 (Q20-061)
26	Pointe du Moulin light buoy A40	45 21 25.4 073 50 51.5	Q R 1s	Red spar , marked "A40".	(Winter spar.) Seasonal (in place year round). Chart:1430 Edn 07/20 (Q20-059)
27	Îles de la Paix light buoy A45	45 20 57.0 073 51 42.4	Fl G 4s	Green spar , marked "A45".	(Winter spar.) Seasonal (in place year round). Chart:1430 Edn 07/20 (Q20-060)

MONTHLY NOTICES TO MARINERS
EASTERN EDITION 07/2020

SECTION 5 – LIST OF LIGHTS, BUOYS AND FOG SIGNALS CORRECTIONS

No.	Name	Position ----- Latitude N. Longitude W.	Light Characteristics	Focal Height in m. above water	Nomi- nal Range	Description ----- Height in meters above ground	Remarks ----- Fog Signals
29	Îles de la Paix light buoy A51	45 20 29.2 073 52 55.0	Q G 1s	Green spar, marked "A51".	(Winter spar.) Seasonal (in place year round). Chart:1430 Edn 07/20 (Q20-063)
30	Pointe à Péladeau light buoy A52	45 20 35.8 073 53 01.2	Fl R 4s	Red spar, marked "A52".	(Winter spar.) Seasonal (in place year round). Chart:1430 Edn 07/20 (Q20-064)
37 H2530	Powerhouse range	Beauharnois Canal. 45 16 41.8 073 55 57.3	Iso G 2s	9.9	13	White skeleton tower, orange triangular daymark with black vertical stripe. 8.9	Seasonal.
37.1 H2530.1		046°17' 527.2 m from front.	F G	22.8	13	White skeleton tower, orange triangular daymark with black vertical stripe. 20.0	Seasonal. Chart:1431 Edn 07/20 (B20-007, 008)
80.2	Valleyfield Harbour Entrance light buoy DV11	45 14 55.1 074 09 54.8	Fl G 4s	Green spar, marked "DV11".	Operates 24 h. Seasonal. Chart:1431 Edn 07/20 (B20-006)
164 H2578	Cornwall Island range	E. point of island. 45 00 53.6 074 39 52.0	F G	19.4	12	Square skeleton tower, orange triangular daymark with white vertical stripe. 16.1	Visible in line of range. Seasonal.
165 H2578.1		241°05' 604.2 m from front.	F G	33.0	12	White Square skeleton tower, orange triangular daymark with white vertical stripe. 15.5	Visible in line of range. Seasonal. Chart:1433 Edn 07/20 (B20-010, 011)
GEORGIAN BAY (LL 814 – 982)							
866	Port McNicoll range	E. of Elimere Point. 44 45 44.8 079 50 02.2	F G	21.8	17	White Skeleton tower, white rectangular daymark with red vertical stripe. 19.2	Operates 24 h. Seasonal (in place year round).
867		152°37' 785 m from front.	F G	45.6	17	White Square skeleton tower, white square daymark with red vertical stripe. 13.5	Operates 24 h. Seasonal (in place year round). Chart:2241 Edn 07/20 (D18-015, D20-011)

CANADIAN COAST GUARD – MARINE INFORMATION REPORT AND SUGGESTION SHEET

Name of Ship or Sender: Date:

Address of Sender:
Street # Street Name

Town / City: Prov / State: Postal Code / Zip Code:

Tel / Fax / E-mail address of sender:

Observation Date: Time (UTC):

Geographical Position:

Coordinate Position: Lat: Long:

Position Method: DGPS GPS with WAAS GPS Radar Other

Horizontal Datum Used: WGS 84 NAD 27 Other

Estimated Position Accuracy:

Chart #: Datum: NAD 27 NAD 83

Chart Edition: Last Correction applied:

Publications affected (Quote edition and page number):

*Full details (Attach additional sheets as necessary):

Mariners are requested to notify the responsible authorities when new or suspected dangers to navigation are discovered, changes are observed in aids to navigation, or corrections to publications are seen to be necessary.

In the case of new or suspected dangers to navigation, it is important that all details be given in order to aid with future investigations. Items of interest include heights, depths, physical description, type of bottom and equipment method used to position the item. It is helpful to mark details on the chart, which will be promptly replaced by the Canadian Hydrographic Service.

Reports should be made to the nearest Marine Communications and Traffic Services Centre (MCTS) and should be confirmed in writing to:

Leader, Notices to Mariners
Canadian Coast Guard
Department of Fisheries and Oceans
Montreal, QC H2Y 2E7
Notmar.XNCR@dfo-mpo.gc.ca

In the case of information concerning aids to navigation or the
List of Lights, Buoys and Fog Signals book.

OR

Director General, Canadian Hydrographic Service &
Oceanographic Services
Department of Fisheries and Oceans
Ottawa, ON K1A 0E6
CHSINFO@dfo-mpo.gc.ca

In the case of new or suspected dangers to navigation or
where corrections to "Sailing Directions" appear to be
necessary.

For general questions on Canadian Coast Guard programs or services, please send an e-mail to:
info@dfo-mpo.gc.ca