



Fisheries and Oceans
Canada

Pêches et Océans
Canada

Canadian
Coast Guard

Garde côtière
canadienne

NOTICES TO MARINERS PUBLICATION EASTERN EDITION

MONTHLY EDITION N°08
August 28, 2020



Safety First, Service Always

Published Monthly by the
CANADIAN COAST GUARD
www.notmar.gc.ca/subscribe

CONTENTS

| | Page |
|-----------|--|
| Section 1 | General and Safety Information..... 1 - 12 |
| Section 2 | Chart Corrections..... 13 - 29 |
| Section 3 | Radio Aids to Marine Navigation Corrections N/A |
| Section 4 | Sailing Directions and Small Craft Guide Corrections..... 31 |
| Section 5 | List of Lights, Buoys and Fog Signals Corrections..... 32 - 41 |

Notices to Mariners Publication
Eastern Edition
Monthly Edition N°08/2020

Published under the authority of:
Canadian Coast Guard Programs
Aids to Navigation and Waterways
Fisheries and Oceans Canada
Montreal, Quebec
H2Y 2E7

© Her Majesty the Queen in Right of Canada, 2020
Fs152-5E-PDF
ISSN 1719-7678

Available on the Notices to Mariners website:
www.notmar.gc.ca

Disponible en français :
Publication des Avis aux navigateurs
Édition de l'Est
Édition mensuelle N°08/2020

EXPLANATORY NOTES

Geographical positions refer directly to the graduations of the largest scale Canadian Hydrographic Service chart unless otherwise indicated.

Bearings refer to the true compass and are measured clockwise from 000° (North) clockwise to 359°; those relating to lights are from seaward.

Visibility of lights is that in clear weather.

Depths - The units used for soundings (metres, fathoms or feet) are stated in the title of each chart.

Elevations are normally given above Higher High Water, Large Tide unless otherwise indicated.

Distances may be calculated as follows:

1 nautical mile = 1,852 metres (6,076.1 feet)

1 statute mile = 1,609.3 metres (5,280 feet)

1 metre = 3.28 feet

Temporary and Preliminary Notices to Mariners are indicated by a (T) or a (P) in Section 1, respectively. Please note that nautical charts are not amended by the Canadian Hydrographic Service for temporary (T) and preliminary (P) notices. It is recommended that mariners chart these corrections in pencil. For the list of charts affected by (T) & (P) notices, please refer to the index on page ii of the current [Monthly Summary of \(T\) and \(P\) Notices](#) publication.

Please note that, in addition to the temporary and preliminary changes normally advertised as (T) & (P) notices, there are a few permanent changes to aids to navigation that have been advertised as preliminary Notices to Mariners while charts are being updated for new editions.

Marine Information Report & Suggestion Sheet

Mariners are requested to notify the responsible authorities when new or suspected dangers to navigation are discovered, changes observed in aids to navigation or corrections to publications are seen to be necessary. Such communications can be made using the *Marine Information Report & Suggestion Sheet* inserted on the last page of each monthly edition of *Notices to Mariners*.

Canadian Hydrographic Service (CHS) – Information Published in Section 2 of *Notices to Mariners*

Mariners are advised that only the most critical changes that directly affect safety to navigation are issued in Section 2 – Chart Corrections. This limitation is required to ensure that charts remain as clear and easy to read as possible. As a result, mariners may see minor discrepancies of a non-critical nature between information in official publications. For example, a small change in the nominal range or focal height of a light may not result in the production of a chart correction in *Notices to Mariners*, but may result in a correction in the *List of Lights, Buoys and Fog Signals* publication.

In the case of a discrepancy between information provided on CHS charts relating to aids to navigation, and the *List of Lights, Buoys and Fog Signals* publication, the latter shall be deemed as containing the most up-to-date information.

Canadian Nautical Charts & Publications

A source list of Canadian nautical charts and publications is published in Notice No. 14 of the *Notices to Mariners Annual Edition 2020*. The source supply and the prices effective at the time of printing are listed. For current chart edition dates, please refer to the following website: www.chs-shc.gc.ca/charts-cartes/paper-papier/index-eng.asp

CHART CORRECTIONS – SECTION 2

Corrections to nautical charts will be listed in numerical order by chart number. Each chart correction listed applies only to that particular chart. Related charts, if any, will have their own specific correction listed separately.

Users should also refer to CHS *Chart 1: Symbols, Abbreviations and Terms* for additional information pertaining to the correction of charts.

The illustration below describes the elements that will comprise a typical Section 2 chart correction:

| | | | | | |
|------------------------------|--------------|---|--------------------------------|---------------------------|-------------------|
| | Chart Number | Chart Title | Charts latest new edition date | Horizontal Chart Datum | Last Correction |
| Weekly chart correction date | 1202 | Cap Eternité à/to Saint-Fulgence – New Edition – 20-MAY-94 – NAD 1927 | | | |
| | 6-Aug-1999 | | | | LNM/D 23-Jul-1999 |
| | Add | light Fl G | | 48°26'36.4"N 70°53'08.6"W | |
| | | (See Chart No 1 P24) | (F2007-107) LL (700) | DFO(6829264-01) | |
| | Chart action | Chart No 1 reference no. | CCG reference no. | List of light no. | CHS reference no. |

The last correction number is identified with the **LNM/D** or Last Notice to **Mariners** Number / Date.

NOTICES TO MARINERS WEBSITE – MONTHLY EDITIONS, CHART CORRECTIONS, AND CHART PATCHES

The Notices to Mariners website allows users to access the [monthly publications](#), [chart corrections](#), and [chart patches](#).

Users can subscribe for free to the [email notification service](#) to receive notifications when charts of interest are updated, including their patches, as well as when a new monthly edition becomes available online.

In addition, the monthly publication and related files to download, such as chart patches and *Sailing Directions* diagrams, can be obtained all together through the download of a single ZIP file.

ADVISORY NAVIGATIONAL WARNINGS / NOTICES TO SHIPPING

The Canadian Coast Guard is implementing a number of changes to the aids to navigation system in Canada.

These changes are advertised as Navigational Warnings, formerly called Notices to Shipping¹, that are broadcast by the Canadian Coast Guard, and are then followed up with Notices to Mariners, then charts are updated by hand correction, reprints or new editions.

Mariners are advised that all relevant Navigational Warnings (NAVWARNs) should be kept until superseded by Notices to Mariners or through revised charts issued by the Canadian Hydrographic Service (CHS).

Navigational Warnings are accessible on the applicable regional page on the Canadian Coast Guard e-Navigation Maritime Information Portal at <http://www.marinfo.gc.ca/e-nav>.

The Canadian Hydrographic Service is reviewing the impact of these changes with the Canadian Coast Guard and together are preparing an action plan on the issuing of chart revisions.

For further information, contact your regional Navigational Warning (NAVWARN) Issuing Desk.

Atlantic Region

* Port aux Basques MCTS Centre

Canadian Coast Guard
49 Stadium Rd.
P.O. Box 99
Port aux Basques, NL A0M 1C0

Telephone: (709) 695-2168 or 1-800-563-9089
Facsimile: (709) 695-7784

Email: NAVWARN.MCTSPortAuxBasques@innav.gc.ca
Website: <http://www.marinfo.gc.ca/e-nav>

* Sydney MCTS Centre

Canadian Coast Guard
1190 Westmount Road
Sydney, NS B1R 2J6

Telephone: (902) 564-7751 or 1-800-686-8676
Facsimile: (902) 564-7662

Email: NAVWARN.MCTSSydney@innav.gc.ca
Website: <http://www.marinfo.gc.ca/e-nav>

Central Region

* Prescott MCTS Centre

Canadian Coast Guard
401 King Street West
P.O. Box 1000
Prescott, ON K0E 1T0

"C" and "Q" Series
Telephone: (613) 925-0666
Facsimile: (613) 925-4519

Email: NAVWARN.MCTSPrescott@innav.gc.ca
Website: <http://www.marinfo.gc.ca/e-nav>

Arctic Region

* Iqaluit MCTS Centre

Operational from approximately mid-May until late December.

Canadian Coast Guard
P.O. Box 189
Iqaluit, NU X0A 0H0

"A" Series
Telephone: (867) 979-5269

"H" Series
Telephone: (867) 979-0310

Facsimile: (867) 979-4264
Email: NAVWARN.MCTSIqaluit@innav.gc.ca
Website: <http://www.marinfo.gc.ca/e-nav>

* Service available in English and French.

¹ The expression "Notice to Shipping" was changed to "Navigational Warning" in January 2019.

INDEX

| | |
|---|------------|
| SECTION 1 – GENERAL AND SAFETY INFORMATION | 1 |
| Transport Canada – Restricted Speed Area - St. Clair and Detroit Rivers | 1 |
| Canadian Coast Guard Publication – Comments and Suggestions on Notices to Mariners (Notmar) Publications | 1 |
| Canadian Hydrographic Service – Modifications to the 2020 Canadian Tide and Current Tables Volume 1 – Atlantic Coast and Bay of Fundy | 1 |
| Saguenay-St. Lawrence Marine Park and Surrounding Waters – Whale Protection | 1 |
| Transport Canada – COVID-19 Measures, Updates and Guidance | 2 |
| Canadian Hydrographic Service – Modifications to the 2020 Canadian Tide and Current Tables, Volume 2 – Gulf of St. Lawrence | 2 |
| Saguenay–St. Lawrence Marine Park - Beluga Whale Protection: Slowdown Area at the Mouth of the Saguenay Fjord and Area Closure at Baie Sainte-Marguerite..... | 3 |
| Gulf of St. Lawrence – Protection of the North Atlantic Right Whale..... | 5 |
| *801 Canadian Hydrographic Service – Nautical Charts | 10 |
| *802 Canadian Hydrographic Service – Electronic Navigational Charts | 10 |
| *803 Canadian Hydrographic Service – Raster Digital Charts (BSB V3) | 10 |
| *804 Transport Canada – Ship Safety Bulletins #11, #19 and #20/2020 | 11 |
| *805 Lac Saint-Louis – Unlit Buoy Repositioned | 11 |
| *806 Détroit de Northumberland / Northumberland Strait: Partie Ouest / Western Portion: Ports / Harbours – Unlit Buoys Repositioned | 11 |
| *807 Détroit de Northumberland / Northumberland Strait: Partie Ouest / Western Portion: Ports / Harbours – Buoys Changed and Repositioned | 11 |
| *808 Détroit de Northumberland / Northumberland Strait: Partie Ouest / Western Portion: Ports / Harbours – Unlit Buoys Permanently Established | 12 |
| SECTION 2 – CHART CORRECTIONS | 13 |
| SECTION 3 – RADIO AIDS TO MARINE NAVIGATION CORRECTIONS | N/A |
| SECTION 4 – SAILING DIRECTIONS AND SMALL CRAFT GUIDE CORRECTIONS | 31 |
| SECTION 5 – LIST OF LIGHTS, BUOYS AND FOG SIGNALS CORRECTIONS | 32 |

NUMERICAL INDEX OF CANADIAN CHARTS AFFECTED

This numerical index lists all nautical charts mentioned in this monthly edition of Notices to Mariners. Only charts appearing in Section 2 of this publication require a chart correction. The appearance of charts in all other sections, particularly those related to the correction of other nautical publications, is included here for reference.

| Chart No. | Page | Chart No. | Page | Chart No. | Page | Chart No. | Page |
|------------------|---|------------------|---|------------------|-------------|------------------|-------------|
| 1233 | 13 , 35 | 4006 | 20 | | | | |
| 1234 | 13 , 35 | 4013 | 20 , 21 | | | | |
| 1310 | 39 | 4015 | 22 | | | | |
| 1311 | 38 , 39 | 4023 | 22 , 23 , 33 , 34 | | | | |
| 1312 | 13 , 14 , 37 , 38 | 4045 | 23 | | | | |
| 1313 | 36 , 37 | 4049 | 23 , 24 | | | | |
| 1314 | 36 | 4374 | 24 , 32 | | | | |
| 1315 | 35 | 4375 | 24 | | | | |
| 1317 | 14 , 35 | 4405 | 24 | | | | |
| 1320 | 14 , 35 | 4406 | 24 , 33 | | | | |
| 1350 | 10 | 4467 | 24 , 25 , 33 | | | | |
| 1351 | 14 , 15 , 16 | 4509 | 32 | | | | |
| 1430 | 11 , 16 , 39 | 4622 | 25 | | | | |
| 1432 | 17 , 18 , 39 , 40 , 41 | 4820 | 25 | | | | |
| 1550 | 18 , 41 | 4821 | 25 | | | | |
| 1553 | 18 , 41 | 4861 | 32 | | | | |
| 2017 | 10 | 4863 | 25 | | | | |
| 2029 | 41 | 4865 | 25 , 32 | | | | |
| 2201 | 18 | 4886 | 25 , 32 | | | | |
| 2235 | 19 | 4905 | 26 | | | | |
| 2241 | 41 | 4909 | 11 , 12 , 26 , 27 , 28 , 34 , 35 | | | | |
| 2282 | 19 , 41 | 4911 | 28 , 33 | | | | |
| 2300 | 19 | 4935 | 28 , 29 , 33 | | | | |
| 2303 | 19 , 41 | 5165 | 29 , 32 | | | | |
| 2304 | 19 | 6211 | 29 | | | | |
| 4001 | 19 , 20 | 6258 | 29 | | | | |
| 4003 | 20 | 8012 | 29 | | | | |

TRANSPORT CANADA – RESTRICTED SPEED AREA - ST. CLAIR AND DETROIT RIVERS

(Recurrent publication of notice *1103/12, originally published in the *Notices to Mariners Publication - Eastern Edition 11/2012*.)

Since November 14, 2012, the restricted speed area currently in place as per the St. Clair and Detroit River Navigation Safety Regulations between the Detroit River light and Peche Island light is reduced in size by relocating the southern point of the restricted speed area from its current location at the Detroit River light to a new location at Bar Point light D33.

CANADIAN COAST GUARD PUBLICATION – COMMENTS AND SUGGESTIONS ON NOTICES TO MARINERS (NOTMAR) PUBLICATIONS

In an effort to continuously improve the Notices to Mariners publications and to provide the most efficient service possible, the Notices to Mariners team invites all mariners and other interested parties to submit comments and suggestions on possible improvements to its various publications and services at the following email address: Notmar.XNCR@dfo-mpo.gc.ca

CANADIAN HYDROGRAPHIC SERVICE – MODIFICATIONS TO THE 2020 CANADIAN TIDE AND CURRENT TABLES VOLUME 1 – ATLANTIC COAST AND BAY OF FUNDY

(Recurrent publication of notice *203/20, originally published in the *Notices to Mariners Publication - Eastern Edition 02/2020*.)

The Canadian Hydrographic Service of the Atlantic Region has identified an error in the 2020 Canadian Tide and Current Tables Volume 1 - Atlantic Coast and Bay of Fundy, Tide tables for Holyrood, Newfoundland (station #925)

Mariners must refer to the following link for updated information on Holyrood's Tide Tables:
http://tides.gc.ca/eng/data/table/2020/wlev_sec/925

SAGUENAY-ST. LAWRENCE MARINE PARK AND SURROUNDING WATERS – WHALE PROTECTION

(Recurrent publication of notice *404/20, originally published in the *Notices to Mariners Publication - Eastern Edition 04/2020*.)

The waters in and around the Saguenay–St. Lawrence Marine Park are well known for the resident endangered beluga population and the wide diversity of whales that migrate there to feed, particularly between April and November.

REGULATORY PROTECTION MEASURES

All whale species that are found in the St. Lawrence are protected under the *Marine Mammal Regulations*, pursuant to the *Fisheries Act*. Within the boundaries of the Marine Park, specific measures are set out in the *Marine Activities in the Saguenay–St. Lawrence Marine Park Regulations*, pursuant to the establishment of the *Saguenay–St. Lawrence Marine Park Act*. Any collision with a marine mammal within the Marine Park must immediately be reported to a park warden at 1-866-508-9888. For collisions that occur outside the Marine Park or for any situation involving a marine mammal that is dead or in trouble, contact the emergency network at 1-877-722-5346 or on VHF channel 16.

For more information on the Saguenay–St. Lawrence Marine Park, see notice 5C of the *Notices to Mariners Annual Edition 2020*.

VOLUNTARY PROTECTION MEASURES

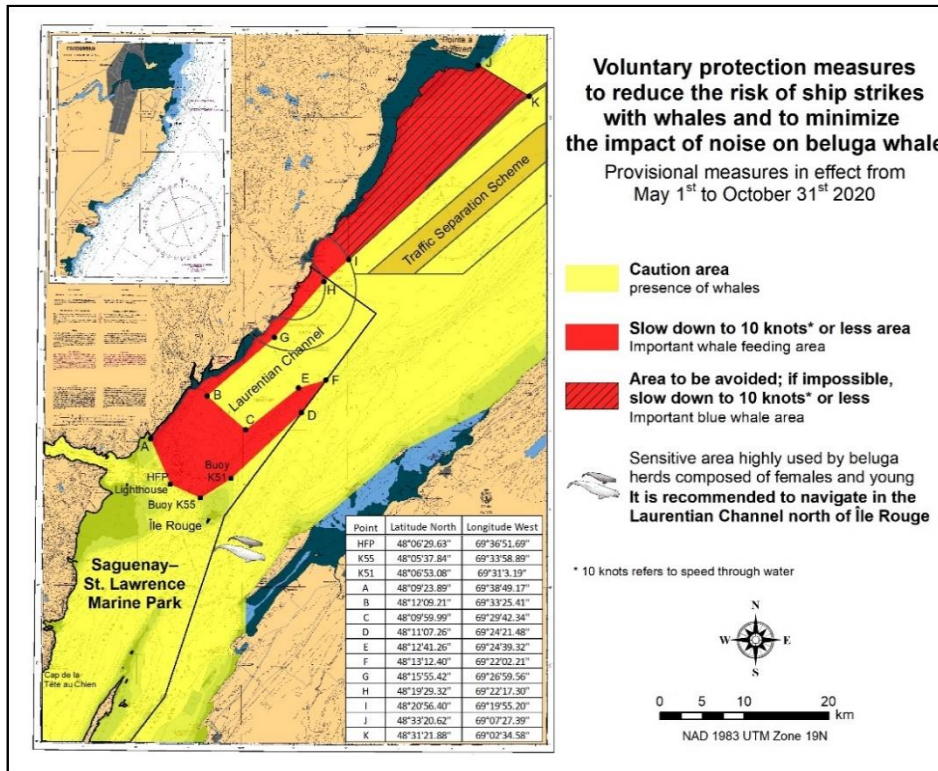
Provisional measures in effect from May 1 to October 31, 2020. See map at the end of this notice.

These measures apply to merchant vessels and cruise ships between Pointe à Boisvert and Cap de la Tête au Chien to prevent collisions with whales. These measures should only be taken when they will not jeopardize navigational safety.

Caution area (yellow area): To reduce the risk of collisions with whales that can be present anywhere in this area, heightened vigilance of navigators is critical. Posting a lookout is recommended in order to increase the chances of seeing the whales and thus taking necessary measures to avoid them. If bypassing the whales is not possible, slow down and wait for the animals to move away to a distance greater than 400 metres (0.215 nautical miles) before resuming original speed. It is more difficult to see the animals at night therefore increased caution is recommended.

Slow down to 10 knots or less area (red area): To reduce the risk of collisions with whales in this feeding area, it is recommended that vessels slow down to a maximum speed through the water of 10 knots and post a lookout. It is further recommended to remain in the Laurentian Channel to the north of Île Rouge to minimize the impact of noise in a sensitive area south of this island, which is highly frequented by herds of beluga whales composed of females and young.

Area to be avoided (hatched red area): To reduce noise and the risk of collisions with whales, vessels should avoid transiting through this area which is highly frequented by blue whales, an endangered species. If the area cannot be avoided, slow down to a speed through the water of 10 knots or less.



TRANSPORT CANADA – COVID-19 MEASURES, UPDATES AND GUIDANCE

(Recurrent publication of notice *401/20, originally published in the *Notices to Mariners Publication - Eastern Edition 04/2020*.)

Please refer to the link below for the latest updates to transportation related measures taken by Transport Canada in response to the evolving novel Coronavirus disease (COVID-19):

<https://www.tc.gc.ca/en/initiatives/covid-19-measures-updates-guidance-tc.html>

For travel advice and all other updates, please visit: Canada.ca/coronavirus

CANADIAN HYDROGRAPHIC SERVICE – MODIFICATIONS TO THE 2020 CANADIAN TIDE AND CURRENT TABLES, VOLUME 2 – GULF OF ST. LAWRENCE

(Recurrent publication of notice *506/20, originally published in the *Notices to Mariners Publication - Eastern Edition 05/2020*.)

The Canadian Hydrographic Service of the Quebec Region has identified a correction in the 2020 Canadian Tide and Current Tables, Volume 2, Gulf of St. Lawrence, on page 79.

Mariners should replace a section of Table 3 with the corresponding section annexed below:

<https://www.notmar.gc.ca/publications/monthly-mensuel/images/ed052020-part1-vol2-p79.pdf>

SAGUENAY–ST. LAWRENCE MARINE PARK - BELUGA WHALE PROTECTION: SLOWDOWN AREA AT THE MOUTH OF THE SAGUENAY FJORD AND AREA CLOSURE AT BAIE SAINTE-MARGUERITE

(Recurrent publication of notice *605/20, originally published in the *Notices to Mariners Publication - Eastern Edition 06/2020*.)

The Saguenay–St. Lawrence Marine Park and its surrounding area are at the heart of endangered beluga whale critical summer habitat. Marine mammal protection measures have been put in place in accordance with the *Marine Activities in the Saguenay–St. Lawrence Marine Park Regulations* within the limits of the Marine Park.

However, important feeding, calving and rearing areas for beluga whales require greater protection to ensure the recovery of the species. The portion of the Saguenay situated between the mouth of the Fjord and Baie Sainte-Marguerite is one of the areas most used by females and their young from May to October. The mouth of the Saguenay is known as a feeding ground and Baie Sainte-Marguerite as a calving and rearing area.

In order to prevent collisions with beluga whales, a compulsory 15-knot slowdown area is in effect from May 1st to October 31st at the mouth of the Saguenay. To ensure tranquility for female belugas and their young during the critical calving period, access to Baie Sainte-Marguerite is prohibited to all vessels from June 21st to September 21st, except for special authorizations (see description below).

For safety reasons, *the slowdown area measure at the mouth of the Saguenay Fjord does not apply* to cargo ships (see the monthly edition of *Notice to Mariners* from May to October for voluntary protection measures in the St. Lawrence Estuary). An enhanced vigilance is, however, recommended to all navigators between the mouth of the Saguenay Fjord and Baie Sainte-Marguerite for the protection of beluga whales.

For more information on the Saguenay–St. Lawrence Marine Park, see notice 5C of the *Notices to Mariners Annual Edition 2020* or visit <http://parcmarin.qc.ca/home/>.

REGULATORY PROTECTION MEASURES — BELUGA WHALE

Entire Marine Park Territory:

- When beluga whales are less than half a nautical mile (926 metres) from a motorized vessel, the vessel must maintain a speed of between 5 and 10 knots.
- All vessels, including human-powered vessels (kayaks and canoes), must continue to move forward and maintain their heading.
- All vessels must maintain a minimum distance of 400 metres from beluga whales at all times.

For more information concerning the regulations, consult: <http://marinepark.ca/protect/#regulations>.

Mouth of the Saguenay Fjord (Figure 1) — Slowdown Area (area cross-hatched in red):

- Maximum speed at the mouth of the Saguenay between buoys S7 and S8 and the ferry docks between Baie-Sainte-Catherine and Tadoussac is 15 knots from May 1st to October 31st.

Baie Sainte-Marguerite (Figure 2) — Area Closure (red area):

- From June 21st to September 21st, vessels must not enter the red area, which follows a line between Cap Nord-Ouest and Cap Sainte-Marguerite.
- Special authorizations are granted only for kayaks, canoes and recreational fishermen who must travel without stopping along a corridor within 10 metres of the shore or in shallow areas.

VOLUNTARY PROTECTION MEASURES

Baie Sainte-Marguerite sector (Figure 2) — Transit Area (area cross-hatched in yellow):

- From June 21st to September 21st, navigation in this area is recommended at a speed of between 5 and 10 knots without stopping.

The purpose of this transit area is to favour respect of the *Marine Activities in the Saguenay–St. Lawrence Marine Park Regulations*, since beluga whales are often present in the Baie Sainte-Marguerite sector.

INFORMATION

All incidents, including collisions with whales, must be reported without delay by dialling 1-866-508-9888. For any other situation concerning a marine mammal that is either dead or in trouble, contact the emergency network at 1-877-722-5346, or use VHF channel 16.

Figure 1

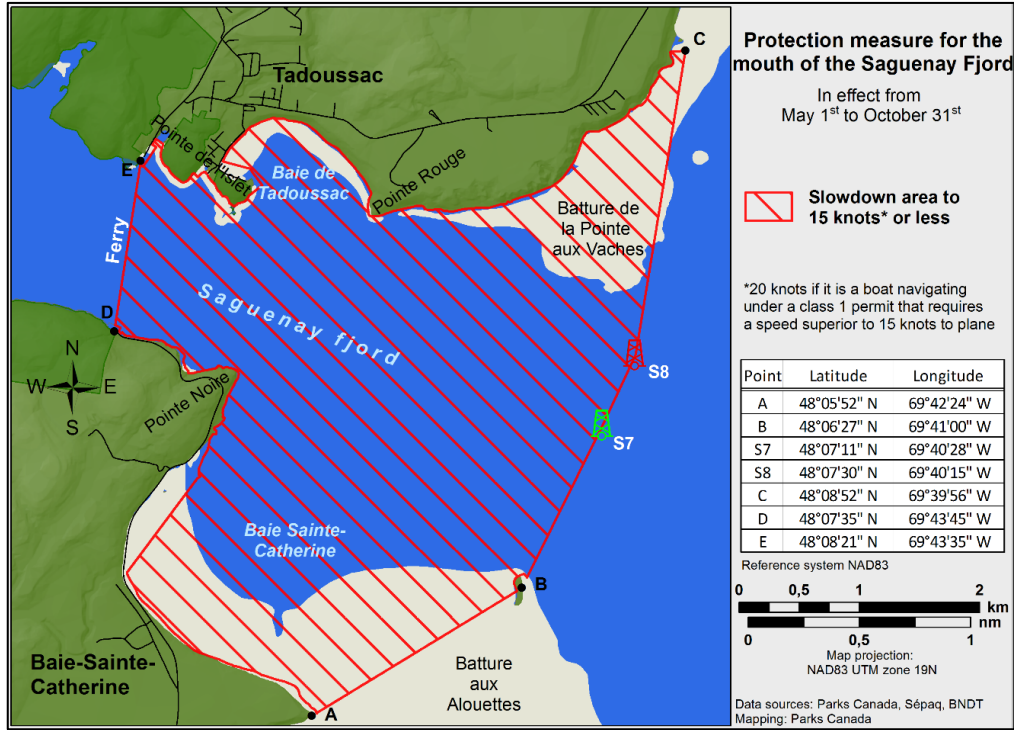
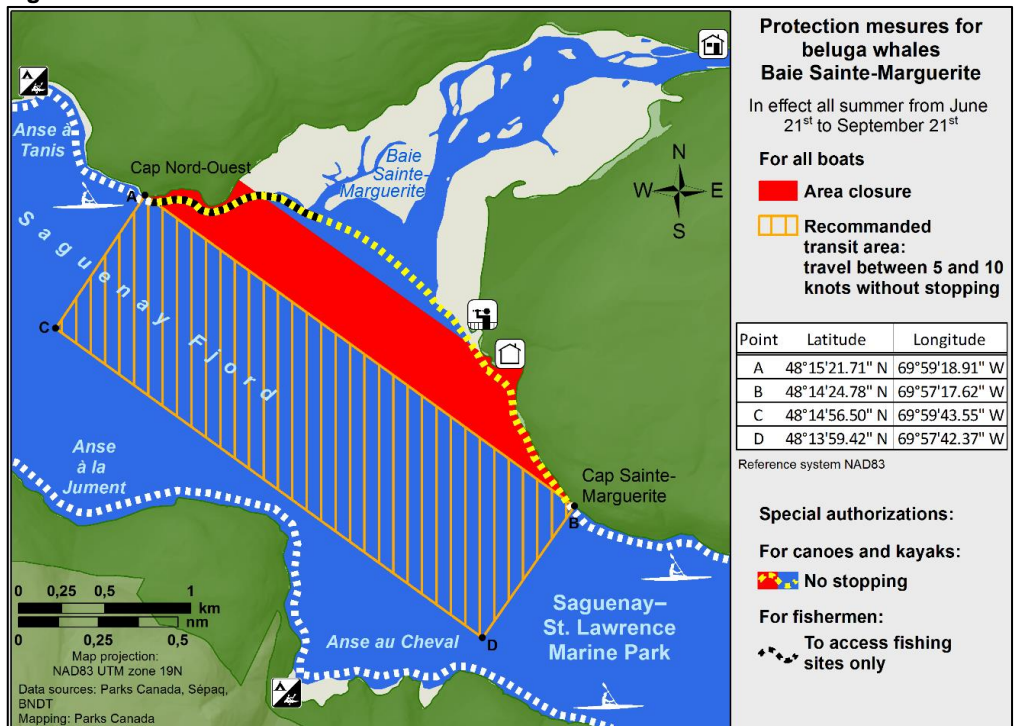


Figure 2



GULF OF ST. LAWRENCE – PROTECTION OF THE NORTH ATLANTIC RIGHT WHALE

(Recurrent publication of notice *706/20, originally published in the *Notices to Mariners Publication - Eastern Edition 07/2020*.)

Reference: Notice *504/20 is cancelled.

Due to changing migration patterns of North Atlantic right whales and their increased presence in the Gulf of St. Lawrence, the Government of Canada has established seasonal speed restrictions in specific zones. These speed restrictions are defined as “static zones”, “dynamic shipping zones”, “seasonal management areas”, a trial “voluntary speed restriction zone” and a “restricted area”. [See the map below for details](#).

Note: Navigational Warnings with these speed restrictions are considered to be Notices to Shipping, which vessels **must follow** as per the *Interim Order Protecting North Atlantic Right Whales (Eubalaena Glacialis) in the Gulf of St Lawrence* and the *Interim Order for the protection of North Atlantic Right Whales (Eubalaena Glacialis) in and near the Shediac Valley* for the restricted area.

Speed restriction zones are described in monthly Notices to Mariners (NOTMARs), which are published by the Canadian Coast Guard (CCG). The status of these zones is broadcast through Navigational Warnings (NAVWARNs), which are published by the CCG’s Marine Communications and Traffic Services (MCTS) Centres.

Changes to speed restriction zones

Based on consultations with industry and on scientific data, changes to the speed restriction zones will be effective from April 28th, 2020, while the [restricted area](#) will be implemented as per the *Interim Order for the Protection of North Atlantic Right Whales (Eubalaena glacialis) in and near the Shediac Valley*.

- Portions of the static zones located north and south of dynamic shipping zone E are now changed to seasonal management area 1 (north of dynamic shipping zone E) and seasonal management area 2 (south of dynamic shipping zone E).
- A trial voluntary speed restriction of 10.0 knots over the ground spanning from Cabot Strait (a line running from Cape North NS to Cape Ray NL) to the eastern edge of dynamic shipping zone E, at the beginning and end of the season.
- A restricted area located in and near the Shediac Valley, determined based on aggregation of North Atlantic right whales.

Please refer to the latest NAVWARN issued by the CCG-MCTS for all speed restrictions currently in effect.

Speed Restriction Measures for 2020

These restrictions will be in effect from **April 28 to November 15, 2020**.

Static zones

In the static zones, **all** vessels above **13 m** in length overall (LOA) must proceed at a speed of not more than 10.0 knots over the ground.

Coordinates for the northern static zone:

- 50° 20' N 065° 00' W
- 49° 13' N 065° 00' W
- 48° 40' N 064° 13' W
- 48° 40' N 062° 40' W
- 48° 03' N 061° 07.5' W
- 47° 58.1' N 061° 03.5' W
- 48° 00' N 061° 00' W
- 49° 04' N 061° 00' W
- 49° 04' N 062° 00' W
- 49° 43' N 063° 00' W
- 50° 20' N 063° 00' W

Coordinates for the southern static zone:

- 48° 40' N 065° 00' W
- 48° 40' N 062° 40' W
- 48° 03' N 061° 07.5' W
- 47° 58.1' N 061° 03.5' W
- 47° 10' N 062° 30' W
- 47° 10' N 065° 00' W

Mariners will be notified ahead via a NAVWARN should the speed restriction status change, due to inclement weather.

Within any static zone that is not subject to a speed restriction, mariners may proceed at a safe operational speed. Mariners are however encouraged to take into consideration the potential for their vessel striking North Atlantic right whales when considering a “safe operational speed” during navigation.

Dynamic shipping zones

There are five dynamic shipping zones (DSZ) located in the routing systems north and south of Anticosti Island: A, B, C, D and E

Coordinates for the dynamic shipping zones:

- | | | |
|---|---|---|
| Zone A <ul style="list-style-type: none">• 49° 41' N 065° 00' W• 49° 20' N 065° 00' W• 49° 11' N 064° 00' W• 49° 22' N 064° 00' W | Zone B <ul style="list-style-type: none">• 49° 22' N 064° 00' W• 49° 11' N 064° 00' W• 48° 48' N 063° 00' W• 49° 00' N 063° 00' W | Zone C <ul style="list-style-type: none">• 49° 00' N 063° 00' W• 48° 48' N 063° 00' W• 48° 24' N 062° 00' W• 48° 35' N 062° 00' W |
| Zone D <ul style="list-style-type: none">• 50° 16' N 064° 00' W• 50° 00' N 064° 00' W• 49° 56' N 063° 00' W• 50° 16' N 063° 00' W | Zone E <ul style="list-style-type: none">• 48° 35' N 062° 00' W• 48° 24' N 062° 00' W• 48° 03' N 061° 07.5' W• 47° 58.1' N 061° 03.5' W• 48° 00' N 061° 00' W• 48° 10.5' N 061° 00' W | |

If the Government of Canada does not detect North Atlantic right whales in these zones, vessels may transit through them at a safe operational speed.

When the Government of Canada detects a North Atlantic right whale in a dynamic shipping zone, vessels above **13 m** in length overall (LOA):

- will be notified through a NAVWARN; and
- must proceed at a speed of not more than 10.0 knots over the ground within that zone.

Speed restrictions in the dynamic shipping zones

The detection of North Atlantic right whales in one or more dynamic shipping zone(s), will trigger a speed restriction in the concerned zone(s). The speed restriction in the dynamic shipping zone(s) will be in effect for 15 days from the date of issuance of the NAVWARN. We may extend a speed restriction past the 15 days if North Atlantic right whales continue to be detected.

When a NAVWARN is issued implementing a speed restriction in one or more dynamic shipping zone(s), vessels above **13 m** in length (LOA) must not exceed a speed of 10.0 knots over the ground.

Within any zone that is not subject to a speed restriction, mariners may proceed at a safe operational speed. Mariners are however encouraged to take into consideration the potential for their vessel striking North Atlantic right whales when considering a “safe operational speed” during navigation.

Seasonal management areas

Seasonal management area 1 (SMA-1) and seasonal management area 2 (SMA-2) are speed restriction areas located north and south of dynamic shipping zone E, respectively.

Within seasonal management areas, vessels above **13 m** in length (LOA):

- must restrict their speed so as not to exceed 10.0 knots over the ground from April 28th to June 30th, 2020; and
- are allowed to proceed at safe operational speed from July 1st to November 15th, 2020, unless a North Atlantic right whale is detected. If a whale is detected, a speed restriction of 10.0 knots over the ground will be triggered for 15 days from the date of issuance of the NAVWARN. The speed restriction may be extended past the 15 days if North Atlantic right whales continue to be detected.

MONTHLY NOTICES TO MARINERS
EASTERN EDITION 08/2020
SECTION 1 – GENERAL AND SAFETY INFORMATION

Coordinates for the SMA-1:

- 49° 04' N 062° 00' W
- 49° 04' N 061° 00' W
- 48° 10.5' N 061° 00' W
- 48° 35' N 062° 00' W

Coordinates for the SMA-2:

- 48° 24' N 062° 00' W
- 48° 03' N 061° 07.5' W
- 47° 58.1' N 061° 03.5' W
- 47° 26.69' N 062° 00' W

Restricted area

In the summer months, an important proportion of the total North Atlantic right whale population gathers for feeding and surface activity near the [Shediac Valley](#). Since this makes the North Atlantic right whale more susceptible to vessel collisions, a mandatory restricted area will be put in place in and near the [Shediac Valley](#). The effective date and exact location of the area were based on the observed distribution of the whales. *The Interim Order for the Protection of North Atlantic Right Whales (Eubalaena glacialis) in and near the Shediac Valley* will provide the necessary details. This information will also be communicated to mariners through navigational warnings and notices to fish harvesters.

Vessels above **13 m** in length (LOA) will be required to:

- avoid the area unless they are part of the exceptions listed in the IO;
- exempted vessels transiting the area must do so at a speed not exceeding 8.0 knots over the ground.

The location and dimension of the restricted area will not be modified.

Trial voluntary speed restriction in Cabot Strait

To coincide with the North Atlantic right whales entering and exiting the Gulf of St. Lawrence, we are putting in place a trial voluntary speed restriction in Cabot Strait from April 28th to June 15th, 2020, and from October 1st to November 15th, 2020.

- During this period, vessels above 13 m in length (LOA) will be asked to voluntarily reduce their speed so as to not exceed 10.0 knots over the ground.
- Outside of the restriction period, vessels will be able to proceed at safe operational speeds.

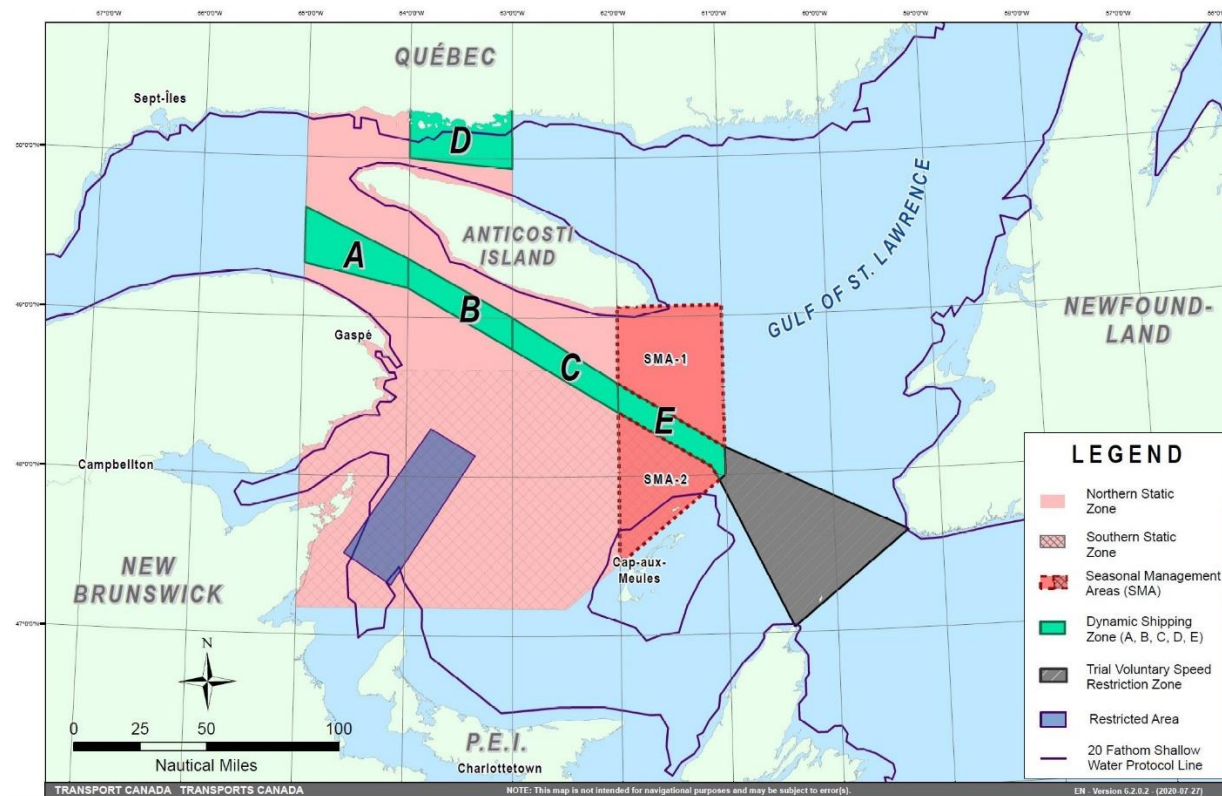
Voluntary speed restriction zone coordinates:

- 48° 10.5' N 061° 00' W
- 47° 37.2' N 059° 18.5' W
- 47° 02' N 060° 23.7' W
- 47° 58.1' N 061° 03.5' W
- 48° 00' N 061° 00' W

Map of the Gulf of St. Lawrence

The following map shows

- the speed restriction zone, in pink (static zones);
- the dynamic shipping zones, in green;
- the seasonal management areas, in dark pink;
- the trial voluntary speed restriction zone, in grey; and
- the restricted area, in dark blue.



Map showing the two static zones (north and south), the five dynamic shipping zones (A, B, C, D and E), the seasonal management areas, the restricted area, the trial voluntary speed restriction zone and the 20 fathom shallow water protocol line.

This map is for visual representation only and is not to be used for navigation or enforcement.

NAVWARN broadcasts

The CCG-MCTS issues and publishes NAVWARNs:

- by radio broadcast; and
- online at [Canada's Maritime Information Portal](#) and its [Navigational Warnings](#) site.

Mariners must ensure they have accurate and up-to-date information about the protection of the North Atlantic right whale, as in all applicable NOTMARs and NAVWARNs.

For the North Atlantic right whale speed restriction, the NAVWARN that is currently in effect will be provided to vessels subject to the *Vessel Traffic Services Zone Regulations* or the *Eastern Canada Vessel Traffic Services Zone Regulations*:

Outbound vessels

- at Calling-in-Point 10 (St-Laurent); or
- upon a departure downstream from the Quebec pilot station (including the Saguenay River, Chaleur Bay, Miramichi Bay, etc.)

Inbound vessels

- when a clearance to enter Canadian waters is granted

Vessels in transit

- at the last reporting point prior to entering the speed restriction area; and/or
- at 10 nautical miles prior to entering the speed restriction zone

For those vessels not subject to the above-mentioned regulations, vessel operators are required to monitor broadcasts by the Canadian Coast Guard's Marine Communications and Traffic Services (MCTS) network for the most up to date information. For marine radio frequencies and broadcast times, information may be found in the [Radio Aids to Marine Navigation](#) publication.

Aids to navigation

The Canadian Coast Guard is currently testing virtual Automatic Identification System (AIS) aids to navigation (AIS AtoN) in specific areas. These aids notify mariners of a dynamic shipping zone subject to a speed restriction, per NOTMAR 819(T)/2016.

Each dynamic shipping zone is delimited by four virtual AIS AtoN, which can be displayed on a ship's navigation equipment, such as

- Electronic Chart Display and Information System (ECDIS);
- Electronic Chart System (ECS);
- RADAR;
- Minimum Keyboard Display (MKD); and
- Electronic Nautical Chart (ENC).

The Canadian Coast Guard broadcasts the virtual AIS AtoN only when a speed restriction is in effect in one or more testing zones.

Mariners must select the virtual AIS AtoN symbol to view a message such as "SectA1 Spd Lim 10 kt." This message refers to a speed restriction in effect for a specific zone.

Note: This system is not the primary way we communicate this information.

Compliance and enforcement

You must comply with the Interim Orders made pursuant to the *Canada Shipping Act, 2001*, and any NAVWARNs broadcasted and published by the Canadian Coast Guard relating to the Interim Orders, aimed at regulating the navigation for the purposes of protecting the North Atlantic right whales.

If you do not comply with the Interim Orders or instructions in the NAVWARNs related to the Interim Orders, you could face:

- administrative monetary penalties up to a maximum of CAN \$250,000; and/or
- penal sanctions under the *Canada Shipping Act, 2001*.

If your vessel appears to have violated the speed restriction, Transport Canada Marine Safety inspectors will review all information provided through AIS and seek an explanation from the master.

No exemptions to the speed restriction will be granted in advance. However, if a deviation from the speed restrictions is necessary for safety reasons, the following information must be entered into the bridge logbook:

- Reasons for deviation
- Speed at which vessel is operated
- Latitude and longitude at time of deviation
- Time and duration of deviation
- Master of the vessel shall sign and date the bridge logbook entry

For any deviation, Transport Canada will review and consider reasons such as

- Navigating to ensure vessel safety;
- Weather conditions;
- Force majeure (unforeseeable circumstances); and
- Responding to emergencies.

Report a North Atlantic right whale sighting

If you see a North Atlantic right whale that is entangled, injured or dead, please report it to your nearest Canadian Coast Guard Marine Communications and Traffic Services Centre, or as follows:

Southern part of the Gulf of St. Lawrence

Marine Animal Response Society
Telephone: 1-866-567-6277

Newfoundland and Labrador

Whale Release and Strandings
Telephone: 1-888-895-3003

For the Québec Sector

Marine Mammal Emergencies
Telephone: 1-877-722-5346

If you see live, free-swimming whales

- Call 1-902-440-8611 (local) or 1-844-800-8568 (toll free)
- Email: XMARWhalesightings@dfo-mpo.gc.ca

Please consult WhaleMap for the latest right whale observations:

<https://whalemap.ocean.dal.ca/>

***801 CANADIAN HYDROGRAPHIC SERVICE – NAUTICAL CHARTS**

| CHARTS | MAIN TITLE | SCALE | PUBLISHED | CAT# | PRICE |
|---------------------|--|----------|-------------|------|-------|
| New Editions | | | | | |
| 1350 | Sorel-Tracy à/to Otterburn-Park | 1:15 000 | 12-JUN-2020 | 1,3 | 28.00 |
| 2017 | Kingston Harbour and Approaches/et les approches | 1:15 000 | 15-JUL-2020 | 3 | 20.00 |

***802 CANADIAN HYDROGRAPHIC SERVICE – ELECTRONIC NAVIGATIONAL CHARTS**

| S-57 ENC NUMBER | CHART TITLE |
|---------------------|--------------|
| NEW PRODUCTS | |
| CA573479 | Prinyer Cove |

***803 CANADIAN HYDROGRAPHIC SERVICE – RASTER DIGITAL CHARTS (BSB V3)**

| CHARTS | MAIN TITLE | SCALE | PUBLISHED |
|---------------------|--|----------|-------------|
| New Editions | | | |
| RM-1350 | Sorel-Tracy à/to Otterburn-Park | 1:15 000 | 12-JUN-2020 |
| RM-2017 | Kingston Harbour and Approaches/et les approches | 1:15 000 | 15-JUL-2020 |

***804 TRANSPORT CANADA – SHIP SAFETY BULLETINS #11, #19 AND #20/2020**

New and modified **Ship Safety Bulletins** have recently been posted on the Transport Canada website at www.tc.gc.ca/ssb-bsn/.

To view or download these bulletins, please click on the links below:

[SSB#11/2020](#) – Protecting the North Atlantic right whale: speed restriction measures in the Gulf of St. Lawrence
(Modified 2020-07-30)
RDIMS#15505520

[SSB#19/2020](#) – Protecting Killer Whales in the Waters of Southern British Columbia
RDIMS#15682274

[SSB#20/2020](#) – Temporary Measures Regarding Marine Medical Certificates
RDIMS#16749881

Sign up for [e-Bulletin](#) to receive an e-mail notice each time a new Ship Safety Bulletin is published on our website.

Contact us at marinesafety-securitemaritime@tc.gc.ca or 1-855-859-3123 (Toll Free).

***805 LAC SAINT-LOUIS – UNLIT BUOY REPOSITIONED**

Reference Chart: 1430

The following unlit buoy has been repositioned to the following coordinates:

Pointe à Valois buoy AM33 (LL 5032.525): 45° 21' 26.0"N 073° 59' 27.5"W (Q2020-040)

***806 DÉTROIT DE NORTHUMBERLAND / NORTHUMBERLAND STRAIT: PARTIE OUEST / WESTERN PORTION: PORTS / HARBOURS – UNLIT BUOYS REPOSITIONED**

Reference Chart: 4909

The following unlit buoys have been repositioned to the following coordinates:

| | | | |
|-------------------|---------------|----------------|-----------------|
| Cocagne Buoy XT6 | (LL 6113.06): | 46° 22' 16.1"N | 064° 34' 18.1"W |
| Cocagne Buoy XT7 | (LL 6113.07): | 46° 22' 08.9"N | 064° 34' 17.2"W |
| Cocagne Buoy XT9 | (LL 6113.09): | 46° 22' 00.3"N | 064° 34' 29.4"W |
| Cocagne Buoy XT10 | (LL 6113.1): | 46° 21' 59.6"N | 064° 34' 41.3"W |
| Cocagne Buoy XT11 | (LL 6113.11): | 46° 21' 53.1"N | 064° 34' 40.8"W |
| Cocagne Buoy XT12 | (LL 6113.12): | 46° 21' 50.7"N | 064° 34' 54.1"W |

(G2020-039 to 044)

***807 DÉTROIT DE NORTHUMBERLAND / NORTHUMBERLAND STRAIT: PARTIE OUEST / WESTERN PORTION: PORTS / HARBOURS – BUOYS CHANGED AND REPOSITIONED**

Reference Chart: 4909

The following lighted buoys have been replaced by unlit buoys and repositioned to the following coordinates:

| | | | | | | |
|---------------------------|------|------------|----|-------------|----------------|-----------------|
| Cocagne Harbour buoy XT8 | from | LL 1114.24 | to | LL 6113.08: | 46° 22' 07.6"N | 064° 34' 31.8"W |
| Cocagne Harbour buoy XT13 | from | LL 1114.3 | to | LL 6113.13: | 46° 21' 47.6"N | 064° 34' 51.0"W |
| Cocagne Harbour buoy XT18 | from | LL 1114.5 | to | LL 6113.18: | 46° 21' 09.2"N | 064° 35' 35.6"W |

(G2020-050, 051, 053)

***808 DÉTROIT DE NORTHUMBERLAND / NORTHUMBERLAND STRAIT: PARTIE OUEST / WESTERN PORTION:
PORTS / HARBOURS – UNLIT BUOYS PERMANENTLY ESTABLISHED**

Reference Chart: 4909

The following unlit buoys have been permanently established:

| | | |
|---------------------------|--------------|----------------------------------|
| Cocagne Harbour buoy XT15 | (LL 6113.15) | (46° 21' 35.0"N 064° 34' 56.0"W) |
| Cocagne Harbour buoy XT16 | (LL 6113.16) | (46° 21' 28.8"N 064° 35' 10.5"W) |
| Cocagne Harbour buoy XT19 | (LL 6113.19) | (46° 20' 50.1"N 064° 35' 42.6"W) |
| Cocagne Harbour buoy XT20 | (LL 6113.2) | (46° 20' 44.3"N 064° 36' 03.7"W) |
| Cocagne Harbour buoy XT21 | (LL 6113.21) | (46° 20' 30.5"N 064° 36' 07.3"W) |
| Cocagne River buoy XT23 | (LL 6113.23) | (46° 20' 18.8"N 064° 36' 30.5"W) |
| Cocagne River buoy XT24 | (LL 6113.24) | (46° 20' 19.3"N 064° 36' 34.5"W) |
| Cocagne River buoy XT25 | (LL 6113.25) | (46° 20' 17.4"N 064° 36' 41.9"W) |
| Cocagne River buoy XT26 | (LL 6113.26) | (46° 20' 18.0"N 064° 36' 43.7"W) |
| Cocagne River buoy XT27 | (LL 6113.27) | (46° 20' 16.9"N 064° 36' 49.6"W) |
| Cocagne River buoy XT28 | (LL 6113.28) | (46° 20' 17.2"N 064° 36' 50.9"W) |
| Cocagne River buoy XT29 | (LL 6113.29) | (46° 20' 15.7"N 064° 36' 53.8"W) |
| Cocagne River buoy XT30 | (LL 6113.3) | (46° 20' 15.7"N 064° 36' 55.3"W) |
| Cocagne River buoy XT31 | (LL 6113.31) | (46° 20' 14.4"N 064° 36' 57.1"W) |
| Cocagne River buoy XT32 | (LL 6113.32) | (46° 20' 14.0"N 064° 36' 59.1"W) |
| Cocagne River buoy XT33 | (LL 6113.33) | (46° 20' 12.6"N 064° 37' 00.1"W) |
| Cocagne River buoy XT34 | (LL 6113.34) | (46° 20' 12.1"N 064° 37' 02.0"W) |
| Cocagne River buoy XT35 | (LL 6113.35) | (46° 20' 09.6"N 064° 37' 03.4"W) |
| Cocagne River buoy XT36 | (LL 6113.36) | (46° 20' 09.4"N 064° 37' 05.3"W) |
| Cocagne River buoy XT37 | (LL 6113.37) | (46° 20' 05.9"N 064° 37' 04.1"W) |
| Cocagne River buoy XT38 | (LL 6113.38) | (46° 20' 05.9"N 064° 37' 06.4"W) |
| Cocagne River buoy XT39 | (LL 6113.39) | (46° 20' 02.8"N 064° 37' 05.1"W) |
| Cocagne River buoy XT40 | (LL 6113.4) | (46° 20' 02.8"N 064° 37' 07.1"W) |
| Cocagne River buoy XT41 | (LL 6113.41) | (46° 19' 59.8"N 064° 37' 06.5"W) |
| Cocagne River buoy XT42 | (LL 6113.42) | (46° 20' 00.1"N 064° 37' 08.2"W) |
| Cocagne River buoy XT44 | (LL 6113.44) | (46° 19' 57.2"N 064° 37' 11.6"W) |
| Cocagne River buoy XT45 | (LL 6113.45) | (46° 19' 56.4"N 064° 37' 10.7"W) |
| Cocagne River buoy XT46 | (LL 6113.46) | (46° 19' 55.7"N 064° 37' 12.9"W) |
| Cocagne River buoy XT47 | (LL 6113.47) | (46° 19' 53.3"N 064° 37' 13.0"W) |
| Cocagne River buoy XT49 | (LL 6113.49) | (46° 19' 52.8"N 064° 37' 16.4"W) |
| Cocagne River buoy XT50 | (LL 6113.5) | (46° 19' 56.2"N 064° 37' 20.8"W) |
| Cocagne River buoy XT51 | (LL 6113.51) | (46° 19' 55.6"N 064° 37' 21.4"W) |
| Cocagne Harbour buoy XL2 | (LL 6114.02) | (46° 21' 12.9"N 064° 35' 02.4"W) |
| Cocagne Harbour buoy XL3 | (LL 6114.03) | (46° 21' 16.5"N 064° 34' 52.2"W) |
| Cocagne Harbour buoy XL4 | (LL 6114.04) | (46° 21' 13.2"N 064° 34' 42.3"W) |

(G2020-055, 056, 058 to 060, 063, 064, 066, 068, 073 to 078, 092, 093, 101 to 108, 110, 111, 113, 114, 116 to 121)

MONTHLY NOTICES TO MARINERS
EASTERN EDITION 08/2020
SECTION 2 – CHART CORRECTIONS

1233 - Cap aux Oies à/to Sault-au-Cochon - New Edition - 11-MAY-2012 - NAD 1983

07-AUG-2020

LNM/D. 22-MAY-2020

Delete fog signal BELL against red starboard hand lighted pillar buoy, marked H68
(See Chart No. 1, R14, Qf)
This notice affects Electronic Navigational Chart: CA479021
47°25'02.1"N 070°13'00.2"W
(Q2020086) LL(1867) DFO(6410380-01)

Delete fog signal BELL against green port hand lighted pillar buoy, marked H79
(See Chart No. 1, R14, Qg)
This notice affects Electronic Navigational Chart: CA479021
47°21'18.1"N 070°15'19.3"W
(Q2020087) LL(1870) DFO(6410381-01)

1234 - Cap de la Tête au Chien au/to Cap aux Oies - New Edition - 04-NOV-2011 - NAD 1983

07-AUG-2020

LNM/D. 29-MAY-2020

Delete fog signal BELL against red and white fairway lighted pillar buoy, marked ILIEV
(See Chart No. 1, R14, Qh)
This notice affects Electronic Navigational Chart: CA379029
47°47'14.2"N 069°47'10.3"W
(Q2020072) LL(1830) DFO(6410374-01)

Delete fog signal BELL against green, red and green port bifurcation lighted pillar buoy, marked HF MOR
(See Chart No. 1, R14, Qj)
This notice affects Electronic Navigational Chart: CA379029
47°36'08.1"N 070°02'16.2"W
(Q2020073) LL(1841) DFO(6410375-01)

1312 - Port de Sorel-Tracy - New Edition - 10-MAY-2019 - NAD 1983

14-AUG-2020

LNM/D. 15-MAY-2020

Affix patch
Download Patch - ftp://ftp.dfo-mpo.gc.ca/patches/1312_6410291_1_202005191627.pdf
This notice affects Electronic Navigational Chart: CA579130
46°02'11.6"N 073°07'41.0"W
DFO(6410291-01)

Add depth of 4 metres 4 decimetres
(See Chart No. 1, I10)
This notice affects Electronic Navigational Chart: CA579130
46°02'59.7"N 073°06'48.3"W
DFO(6410291-02)

Delete depth of 6 metres 2 decimetres
(See Chart No. 1, I10)
This notice affects Electronic Navigational Chart: CA579130
46°02'47.1"N 073°07'09.3"W
DFO(6410291-03)

Add depth of 6 metres 1 decimetre
(See Chart No. 1, I10)
This notice affects Electronic Navigational Chart: CA579130
46°02'47.1"N 073°07'09.2"W
DFO(6410291-04)

Delete depth of 5 metres 4 decimetres
(See Chart No. 1, I10)
This notice affects Electronic Navigational Chart: CA579130
46°02'45.1"N 073°07'09.1"W
DFO(6410291-05)

MONTHLY NOTICES TO MARINERS
EASTERN EDITION 08/2020
SECTION 2 – CHART CORRECTIONS

| | | |
|--|--|--|
| Add | depth of 5 metres 6 decimetres (See Chart No. 1, I10) This notice affects Electronic Navigational Chart: CA579130 | 46°02'44.8"N 073°07'09.1"W <i>DFO(6410291-06)</i> |
| Add | depth of 7 metres 0 decimetres (See Chart No. 1, I10) This notice affects Electronic Navigational Chart: CA579130 | 46°02'41.9"N 073°07'09.1"W <i>DFO(6410291-07)</i> |
| 1317 - Sault-au-Cochon à/to Québec - New Edition - 03-APR-2020 - NAD 1983 | | |
| 28-AUG-2020 | | |
| Replace | text 47° 05' W to read 47° 05' N in note ATTENTION / CAUTION. (See Chart No. 1, A14) This notice affects Electronic Navigational Chart: CA479025 | 47°07'40.0"N 070°47'05.0"W <i>DFO(6410446-01)</i> |
| 1320 - Île du Bic au/to Cap de la Tête au Chien - New Chart - 26-AUG-2011 - NAD 1983 | | |
| 07-AUG-2020 | | |
| Delete | fog signal BELL against green port hand lighted pillar buoy, marked K59 (See Chart No. 1, R14, Qg) This notice affects Electronic Navigational Chart: CA379232 | 47°59'06.1"N 069°37'52.2"W <i>(Q2020083) LL(1823.8) DFO(6410378-01)</i> |
| 1351 - Bassin de Chambly à/to Île Sainte-Thérèse - Sheet/Feuille 1 - New Edition - 18-NOV-2016 - NAD 1983 | | |
| 14-AUG-2020 | | |
| Affix | patch Download Patch - ftp://ftp.dfo-mpo.gc.ca/patches/1351_6410232_1_202005191628.pdf This notice affects Electronic Navigational Chart: CA579120 | 45°29'36.0"N 073°15'23.0"W <i>DFO(6410232-01)</i> |
| Add | depth of 5 metres 0 decimetres (See Chart No. 1, I10) This notice affects Electronic Navigational Chart: CA579120 | 45°31'02.0"N 073°14'27.5"W <i>DFO(6410232-02)</i> |
| Delete | depth of 5 metres 6 decimetres (See Chart No. 1, I10) This notice affects Electronic Navigational Chart: CA579120 | 45°31'03.8"N 073°14'26.4"W <i>DFO(6410232-03)</i> |
| Add | depth of 5 metres 0 decimetres (See Chart No. 1, I10) This notice affects Electronic Navigational Chart: CA579120 | 45°31'03.8"N 073°14'26.5"W <i>DFO(6410232-04)</i> |
| Delete | depth of 4 metres 2 decimetres (See Chart No. 1, I10) This notice affects Electronic Navigational Chart: CA579120 | 45°31'07.5"N 073°14'27.9"W <i>DFO(6410232-05)</i> |
| Add | depth of 3 metres 7 decimetres (See Chart No. 1, I10) This notice affects Electronic Navigational Chart: CA579120 | 45°31'07.0"N 073°14'28.7"W <i>DFO(6410232-06)</i> |

MONTHLY NOTICES TO MARINERS
EASTERN EDITION 08/2020
SECTION 2 – CHART CORRECTIONS

Affix patch 45°27'45.0"N 073°16'42.0"W
Download Patch - ftp://ftp.dfo-mpo.gc.ca/patches/1351_6410233_1_202007211616.pdf
This notice affects Electronic Navigational Chart: CA579120
DFO(6410233-01)

Amend vertical clearance of 8 metres 4 decimetres, to read 7 metres 1 decimetre 45°24'58.9"N 073°14'22.7"W
(See Chart No. 1, D22)
This notice affects Electronic Navigational Chart: CA579120
DFO(6410233-08)

1351 - Chambly Écluses/Locks 1,2,3 - Sheet/Feuille 1 - New Edition - 18-NOV-2016 - NAD 1983
14-AUG-2020

LNM/D. 01-NOV-2019

Delete depth of 2 metres 3 decimetres 45°27'03.5"N 073°17'05.5"W
(See Chart No. 1, I10)
This notice affects Electronic Navigational Chart: CA579120
DFO(6410233-02)

Add depth of 2 metres 0 decimetres 45°27'03.7"N 073°17'05.7"W
(See Chart No. 1, I10)
DFO(6410233-03)

Delete depth of 2 metres 6 decimetres 45°27'06.2"N 073°17'04.5"W
(See Chart No. 1, I10)
This notice affects Electronic Navigational Chart: CA579120
DFO(6410233-04)

Add depth of 2 metres 0 decimetres 45°27'06.4"N 073°17'04.4"W
(See Chart No. 1, I10)
This notice affects Electronic Navigational Chart: CA579120
DFO(6410233-05)

Delete depth of 2 metres 9 decimetres 45°27'06.2"N 073°16'59.7"W
(See Chart No. 1, I10)
This notice affects Electronic Navigational Chart: CA579120
DFO(6410233-06)

Add depth of 2 metres 5 decimetres 45°27'05.9"N 073°16'59.9"W
(See Chart No. 1, I10)
This notice affects Electronic Navigational Chart: CA579120
DFO(6410233-07)

1351 - Pointe Naylor au Lac/to Lake Champlain - Sheet/Feuille 4 - New Edition - 18-NOV-2016 - NAD 1983
14-AUG-2020

LNM/D. 01-NOV-2019

Add depth of 0 metres 6 decimetres 45°01'16.7"N 073°21'06.2"W
(See Chart No. 1, I10)
This notice affects Electronic Navigational Chart: CA579127
DFO(6410235-01)

Add depth of 1 metre 4 decimetres 45°01'14.2"N 073°20'58.8"W
(See Chart No. 1, I10)
This notice affects Electronic Navigational Chart: CA579127
DFO(6410235-02)

Add depth of 1 metre 9 decimetres 45°01'16.1"N 073°20'55.5"W
(See Chart No. 1, I10)
This notice affects Electronic Navigational Chart: CA579127
DFO(6410235-03)

MONTHLY NOTICES TO MARINERS
EASTERN EDITION 08/2020
SECTION 2 – CHART CORRECTIONS

| | | |
|---|--|--|
| Delete | depth of 1 metre 6 decimetres (See Chart No. 1, I10) This notice affects Electronic Navigational Chart: CA579127 | 45°01'17.7"N 073°20'59.5"W <i>DFO(6410235-04)</i> |
| Add | depth of 1 metre 7 decimetres (See Chart No. 1, I10) This notice affects Electronic Navigational Chart: CA579127 | 45°01'17.5"N 073°20'58.2"W <i>DFO(6410235-05)</i> |
| Delete | depth of 2 metres 4 decimetres (See Chart No. 1, I10) This notice affects Electronic Navigational Chart: CA579127 | 45°01'17.9"N 073°20'55.2"W <i>DFO(6410235-06)</i> |
| Add | depth of 2 metres 6 decimetres (See Chart No. 1, I10) This notice affects Electronic Navigational Chart: CA579127 | 45°01'17.5"N 073°20'54.1"W <i>DFO(6410235-07)</i> |
| 1351 - Quai des Douanes/Customs Wharf - Sheet/Feuille 4 - New Edition - 18-NOV-2016 - NAD 1983 | | |
| | 14-AUG-2020 | LNM/D. 01-NOV-2019 |
| Affix | patch Download Patch - ftp://ftp.dfo-mpo.gc.ca/patches/1351_6410234_1_202005191630.pdf This notice affects Electronic Navigational Chart: CA579127 | 45°01'27.0"N 073°21'06.5"W <i>DFO(6410234-01)</i> |
| 1430 - Lac Saint-Louis - New Edition - 23-NOV-2018 - NAD 1983 | | |
| | 21-AUG-2020 | LNM/D. 20-MAR-2020 |
| Replace | green port hand spar buoy, marked A29 with green port hand lighted spar buoy FI G, marked A29 (See Chart No. 1, Qg) This notice affects Electronic Navigational Chart: CA479228 | 45°22'39.0"N 073°48'53.8"W <i>(Q2020035) LL(20) DFO(6410322-01)</i> |
| Replace | red starboard hand spar buoy, marked A30 with red starboard hand lighted spar buoy FI R, marked A30 (See Chart No. 1, Qf) This notice affects Electronic Navigational Chart: CA479228 | 45°22'42.7"N 073°49'00.4"W <i>(Q2020036) LL(20.5) DFO(6410323-01)</i> |
| Replace | yellow anchorage spar buoy, marked BEA-C with a yellow anchorage lighted spar buoy FI Y, marked BEA-C (See Chart No. 1, QI) This notice affects Electronic Navigational Chart: CA479228 | 45°19'44.2"N 073°53'19.6"W <i>(Q2020037) LL(31.5) DFO(6410324-01)</i> |
| Affix | patch Download Patch - ftp://ftp.dfo-mpo.gc.ca/patches/1430_6410445_1_202007271119.pdf | 45°21'22.6"N 073°59'20.9"W <i>DFO(6410445-01)</i> |
| 1430 - Rapides de Vaudreuil - New Edition - 23-NOV-2018 - NAD 1983 | | |
| | 21-AUG-2020 | LNM/D. 20-MAR-2020 |
| Add | red starboard hand conical buoy, marked AM62 (See Chart No. 1, Qf) This notice affects Electronic Navigational Chart: CA579229 | 45°23'00.5"N 074°00'18.8"W <i>(Q2020041) DFO(6410336-01)</i> |

MONTHLY NOTICES TO MARINERS
EASTERN EDITION 08/2020
SECTION 2 – CHART CORRECTIONS

1432 - Lac Saint-François/Lake St. Francis A-B - New Edition - 26-DEC-2014 - World Geodetic System 1984

21-AUG-2020

LNMD. 13-SEP-2019

- Amend F 12m to read F G 12m against light 45°11'11.4"N 074°18'28.2"W
(See Chart No. 1, P16)
This notice affects Electronic Navigational Chart: CA473233
(B2020019) LL(99.4) DFO(6604660-01)
- Amend F 23m to read F G 23m against light 45°11'34.2"N 074°17'42.7"W
(See Chart No. 1, P16)
This notice affects Electronic Navigational Chart: CA473233
(B2020020) LL(99.5) DFO(6604661-01)
- Amend F 10m to read F G 10m against light 45°07'20.0"N 074°26'09.9"W
(See Chart No. 1, P16)
This notice affects Electronic Navigational Chart: CA473233
(B2020022) LL(114.1) DFO(6604663-01)
- Amend F Y 20m to read F G 20m against light 45°07'41.3"N 074°24'01.2"W
(See Chart No. 1, P16)
This notice affects Electronic Navigational Chart: CA473233
(B2020038) LL(112) DFO(6604680-01)

1432 - Lac Saint-François/Lake St. Francis B-C - New Edition - 26-DEC-2014 - World Geodetic System 1984

21-AUG-2020

LNMD. 13-SEP-2019

- Amend F 22m to read F G 22m against light 45°06'41.7"N 074°27'26.1"W
(See Chart No. 1, P16)
This notice affects Electronic Navigational Chart: CA473233
(B2020021) LL(114.2) DFO(6604662-01)
- Amend F 10m to read F G 10m against light 45°07'20.0"N 074°26'09.9"W
(See Chart No. 1, P16)
This notice affects Electronic Navigational Chart: CA473233
(B2020022) LL(114.1) DFO(6604663-01)
- Amend F 18m to read F G 18m against light 45°04'14.8"N 074°30'29.7"W
(See Chart No. 1, P16)
This notice affects Electronic Navigational Chart: CA473233
(B2020023) LL(131) DFO(6604665-01)
- Amend Iso 4s 9m to read Iso G 4s 9m against light 45°04'34.9"N 074°30'15.1"W
(See Chart No. 1, P16)
This notice affects Electronic Navigational Chart: CA473233
(B2020024) LL(130) DFO(6604666-01)
- Amend F 18m to read F G 18m against light 45°04'15.5"N 074°30'34.0"W
(See Chart No. 1, P16)
This notice affects Electronic Navigational Chart: CA473233
(B2020025) LL(137) DFO(6604667-01)
- Amend Iso 4s 10m to read Iso G 4s 10m against light 45°04'03.2"N 074°31'03.2"W
(See Chart No. 1, P16)
This notice affects Electronic Navigational Chart: CA473233
(B2020026) LL(136) DFO(6604668-01)
- Amend Iso 4s 11m to read Iso G 4s 11m against light 45°05'33.7"N 074°29'18.8"W
(See Chart No. 1, P16)
This notice affects Electronic Navigational Chart: CA473233
(B2020033) LL(126) DFO(6604673-01)

MONTHLY NOTICES TO MARINERS
EASTERN EDITION 08/2020
SECTION 2 – CHART CORRECTIONS

| | | |
|-------|--|--|
| Amend | F 19m to read F G 19m against light (See Chart No. 1, P16) This notice affects Electronic Navigational Chart: CA473233 | 45°05'47.2"N 074°28'59.2"W (B2020034) LL(127) DFO(6604674-01) |
| Amend | F 24m to read F G 24m against light (See Chart No. 1, P16) This notice affects Electronic Navigational Chart: CA473233 | 45°05'44.4"N 074°29'55.2"W (B2020036) LL(124) DFO(6604676-01) |
| Amend | Iso 4s 12m to read Iso G 4s 12m against light (See Chart No. 1, P16) This notice affects Electronic Navigational Chart: CA473233 | 45°06'01.2"N 074°29'28.2"W (B2020037) LL(123) DFO(6604677-01) |
| Amend | F Y 20m to read F G 20m against light (See Chart No. 1, P16) This notice affects Electronic Navigational Chart: CA473233 | 45°07'41.3"N 074°24'01.2"W (B2020038) LL(112) DFO(6604680-01) |

1550 - Britannia Bay à/to Breckenridge - Sheet/Feuille 1 - New Edition - 27-MAY-2011 - NAD 1983

| | | |
|--------|---|--|
| | | LNMD. 09-SEP-2016 |
| Delete | private green port hand spar buoy, marked KN3 (See Chart No. 1, Qg) | 45°21'10.8"N 075°49'20.6"W (B2020028) DFO(6604671-01) |
| Delete | private red starboard hand spar buoy, marked KN4 (See Chart No. 1, Qf) | 45°21'12.1"N 075°49'25.3"W (B2020029) DFO(6604672-01) |

1553 - Île D'Arcy à/to Balmer Bay - Sheet/Feuille 2 - New Edition - 31-MAR-2006 - NAD 1983

| | | |
|---------|--|---|
| | | LNMD. 08-FEB-2019 |
| Replace | red starboard hand spar buoy marked K66 with red starboard hand lighted spar buoy, FIR, marked K66 (See Chart No. 1, Qf) | 45°56'28.2"N 077°16'29.4"W (B2020027) LL(1310.4) DFO(6604669-01) |
| Add | green port hand lighted Q G spar buoy, marked K65/1 (See Chart No. 1, Qg) | 45°55'50.2"N 077°15'21.5"W (B2020035) LL(1310.1) DFO(6604675-01) |
| Add | red starboard hand spar buoy, marked K64 (See Chart No. 1, Qf) | 45°56'13.6"N 077°15'58.9"W (B2020032) DFO(6604679-01) |

2201 - Georgian Bay / Baie Georgienne - New Edition - 01-MAY-2020 - World Geodetic System 1984

| | | |
|-------|---|--|
| | | 28-AUG-2020 |
| Amend | Fl 10s 79ft 9M to read Fl 10s 82ft 10M against light (See Chart No. 1, P16) This notice affects Electronic Navigational Chart: CA273097, CA373281 | 45°14'42.8"N 081°17'31.1"W (D2020010) LL(826) DFO(6604651-01) |

MONTHLY NOTICES TO MARINERS
EASTERN EDITION 08/2020
SECTION 2 – CHART CORRECTIONS

2235 - Cape Hurd to/à Lonely Island - New Edition - 24-SEP-1999 - NAD 1983

28-AUG-2020

LNMD. 09-OCT-2015

Amend FI 10s 79ft 9M to read FI 10s 82ft 10M against light 45°14'42.8"N 081°17'31.1"W
(See Chart No. 1, P16)
This notice affects Electronic Navigational Chart: CA273097, CA373281
(D2020010) LL(826) DFO(6604651-01)

2282 - Owen Sound to/à Cabot Head - New Edition - 07-JUN-1996 - NAD 1983

28-AUG-2020

LNMD. 14-FEB-2014

Amend FI 10s 24m 9M to read FI 10s 25m 10M against light 45°14'42.8"N 081°17'31.1"W
(See Chart No. 1, P16)
This notice affects Electronic Navigational Chart: CA273097, CA373281
(D2020010) LL(826) DFO(6604651-01)

2282 - Wingfield Basin - New Edition - 07-JUN-1996 - NAD 1983

28-AUG-2020

LNMD. 14-FEB-2014

Amend FI 10s 24m 9M to read FI 10s 25m 10M against light 45°14'42.8"N 081°17'31.1"W
(See Chart No. 1, P16)
This notice affects Electronic Navigational Chart: CA273097, CA373281
(D2020010) LL(826) DFO(6604651-01)

2300 - Lake Superior/Lac Supérieur - New Chart - 24-APR-1998 - NAD 1983

07-AUG-2020

LNMD. 04-OCT-2019

Reposition yellow ODAS/SADO lighted buoy FI(5)Y, marked 45136 from 48°32'04.1"N 086°57'08.0"W
(See Chart No. 1, Q58) to 48°31'57.4"N 086°56'14.0"W
This notice affects Electronic Navigational Chart: CA373066
(D2020020) LL(1108) DFO(6604649-01)

2303 - Jackfish Bay to St. Ignace Island - New Edition - 29-MAY-2015 - US Standard Datum

07-AUG-2020

LNMD. 15-MAY-2020

Reposition yellow ODAS/SADO lighted buoy FI(5)Y 20s, marked 45136 from 48°32'05.3"N 086°57'12.8"W
(See Chart No. 1, Q58) to 48°31'57.4"N 086°56'14.0"W
This notice affects Electronic Navigational Chart: CA373066
(D2020020) LL(1108) DFO(6604649-01)

2304 - Oiseau Bay to/à Jackfish Bay - New Edition - 20-FEB-2004 - NAD 1983

07-AUG-2020

LNMD. 15-MAY-2020

Reposition yellow ODAS/SADO lighted buoy FI(5)Y 20s, marked 45136 from 48°32'05.3"N 086°57'12.8"W
(See Chart No. 1, Q58) to 48°31'57.4"N 086°56'14.0"W
This notice affects Electronic Navigational Chart: CA373066
(D2020020) LL(1108) DFO(6604649-01)

4001 - Gulf of Maine to Strait of Belle Isle / au Detroit de Belle Isle - New Edition - 01-DEC-1995 - NAD 1983

14-AUG-2020

LNMD. 12-JUN-2020

Delete subsurface Ocean Data Acquisition System ODAS/SADO with 48°22'50.3"N 046°31'24.1"W
unknown depth
(See Chart No. 1, L25)
This notice affects Electronic Navigational Chart: CA176030
DFO(6309106-01)

MONTHLY NOTICES TO MARINERS
EASTERN EDITION 08/2020
SECTION 2 – CHART CORRECTIONS

| | | |
|--|--|---|
| Delete | subsurface Ocean Data Acquisition System ODAS/SADO with unknown depth (See Chart No. 1, L25) This notice affects Electronic Navigational Chart: CA176030, CA276101 | 47°30'46.3"N 047°21'26.5"W <i>DFO(6309106-02)</i> |
| Delete | subsurface Ocean Data Acquisition System ODAS/SADO with unknown depth (See Chart No. 1, L25) This notice affects Electronic Navigational Chart: CA176030, CA276101 | 47°16'03.4"N 047°07'06.0"W <i>DFO(6309106-03)</i> |
| Delete | subsurface Ocean Data Acquisition System ODAS/SADO with unknown depth (See Chart No. 1, L25) This notice affects Electronic Navigational Chart: CA176030 | 47°01'23.1"N 046°52'43.4"W <i>DFO(6309106-04)</i> |
| 28-AUG-2020 | | LNMD. 14-AUG-2020 |
| Reposition | private yellow ODAS/SADO lighted pillar buoy FI Y, (Priv) (See Chart No. 1, Q58) | from 40°50'29.0"N 070°14'56.2"W to 40°48'08.6"N 070°20'25.2"W (USCG:24/2020) <i>DFO(6309141-01)</i> |
| 4003 - Cape Breton to / à Cape Cod - New Edition - 21-MAR-2003 - NAD 1983 | | |
| 28-AUG-2020 | | LNMD. 12-JUN-2020 |
| Reposition | private yellow ODAS/SADO lighted pillar buoy FI Y, (Priv) (See Chart No. 1, Q58) | from 40°50'29.0"N 070°14'56.2"W to 40°48'08.6"N 070°20'25.2"W (USCG:24/2020) <i>DFO(6309141-01)</i> |
| 4006 - Newfoundland and Labrador/Terre-Neuve-et-Labrador to Bermuda / aux Bermudes - New Edition - 08-AUG-2003 - NAD 1983 | | |
| 28-AUG-2020 | | LNMD. 12-JUN-2020 |
| Reposition | private yellow ODAS/SADO lighted pillar buoy FI Y, (Priv) (See Chart No. 1, Q58) | from 40°50'29.0"N 070°14'56.2"W to 40°48'08.6"N 070°20'25.2"W (USCG:24/2020) <i>DFO(6309141-01)</i> |
| Reposition | yellow ODAS/SADO lighted super-buoy, marked 41001 (See Chart No. 1, Q58) | from 34°30'06.0"N 072°31'18.0"W to 34°43'27.0"N 072°19'00.0"W (USCG:27/2020) <i>DFO(6309149-01)</i> |
| 4013 - Halifax to / à Sydney - New Edition - 06-SEP-2002 - NAD 1983 | | |
| 07-AUG-2020 | | LNMD. 10-JUL-2020 |
| Amend | FI 20s53ft17M to read FI 21s53ft17M against light (See Chart No. 1, P16) This notice affects Electronic Navigational Chart: CA276204, CA376295 | 45°45'56.0"N 060°06'49.0"W (G2020067) LL(750) <i>DFO(6309032-01)</i> |
| 21-AUG-2020 | | LNMD. 07-AUG-2020 |
| Delete | depth of 1 fathom, 4 feet (See Chart No. 1, I10) This notice affects Electronic Navigational Chart: CA276286 | 45°45'10.9"N 063°18'18.8"W <i>DFO(6308867-01)</i> |

MONTHLY NOTICES TO MARINERS
EASTERN EDITION 08/2020
SECTION 2 – CHART CORRECTIONS

| | | |
|--------|---|--|
| Add | depth of 1 fathom (See Chart No. 1, I10) This notice affects Electronic Navigational Chart: CA276286 | 45°45'22.5"N 063°18'28.4"W <i>DFO(6308867-02)</i> |
| Delete | depth of 2 fathoms, 2 feet (See Chart No. 1, I10) This notice affects Electronic Navigational Chart: CA276286 | 45°46'25.3"N 063°16'51.9"W <i>DFO(6308867-03)</i> |
| Add | depth of 1 fathom, 4 feet (See Chart No. 1, I10) This notice affects Electronic Navigational Chart: CA276286 | 45°46'28.3"N 063°16'48.5"W <i>DFO(6308867-04)</i> |
| Delete | depth of 2 fathoms, 1 foot (See Chart No. 1, I10) This notice affects Electronic Navigational Chart: CA276286 | 45°45'40.6"N 063°18'08.7"W <i>DFO(6308867-05)</i> |
| Add | depth of 0 fathoms, 4 feet (See Chart No. 1, I10) This notice affects Electronic Navigational Chart: CA276286 | 45°45'59.2"N 063°18'04.2"W <i>DFO(6308867-06)</i> |
| Affix | patch Download Patch - ftp://ftp.dfo-mpo.gc.ca/patches/4013_6308867_7_202007160753.pdf | 45°52'00.0"N 061°17'00.0"W <i>DFO(6308867-07)</i> |
| Delete | depth of 2 fathoms, 3 feet (See Chart No. 1, I10) This notice affects Electronic Navigational Chart: CA276286 | 45°46'59.9"N 063°15'15.5"W <i>DFO(6308867-08)</i> |
| Add | depth of 2 fathoms, 1 foot (See Chart No. 1, I10) This notice affects Electronic Navigational Chart: CA276286 | 45°46'58.3"N 063°14'55.2"W <i>DFO(6308867-09)</i> |
| Delete | depth of 2 fathoms, 5 feet (See Chart No. 1, I10) This notice affects Electronic Navigational Chart: CA276286 | 45°50'33.0"N 063°09'06.0"W <i>DFO(6308868-01)</i> |
| Add | depth of 1 fathom, 3 feet (See Chart No. 1, I10) This notice affects Electronic Navigational Chart: CA276286 | 45°50'16.8"N 063°08'31.4"W <i>DFO(6308868-02)</i> |
| Delete | depth of 3 fathoms, 1 foot (See Chart No. 1, I10) This notice affects Electronic Navigational Chart: CA276286 | 45°46'08.0"N 063°08'05.0"W <i>DFO(6308869-01)</i> |
| Add | depth of 2 fathoms, 4 feet (See Chart No. 1, I10) This notice affects Electronic Navigational Chart: CA276286 | 45°46'11.5"N 063°07'52.3"W <i>DFO(6308869-02)</i> |

MONTHLY NOTICES TO MARINERS
EASTERN EDITION 08/2020
SECTION 2 – CHART CORRECTIONS

4015 - Sydney to / à Saint-Pierre - New Edition - 28-MAR-2003 - NAD 1983

07-AUG-2020

LNM/D. 17-JUL-2020

Amend FI 20s53ft17M to read FI 21s53ft17M against light 45°45'57.0"N 060°06'46.0"W
(See Chart No. 1, P16)
This notice affects Electronic Navigational Chart: CA276204, CA376295
(G2020067) LL(750) DFO(6309032-01)

4023 - Northumberland Strait / Détroit de Northumberland - New Edition - 27-DEC-2002 - NAD 1983

07-AUG-2020

LNM/D. 05-JUN-2020

Delete red starboard hand lighted pillar buoy FI R 46°23'30.0"N 064°33'08.0"W
(See Chart No. 1, Qf)
This notice affects Electronic Navigational Chart: CA276286, CA376076, CA476128
(G2020048) LL(1115) DFO(6309014-01)

Add red and white fairway lighted conical buoy Mo(A) 46°23'19.7"N 064°32'38.5"W
(See Chart No. 1, Qh)
This notice affects Electronic Navigational Chart: CA276286, CA376076, CA476128
(G2020049) LL(1115.1) DFO(6309015-01)

Delete red starboard hand lighted pillar buoy FI R 46°22'24.0"N 064°34'08.0"W
(See Chart No. 1, Qf)
This notice affects Electronic Navigational Chart: CA276286, CA376076, CA476128
(G2020038) LL(1114.2) DFO(6309129-01)

Add red starboard hand lighted conical buoy FI R 46°22'28.4"N 064°34'00.9"W
(See Chart No. 1, Qf)
This notice affects Electronic Navigational Chart: CA276286, CA376076, CA476128
(G2020038) LL(1113.04) DFO(6309129-02)

21-AUG-2020

LNM/D. 07-AUG-2020

Delete depth of 1 fathom, 4 feet 45°45'10.9"N 063°18'18.8"W
(See Chart No. 1, I10)
This notice affects Electronic Navigational Chart: CA276286
DFO(6308867-01)

Add depth of 1 fathom 45°45'22.5"N 063°18'28.4"W
(See Chart No. 1, I10)
This notice affects Electronic Navigational Chart: CA276286
DFO(6308867-02)

Delete depth of 2 fathoms, 2 feet 45°46'28.3"N 063°16'48.5"W
(See Chart No. 1, I10)
This notice affects Electronic Navigational Chart: CA276286
DFO(6308867-03)

Add depth of 1 fathom, 4 feet 45°46'28.3"N 063°16'48.5"W
(See Chart No. 1, I10)
This notice affects Electronic Navigational Chart: CA276286
DFO(6308867-04)

Delete depth of 2 fathoms, 1 foot 45°45'44.6"N 063°18'04.2"W
(See Chart No. 1, I10)
This notice affects Electronic Navigational Chart: CA276286
DFO(6308867-05)

MONTHLY NOTICES TO MARINERS
EASTERN EDITION 08/2020
SECTION 2 – CHART CORRECTIONS

| | | | |
|--------|--|----------------------------|------------------------|
| Add | depth of 0 fathoms, 4 feet (See Chart No. 1, I10) This notice affects Electronic Navigational Chart: CA276286 | 45°45'59.2"N 063°18'04.2"W | <i>DFO(6308867-06)</i> |
| Delete | depth of 2 fathoms, 3 feet (See Chart No. 1, I10) This notice affects Electronic Navigational Chart: CA276286 | 45°47'04.7"N 063°15'14.0"W | <i>DFO(6308867-08)</i> |
| Add | depth of 2 fathoms, 1 foot (See Chart No. 1, I10) This notice affects Electronic Navigational Chart: CA276286 | 45°46'58.3"N 063°14'55.2"W | <i>DFO(6308867-09)</i> |
| Affix | patch Download Patch - ftp://ftp.dfo-mpo.gc.ca/patches/4023_6308867_10_202007160757.pdf This notice affects Electronic Navigational Chart: CA276286 | 46°25'00.0"N 065°08'00.0"W | <i>DFO(6308867-10)</i> |
| Delete | depth of 2 fathoms, 5 feet (See Chart No. 1, I10) This notice affects Electronic Navigational Chart: CA276286 | 45°50'30.0"N 063°09'00.0"W | <i>DFO(6308868-01)</i> |
| Add | depth of 1 fathom, 3 feet (See Chart No. 1, I10) This notice affects Electronic Navigational Chart: CA276286 | 45°50'16.8"N 063°08'31.4"W | <i>DFO(6308868-02)</i> |
| Delete | depth of 3 fathoms, 1 foot (See Chart No. 1, I10) This notice affects Electronic Navigational Chart: CA276286 | 45°46'10.0"N 063°08'00.0"W | <i>DFO(6308869-01)</i> |
| Add | depth of 2 fathoms, 4 feet (See Chart No. 1, I10) This notice affects Electronic Navigational Chart: CA276286 | 45°46'11.5"N 063°07'52.3"W | <i>DFO(6308869-02)</i> |

4045 - Sable Island Bank / Banc de l'Île de Sable to / au St. Pierre Bank / Banc de Saint-Pierre - New Edition - 10-OCT-2003 - NAD 1983

| | | | |
|-------|--|----------------------------|---|
| | | | LNM/D. 09-AUG-2019 |
| Amend | FI 20s16m17M to read FI 21s16m17M against light (See Chart No. 1, P16) This notice affects Electronic Navigational Chart: CA276204, CA376295 | 45°45'59.0"N 060°06'46.4"W | <i>(G2020067) LL(750) DFO(6309032-01)</i> |

4049 - Grand Bank, Northern Portion / Grand Banc, Partie Nord to / à Flemish Pass / Passe Flamande - New Edition - 19-MAY-1995 - NAD 1983

| | | | |
|--------|--|----------------------------|------------------------|
| | | | LNM/D. 15-NOV-2019 |
| Delete | subsurface Ocean Data Acquisition System ODAS/SADO with unknown depth (See Chart No. 1, L25) This notice affects Electronic Navigational Chart: CA176030, CA276101 | 47°30'46.3"N 047°21'26.5"W | <i>DFO(6309106-02)</i> |

MONTHLY NOTICES TO MARINERS
EASTERN EDITION 08/2020
SECTION 2 – CHART CORRECTIONS

Delete subsurface Ocean Data Acquisition System ODAS/SADO with unknown depth (See Chart No. 1, L25) 47°16'03.4"N 047°07'06.0"W
This notice affects Electronic Navigational Chart: CA176030, CA276101
DFO(6309106-03)

4374 - Red Point to / à Guyon Island - New Edition - 08-NOV-2002 - NAD 1983

07-AUG-2020 LNM/D. 10-MAR-2017
Amend FI 20s53ft17M to read FI 21s53ft17M against light 45°46'00.0"N 060°06'46.4"W
(See Chart No. 1, P16)
This notice affects Electronic Navigational Chart: CA276204, CA376295
(G2020067) LL(750) DFO(6309032-01)

4375 - Guyon Island to / à Flint Island - New Edition - 11-OCT-2002 - NAD 1983

07-AUG-2020 LNM/D. 21-DEC-2018
Amend FI 20s53ft17M to read FI 21s53ft17M against light 45°46'00.5"N 060°06'46.4"W
(See Chart No. 1, P16)
This notice affects Electronic Navigational Chart: CA276204, CA376295
(G2020067) LL(750) DFO(6309032-01)

4405 - Pictou Island to / aux Tryon Shoals - New Edition - 21-FEB-2003 - NAD 1983

21-AUG-2020 LNMD. 19-JUN-2020
Affix patch 45°50'00.0"N 063°10'00.0"W
Download Patch - ftp://ftp.dfo-mpo.gc.ca/patches/4405_6308870_1_202007130739.pdf
This notice affects Electronic Navigational Chart: CA376161
DFO(6308870-01)

Affix patch 45°46'00.0"N 063°00'00.0"W
Download Patch - ftp://ftp.dfo-mpo.gc.ca/patches/4405_6308870_2_202007160801.pdf
This notice affects Electronic Navigational Chart: CA376161
DFO(6308870-02)

4406 - Tryon Shoals to / à Cape Egmont - New Edition - 27-FEB-1998 - NAD 1983

07-AUG-2020 LNM/D. 24-JUL-2020
Reposition red starboard hand lighted pillar buoy QR, marked DG2 from 46°24'06.2"N 064°08'30.7"W
(See Chart No. 1, Qf) to 46°24'09.8"N 064°08'46.5"W
This notice affects Electronic Navigational Chart: CA376076
(G2020079) LL(1024.5) DFO(6309047-01)

4467 - New London Bay - New Edition - 10-JAN-2003 - NAD 1983

14-AUG-2020 LNM/D. 11-OCT-2019
Replace green port hand lighted can buoy FIG, marked JN15 with 46°28'55.9"N 063°27'29.8"W
green port hand lighted pillar buoy FI G, marked JN17
(See Chart No. 1, Qg)
(G2020047) LL(1060.9) DFO(6309067-01)

28-AUG-2020 LNM/D. 14-AUG-2020
Delete green port hand lighted can buoy QG, marked JN7 46°29'51.1"N 063°27'46.8"W
(See Chart No. 1, Qg)
(G2020046) LL(1060.8) DFO(6309066-01)

MONTHLY NOTICES TO MARINERS
EASTERN EDITION 08/2020
SECTION 2 – CHART CORRECTIONS

Add green port hand lighted pillar buoy Q G, marked JN15 46°29'50.7"N 063°27'46.8"W
(See Chart No. 1, Qg)
(G2020046) LL(1060.8) DFO(6309066-02)

4622 - Cape St Mary's to / à Argentinia Harbour and / et Jude Island - New Edition - 20-DEC-2019 - NAD 1983
21-AUG-2020 LNM/D. 10-APR-2020
Add wreck, least depth unknown with legend 'Rep (2020)' 47°08'46.8"N 054°35'06.0"W
(See Chart No. 1, K29, I3.2)
This notice affects Electronic Navigational Chart: CA376173
DFO(6309143-01)

4820 - Cape Freels to / à Exploits Islands - New Chart - 01-JUL-2005 - NAD 1983
07-AUG-2020 LNM/D. 03-JUL-2020
Amend QG to read FI G against light 49°38'40.0"N 054°46'18.0"W
(See Chart No. 1, P16)
This notice affects Electronic Navigational Chart: CA376655, CA476804
(N2020044) LL(361) DFO(6309011-01)

4821 - White Bay and / et Notre Dame Bay - New Chart - 23-APR-2004 - NAD 1983
07-AUG-2020 LNM/D. 24-JUL-2020
Amend QG to read FI G against light 49°38'40.0"N 054°46'18.0"W
(See Chart No. 1, P16)
This notice affects Electronic Navigational Chart: CA376655, CA476804
(N2020044) LL(361) DFO(6309011-01)

4863 - Bacalhao Island to / à Black Island - New Edition - 30-NOV-2001 - NAD 1983
07-AUG-2020 LNM/D. 12-APR-2019
Amend QG to read FI G against light 49°38'39.8"N 054°46'18.5"W
(See Chart No. 1, P16)
This notice affects Electronic Navigational Chart: CA376655, CA476804
(N2020044) LL(361) DFO(6309011-01)

4865 - Approaches to / Approches à Lewisporte and / et Loon Bay - New Edition - 27-MAY-2005 - NAD 1983
07-AUG-2020 LNM/D. 12-APR-2019
Delete red starboard hand lighted spar buoy FI R, marked DLW2 49°17'54.1"N 055°00'22.2"W
(See Chart No. 1, Qf)
This notice affects Electronic Navigational Chart: CA476168
(N2020064) LL(352.4) DFO(6309046-01)

Add yellow and black South cardinal lighted spar buoy Q(6)+LFI 15s, 49°17'46.1"N 055°00'22.4"W
marked DLW
(See Chart No. 1, Q130.3)
This notice affects Electronic Navigational Chart: CA476168
(N2020064) LL(352.4) DFO(6309046-02)

4886 - Twillingate Harbours - New Chart - 26-DEC-1997 - NAD 1983
07-AUG-2020 LNM/D. 22-MAR-2019
Amend QG to read FI G against light 49°38'40.0"N 054°46'18.0"W
(See Chart No. 1, P16)
This notice affects Electronic Navigational Chart: CA376655, CA476804
(N2020044) LL(361) DFO(6309011-01)

MONTHLY NOTICES TO MARINERS
EASTERN EDITION 08/2020
SECTION 2 – CHART CORRECTIONS

4905 - Cape Tormentine à / to West Point - New Edition - 29-DEC-2000 - NAD 1983

07-AUG-2020

LNM/D. 06-MAR-2020

- | | | |
|------------|--|--|
| Delete | red starboard hand lighted pillar buoy FI R, marked XT2 (See Chart No. 1, Qf) This notice affects Electronic Navigational Chart: CA276286, CA376076, CA476128 <i>(G2020048) LL(1115) DFO(6309014-01)</i> | 46°23'31.0"N 064°33'08.0"W |
| Add | red and white fairway lighted conical buoy Mo(A), marked XT (See Chart No. 1, Qh) This notice affects Electronic Navigational Chart: CA276286, CA376076, CA476128 <i>(G2020049) LL(1115.1) DFO(6309015-01)</i> | 46°23'19.7"N 064°32'38.5"W |
| Delete | front range/leading light 2 Lts F R (See Chart No. 1, P20.2) This notice affects Electronic Navigational Chart: CA376076, CA476128 <i>(G2020070) LL(1107) DFO(6309044-01)</i> | 46°14'28.3"N 064°30'40.6"W |
| Delete | rear range/leading light with leading line (See Chart No. 1, P20.2) This notice affects Electronic Navigational Chart: CA376076, CA476128 <i>(G2020071) LL(1108) DFO(6309045-01)</i> | 46°14'22.5"N 064°30'42.0"W |
| Reposition | red starboard hand lighted pillar buoy Q R, marked DG2 (See Chart No. 1, Qf) This notice affects Electronic Navigational Chart: CA376076 <i>(G2020079) LL(1024.5) DFO(6309047-01)</i> | from 46°24'06.3"N 064°08'29.8"W to 46°24'09.8"N 064°08'46.5"W |
| Delete | red starboard hand lighted pillar buoy FI R, marked XT4 (See Chart No. 1, Qf) This notice affects Electronic Navigational Chart: CA276286, CA376076, CA476128 <i>(G2020038) LL(1114.2) DFO(6309129-01)</i> | 46°22'24.0"N 064°34'08.0"W |
| Add | red starboard hand lighted conical buoy FI R, marked XT4 (See Chart No. 1, Qf) This notice affects Electronic Navigational Chart: CA276286, CA376076, CA476128 <i>(G2020038) LL(1113.04) DFO(6309129-02)</i> | 46°22'28.4"N 064°34'01.0"W |

4909 - Cocagne et / and Shediac - New Chart - 17-JUN-1988 - NAD 1983

07-AUG-2020

LNM/D. 25-OCT-2019

- | | | |
|--------|--|----------------------------|
| Delete | red starboard hand lighted pillar buoy FIR, marked XT2 (See Chart No. 1, Qf) This notice affects Electronic Navigational Chart: CA276286, CA376076, CA476128 <i>(G2020048) LL(1115) DFO(6309014-01)</i> | 46°23'30.0"N 064°33'09.3"W |
| Add | red and white fairway lighted conical buoy Mo(A), marked XT (See Chart No. 1, Qh) This notice affects Electronic Navigational Chart: CA276286, CA376076, CA476128 <i>(G2020049) LL(1115.1) DFO(6309015-01)</i> | 46°23'19.7"N 064°32'38.5"W |
| Add | Chenal balisé/Channel Buoyed This notice affects Electronic Navigational Chart: CA476128 <i>DFO(6309015-02)</i> | 46°22'06.7"N 064°34'19.7"W |
| Delete | green port hand can buoy, marked XT7 (See Chart No. 1, Qg) <i>DFO(6309015-03)</i> | 46°21'59.0"N 064°34'23.0"W |

MONTHLY NOTICES TO MARINERS
EASTERN EDITION 08/2020
SECTION 2 – CHART CORRECTIONS

| | | |
|--------|---|---|
| Delete | red starboard hand conical buoy, marked XT6 (See Chart No. 1, Qf) | 46°21'57.9"N 064°34'50.8"W <i>DFO(6309015-04)</i> |
| Delete | green port hand can buoy, marked XT9 (See Chart No. 1, Qg) | 46°21'39.1"N 064°34'45.2"W <i>DFO(6309015-05)</i> |
| Delete | red starboard hand lighted pillar buoy FIR, marked XT8 (See Chart No. 1, Qf) | 46°21'39.9"N 064°35'13.2"W <i>DFO(6309015-06)</i> |
| Delete | green port hand can buoy, marked XT11 (See Chart No. 1, Qg) | 46°21'18.0"N 064°35'09.5"W <i>DFO(6309015-07)</i> |
| Delete | red starboard hand conical buoy, marked XT10 (See Chart No. 1, Qf) | 46°21'18.4"N 064°35'38.5"W <i>DFO(6309015-08)</i> |
| Delete | green port hand lighted pillar buoy FIG, marked XT13 (See Chart No. 1, Qg) | 46°20'57.8"N 064°35'34.0"W <i>DFO(6309015-09)</i> |
| Delete | red starboard hand conical buoy, marked XT12 (See Chart No. 1, Qf) | 46°20'58.2"N 064°36'01.6"W <i>DFO(6309015-10)</i> |
| Amend | "Chenal marqué par des pieux/Channel Staked" to read "Chenal balisé/Channel Buoyed" This notice affects Electronic Navigational Chart: CA476128 | 46°20'42.0"N 064°36'12.6"W <i>DFO(6309015-11)</i> |
| Delete | red starboard hand lighted conical buoy FI R, marked XT18 (See Chart No. 1, Qf) | 46°20'19.7"N 064°36'21.8"W <i>DFO(6309015-12)</i> |
| Delete | red starboard hand lighted pillar buoy Q R, marked XT22 (See Chart No. 1, Qf) | 46°19'52.3"N 064°37'17.0"W <i>DFO(6309015-13)</i> |
| Delete | front range/leading light FR8m (See Chart No. 1, P20.2) This notice affects Electronic Navigational Chart: CA376076, CA476128 | 46°14'27.8"N 064°30'41.6"W <i>(G2020070) LL(1107) DFO(6309044-01)</i> |
| Delete | rear range/leading light F R 14m with leading line (See Chart No. 1, P20.2) This notice affects Electronic Navigational Chart: CA376076, CA476128 | 46°14'21.8"N 064°30'43.2"W <i>(G2020071) LL(1108) DFO(6309045-01)</i> |
| Add | red starboard hand lighted spar buoy Q R, marked XT48 (See Chart No. 1, Qf) This notice affects Electronic Navigational Chart: CA476128 | 46°19'53.8"N 064°37'15.1"W <i>(G2020115) LL(1113.48) DFO(6309086-01)</i> |

MONTHLY NOTICES TO MARINERS
EASTERN EDITION 08/2020
SECTION 2 – CHART CORRECTIONS

Delete red starboard hand lighted pillar buoy FIR, marked XT4 46°22'22.9"N 064°34'08.6"W
(See Chart No. 1, Qf)
This notice affects Electronic Navigational Chart: CA276286, CA376076, CA476128
(G2020038) LL(1114.2) DFO(6309129-01)

Add red starboard hand lighted conical buoy FI R, marked XT4 46°22'28.4"N 064°34'00.9"W
(See Chart No. 1, Qf)
This notice affects Electronic Navigational Chart: CA276286, CA376076, CA476128
(G2020038) LL(1113.04) DFO(6309129-02)

4909 - Richibucto Harbour - New Chart - 17-JUN-1988 - NAD 1983
07-AUG-2020

LNMD. 25-OCT-2019

Delete red starboard hand lighted pillar buoy QR, marked Q10 46°42'32.5"N 064°45'18.5"W
(See Chart No. 1, Qf)
This notice affects Electronic Navigational Chart: CA476131
(G2020065) LL(1133.6) DFO(6309031-01)

Add red starboard hand lighted conical buoy Q R, marked Q10 46°42'27.7"N 064°45'15.7"W
(See Chart No. 1, Qf)
This notice affects Electronic Navigational Chart: CA476131
(G2020065) LL(1133.6) DFO(6309031-02)

Delete green port hand lighted pillar buoy Q G, marked QA13 46°42'50.7"N 064°52'21.7"W
(See Chart No. 1, Qg)
This notice affects Electronic Navigational Chart: CA476131
(G2020088) LL(1149.6) DFO(6309062-01)

Add green port hand lighted spar buoy Q G, marked QA13 46°43'03.0"N 064°51'57.9"W
(See Chart No. 1, Qg)
This notice affects Electronic Navigational Chart: CA476131
(G2020088) LL(1149.6) DFO(6309062-02)

Delete green port hand lighted pillar buoy Q G, marked QA11 46°43'04.0"N 064°51'58.3"W
(See Chart No. 1, Qg)
This notice affects Electronic Navigational Chart: CA476131
(G2020087) LL(1149.3) DFO(6309068-01)

Add green port hand lighted spar buoy Q G, marked QA11 46°42'42.2"N 064°51'36.3"W
(See Chart No. 1, Qg)
This notice affects Electronic Navigational Chart: CA476131
(G2020087) LL(1149.3) DFO(6309068-02)

4911 - Entrée à / Entrance to Miramichi River - New Edition - 27-JAN-2006 - NAD 1983
28-AUG-2020

LNMD. 05-JUN-2020

Amend red starboard hand lighted spar buoy Q R, marked ME8 to read 47°08'48.1"N 064°59'25.0"W
red starboard hand lighted spar buoy FI R, marked ME8
(See Chart No. 1, Qf)
This notice affects Electronic Navigational Chart: CA476133
(G2020142) LL(1175) DFO(6309126-01)

4935 - Murray Harbour to/à Boughton Bay - New Chart - 18-JAN-2019 - NAD 1983
07-AUG-2020

LNMD. 13-SEP-2019

Reposition red starboard hand lighted spar buoy FI R, marked NH38 from 46°10'00.6"N 062°37'57.6"W
(See Chart No. 1, Qf) to 46°09'58.9"N 062°37'49.9"W
This notice affects Electronic Navigational Chart: CA476490
(G2020080) LL(957.7) DFO(6309048-01)

MONTHLY NOTICES TO MARINERS
EASTERN EDITION 08/2020
SECTION 2 – CHART CORRECTIONS

14-AUG-2020

LNMD. 07-AUG-2020

Reposition green port hand spar buoy, marked NE3
(See Chart No. 1, Qg)
This notice affects Electronic Navigational Chart: CA476490
from 46°15'02.6"N 062°24'18.4"W
to 46°15'04.7"N 062°24'22.3"W
(G2020091) DFO(6309069-01)

5165 - Epinette Point to/à Terrington Basin - New Chart - 28-FEB-2020 - NAD 1983

07-AUG-2020

Add green port hand lighted spar buoy FI G, marked HN3
(See Chart No. 1, Qg)
This notice affects Electronic Navigational Chart: CA376739
53°31'19.7"N 060°08'02.7"W
(N2020063) LL(298.3) DFO(6309146-01)

6211 - Big Traverse Bay - New Edition - 28-FEB-2020 - NAD 1983

14-AUG-2020

Amend M78 to read M76 against red starboard hand spar buoy
(See Chart No. 1, Qf)
49°19'24.0"N 094°46'24.0"W
(D2020019) DFO(6604656-01)

6258 - Montreal Point to/à Kettle Island - Sheet/Feuille 1 - New Chart - 30-DEC-1988 - NAD 1983

14-AUG-2020

LNMD. 29-DEC-2017

Reposition red starboard hand spar buoy, marked C6
(See Chart No. 1, Qf)
from 53°40'40.7"N 097°52'20.0"W
to 53°40'38.8"N 097°52'30.8"W
(A2020008) DFO(6604664-01)

Reposition green port hand spar buoy, marked C7
(See Chart No. 1, Qg)
from 53°40'35.6"N 097°52'26.3"W
to 53°40'40.1"N 097°52'28.3"W
(A2020009) DFO(6604670-01)

Delete recommended track
(See Chart No. 1, M4)
between 53°40'41.5"N 097°52'18.7"W
and 53°40'37.1"N 097°52'31.4"W
DFO(6604670-02)

8012 - Flemish Pass / Passe Flamande - New Edition - 11-OCT-2002 - NAD 1983

14-AUG-2020

LNMD. 15-NOV-2019

Delete subsurface Ocean Data Acquisition System ODAS/SADO with
unknown depth
(See Chart No. 1, L25)
This notice affects Electronic Navigational Chart: CA176030, CA276101
47°30'46.3"N 047°21'26.5"W
DFO(6309106-02)

Delete subsurface Ocean Data Acquisition System ODAS/SADO with
unknown depth
(See Chart No. 1, L25)
This notice affects Electronic Navigational Chart: CA176030, CA276101
47°16'03.4"N 047°07'06.0"W
DFO(6309106-03)

Delete subsurface Ocean Data Acquisition System ODAS/SADO with
unknown depth
(See Chart No. 1, L25)
This notice affects Electronic Navigational Chart: CA176030
47°01'23.1"N 046°52'43.4"W
DFO(6309106-04)

MONTHLY NOTICES TO MARINERS
EASTERN EDITION 08/2020
SECTION 3 – RADIO AIDS TO MARINE NAVIGATION CORRECTIONS

NO CORRECTIONS FOR THIS SECTION.

SECTION 4 – SAILING DIRECTIONS AND SMALL CRAFT GUIDE CORRECTIONS

ATL 108 — Gulf of St. Lawrence (Southwest Portion), First Edition, 2006 —

Chapter 3 — Paragraph 65

Delete: 1.2 m

Replace by: 0.3 m

(A2020-008.10)

Chapter 3 — Paragraph 71, after “**Middleground Shoal**,”

Delete: at a depth of 1.8 m

Replace by: with a least depth of 1.5 m

(A2020-008.11)

Chapter 3 — Paragraph 71, after “with depths of”

Delete: 0.9

Replace by: 0.2

(A2020-008.12)

Chapter 3 — Paragraph 74

Delete: a least depth of 1.5 m in the approaches to the wharf and

(A2020-008.13)

Chapter 3 — Paragraph 76

Delete: 3.4 m

Replace by: 3.1 m

(A2020-008.14)

Chapter 3 — Paragraph 133, after “from the NE end of the island.”

Insert: The spit is marked by east cardinal light **buoy** CJB (983.5).

The unlighted south cardinal **buoy** CJA is moored to the south of St. Peters Island.

(A2020-008.15)

CEN 301 — St. Lawrence River — Montréal to Kingston, Second Edition, 2010 —

Chapter 1 — After paragraph 76

Insert: 76.1 When outflows from Pointe-des-Cascades dam are 1,850 m³/s or greater, there is an increase in cross currents downstream of Beauharnois Lock 3 and meets are not permitted from the end of the wall at Beauharnois Lock 3 to 1000 m downstream of the end of the wall.

(Q2020-033.1)

Chapter 1 — Adjacent to paragraph 76.1, add a caution pictograph.

(Q2020-033.2)

MONTHLY NOTICES TO MARINERS
EASTERN EDITION 08/2020

SECTION 5 – LIST OF LIGHTS, BUOYS AND FOG SIGNALS CORRECTIONS

The amendments are highlighted and deletions are crossed-out. For general and region-specific information on the List of Lights, click on the following links: [Newfoundland and Labrador Coast](#), [Atlantic Coast](#), [Inland Waters](#) and [Pacific Coast](#).

| No. | Name | Position ----- Latitude N. Longitude W. | Light Characteristics | Focal Height in m. above water | Nomi- nal Range | Description ----- Height in meters above ground | Remarks ----- Fog Signals |
|-----|------|--|--------------------------|--|-----------------------|--|---------------------------------|
|-----|------|--|--------------------------|--|-----------------------|--|---------------------------------|

NEWFOUNDLAND AND LABRADOR COAST

STRAIT OF BELLE ISLE (LL 211 – 234)

| | | | | | | | |
|---------------------------|------------------------|---------------------------|---------|-----|---|--------------------------|--|
| 219.5 H0137 | Raleigh Wharf Light | 51 33 50.3 055 43 57.4 | FI G 4s | 4.5 | 2 | Cylindrical Mast. 2.4 | Flash 1 s; eclipse 3 s. Seasonal. Chart:4509 Edn 08/20 (N20-068, 075) |
|---------------------------|------------------------|---------------------------|---------|-----|---|--------------------------|--|

NEWFOUNDLAND AND LABRADOR COAST (LL 269.99 – 325.23)

| | | | | | | | |
|-------|------------------------------------|---------------------------|---------|-------|-------|---------------------------|--|
| 298.3 | North West River light buoy HN3 | 53 31 19.7 060 08 02.7 | FI G 4s | | | Green spar, marked "HN3". | Seasonal. Chart:5165 Edn 08/20 (N20-063) |
|-------|------------------------------------|---------------------------|---------|-------|-------|---------------------------|--|

NOTRE DAME BAY (LL 326 – 346.4, 354 – 395)

| | | | | | | | |
|-------------------------|--------------------|--|---------|------|---|---|---|
| 361 H0645 | Shoal Tickle Light | On Tickle Point. 49 38 40.0 054 46 18.1 | FI G 4s | 14.6 | 4 | Square skeleton tower, green and white rectangular daymark. 5.4 | Flash 1 s; eclipse 3 s. Seasonal. Chart:4886 Edn 08/20 (N20-044) |
| 383 H0617 | Middle Rock Light | On Middle Rock, Northeast Coast. 49 43 58.2 054 10 05.8 | FI R 4s | 5.5 | 4 | Square skeleton tower, red and white rectangular daymark on 3 sides. 4.3 | Flash 1 s; eclipse 3 s. Seasonal. Chart:4861 Edn 08/20 (N20-034) |

BAY OF EXPLOITS (LL 347 – 353.9)

| | | | | | | | |
|-------|---|---------------------------|--------------|-------|-------|-------|---|
| 352.4 | Jobs Island South Cardinal light buoy DLW | 49 17 46.1 055 00 22.4 | Q(6) +LFI | W 15s | | | Yellow and black spar, marked "DLW". Year round. Chart:4865 Edn 08/20 (N20-064) |
|-------|---|---------------------------|--------------|-------|-------|-------|---|

ATLANTIC COAST

CAPE BRETON ISLAND, N.S. (LL 704.85 – 882.5)

| | | | | | | | |
|-------------------------|--------------|---|----------|------|----|--|---|
| 750 H3360 | Guyon Island | On island. 45 45 57.3 060 06 45.7 | FI W 21s | 12.8 | 17 | White octagonal tower with red top. 12.8 | Flash 1 s; eclipse 20 s. Emergency light. Year round. Chart:4374 Edn 08/20 (G20-067, 176) |
|-------------------------|--------------|---|----------|------|----|--|---|

GULF OF ST. LAWRENCE (LL 883.2 – 940.3, 1169.1 – 1426, 1477.5 – 1584)

| | | | | | | | |
|--------|--------------------------------|---------------------------|---------|-------|-------|--------------------------------|---|
| 1173.8 | Spit Shoal light buoy M15/3 | 47 08 29.5 065 00 16.7 | FI G 4s | | | Green spar, marked "M15/3". | Seasonal (in place year round). Chart:N/A Edn 08/20 (G20-084) |
|--------|--------------------------------|---------------------------|---------|-------|-------|--------------------------------|---|

MONTHLY NOTICES TO MARINERS
EASTERN EDITION 08/2020

SECTION 5 – LIST OF LIGHTS, BUOYS AND FOG SIGNALS CORRECTIONS

| No. | Name | Position ----- Latitude N. Longitude W. | Light Characteristics | Focal Height in m. above water | Nomi- nal Range | Description ----- Height in meters above ground | Remarks ----- Fog Signals |
|---|---|--|--------------------------|--|-----------------------|--|--|
| 1175 | Portage Island Channel light buoy ME8 | W. edge, Miramichi Bar. 47 08 48.1 064 59 25.0 | Fl R 4s | | | Red spar, marked "ME8". | Seasonal. Chart:4911 Edn 08/20 (G20-142) |
| 1180.5 | Miramichi Bar light buoy M19 | 47 08 37.5 065 02 51.0 | Fl G 4s | | | Green spar, marked "M19". | Seasonal (in place year round). Chart:N/A Edn 08/20 (G20-089) |
| 1248.11 | Shippegan Gully light buoy TJ4 | 47 42 48.6 064 39 34.9 | Fl R 4s | | | Red spar, marked "TJ4". | Operates 24 h. Seasonal. Chart:N/A Edn 08/20 (G20-122) |
| 1248.12 | Shippegan South Gully light buoy TJ5 | 47 42 46.7 064 39 46.7 | Q G 1s | | | Green spar, marked "TJ5". | Buoy may be repositioned due to shifting channel. Seasonal. Chart:N/A Edn 08/20 (G20-123) |
| 1262.12 | Fox Dens Gully light buoy TK5 | Inside gully entrance. 47 53 09.1 064 29 55.0 | Fl G 4s | | | Green, marked "TK5". | Seasonal. Chart:N/A Edn 08/20 (G20-146) |
| 1262.6 | Fox Dens Gully light buoy TK3 | At gully entrance. 47 53 10.0 064 29 48.6 | Fl G 4s | | | Green spar, marked "TK3". | Buoy may be repositioned due to shifting channel. Seasonal. Chart:N/A Edn 08/20 (G20-145) |
| PRINCE EDWARD ISLAND (LL 942 – 1084.7) | | | | | | | |
| 957.7 | Montague River light buoy NH38 | 46 09 58.9 062 37 49.9 | Fl R 4s | | | Red spar, marked "NH38". | Seasonal. Chart:4935 Edn 08/20 (G20-080) |
| 1024.5 | Fishing Cove light buoy DG2 | 46 24 09.8 064 08 46.5 | Q R 1s | | | Red, marked "DG2". | Seasonal. Chart:4406 Edn 08/20 (G20-079) |
| 1040.2 H1170.3 | Naufrage Harbour East Breakwater Light | On outer end of E. breakwater. 46 28 08.2 062 25 00.3 | Fl G 4s | 5.0 | 4 | Pipe swing pole, green- white-black square daymark. 3.6 | Flash 1 s; eclipse 3 s. Seasonal. Chart:4023 Edn 08/20 (G20-152) |
| 1060.8 | Stanley Bridge Channel light buoy JN15 | 46 29 50.7 063 27 46.8 | Q G 1s | | | Green boat type, marked "JN15". | Buoy may be repositioned due to shifting channel. Seasonal. Chart:4467 Edn 08/20 (G20-046) |
| 1060.9 | Stanley Bridge Channel light buoy JN17 | 46 28 55.7 063 27 29.8 | Fl G 4s | | | Green boat type, marked "JN17". | Buoy may be repositioned due to shifting channel. Seasonal. Chart:4467 Edn 08/20 (G20-047) |

MONTHLY NOTICES TO MARINERS
EASTERN EDITION 08/2020

SECTION 5 – LIST OF LIGHTS, BUOYS AND FOG SIGNALS CORRECTIONS

| No. | Name | Position ----- Latitude N. Longitude W. | Light Characteristics | Focal Height in m. above water | Nomi- nal Range | Description ----- Height in meters above ground | Remarks ----- Fog Signals |
|---|---|--|--------------------------|--|-----------------------|--|--|
| 1084.7 H1078 | Seacow Pond South Breakwater Light | On outer end of S. breakwater. 47 01 45.6 063 59 22.0 | Fl G 3s | 6.5 | 5 | Pipe swing pole, green and white square daymark. 4.6 | Flash 1 s; eclipse 2 s. Seasonal. Chart:4023 Edn 08/20 (G20-125) |
| NORTHUMBERLAND STRAIT (LL 1085 – 1165.9) | | | | | | | |
| 1107 H1328 | Pointe-du-Chêne range | | | | | | Delete from list. |
| 1108 H1328.1 | | | | | | | Delete from list. Chart:4909 Edn 08/20 (G20-070, 071) |
| 1113.04 1114.2 | Cocagne light buoy XT4 | 46 22 28.4 064 34 09.0 | Fl R 4s | | | Red, marked "XT4". | Buoy may be repositioned due to shifting channel. Seasonal. Chart:4909 Edn 08/20 (G20-038) |
| 1113.14 | Cocagne Harbour light buoy XT14 | 46 21 42.4 064 35 00.4 | Fl R 4s | | | Red, marked "XT14". | Seasonal. Chart:N/A Edn 08/20 (G20-052) |
| 1113.17 | Cocagne Harbour light buoy XT17 | 46 21 17.0 064 35 13.4 | Q G 1s | | | Green, marked "XT17". | Seasonal. Chart:N/A Edn 08/20 (G20-057) |
| 1113.22 1114.8 | Cocagne River light buoy XT22 | 46 20 21.7 064 36 25.8 | Fl R 4s | | | Red spar, marked "XT22". | Buoy may be repositioned due to shifting channel. Seasonal. Chart:N/A Edn 08/20 (G20-054) |
| 1113.48 | Cocagne River light buoy XT48 | 46 19 53.8 064 37 15.1 | Q R 1s | | | Red spar, marked "XT48". | Seasonal. Chart:4909 Edn 08/20 (G20-115) |
| 1114.24 | Cocagne light buoy XT8 | | | | | | Delete from list. Chart:4909 Edn 08/20 (G20-050) |
| 1114.3 | Cocagne light buoy XT13 | | | | | | Delete from list. Chart:4909 Edn 08/20 (G20-051) |
| 1114.5 | Cocagne light buoy XT18 | | | | | | Delete from list. Chart:4909 Edn 08/20 (G20-053) |
| 1115 | Cook Point (Pacquet Point) light buoy XT2 | | | | | | Delete from list. Chart:4909 Edn 08/20 (G20-048) |
| 1115.1 | Cocagne Harbour Fairway light buoy XT | 46 23 19.7 064 32 38.5 | Mo(A) W 6s | | | Red and white vertical stripes, marked "XT". | Seasonal. Chart:4909 Edn 08/20 (G20-049) |

MONTHLY NOTICES TO MARINERS
EASTERN EDITION 08/2020

SECTION 5 – LIST OF LIGHTS, BUOYS AND FOG SIGNALS CORRECTIONS

| No. | Name | Position ----- Latitude N. Longitude W. | Light Characteristics | Focal Height in m. above water | Nomi- nal Range | Description ----- Height in meters above ground | Remarks ----- Fog Signals |
|---|---|---|--------------------------|--|-----------------------|--|--|
| 1133.6 | Richibucto Gully Outer light buoy Q10 | N. side of channel. 46 42 25.1 064 45 10.0 | Q R 1s | | | Red, marked "Q10". | Buoy may be repositioned due to shifting channel. Seasonal. Chart:4909 Edn 08/20 (G20-065, 154) |
| 1149.3 | Pointe de Forgeron light buoy QA11 | 46 42 42.4 064 51 36.3 | Q G 1s | | | Green spar, marked "QA11". | Buoy may be repositioned due to shifting channel. Seasonal. Chart:4909 Edn 08/20 (G20-087, 094) |
| 1149.6 | Richibucto Northwest Branch light buoy QA13 | 46 43 03.0 064 51 58.0 | Q G 1s | | | Green spar, marked "QA13". | Buoy may be repositioned due to shifting channel. Seasonal. Chart:4909 Edn 08/20 (G20-088) |
| ST. LAWRENCE RIVER (LL 1584.5 – 1772, 1823.8 – 2185.7, 2273 – 2365.95) | | | | | | | |
| 1823.8 | Le Pilier de l'île Blanche light and bell buoy K59 | Chenal du Nord. 47 59 06.1 069 37 52.2 | FI G 4s | | | Green, marked "K59". | Seasonal. Chart:1320 Edn 08/20 (Q20-083) |
| 1830 | Passe de l'île aux Lièvres Fairway light and bell buoy ILIEV | Chenal du Sud. 47 47 14.2 069 47 10.3 | Mo(A) W 6s | | | Red and white vertical stripes, marked "ILIEV". | (Winter spar.) Year round. Chart:1234 Edn 08/20 (Q20-072) |
| 1841 | Haut-fond Morin bifurcation light and bell buoy HFMOR | At SW-end of sheaf. 47 36 08.1 070 02 16.2 | FI G (2+1) 6s | | | Green-red-green, marked "HFMOR". | (Winter spar.) Year round. Chart:1234 Edn 08/20 (Q20-073) |
| 1867 | Traverse de Saint- Roch light and bell buoy H68 | Chenal du Sud. 47 25 02.1 070 13 00.2 | FI R 4s | | | Red, marked "H68". | Seasonal. Chart:1233 Edn 08/20 (Q20-086) |
| 1870 | Lower Traverse de Saint-Roch light and bell buoy H79 | Chenal du Sud. 47 21 18.1 070 15 19.3 | FI G 4s | | | Green, marked "H79". | Seasonal. Chart:1233 Edn 08/20 (Q20-087) |
| 1893.6 | Anse aux Bardeaux light buoy K92 | Chenal du Nord. 47 09 35.4 070 39 40.5 | Q R 1s | | | Red spar, marked "K92". | Year round. Chart:1317 Edn 08/20 (Q20-88) |
| 1980 | Sainte-Croix-Est light buoy Q40 | Route Saint-Antoine. 46 39 19.4 071 38 39.6 | FI R 4s | | | Red spar, marked "Q40". | (Winter spar.) Year round. Chart:1315 Edn 08/20 (Q20-093) |
| 1983 | Banc des Écureuils light buoy Q46 | Route Saint-Antoine. 46 38 39.1 071 41 12.3 | FI R 4s | | | Red spar, marked "Q46". | (Winter spar.) Year round. Chart:1315 Edn 08/20 (Q20-094) |

MONTHLY NOTICES TO MARINERS
EASTERN EDITION 08/2020

SECTION 5 – LIST OF LIGHTS, BUOYS AND FOG SIGNALS CORRECTIONS

| No. | Name | Position ----- Latitude N. Longitude W. | Light Characteristics | Focal Height in m. above water | Nomi- nal Range | Description ----- Height in meters above ground | Remarks ----- Fog Signals |
|--------|--|--|--------------------------|--|-----------------------|--|---|
| 1989 | Brisants Sainte-Croix light buoy Q51 | Traverse de Cap-Santé. 46 38 41.2 071 45 03.8 | Fl G 4s | | | Green spar , marked "Q51". | (Winter spar.) Year round. Chart:1314 Edn 08/20 (Q20-089) |
| 1990 | Pointe aux Sables light buoy Q54 | Traverse de Cap-Santé. 46 39 15.9 071 46 17.1 | Fl R 4s | | | Red spar , marked "Q54". | (Winter spar.) Year round. Chart:1314 Edn 08/20 (Q20-096) |
| 2029 | Pointe Deschaillons light buoy D29 | Pouler Rayer. 46 33 50.9 072 06 11.2 | Fl G 4s | | | Green spar , marked "D29". | (Winter spar.) Year round. Chart:1314 Edn 08/20 (Q20-132) |
| 2032 | Cap à la Roche Course light buoy D35 | Route de la Pointe-des-Grondines. 46 33 42.0 072 07 22.9 | Fl G 4s | | | Green spar , marked "D35". | (Winter spar.) Year round. Chart:1314 Edn 08/20 (Q20-133) |
| 2037 | Battures des Belles Filles light buoy D41 | Route de l'Anse-des-Grondines. 46 33 07.9 072 08 49.3 | Q G 1s | | | Green spar , marked "D41". | (Winter spar.) Year round. Chart:1314 Edn 08/20 (Q20-134) |
| 2037.5 | Battures des Belles Filles light buoy D42 | Route de l'Anse-des-Grondines. 46 33 13.7 072 08 57.1 | Fl R 4s | | | Red spar , marked "D42". | (Winter spar.) Year round. Chart:1314 Edn 08/20 (Q20-135) |
| 2040 | Butte à Moineau light buoy D59 | Traverse de Batiscan. 46 31 22.5 072 12 07.7 | Fl G 4s | | | Green spar , marked "D59". | (Winter spar.) Year round. Chart:1314 Edn 08/20 (Q20-136) |
| 2043.6 | Rivière Batiscan light buoy D62 | Traverse de Batiscan. 46 31 09.7 72 12 56.4 | Q R 1s | | | Red spar , marked "D62". | Year round. Chart:1314 Edn 08/20 (Q20-137) |
| 2048 | Battures Perron light buoy D82 | Route de Gentilly. 46 28 21.3 072 14 42.0 | Fl R 4s | | | Red spar , marked "D82". | (Winter spar.) Year round. Chart:1313 Edn 08/20 (Q20-141) |
| 2052.5 | Pointe à la Citrouille light buoy D88 | Off point. 46 27 17.3 072 15 31.1 | Fl R 4s | | | Red spar , marked "D88". | (Winter spar.) Year round. Chart:1313 Edn 08/20 (Q20-142) |
| 2055 | Petite batture Champlain light buoy C4 | Route de Champlain, N. side of channel. 46 26 29.1 072 17 02.3 | Fl R 4s | | | Red spar , marked "C4". | (Winter spar.) Year round. Chart:1313 Edn 08/20 (Q20-143) |

MONTHLY NOTICES TO MARINERS
EASTERN EDITION 08/2020

SECTION 5 – LIST OF LIGHTS, BUOYS AND FOG SIGNALS CORRECTIONS

| No. | Name | Position ----- Latitude N. Longitude W. | Light Characteristics | Focal Height in m. above water | Nomi- nal Range | Description ----- Height in meters above ground | Remarks ----- Fog Signals |
|--------|---|---|--------------------------|--|-----------------------|--|---|
| 2057 | Poulier Dubord light buoy C13 | Route de Champlain, S. side of channel. 46 26 08.4 072 20 00.7 | Fl G 4s | | | Green spar , marked "C13". | (Winter spar.) Year round. Chart:1313 Edn 08/20 (Q20-144) |
| 2059 | Poulier Dubord light buoy C17 | At upper end of Champlain, main channel. 46 25 52.5 072 21 02.0 | Q G 1s | | | Green spar , marked "C17". | (Winter spar.) Year round. Chart:1313 Edn 08/20 (Q20-145) |
| 2066 | Pointe à Bigot light buoy C21 | Port de Bécancour, main channel. 46 24 56.8 072 22 24.4 | Fl G 4s | | | Green spar , marked "C21". | Year round. Chart:1313 Edn 08/20 (Q20-146) |
| 2069.8 | Batture Francoeur light buoy C28 | Route de Bécancour. 46 23 15.2 072 25 38.6 | Q R 1s | | | Red spar , marked "C28". | (Winter spar.) Year round. Chart:1313 Edn 08/20 (Q20-147) |
| 2072 | Pointe de Bécancour light buoy C34 | Battures Provencher, Traverse de Bécancour. 46 22 54.1 072 26 38.4 | Q R 1s | | | Red spar , marked "C34". | (Winter spar.) Year round. Chart:1313 Edn 08/20 (Q20-148) |
| 2077 | Cap à l'Anse light buoy C39 | Champlain. 46 22 35.5 072 27 37.6 | Fl G 4s | | | Green spar , marked "C39". | (Winter spar.) Year round. Chart:1313 Edn 08/20 (Q20-129) |
| 2079 | Sainte-Marthe-du- Cap light buoy C43 | Batture aux Veaux. 46 22 13.5 072 28 50.7 | Fl G 4s | | | Green spar , marked "C43". | (Winter spar.) Year round. Chart:1313 Edn 08/20 (Q20-138) |
| 2085 | Pointe des Chenaux light buoy C49 | Champlain. 46 21 06.5 072 30 23.3 | Fl G 4s | | | Green spar , marked "C49". | (Winter spar.) Year round. Chart:1313 Edn 08/20 (Q20-126) |
| 2104.2 | Trois-Rivières Harbour light buoy C63 | Champlain, main channel. 46 19 22.1 072 32 44.6 | Fl G 4s | | | Green spar , marked "C63". | Year round. Chart:1313 Edn 08/20 (Q20-150) |
| 2110 | Pointe aux Sables light buoy S2 | Port-Saint-François. 46 16 30.0 072 37 22.4 | Q R 1s | | | Red spar , marked "S2". | Year round. Chart:1312 Edn 08/20 (Q20-151) |
| 2114.5 | Batture aux Outardes light buoy S3 | Route de Port Saint- François. 46 15 58.1 072 37 58.2 | Fl G 4s | | | Green spar , marked "S3". | (Winter spar.) Year round. Chart:1312 Edn 08/20 (Q20-114) |

MONTHLY NOTICES TO MARINERS
EASTERN EDITION 08/2020

SECTION 5 – LIST OF LIGHTS, BUOYS AND FOG SIGNALS CORRECTIONS

| No. | Name | Position ----- Latitude N. Longitude W. | Light Characteristics | Focal Height in m. above water | Nomi- nal Range | Description ----- Height in meters above ground | Remarks ----- Fog Signals |
|--------|--|--|--------------------------|--|-----------------------|--|---|
| 2119 | <i>Courbe de Nicolet</i> light buoy S8 | <i>Main channel.</i> 46 15 50.8 072 39 16.7 | Q R 1s | | | Red spar , marked "S8". | (Winter spar.) Year round. Chart:1312 Edn 08/20 (Q20-152) |
| 2133 | Lac Saint-Pierre light buoy S51 | Courbe Yamachiche. 46 12 55.6 072 48 19.9 | Q G 1s | | | Green spar , marked "S51". | (Winter spar.) Year round. Chart:1312 Edn 08/20 (Q20-115) |
| 2137 | Lac Saint-Pierre light buoy S63 | Courbe Yamachiche. 46 12 25.8 072 49 44.2 | Q G 1s | | | Green spar , marked "S63". | (Winter spar.) Year round. Chart:1312 Edn 08/20 (Q20-116) |
| 2146 | Battures Saint-François light buoy S87 | Route Louiseville Amont. 46 10 44.4 072 54 55.8 | Q G 1s | | | Green spar , marked "S87". | (Winter spar.) Year round. Chart:1312 Edn 08/20 (Q20-117) |
| 2154 | Battures Saint-François light buoy S103 | Route Île aux Raisins. 46 08 51.2 072 56 51.8 | Q G 1s | | | Green spar , marked "S103". | (Winter spar.) Year round. Chart:1312 Edn 08/20 (Q20-118) |
| 2164 | Îlets Percés light buoy S111 | Route Île des Barques. 46 07 07.6 072 57 26.2 | Q G 1s | | | Green spar , marked "S111". | Year round. Chart:1312 Edn 08/20 (Q20-109) |
| 2165 | Îlets Percés light buoy S114 | Route Île des Barques. 46 06 48.2 072 58 02.9 | Q R 1s | | | Red spar , marked "S114". | Year round. Chart:1312 Edn 08/20 (Q20-112) |
| 2172 | Baie de l'Île à la Pierre light buoy S120 | Route Sainte-Anne-de-Sorel. 46 05 51.7 072 59 15.7 | Fl R 4s | | | Red spar , marked "S120". | Year round. Chart:1312 Edn 08/20 (Q20-110) |
| 2173 | Île des Barques light buoy S123 | Route Sainte-Anne-de-Sorel. 46 04 48.5 073 00 53.5 | Fl G 4s | | | Green spar , marked "S123". | (Winter spar.) Year round. Chart:1312 Edn 08/20 (Q20-113) |
| 2181.2 | Sainte-Anne-de-Sorel light buoy S141 | Route de l'Île du Moine. 46 03 35.1 073 04 59.5 | Fl G 4s | | | Green spar , marked "S141". | Year round. Chart:1312 Edn 08/20 (Q20-111) |
| 2287 | Chenal de l'Île Saint-Ours light buoy M26 | Petite Traverse de Contrecoeur. 45 54 01.8 073 13 33.7 | Fl R 4s | | | Red spar , marked "M26". | (Winter spar.) Year round. Chart:1311 Edn 08/20 (Q20-131) |
| 2327.4 | Traverse de Verchères light buoy M87 | 45 46 40.0 073 21 49.0 | Q G 1s | | | Green spar , marked "M87". | Year round. Chart:1311 Edn 08/20 (Q20-097) |

MONTHLY NOTICES TO MARINERS
EASTERN EDITION 08/2020

SECTION 5 – LIST OF LIGHTS, BUOYS AND FOG SIGNALS CORRECTIONS

| No. | Name | Position ----- Latitude N. Longitude W. | Light Characteristics | Focal Height in m. above water | Nomi- nal Range | Description ----- Height in meters above ground | Remarks ----- Fog Signals |
|--------|---|--|--------------------------|--|-----------------------|--|--|
| 2329.2 | Chenal du Cap-Saint-Michel – Verchères light buoy M104 | 45 45 00.9 073 24 00.7 | Fl R 4s | | | Red spar, marked "M104". | Year round. Chart:1311 Edn 08/20 (Q20-106) |
| 2343.2 | Île aux Vaches light buoy M144 | 45 39 56.7 073 27 48.8 | Fl R 4s | | | Red spar, marked "M144". | Year round. Chart:1310 Edn 08/20 (Q20-107) |
| 2355.5 | Tétreaultville light buoy M165 | 45 36 18.1 073 30 07.2 | Fl G 4s | | | Green spar, marked "M165". | Year round. Chart:1310 Edn 08/20 (Q20-108) |

INLAND WATERS

ST. LAWRENCE RIVER SEAWAY (LL 0.05 - 401, 1193 – 1204.5)

| | | | | | | | |
|-----------------|--|---|---------|-------|-------|---|--|
| 9 | Pointe Johnson light buoy A7 | 45 24 15.2 073 44 30.4 | Fl G 4s | | | Green spar, marked "A7". | (Winter spar.) Seasonal (in place year round). Chart:1430 Edn 08/20 (Q20-029) |
| 16 | Île Saint-Bernard light buoy A18 | 45 24 15.3 073 46 55.3 | Q R 1s | | | Red spar, marked "A18". | (Winter spar.) Seasonal (in place year round). Chart:1430 Edn 08/20 (Q20-048) |
| 20 | Île Ronde light buoy A29 | 45 22 39.0 073 48 53.8 | Fl G 4s | | | Green spar, marked "A29". | Seasonal (in place year round). Chart:1430 Edn 08/20 (Q20-035) |
| 20.5 | Île Ronde light buoy A30 | 45 22 42.7 073 49 00.4 | Fl R 4s | | | Red spar, marked "A30". | Seasonal (in place year round). Chart:1430 Edn 08/20 (Q20-036) |
| 28 | Pointe-du-Moulin light buoy A46 | 45 21 04.1 073 51 47.3 | Fl R 4s | | | Red spar, marked "A46". | (Winter spar.) Seasonal (in place year round). Chart:1430 Edn 08/20 (Q20-062) |
| 31.5 | Pointe Thibaudeau light buoy BEAC | Beauharnois anchorage. 45 19 44.2 073 53 19.6 | Fl Y 4s | | | Yellow spar, marked "BEAC". | Seasonal (in place year round). Chart:1430 Edn 08/20 (Q20-037) |
| 99.4 H2550 | Saint-Anicet East range | NW. of Pointe Saint-Louis. 45 11 11.4 074 18 28.2 | F G | | 11.8 | 13 White cylindrical tower, orange triangular daymark with black vertical stripe. 11.6 | Visible in line of range. Operates 24 h. Seasonal. |
| 99.5 H2550.1 | | 054°43' 1218.3 m from front. | F G | | 22.7 | 13 White cylindrical tower, orange triangular daymark with black vertical stripe. 22.4 | Visible in line of range. Operates 24 h. Seasonal. Chart:1432 Edn 08/20 (B20-019, 020) |

MONTHLY NOTICES TO MARINERS
EASTERN EDITION 08/2020

SECTION 5 – LIST OF LIGHTS, BUOYS AND FOG SIGNALS CORRECTIONS

| No. | Name | Position ----- Latitude N. Longitude W. | Light Characteristics | Focal Height in m. above water | Nomi- nal Range | Description ----- Height in meters above ground | Remarks ----- Fog Signals |
|-------------------------|--------------------------------|--|--------------------------|--|-----------------------|--|---|
| 111 | Pointe Dupuis range | On Île Minguy. 45 07 39.8 074 24 34.1 | F Y | 9.0 | 14 | White square skeleton tower, orange triangular daymark, black vertical stripe. 8.4 | Seasonal. |
| 112 H2548.1 | | 086°30' 400.8 m from front. | F G | 20.0 | 14 | White skeleton tower, orange triangular daymark with black vertical stripe. 19.5 | Operates 24 h. Seasonal. Chart:1432 Edn 08/20 (B20-038) |
| 114.1 H2551.1 | Saint-Anicet West range | W. of Île Dupuis. 45 07 20.0 074 26 09.9 | F G | 10.3 | 13 | White cylindrical tower, orange triangular daymark with black vertical stripe. 10.5 | Visible in line of range. Operates 24 h. Seasonal. |
| 114.2 | | 234°30' 2043.8 m from front. | F G | 22.5 | 13 | White cylindrical tower, orange triangular daymark with black vertical stripe. 22.6 | Visible in line of range. Operates 24 h. Seasonal. Chart:1432 Edn 08/20 (B20-021, 022) |
| 123 H2556 | Light D50 Lancaster range | NNW. of Butternut Island. 45 06 01.2 074 29 28.2 | Iso G 4s | 11.7 | 13 | White hexagonal tower with red top, orange triangular daymark with black vertical stripe marked "D50". 10.2 | Visible in line of range. Seasonal. |
| 124 H2556.1 | | 228°45' 786.3 m from front. | F G | 24.1 | 13 | White cylindrical tower, orange triangular daymark with black vertical stripe. 24.2 | Visible in line of range. Seasonal. Chart:1432 Edn 08/20 (B20-036, 037) |
| 126 H2560 | Butternut Island range | On crib. 45 05 33.7 074 29 18.8 | Iso G 4s | 11.1 | 13 | White cylindrical tower, orange triangular daymark with black vertical stripe. 11.5 | Visible in line of range. Seasonal. |
| 127 H2560.1 | | 046°00' 595.6 m from front. | F G | 18.8 | 13 | White cylindrical tower, orange triangular daymark with black vertical stripe. 19.0 | Visible in line of range. Seasonal. Chart:1432 Edn 08/20 (B20-033, 034) |
| 130 H2558 | Camerons Island Lower range | On crib. 45 04 34.9 074 30 15.1 | Iso G 4s | 9.3 | 13 | White cylindrical tower, orange triangular daymark with black vertical stripe. 11.2 | Visible in line of range. Operates 24 h. Seasonal. |
| 131 H2558.1 | | 207°15' 696.2 m from front. | F G | 17.9 | 13 | White skeleton tower, orange triangular daymark with black vertical stripe. 16.8 | Visible in line of range. Operates 24 h. Seasonal. Chart:1432 Edn 08/20 (B20-023, 024) |

MONTHLY NOTICES TO MARINERS
EASTERN EDITION 08/2020

SECTION 5 – LIST OF LIGHTS, BUOYS AND FOG SIGNALS CORRECTIONS

| No. | Name | Position ----- Latitude N. Longitude W. | Light Characteristics | Focal Height in m. above water | Nomi- nal Range | Description ----- Height in meters above ground | Remarks ----- Fog Signals |
|--|---|---|--------------------------|--|-----------------------|--|---|
| 136 H2568 | Camerons Island Upper range | On crib. 45 04 03.2 074 31 03.2 | Iso G 4s | 10.1 | 13 | White skeleton tower, orange triangular daymark with black vertical stripe. 7.7 | Visible in line of range. Operates 24 h. Seasonal. |
| 137 H2568.1 | | 059°30' 731.5 m from front. | F G | 18.0 | 13 | White skeleton tower, orange triangular daymark with black vertical stripe. 15.6 | Visible in line of range. Operates 24 h. Seasonal. |
| | | | | | | | Chart:1432 Edn 08/20 (B20-025, 026) |
| GEORGIAN BAY (LL 814 – 982) | | | | | | | |
| 826 | Cabot Head | On cliff E. of Wingfield Basin. 45 14 42.8 081 17 31.1 | Fl W 10s | 25.0 | 10 | White Skeleton tower. 13.9 | Flash 1 s; eclipse 9 s. Seasonal (in place year round). |
| | | | | | | | Chart:2282 Edn 08/20 (D20-010) |
| 886 | Turning Rock, Waubashene | S. of Canary Island. 44 46 20.4 079 44 23.7 | Fl W 4s | 10.4 | 5 | Skeleton tower, red and white rectangular daymark, red triangle in centre. 9.3 | Seasonal (in place year round). |
| | | | | | | | Chart:2029 Edn 08/20 (D20-012) |
| 887 | Mary Rocks | On the most eastern rock of Mary Rocks. 44 46 12.5 079 43 23.0 | Fl W 4s | 6.9 | 5 | Cylindrical mast, red and white rectangular daymark, green square in centre. 6.4 | Seasonal (in place year round). |
| | | | | | | | Chart:2241 Edn 08/20 (D20-013) |
| LAKE SUPERIOR (LL 1082 – 1161) | | | | | | | |
| 1108 | Slate Islands ODAS light buoy 45136 | 48 31 57.4 086 56 14.0 | Fl(5) Y 20s | | | Yellow ODAS , marked "45136". | Maintained by Environment Canada. (Winter spar.) Seasonal. |
| | | | | | | | Chart:2303 Edn 08/20 (D20-020) |
| OTTAWA RIVER (LL 1233.3 – 1322) | | | | | | | |
| 1302 | Sandhills | On crib off point S. shore, above Aylmer. 45 30 40.5 076 05 38.2 | Fl W 4s | 6.0 | 3 | Mast, white cylindrical daymark. 6.8 | Seasonal. |
| | | | | | | | Chart:1550 Edn 08/20 (B20-018) |
| 1306.7 | Pembroke | On far end of breakwall at marina. 45 49 47.2 077 07 02.1 | Iso G 4s | 10.4 | 5 | White cylindrical tower with green top. 6.1 | Seasonal. |
| | | | | | | | Chart:1553 Edn 08/20 (B20-003) |
| 1310.1 | Short Turn Island light buoy K65/1 | 45 55 50.2 077 15 21.5 | Q G 1s | | | Green spar, marked "K65/1". | Seasonal (in place year round). |
| | | | | | | | Chart:1553 Edn 08/20 (B20-035) |
| 1310.4 | Short Turn Island light buoy K66 | Fort William. 45 56 28.2 077 16 29.4 | Fl R 4s | | | Red spar, marked "K66". | Seasonal (in place year round). |
| | | | | | | | Chart:1553 Edn 08/20 (B20-027) |

CANADIAN COAST GUARD – MARINE INFORMATION REPORT AND SUGGESTION SHEET

Name of Ship or Sender: Date:

Address of Sender:
Street # Street Name

Town / City: Prov / State: Postal Code / Zip Code:

Tel / Fax / E-mail address of sender:

Observation Date: Time (UTC):

Geographical Position:

Coordinate Position: Lat: Long:

Position Method: DGPS GPS with WAAS GPS Radar Other

Horizontal Datum Used: WGS 84 NAD 27 Other

Estimated Position Accuracy:

Chart #: Datum: NAD 27 NAD 83

Chart Edition: Last Correction applied:

Publications affected (Quote edition and page number):

*Full details (Attach additional sheets as necessary):

Mariners are requested to notify the responsible authorities when new or suspected dangers to navigation are discovered, changes are observed in aids to navigation, or corrections to publications are seen to be necessary.

In the case of new or suspected dangers to navigation, it is important that all details be given in order to aid with future investigations. Items of interest include heights, depths, physical description, type of bottom and equipment method used to position the item. It is helpful to mark details on the chart, which will be promptly replaced by the Canadian Hydrographic Service.

Reports should be made to the nearest Marine Communications and Traffic Services Centre (MCTS) and should be confirmed in writing to:

Leader, Notices to Mariners
Canadian Coast Guard
Department of Fisheries and Oceans
Montreal, QC H2Y 2E7
Notmar.XNCR@dfo-mpo.gc.ca

In the case of information concerning aids to navigation or the
List of Lights, Buoys and Fog Signals book.

OR

Director General, Canadian Hydrographic Service &
Oceanographic Services
Department of Fisheries and Oceans
Ottawa, ON K1A 0E6
CHSINFO@dfo-mpo.gc.ca

In the case of new or suspected dangers to navigation or
where corrections to "Sailing Directions" appear to be
necessary.

For general questions on Canadian Coast Guard programs or services, please send an e-mail to:
info@dfo-mpo.gc.ca