



Fisheries and Oceans
Canada

Pêches et Océans
Canada

Canadian
Coast Guard

Garde côtière
canadienne

Notices to Mariners

Edition No. 09/2023
September 29, 2023



Safety First, Service Always

Monthly Western Edition

Canada 

Notices to Mariners – Monthly Western Edition
Edition No. 09/2023

Aussi disponible en français :
Avis aux navigateurs – Édition mensuelle de l'Ouest
Édition n° 09/2023

Published under the Authority of:

Canadian Coast Guard Programs
Aids to Navigation and Waterways
Fisheries and Oceans Canada
Montreal, QC H2Y 2E7

For more information, contact DFO.Notmar-Notmar.MPO@dfo-mpo.gc.ca.

© His Majesty the King in Right of Canada,
as represented by the Minister of Fisheries, Oceans
and the Canadian Coast Guard, 2023.

Cat. No. Fs152-9E-PDF (Electronic PDF, English)
ISSN 2817-0253

Cat. No. Fs152-9F-PDF (Electronic PDF, French)
ISSN 2817-0261

A web version is available here:

<https://www.notmar.gc.ca/monthly> (English)

<https://www.notmar.gc.ca/mensuel> (French)

Explanatory Notes – Notices to Mariners (NOTMAR)

Geographical positions refer directly to the graduations of the largest scale Canadian Hydrographic Service chart (unless otherwise indicated).

Bearings refer to the true compass and are measured clockwise from 000° (North) clockwise to 359°; those relating to lights are from seaward.

Visibility of lights is that in clear weather.

Depths - The units used for soundings (metres, fathoms or feet) are stated in the title of each chart.

Elevations are normally given above Higher High Water, Large Tide (unless otherwise indicated).

Distances may be calculated as follows:

- 1 nautical mile = 1,852 metres (6,076.1 feet)
- 1 statute mile = 1,609.3 metres (5,280 feet)
- 1 metre = 3.28 feet

Temporary and Preliminary Notices to Mariners – Section 1A of *Notices to Mariners*

These notices are indicated by a (T) or a (P), respectively. Please note that nautical charts are not amended by the Canadian Hydrographic Service for temporary (T) and preliminary (P) notices. It is recommended that mariners chart these corrections in pencil. For the list of charts affected by (T) & (P) notices, please refer to the current [Notices to Mariners - Monthly Summary of Temporary and Preliminary Notices](#) publication.

Suggestions and Corrections Form

This form is specifically for suggestions and corrections to Notices to Mariners publications. It is available [online](#) and also in [fillable PDF format](#) included with the monthly publication ZIP file.

To submit comments and suggestions on possible improvements to the various publications and services: DFO.Notmar-Notmar.MPO@dfo-mpo.gc.ca.

To report chart discrepancies and/or corrections to the *Canadian Sailing Directions* booklets: Fill out the [Marine Information Reporting Form](#) and/or email chsinfo@dfo-mpo.gc.ca.

To report emergencies or navigational hazards: [Contact your nearest MCTS centre](#)

- VHF channel 16 (156.8 MHz)
- MF/HF frequency 2182 kHz/4125 kHz (where available)
- *16 on a cellphone (where available)

NOTMAR Website – Monthly Editions, Chart Corrections and Chart Patches

The NOTMAR website allows users to access the [monthly publications](#), [chart corrections](#), and [chart patches](#).

Users can subscribe for free to the [email notification service](#) to receive notifications when charts of interest are updated, including their patches, as well as when a new Monthly Edition of *Notices to Mariners* is published.

In addition, the monthly publication and related files to download, such as chart patches, can be obtained all together through the download of a single ZIP file.

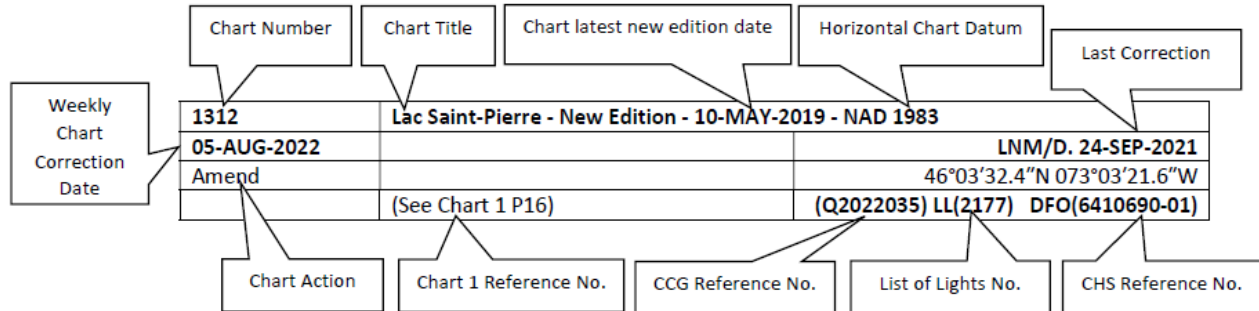
Explanatory Notes – Canadian Hydrographic Service (CHS)

Chart Corrections – Section 2 of *Notices to Mariners*

Corrections to nautical charts will be listed in numerical order by chart number. Each chart correction listed applies only to that particular chart. Related charts, if any, will have their own specific correction listed separately.

Users should also refer to CHS *Chart 1: Symbols, Abbreviations and Terms* for additional information pertaining to the correction of charts.

The illustration below describes the elements that will comprise a typical Section 2 chart correction:



The last correction number is identified with the **LN/D** or **Last Notice to Mariners Number / Date**.

Mariners are advised that only the most critical changes that directly affect safety to navigation are issued in “Section 2 – Chart Corrections.” This limitation is required to ensure that charts remain as clear and easy to read as possible. As a result, mariners may see minor discrepancies of a non-critical nature between information in official publications. For example, a small change in the nominal range or focal height of a light may not result in the production of a chart correction in *Notices to Mariners*, but may result in a correction in the [List of Lights, Buoys and Fog Signals](#) publication.

Note: In the case of a discrepancy between information provided on CHS charts relating to aids to navigation, and the *List of Lights, Buoys and Fog Signals* publication, the latter shall be deemed as containing the most up-to-date information.

Canadian Nautical Charts & Publications

A source list of Canadian nautical charts and publications is published in Notice No. 14 of the *Notices to Mariners Annual Edition 2023*. The source supply and the prices effective at the time of printing are listed. For current chart edition dates, please refer to the following website: <https://www.charts.gc.ca/charts-cartes/paper-papier/papertable-tablepapier-eng.asp>.

Explanatory Notes – Marine Communications and Traffic Services (MCTS)

Navigational Warnings / Notices to Shipping

The Canadian Coast Guard (CCG) is implementing a number of changes to the aids to navigation system in Canada.

These changes are advertised as Navigational Warnings, formerly called Notices to Shipping¹, that are broadcast by the CCG, and are then followed up with Notices to Mariners, then charts are updated by hand correction, reprints or new editions.

Mariners are advised that all relevant Navigational Warnings (NAVWARN) should be kept until superseded by Notices to Mariners or through revised charts issued by the Canadian Hydrographic Service (CHS).

NAVWARN are accessible on the applicable regional page on the CCG Navigational Warnings website at <http://nis.ccg-gcc.gc.ca>.

CHS is reviewing the impact of these changes with CCG and together are preparing an action plan on the issuing of chart revisions.

For further information, contact your regional NAVWARN Issuing Desk.

<p>Western Region Prince Rupert MCTS Centre</p> <p>“P” Series NAVWARN</p> <p>Canadian Coast Guard Bag 4444 Prince Rupert, BC V8J 4K2</p> <p>Telephone: 250-627-3070</p> <p>Email: NAVWARN.MCTSPrinceRupert@innav.gc.ca</p>	<p>Arctic Region *Iqaluit MCTS Centre</p> <p><i>Operational from approximately mid-May until late December.</i></p> <p>“A” Series NAVWARN</p> <p>Canadian Coast Guard P.O. Box 189 Iqaluit, NU X0A 0H0</p> <p>Telephone: 867-979-5269 Facsimile: 867-979-4264</p> <p>Email: NAVWARN.MCTSIqaluit@innav.gc.ca</p>
----------------------------------------------------------------------------------------------------------------------------------------------------------------------------------------------------------------------------------------------------------------------------------------------------------------	----------------------------------------------------------------------------------------------------------------------------------------------------------------------------------------------------------------------------------------------------------------------------------------------------------------------------------------------------------------------------------------------------

*Service available in English and in French.

¹ The expression “Notice to Shipping” was changed to “Navigational Warning” in January 2019.

Table of Contents

Section 1: General and Safety Information	1
*1105/21 West Coast Haida Gwaii – Voluntary Protection Zone for Shipping	1
*905/22 Transport Canada – British Columbia North Coast Waterway Management Guidelines	2
*505/23 Canadian Hydrographic Service – Magnetic Declination Calculations	3
*508/23 Anguniaqvia Niqiqyuam Marine Protected Areas (ANMPA) and Tarium Nirytutait Marine Protected Areas (TNMPA) – Beluga and Bowhead Whale Protection: Voluntary Avoidance and Slowdown Areas	4
*901/23 Canadian Hydrographic Service – Electronic Navigational Charts	7
*902/23 Transport Canada – Whale Protection Measures in Squally Channel, Lewis Pass, Wright Sound, Whale Channel, and lower Douglas & Grenville Channels	14
*903/23 Canadian Coast Guard – Modified Notices to Mariners Email Address	14
*911/23 Shuswap Lake – Daybeacon Permanently Discontinued	14
*912/23 North Pender Island to/à Thetis Island – Daybeacon Permanently Changed	14
Section 1A: Temporary and Preliminary Notices	15
Reminder – Comment Period for Active Preliminary Notices	15
Section 2: Chart Corrections	16
Section 3: Radio Aids to Marine Navigation Corrections	18
*919/23 Radio Aids to Marine Navigation 2023 (Atlantic, St. Lawrence, Great Lakes, Lake Winnipeg, Arctic and Pacific)	18
Section 4: Canadian Sailing Directions Corrections	21
Section 5: List of Lights, Buoys and Fog Signals Corrections	22

Numerical Index of Canadian Charts Affected

This numerical index lists all nautical charts mentioned in this monthly edition of Notices to Mariners. Only charts appearing in Section 2 of this publication require a chart correction. The appearance of charts in all other sections, particularly those related to the correction of other nautical publications, is included here for reference.

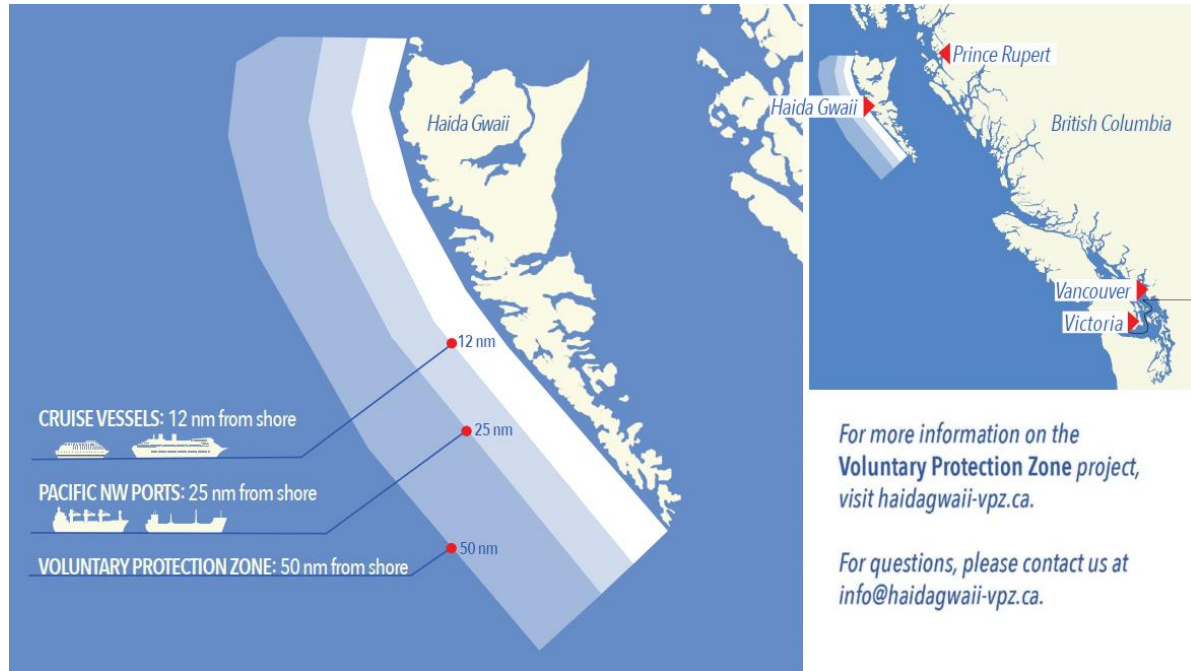
Chart No.	Pages	Chart No.	Pages	Chart No.	Pages
3053	14				
3424	16				
3442	14				
3461	16				
3462	16				
3490	16				
3546	22				
3980	15				
6217	17				

Section 1: General and Safety Information

*1105/21 West Coast Haida Gwaii – Voluntary Protection Zone for Shipping

(Recurrent publication of notice *1105/21, originally published in the *Notices to Mariners – Monthly Western Edition 11/2021* publication.)

Reference: Notice *903/21 is cancelled.



Voluntary Protection Zone for Shipping, West Coast Haida Gwaii (formerly Queen Charlotte Islands)

Haida Gwaii's remote location, rugged coastline, variable sea and weather conditions, and rich ecological and cultural heritage make it vulnerable to the potential for pollution from shipping breakdowns and accidents. Increasing the distance vessels travel offshore can increase the amount of time available to address propulsion, steering or other issues, and the likelihood of a towing vessel being able to respond to a vessel that is disabled or drifting. This in turn reduces the risk of grounding and oil spills.

A Voluntary Protection Zone for Shipping on the West Coast of Haida Gwaii is currently in effect. In the Voluntary Protection Zone, commercial vessels of 500 gross tonnage or greater shall observe a minimum distance of 50 nautical miles offshore when transiting along the West Coast of Haida Gwaii with the following exceptions:

- Cruise vessels, to observe a minimum 12 nm distance from shore;
- Vessels transiting between Pacific Northwest ports (Washington, Alaska, BC), to observe a minimum 25 nm distance from shore;
- Tugs and barges (including pushing and towing alongside), no minimum distance; and
- Fishing vessels, no minimum distance.

The Voluntary Protection Zone for Shipping coordinates are:

54° 15.436' N 133° 04.788' W
54° 17.572' N 134° 02.484' W
54° 13.614' N 134° 19.427' W
54° 11.786' N 134° 30.841' W
53° 44.036' N 134° 32.677' W
53° 11.118' N 134° 16.412' W
52° 18.483' N 133° 20.917' W
51° 24.590' N 132° 04.081' W
51° 56.158' N 131° 01.830' W

Vessels are requested to adhere to these distances on a voluntary basis and only when it does not jeopardize the safety of navigation, the vessel, the persons aboard, and the cargo.

(NW-P-1085-20)

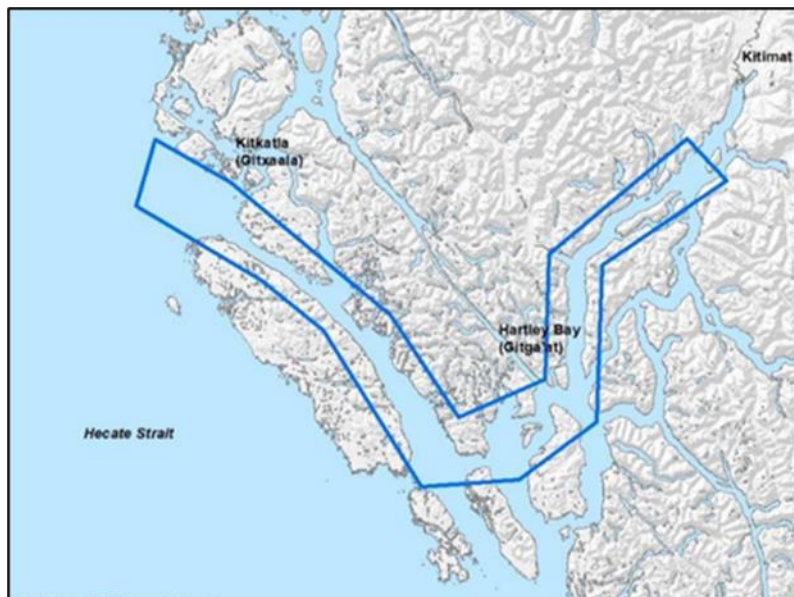
***905/22 Transport Canada – British Columbia North Coast Waterway Management Guidelines**

(Recurrent publication of notice *905/22, originally published in the *Notices to Mariners – Monthly Western Edition 09/2022* publication.)

The North Coast Waterway Management Guidelines are voluntary guidelines that aim to improve safety on the water by reducing conflicts between First Nations' marine use activities, such as fishing and shoreline harvesting, and commercial vessels on the shipping route between Kitimat and Browning Entrance. The guidelines came into effect on September 1, 2022, and will be reviewed from time to time.

The guidelines apply to all vessels navigating on the route between Kitimat and Browning Entrance, on the north coast of British Columbia. This area includes:

- Douglas Channel
- Wright Sound
- Lewis Passage
- Otter Channel
- Nepean Sound, and
- Principe Channel



The complete guidelines document is available at the following link:

https://www.notmar.gc.ca/publications/monthly/documents/NorthCoastWaterwayManagementGuidelines_Sept2022.pdf

Nothing in these guidelines replaces or changes how we apply any Canadian or international laws or regulations, including the Collision Regulations. Furthermore, nothing in these guidelines prevents or limits the master or pilot of a ship from making any decisions to protect the vessel, the crew, or the marine environment.

The guidelines include information for:

- all vessels that covers:
 - inshore safety zones
 - routing measures
 - speed reductions
 - guidelines for meeting and passing
 - a special operating area in Wright Sound, and
 - guidelines in case of a mechanical or electrical breakdown
- large commercial ships, including bulk carriers, general cargo vessels, liquid bulk vessels, and passenger vessels
- tugs and barges, and
- vessels operating in First Nations Areas of Concern where you must pay special attention to make sure local community users can transit and use the area safely.

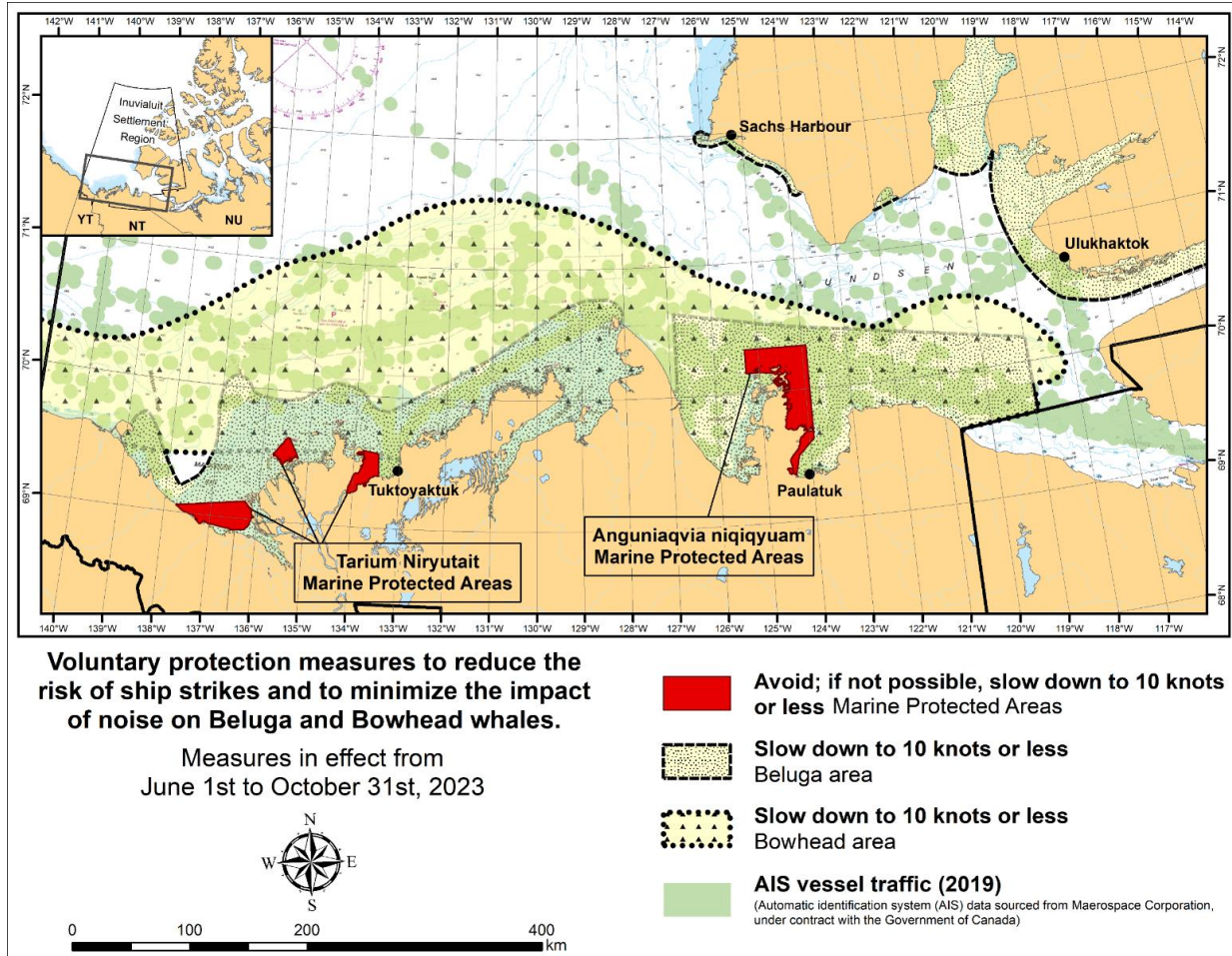
***505/23 Canadian Hydrographic Service – Magnetic Declination Calculations**

(Recurrent publication of notice *505/23, originally published in the *Notices to Mariners – Monthly Western Edition 05/2023* publication.)

Mariners are advised that CHS has adopted the harmonized World Magnetic Model (WMM), as found on the NCEI/NOAA website. Old compass rose declination information on CHS navigational products can be updated using this website: <https://www.ngdc.noaa.gov/geomag/calculators/magcalc.shtml#declination>. While the differences in the model declinations are small each year, they can become more significant over a large period of time.

***508/23 Anguniaqvia Niqiqyuam Marine Protected Areas (ANMPA) and Tarium Niryutait Marine Protected Areas (TNMPA) – Beluga and Bowhead Whale Protection: Voluntary Avoidance and Slowdown Areas**

(Recurrent publication of notice *508/23, originally published in the *Notices to Mariners – Monthly Western Edition 05/2023* publication.)



The two established Marine Protected Areas (MPAs) in Canada’s Western Arctic are located within the Inuvialuit Settlement Region, as such all activities must comply with the [Inuvialuit Final Agreement](#). Protection and preservation of Arctic wildlife, the environment and biological productivity is one of the principles of the Inuvialuit Final Agreement and it is this principle that led the Inuvialuit Regional Corporation and the Inuvialuit Game Council to initiate establishment of the Western Arctic MPAs. The waters in and near the MPAs, and the offshore marine habitats of the Beaufort Sea and Amundsen Gulf, are important summer foraging habitats used seasonally (May-October) by the Eastern Beaufort Sea beluga stock, and the Bering-Chukchi-Beaufort bowhead population.

REGULATORY PROTECTION MEASURES

All whale species are protected under the Marine Mammal Regulations, pursuant to the *Fisheries Act*. Within the boundaries of the MPAs, a general prohibition is set out in the Regulations, pursuant to the *Oceans Act*. Any incident with a marine mammal within the MPAs must be reported within two hours after its occurrence, to the Canadian Coast Guard. For marine wildlife sightings and incidents such as collisions that occur outside the MPAs or for any situation involving a marine mammal that is dead or in trouble, contact Fisheries and Oceans Canada, Inuvik office at (867) 777-7500.

For more information on the ANMPA and TNMPA, including local contacts and species specific minimum distances, see Section A2 - Notices 5 and 5A.3 of the *Notices to Mariners Annual Edition 2023*.

VOLUNTARY PROTECTION MEASURES

Voluntary measures are in effect from June 1st to October 31st, 2023. See map above.

These measures apply to merchant vessels, cruise ships, small vessels and adventure craft within the boundaries of the MPAs and the additional identified areas to prevent collisions with whales and to mitigate the underwater noise generated by the vessels. These measures should only be taken when they will not jeopardize navigational safety.

Avoid (red area): To reduce the risk of underwater noise disturbance and collisions with whales within the MPAs, vessels should avoid transiting through the MPAs if possible. If passage through this area is required, vessels should slow down to a maximum speed through the water of 10 knots and post a lookout such as a marine mammal observer in order to increase the chances of seeing the whales and thus taking necessary measures to avoid them. If bypassing the whales is not possible, slow down and wait for the animals to move away to a distance greater than 400 metres (0.215 nautical miles) before resuming original speed up to 10 knots. It is more difficult to see the animals in rain, fog, or in rough sea states, therefore increased caution is recommended.

Slow down to 10 knots or less (yellow area): To reduce the risk of underwater noise disturbance and collisions with whales within this area, it is recommended that vessels should slow down to a maximum speed through the water of 10 knots, remain in the marked community supply channels and post a lookout.

These voluntary measures are secondary to rights under the Inuvialuit Final Agreement.

MPA Coordinates

The Tarium Niryutait Marine Protected Areas consist of three areas of the Mackenzie Bay: Okeevik, Kittigaryuit and Niaqunnaq. The three areas are bounded by rhumb lines connecting the following geographical coordinates [North America Datum 1983 (NAD 83)/World Geodetic System (WGS 84)].

Okeevik Sub Area		
Point	Latitude (North)	Longitude (West)
1	69° 38' 19"	135° 25' 09"
2	69° 38' 03"	135° 25' 11"
3	69° 37' 46"	135° 24' 52"
4	69° 29' 49"	135° 12' 49"
5	69° 30' 45"	135° 16' 56"
6	69° 29' 26"	135° 18' 53"
7	69° 29' 23"	135° 19' 06"
8	69° 28' 07"	135° 20' 25"
9	69° 27' 36"	135° 24' 25"
10	69° 25' 51"	135° 32' 27"
11	69° 26' 32"	135° 34' 54"
12	69° 28' 21"	135° 35' 24"
13	69° 28' 35"	135° 36' 40"
14	69° 28' 39"	135° 37' 58"
15	69° 30' 34"	135° 45' 54"
16	69° 35' 18"	135° 35' 42"
17	69° 36' 00"	135° 22' 10"
18	69° 34' 40"	135° 20' 09"
19	69° 34' 00"	135° 20' 09"
20	69° 34' 00"	135° 27' 39"
21	69° 36' 00"	135° 27' 39"
22	69° 27' 00"	135° 31' 11"
23	69° 27' 00"	135° 34' 45"

Kittigaryuit Sub Area		
Point	Latitude (North)	Longitude (West)
1	69° 35' 10"	133° 48' 26"
2	69° 34' 00"	133° 28' 00"
3	69° 23' 37"	133° 26' 40"
4	69° 20' 34"	133° 40' 37"
5	69° 19' 05"	133° 42' 21"
6	69° 19' 01"	133° 42' 31"
7	69° 20' 39"	133° 43' 20"
8	69° 16' 42"	133° 54' 54"
9	69° 15' 20"	134° 06' 53"
10	69° 16' 33"	134° 05' 56"
11	69° 20' 42"	134° 02' 44"
12	69° 24' 00"	133° 59' 10"
13	69° 24' 34"	133° 53' 49"
14	69° 28' 21"	133° 48' 15"
15	69° 28' 02"	133° 50' 59"
16	69° 33' 20"	133° 47' 29"
17	69° 34' 33"	133° 47' 42"
18	69° 32' 55"	133° 51' 09"
19	69° 32' 56"	133° 51' 54"
20	69° 33' 46"	133° 55' 48"
21	69° 33' 46"	133° 55' 31"

Niaqunnaq Sub Area		
Point	Latitude (North)	Longitude (West)
1	69° 08' 00"	136° 16' 44"
2	69° 04' 25"	136° 07' 45"
3	69° 03' 43"	136° 07' 08"
4	69° 01' 19"	136° 04' 45"
5	69° 01' 14"	136° 04' 45"
6	69° 00' 57"	136° 05' 42"
7	69° 00' 12"	136° 07' 08"
8	68° 57' 00"	136° 10' 00"
9	68° 55' 00"	136° 15' 00"
10	68° 54' 22"	136° 31' 50"
11	68° 55' 00"	136° 38' 33"
12	68° 56' 15"	137° 00' 41"
13	68° 56' 29"	137° 03' 03"
14	68° 55' 48"	137° 11' 00"
15	68° 57' 50"	137° 16' 40"
16	68° 59' 20"	137° 21' 30"
17	69° 03' 09"	137° 44' 54"

The Anguniaqvia niqiqyuam Marine Protected Areas consist of two areas in Darnley Bay and Amundsen Gulf in the Beaufort Sea: Zone 1 and Zone 2. The areas consist of the seabed, the subsoil to a depth of five metres and the water column, including the sea ice. The two areas are bounded by straight lines connecting the following geographical coordinates [North America Datum 1983 (NAD 83)].

Zone 1		
Point	Latitude (North)	Longitude (West)
A	69° 21' 07.8"	124° 21' 32.0" approx
B	70° 12' 00.0" approx	124° 31' 55.2"
C	70° 08' 22.0"	124° 41' 45.0" approx
D	70° 09' 09.9"	124° 57' 42.0" approx
E	70° 09' 13.0" approx	125° 05' 28.6"
F	70° 09' 13.2"	125° 17' 53.0"
G	70° 20' 00.0"	125° 17' 53.0"
H	70° 20' 00.0"	123° 54' 17.5"
I	69° 37' 20.6"	123° 54' 17.5"
J	69° 30' 00.0"	124° 15' 34.7"

Zone 2		
Point	Latitude (North)	Longitude (West)
K	70° 04' 15.8"	124° 41' 51.0" approx
L	70° 04' 48.6"	124° 41' 54.0" approx
M	70° 02' 12.9"	124° 35' 23.0" approx
N	70° 02' 12.9"	124° 35' 29.0" approx

***901/23 Canadian Hydrographic Service – Electronic Navigational Charts**

S-57 ENC Number	Chart Title	ENC Compilation Scale	Published
New Charts			
CA43XLWA (Edn 1.000)	Transit4500N07500W	1:11 000	2023-09-15
CA43XM7A (Edn 1.000)	Transit4500N07400W	1:11 000	2023-09-15
CA448M7A (Edn 1.000)	Transit4600N07400W	1:11 000	2023-09-15
CA448MHA (Edn 1.000)	Transit4600N07300W	1:11 000	2023-09-15
CA448MTA (Edn 1.000)	Transit4600N07200W	1:11 000	2023-09-15
CA448N4A (Edn 1.000)	Transit4600N07100W	1:22 500	2023-09-15
CA44JN4A (Edn 1.000)	Transit4700N07100W	1:22 500	2023-09-15
CA44JNEA (Edn 1.000)	Transit4700N07000W	1:22 500	2023-09-15
CA44JQJA (Edn 1.000)	Transit4700N06300W	1:45 000	2023-09-06
CA44JQUA (Edn 1.000)	Transit4700N06200W	1:45 000	2023-09-06
CA44UN4A (Edn 1.000)	Transit4800N07100W	1:11 000	2023-09-15
CA44UNEA (Edn 1.000)	Transit4800N07000W	1:22 500	2023-09-15
CA44UNQA (Edn 1.000)	Transit4800N06900W	1:22 500	2023-09-15
CA455P1A (Edn 1.000)	Transit4900N06800W	1:22 500	2023-09-13
CA455PBA (Edn 1.000)	Transit4900N06700W	1:22 500	2023-09-13
CA455PMA (Edn 1.000)	Transit4900N06600W	1:22 500	2023-09-13
CA45FPBA (Edn 1.000)	Transit5000N06700W	1:22 500	2023-09-13
CA45FPMA (Edn 1.000)	Transit5000N06600W	1:22 500	2023-09-13
CA45FPXA (Edn 1.000)	Transit5000N06500W	1:22 500	2023-09-06
CA45FQ8A (Edn 1.000)	Transit5000N06400W	1:22 500	2023-09-06
CA45FQJA (Edn 1.000)	Transit5000N06300W	1:22 500	2023-09-06
CA45FQUA (Edn 1.000)	Transit5000N06200W	1:22 500	2023-09-06
CA45FR5A (Edn 1.000)	Transit5000N06100W	1:22 500	2023-09-06
CA45FRFA (Edn 1.000)	Transit5000N06000W	1:22 500	2023-09-06
CA45FRRA (Edn 1.000)	Transit5000N05900W	1:22 500	2023-09-06
CA45RRFA (Edn 1.000)	Transit5100N06000W	1:11 000	2023-09-06
CA45RRRA (Edn 1.000)	Transit5100N05900W	1:11 000	2023-09-06
CA45RS2A (Edn 1.000)	Transit5100N05800W	1:11 000	2023-09-06
CA541M6B (Edn 1.000)	Port4530N07410W	1:4 000	2023-09-08
CA541M7B (Edn 1.000)	Port4530N07400W	1:4 000	2023-09-08
CA541M9A (Edn 1.000)	Port4530N07380W	1:6 000	2023-09-06
CA542M5A (Edn 1.000)	Port4540N07420W	1:2 000	2023-09-06
CA542M6A (Edn 1.000)	Port4540N07410W	1:2 000	2023-09-06
CA542M7A (Edn 1.000)	Port4540N07400W	1:6 000	2023-09-06
CA542M8A (Edn 1.000)	Port4540N07390W	1:6 000	2023-09-06
CA542M9A (Edn 1.000)	Port4540N07380W	1:6 000	2023-09-06
CA542MAA (Edn 1.000)	Port4540N07370W	1:6 000	2023-09-06

S-57 ENC Number	Chart Title	ENC Compilation Scale	Published
CA542MBA (Edn 1.000)	Port4540N07360W	1:6 000	2023-09-06
CA542MCA (Edn 1.000)	Port4540N07350W	1:6 000	2023-09-06
CA543M4A (Edn 1.000)	Port4550N07430W	1:2 000	2023-09-06
CA543M7A (Edn 1.000)	Port4550N07400W	1:6 000	2023-09-06
CA543M8A (Edn 1.000)	Port4550N07390W	1:6 000	2023-09-06
CA543M9A (Edn 1.000)	Port4550N07380W	1:6 000	2023-09-06
CA543MAA (Edn 1.000)	Port4550N07370W	1:6 000	2023-09-06
CA543MBA (Edn 1.000)	Port4550N07360W	1:6 000	2023-09-06
CA543MCA (Edn 1.000)	Port4550N07350W	1:6 000	2023-09-06
CA544MAA (Edn 1.000)	Port4560N07370W	1:6 000	2023-09-06
CA544MBA (Edn 1.000)	Port4560N07360W	1:6 000	2023-09-06
CA544MCA (Edn 1.000)	Port4560N07350W	1:6 000	2023-09-06
CA545MBA (Edn 1.000)	Port4570N07360W	1:6 000	2023-09-06
CA545MCA (Edn 1.000)	Port4570N07350W	1:6 000	2023-09-06
CA545MDA (Edn 1.000)	Port4570N07340W	1:2 000	2023-09-06
CA546MDA (Edn 1.000)	Port4580N07340W	1:4 000	2023-09-06
CA546MEA (Edn 1.000)	Port4580N07330W	1:4 000	2023-09-06
CA54AMLA (Edn 1.000)	Port4620N07270W	1:2 000	2023-09-06
CA54BMMA (Edn 1.000)	Port4630N07260W	1:6 000	2023-09-13
CA54BMNA (Edn 1.000)	Port4630N07250W	1:6 000	2023-09-13
CA54BMPA (Edn 1.000)	Port4630N07240W	1:6 000	2023-09-06
CA54CMPA (Edn 1.000)	Port4640N07240W	1:6 000	2023-09-06
CA54EMUA (Edn 1.000)	Port4660N07190W	1:2 000	2023-09-06
CA54FN0A (Edn 1.000)	Port4670N07140W	1:6 000	2023-09-06
CA54FN1A (Edn 1.000)	Port4670N07130W	1:6 000	2023-09-06
CA54FN2A (Edn 1.000)	Port4670N07120W	1:6 000	2023-09-06
CA54GN1A (Edn 1.000)	Port4680N07130W	1:6 000	2023-09-06
CA54GN2A (Edn 1.000)	Port4680N07120W	1:6 000	2023-09-06
CA54LNBA (Edn 1.000)	Port4720N07030W	1:2 000	2023-09-06
CA54LQUA (Edn 1.000)	Port4720N06200W	1:2 000	2023-09-22
CA54LQVA (Edn 1.000)	Port4720N06190W	1:4 000	2023-09-06
CA54NNAA (Edn 1.000)	Port4740N07040W	1:2 000	2023-09-06
CA54PQWA (Edn 1.000)	Port4750N06180W	1:2 000	2023-09-06
CA54PQYA (Edn 1.000)	Port4750N06160W	1:6 000	2023-09-06
CA54QQYA (Edn 1.000)	Port4760N06160W	1:6 000	2023-09-06
CA54SNFA (Edn 1.000)	Port4780N06990W	1:2 000	2023-09-06
CA54SNJA (Edn 1.000)	Port4780N06960W	1:2 000	2023-09-06
CA54UPKA (Edn 1.000)	Port4800N06620W	1:2 000	2023-09-06

S-57 ENC Number	Chart Title	ENC Compilation Scale	Published
CA54UPSA (Edn 1.000)	Port4800N06550W	1:2 000	2023-09-06
CA54UPUA (Edn 1.000)	Port4800N06530W	1:2 000	2023-09-06
CA54UPVA (Edn 1.000)	Port4800N06520W	1:2 000	2023-09-06
CA54VPKA (Edn 1.000)	Port4810N06620W	1:2 000	2023-09-06
CA54VPNA (Edn 1.000)	Port4810N06590W	1:2 000	2023-09-06
CA54WQ0A (Edn 1.000)	Port4820N06480W	1:4 000	2023-09-06
CA54XQ1A (Edn 1.000)	Port4830N06470W	1:6 000	2023-09-06
CA54YMSA (Edn 1.000)	Port4840N07210W	1:2 000	2023-08-29
CA54YMTA (Edn 1.000)	Port4840N07200W	1:4 000	2023-08-29
CA54YQ4A (Edn 1.000)	Port4840N06440W	1:2 000	2023-09-06
CA550MQA (Edn 1.000)	Port4850N07230W	1:2 000	2023-08-29
CA551MNA (Edn 1.000)	Port4860N07250W	1:2 000	2023-08-29
CA551MUA (Edn 1.000)	Port4860N07190W	1:4 000	2023-08-29
CA552MSA (Edn 1.000)	Port4870N07210W	1:2 000	2023-08-29
CA552NPA (Edn 1.000)	Port4870N06910W	1:6 000	2023-09-06
CA553P5A (Edn 1.000)	Port4880N06760W	1:6 000	2023-09-08
CA555PBA (Edn 1.000)	Port4900N06700W	1:4 000	2023-09-08
CA556NYA (Edn 1.000)	Port4910N06820W	1:6 000	2023-09-22
CA556P0A (Edn 1.000)	Port4910N06810W	1:6 000	2023-09-22
CA556PHA (Edn 1.000)	Port4910N06640W	1:2 000	2023-09-06
CA556SUA (Edn 1.000)	Port4910N05540W	1:6 000	2023-09-22
CA557NYA (Edn 1.000)	Port4920N06820W	1:6 000	2023-09-22
CA557P0A (Edn 1.000)	Port4920N06810W	1:6 000	2023-09-22
CA557PVA (Edn 1.000)	Port4920N06520W	1:2 000	2023-09-08
CA558P5A (Edn 1.000)	Port4930N06760W	1:2 000	2023-09-08
CA559P8A (Edn 1.000)	Port4940N06730W	1:2 000	2023-09-06
CA55EPCA (Edn 1.000)	Port4990N06690W	1:6 000	2023-09-08
CA55EPDA (Edn 1.000)	Port4990N06680W	1:6 000	2023-09-08
CA55FPCA (Edn 1.000)	Port5000N06690W	1:6 000	2023-09-08
CA55FPDA (Edn 1.000)	Port5000N06680W	1:6 000	2023-09-08
CA55PRRA (Edn 1.000)	Port5080N05900W	1:6 000	2023-09-08
CA55US9A (Edn 1.000)	Port5130N05730W	1:6 000	2023-09-06
CA55USAA (Edn 1.000)	Port5130N05720W	1:6 000	2023-09-06
CA55VS3A (Edn 1.000)	Port5140N05790W	1:4 000	2023-09-08
CA55VS9A (Edn 1.000)	Port5140N05730W	1:6 000	2023-09-06
CA55VSAA (Edn 1.000)	Port5140N05720W	1:6 000	2023-09-06
New Editions			
CA276821 (Edn 2.000)	Murphy Head to Button Islands	1:100 000	2023-09-29
CA376076 (Edn 2.000)	Cape Tormentine à/to West Point	1:50 000	2023-09-01

S-57 ENC Number	Chart Title	ENC Compilation Scale	Published
CA376243 (Edn 3.000)	Trinity Bay - Northern Portion/Partie Nord	1:30 000	2023-09-29
Charts Permanently Withdrawn			
CA379026	Archipel de Mingan	Cancelled by CA45FQ8A,CA45FPXA	
CA379028	Pointe de Moisie à/to Île du Grand Caoui	Cancelled by CA45FPMA,CA45FPBA,CA455PMA,CA455PBA,CA455P1A	
CA379029	Cap de la Tête au Chien à/to Cap aux Oies	Cancelled by CA44JNEA,CA44JN4A	
CA379093	Pointe Curlew à/to Baie Washtawouka	Cancelled by CA45FQUA	
CA379115	Île du Petit Mecatina aux/to Îles Sainte-Marie	Cancelled by CA45FRFA,CA45FR5A	
CA379131	Baie Piashti à/to Île au Marteau	Cancelled by CA45FQJA,CA45FQ8A	
CA379139	Île à la Brume à/to Pointe Curlew	Cancelled by CA45FR5A,CA45FQUA	
CA379140	Baie Washtawouka à/to Baie Piashti	Cancelled by CA45FQUA,CA45FQJA	
CA379164	Îles Sainte-Marie à/to Île à la Brume	Cancelled by CA45FRFA,CA45FR5A	
CA379216	Iles de la Madeleine	Cancelled by CA44JQUA,CA44JQJA	
CA379232	Île du Bic au/to Cap de la Tête au Chien	Cancelled by CA44UNQA,CA44UNEA,CA44JNEA	
CA476127	Buctouche Harbour	Cancelled by CA376076	
CA476128	Cocagne et/and Shediac	Cancelled by CA376076	
CA476181	Summerside Harbour and Approaches/et les approches	Cancelled by CA376076	
CA479014	Batiscan au/to Lac Saint-Pierre	Cancelled by CA448MHA	
CA479017	Donnacona à/to Batiscan	Cancelled by CA448MTA,CA448MHA	
CA479020	Québec à/to Donnacona	Cancelled by CA448MTA	
CA479021	Cap aux Oies à/to Sault-au-Cochon	Cancelled by CA44JNEA,CA44JN4A	
CA479025	Sault-au-Cochon à/to Québec	Cancelled by CA44JN4A,CA448N4A	
CA479051	Baie des Homards Mouillages/Anchorages	Cancelled by CA455PBA,CA455P1A	
CA479052	Île aux Oeufs Mouillages/Anchorages	Cancelled by CA455P1A	
CA479053	Tadoussac à/to Cap Éternité	Cancelled by CA44UNEA,CA44UN4A	
CA479057	Mont-Louis	Cancelled by CA455PMA	
CA479058	Sainte-Anne-des-Monts	Cancelled by CA455PBA	

S-57 ENC Number	Chart Title	ENC Compilation Scale	Published
CA479078	Cap Éternité à/to Cap à l'Est	Cancelled by CA44UN4A	
CA479082	Continuation A - Sault-au-Cochon à/to Québec	Cancelled by CA44JN4A,CA448N4A,CA448MT A	
CA479087	Ile St-Louis à Cap Éternité - Continuation A	Cancelled by CA44UNEA,CA44UN4A	
CA479094	Cap à l'Est à Saint-Fulgence - Continuation A	Cancelled by CA44UN4A	
CA479099	Chenal du Bic et les approches/and approches	Cancelled by CA44UNQA	
CA479129	Lac Saint-Pierre	Cancelled by CA448MHA,CA448M7A	
CA479137	Baie Coacoachou	Cancelled by CA45FR5A	
CA479155	Sorel à/to Varennes	Cancelled by CA448M7A,CA43XM7A	
CA479202	Lac Saint-Louis à/to Carillon	Cancelled by CA43XM7A,CA43XLWA	
CA479210	Laval à/to Baie de Vaudreuil	Cancelled by CA43XM7A,CA43XLWA	
CA479228	Lac Saint-Louis	Cancelled by CA43XM7A,CA43XLWA	
CA479247	Blanc Sablon à/to Baie de Bonne-Espérance	Cancelled by CA45RS2A	
CA479249	Baie de Bonne-Espérance à/to Île Mistanoque	Cancelled by CA45RS2A,CA45RRRA	
CA479257	Continuation A	Cancelled by CA45RRRA	
CA479259	Îles Mack à/to La Tabatière	Cancelled by CA45RRRA,CA45RRFA,CA45FRRA,CA45FRFA	
CA479261	La Tabatière à/to Île du Gros Mécatina (Ouest/West)	Cancelled by CA45FRRA,CA45FRFA	
CA479263	Île Mistanoque aux/to Îles Mack (Ouest/West)	Cancelled by CA45RRRA	
CA479264	Île Mistanoque aux/to Îles Mack (Est/East)	Cancelled by CA45RRRA	
CA479265	La Tabatière à/to Île du Gros Mécatina (Est/East)	Cancelled by CA45FRRA,CA45FRFA	
CA576659	Botwood	Cancelled by CA556SUA	
CA579001	Port de Montréal - Repentigny à/to Montréal Est	Cancelled by CA545MCA,CA544MCA,CA544MBA	
CA579003	Port de Québec	Cancelled by CA54GN2A,CA54GN1A,CA54FN2A,CA54FN1A	
CA579015	Port de Trois-Rivières	Cancelled by CA54BMNA,CA54BMMA	
CA579016	Port de Bécancour	Cancelled by CA54CMPA,CA54BMMA	

S-57 ENC Number	Chart Title	ENC Compilation Scale	Published
CA579019	Portneuf	Cancelled by CA54EMUA	
CA579022	Saint-Joseph-de-la-Rive	Cancelled by CA54NNAA	
CA579023	L'Isle-aux-Coudres	Cancelled by CA54NNAA	
CA579024	Saint-Jean-Port-Joli	Cancelled by CA54LNBA	
CA579031	Pointe de la Rivière du Loup	Cancelled by CA54SNJA	
CA579033	Saint-Siméon	Cancelled by CA54SNFA	
CA579038	Godbout	Cancelled by CA558P5A	
CA579039	Forestville	Cancelled by CA552NPA	
CA579040	Matane	Cancelled by CA553P5A	
CA579047	Port-Cartier	Cancelled by CA55FPDA,CA55FPCA,CA55EPDA,CA55EPCA	
CA579048	Baie-Comeau	Cancelled by CA557P0A,CA557NYA,CA556P0A,CA556NYA	
CA579056	Les Méchins	Cancelled by CA555PBA	
CA579060	Carleton	Cancelled by CA54VPKA,CA54UPKA	
CA579061	Bonaventure	Cancelled by CA54UPSA	
CA579062	L'Anse-à-Beaufils	Cancelled by CA54YQ4A	
CA579064	Sainte-Thérèse-de-Gaspé	Cancelled by CA54YQ4A	
CA579067	Newport Point	Cancelled by CA54WQ0A	
CA579071	Chandler	Cancelled by CA54XQ1A	
CA579074	Quai / Wharf Paspébiac-Ouest	Cancelled by CA54UPUA	
CA579080	Port de Montréal-Montréal Est to/à Pont Victoria	Cancelled by CA544MCA,CA544MBA,CA543MCA,CA543MBA,CA542MCA,CA542MBA	
CA579081	Port de Québec - Continuation A	Cancelled by CA54FN1A,CA54FN0A	
CA579084	Chenal du Havre de la Grande Entrée	Cancelled by CA54QQYA,CA54PQYA	
CA579101	Grosse-Île-nord	Cancelled by CA54QQYA	
CA579105	Saint-Godefroi	Cancelled by CA54UPVA	
CA579145	Rivière Nicolet	Cancelled by CA54AMLA	
CA579146	Vercheres	Cancelled by CA545MDA	
CA579156	Terminal de Contrecoeur	Cancelled by CA546MEA,CA546MDA	
CA579169	Petite-Tourelle	Cancelled by CA556PHA	
CA579170	L'Anse-à-la-Cabane	Cancelled by CA54LQUA	

S-57 ENC Number	Chart Title	ENC Compilation Scale	Published
CA579173	Île Bizard à Pont-Viau, partie A-B	Cancelled by CA543M9A, CA543M8A, CA543M7A, CA542M9A, CA542M8A, CA542M7A	
CA579176	Île Bizard à/to Pont-Viau B-C	Cancelled by CA543MAA, CA543M9A	
CA579177	Pont-Viau à/to Île Bourdon C-D	Cancelled by CA544MAA, CA543MAA	
CA579178	Pont-Viau à/to Île Bourdon D-E	Cancelled by CA544MBA, CA544MAA	
CA579180	Pont-Viau à/to Île Bourdon E-F	Cancelled by CA545MCA, CA545MBA, CA544MCA, CA544MBA	
CA579183	Roberval	Cancelled by CA550MQA	
CA579185	Desbiens	Cancelled by CA54YMTA	
CA579186	Chambord	Cancelled by CA54YMSA	
CA579192	Péribonka	Cancelled by CA552MSA	
CA579194	Saint-Félicien	Cancelled by CA551MNA	
CA579196	Saint-Henri-de-Taillon	Cancelled by CA551MUA	
CA579205	Sainte-Placide	Cancelled by CA543M4A	
CA579206	Pointe aux Anglais	Cancelled by CA542M5A	
CA579207	Oka	Cancelled by CA542M6A	
CA579208	Hudson	Cancelled by CA542M5A	
CA579212	Havre-Aubert	Cancelled by CA54LQVA	
CA579213	Grande-Vallée	Cancelled by CA557PVA	
CA579220	Pointe-aux-Loups	Cancelled by CA54PQWA	
CA579224	Mouillage St-Nicolas	Cancelled by CA54FN0A	
CA579227	Canal de la Rive Sud	Cancelled by CA543MCA, CA543MBA, CA543MAA, CA543M9A, CA542MCA, CA542MBA, CA542MAA, CA542M9A, CA541M9A	
CA579229	Rapides de Vaudreuil	Cancelled by CA541M7B, CA541M6B	
CA579230	Sainte-Anne-de-Bellevue	Cancelled by CA542M7A, CA541M7B	
CA579244	Baie-Trinité	Cancelled by CA559P8A	
CA579248	Blanc-Sablon	Cancelled by CA55VSAA, CA55VS9A, CA55USAA, CA55US9A	
CA579252	Vieux-Fort	Cancelled by CA55VS3A	
CA579254	New Richmond	Cancelled by CA54VPNA	
CA579260	Baie de la Tabatière	Cancelled by CA55PRRA	

***902/23 Transport Canada – Whale Protection Measures in Squally Channel, Lewis Pass, Wright Sound, Whale Channel, and lower Douglas & Grenville Channels**

PURPOSE & BACKGROUND

Exceptional numbers of whales have been reported in Squally Channel, Lewis Pass, Cridge Passage, Wright Sound, Whale Channel, and lower Douglas & Grenville Channels.

REQUESTED MEASURES

Mariners are requested to exercise caution in the area and take measures to reduce whale strikes, particularly in low visibility conditions: reduce speed if safe, and enhance watch if possible.

Nothing in these requested measures prevents or limits the master or pilot of a vessel from making any decisions to protect the vessel, the crew, or the marine environment.

***903/23 Canadian Coast Guard – Modified Notices to Mariners Email Address**

Please note that the email address of the Notices to Mariners (NOTMAR) has changed to DFO.Notmar-Notmar.MPO@dfo-mpo.gc.ca. Please use this new email address to send any comments, questions or requests in the future.

***911/23 Shuswap Lake – Daybeacon Permanently Discontinued**

Reference chart: 3053

The following daybeacon has been permanently discontinued:

Aid Name	LL #	Position
Tappen Bay Daybeacon	5686	50° 46' 38.0"N 119° 19' 24.0"W

(P2023-046)

***912/23 North Pender Island to/à Thetis Island – Daybeacon Permanently Changed**

Reference chart: 3442

The following daybeacon has been permanently changed:

Aid Name	LL #	Position	Changes
Escape Reef Daybeacon	5169	48° 56' 26.7"N 123° 39' 45.7"W	The aid type has changed from starboard to starboard bifurcation.

(P2023-010)

Section 1A: Temporary and Preliminary Notices

Reminder – Comment Period for Active Preliminary Notices

This is a reminder that the comment period is still open for the following active Preliminary notices:

Notice #	Reference Chart #	Aids Affected (LL #)	Intent of Notice
Pacific Coast			
714(P)/23	3980	622	Notice of Proposed Changes

Please refer to the [Notices to Mariners - Monthly Summary of Temporary and Preliminary Notices](#) publication for details.

Inland Waters

Temporary Notices

No notices applicable for this edition.

Preliminary Notices

No notices applicable for this edition.

Pacific Coast

Temporary Notices

No notices applicable for this edition.

Preliminary Notices

No notices applicable for this edition.

Section 2: Chart Corrections

3424 - Approaches to/Approches à Oak Bay - New Edition - 12-SEP-2003 - NAD 1983 15-SEP-2023

LNMD. 14-APR-2023

Delete harbour limit and legend VICTORIA between 48°23'40.2"N 123°18'17.4"W
(See Chart 1, N49) and 48°23'32.3"N 123°20'31.9"W
This notice affects Electronic Navigational Chart: CA570101, CA570214
DFO(6204801-02)

3461 - Juan de Fuca Strait, Eastern Portion/Partie Est - New Edition - 01-JUL-2005 - NAD 1983 15-SEP-2023

LNMD. 30-JUN-2023

Delete harbour limit and legend ESQUIMALT between 48°25'22.5"N 123°25'08.4"W
(See Chart 1, N49) and 48°25'22.5"N 123°27'57.4"W
DFO(6204801-01)

Delete harbour limit and legend VICTORIA between 48°23'41.1"N 123°18'16.4"W
(See Chart 1, N49) and 48°23'05.6"N 123°28'50.2"W
This notice affects Electronic Navigational Chart: CA570101, CA570214
DFO(6204801-02)

Add harbour limit and legend ESQUIMALT joining 48°23'02.3"N 123°28'46.4"W
(See Chart 1, N49) 48°23'12.6"N 123°25'12.6"W
and 48°25'19.3"N 123°25'11.0"W
DFO(6204801-03)

3462 - Juan de Fuca Strait to/à Strait of Georgia - New Edition - 01-JUL-2005 - NAD 1983 15-SEP-2023

LNMD. 16-JUN-2023

Delete harbour limit and legend ESQUIMALT between 48°25'22.5"N 123°25'08.4"W
(See Chart 1, N49) and 48°25'22.5"N 123°27'57.4"W
DFO(6204801-01)

Delete harbour limit and legend VICTORIA between 48°23'41.1"N 123°18'16.4"W
(See Chart 1, N49) and 48°23'03.5"N 123°28'46.7"W
This notice affects Electronic Navigational Chart: CA570101, CA570214
DFO(6204801-02)

Add harbour limit and legend ESQUIMALT joining 48°23'02.3"N 123°28'46.4"W
(See Chart 1, N49) 48°23'12.6"N 123°25'12.6"W
and 48°25'19.3"N 123°25'11.0"W
DFO(6204801-03)

3490 - Fraser River/Fleuve Fraser, Sand Heads to/à Douglas Island, Compartment A-B - New Edition - 02-NOV-2012 - World Geodetic System 1984

01-SEP-2023

LNMD. 23-DEC-2022

Affix patch 49°08'00.0"N 123°02'00.0"W
Download Patch - https://www.notmar.gc.ca/chsftp/patches/3490_6204799_1_202308021017.pdf
This notice affects Electronic Navigational Chart: CA570015
DFO(6204799-01)

3490 - Fraser River/Fleuve Fraser, Sand Heads to/à Douglas Island, Compartment B-C - New Edition - 02-NOV-2012 - World Geodetic System 1984

01-SEP-2023

LNMD. 23-DEC-2022

Add Dolphin with light Fl Y 49°08'25.0"N 123°03'15.0"W
(See Chart 1, F20, P1)
This notice affects Electronic Navigational Chart: CA570015
DFO(6204799-02)

6217 - Ptarmigan Bay and/et Shoal Lake - Sheet/Feuille 2 - New Edition - 01-MAR-2002 - NAD 1983

01-SEP-2023

LN/D. 02-JUN-2023

Delete green port hand lighted spar buoy, marked WB1
(See Chart 1, Qc)

49°41'52.0"N 094°49'03.0"W

LL(1494.6) DFO(6605126-01)

Section 3: Radio Aids to Marine Navigation Corrections

*919/23 Radio Aids to Marine Navigation 2023 (Atlantic, St. Lawrence, Great Lakes, Lake Winnipeg, Arctic and Pacific)

Page 1-1

DELETE THE FOLLOWING SECTION:

1.1.1 Marine Mammal Protection

Working in collaboration with other government departments/agencies, Canadian Coast Guard's (CCG) Marine Communications and Traffic Services (MCTS) Centres are monitoring vessel traffic for compliance with new measures toward the protection of marine mammals.

Note: Roseway Basin Seasonal Area is to be avoided. In order to significantly reduce the risk of ship strikes of the highly endangered North Atlantic Right Whale, it is recommended that ships of 300 tons gross tonnage and upwards in transit during the period of June 1st through December 31st should avoid this area. Any sightings are to be reported to Halifax MCTS.

Note: Grand Manan Basin is to be avoided. In order to significantly reduce the risk of ship strikes of the highly endangered North Atlantic Right Whale, it is recommended that ships of 300 tons gross tonnage and upwards in transit during the period of June 1st through December 31st should avoid this area. Any sightings are to be reported to Halifax MCTS.

Note: There are mandatory seasonal (April 28th – November 15th) measures in the western Gulf of St. Lawrence for vessels greater than 13 m in length overall to help reduce the risk of vessel collisions with the endangered North Atlantic Right Whale. These measures are described in Canadian Coast Guard's Notice to Mariners (NOTMAR) and in Transport Canada's Ship Safety Bulletin (SSB). Navigational warnings are issued and broadcast, advising vessels of areas subject to speed restrictions. Mariners are requested to report all whale sightings, and observations of entangled, dead, or injured whales to the nearest MCTS Centre.

REPLACE WITH THE FOLLOWING:

1.1.1 Marine Mammal Protection

Working in collaboration with other government departments and agencies, Canadian Coast Guard's (CCG) Marine Communications and Traffic Services (MCTS) Centres are monitoring vessels for compliance with measures for the protection of marine mammals. Vessels of 13m or more in length are to comply with relevant Interim Orders, Ship Safety Bulletins, and Notices to Mariners with regard to the protection of the North Atlantic Right Whale and Southern Resident killer whale.

1.1.1.1 North Atlantic Right Whale

Up to date Navigational Warning (NAVWARN) information with regard to Static Zones, Dynamic Shipping zones, Seasonal Management Areas and the Shediac Valley Restricted Area is available at the [Navigational Warnings website](#)

1.1.1.2 Southern Resident Killer Whale

- a) Speed Restricted Zone NAVWARN (Effective June 1, 2023 until November 30, 2023) information is available in the [SRZ Navigational Warning](#).
- b) Interim Sanctuary Zone NAVWARN (Effective June 1, 2023 until November 30, 2023) information is available in the [ISZ Navigational Warning](#).
- c) 400 Metres Approach Distance and Ban Against Positioning Vessel in Path of a Killer Whale remain in effect until May 31, 2024.

Note: Roseway Basin Seasonal Area is to be avoided. In order to significantly reduce the risk of ship strikes of the highly endangered North Atlantic Right Whale, it is recommended that ships of 300 tons gross tonnage and upwards in transit during the period of June 1st through December 31st should avoid this area. Any sightings are to be reported to Halifax MCTS.

Page 1-1, 1-2

DELETE THE FOLLOWING SECTIONS:

1.1.2. Iridium SafetyCast Service

The International Maritime Organization (IMO) and the International Hydrographic Organization (IHO) announced the establishment of the Iridium SafetyCast Service as a recognized mobile satellite service in the Global Maritime Distress and Safety System (GMDSS).

1.1.2.1 NAVAREAs XVII and XVIII

Effective May 1st 2022, the Iridium SafetyCast Service for broadcasting navigational warnings in the English language will be declared to be “Operational” for Canada’s Arctic NAVAREAs XVII and XVIII.

All navigational warnings will be broadcast in accordance with the Revised Joint IMO/IHO/WMO Maritime Safety Information Manual and promulgated in a timely and appropriate manner.

NAVAREAs XVII and XVIII will broadcast Iridium SafetyCast messages to vessels with an approved SafetyCast receiver. On vessels with Iridium GMDSS terminals installed, mariners are advised to check their manufacturer’s operation manuals to obtain information on the setting of their SafetyCast receivers to receive relevant SafetyCast messages.

1.1.2.2 METAREAs XVII and XVIII, and the Hudson Bay Area of METAREA IV

Effective May 1st 2022, the Iridium SafetyCast Service for broadcasting of meteorological warnings, meteorological forecasts and ice information in the English language will be declared to be “Operational” for Canada’s Arctic METAREAs XVII and XVIII, and the Hudson Bay area of METAREA IV.

All meteorological warnings, meteorological forecasts and ice information will be broadcast in accordance with the Revised Joint IMO/IHO/WMO Maritime Safety Information Manual and promulgated in a timely and appropriate manner.

METAREAs XVII and XVIII will broadcast Iridium SafetyCast messages, including messages for the Hudson Bay area of METAREA IV, to vessels with an approved SafetyCast receiver. On vessels with Iridium GMDSS terminals installed, mariners are advised to check their manufacturer’s operation manuals to obtain information on the setting of their SafetyCast receivers to receive relevant SafetyCast messages.

Page 4-62

MODIFY AS FOLLOWS:

4.3.3.1 NAVAREAS XVII and XVIII: Navigational Warnings

The Canadian Coast Guard has assumed responsibility of NAVAREA coordination for NAVAREAs XVII and XVIII as part of the World-Wide Navigational Warning Service (WWNWS).

Under the WWNWS, navigational warnings containing urgent information relevant to safe navigation that are broadcast in accordance with the Chapter IV of the International Convention for the Safety of Life at Sea (SOLAS).

NAVAREA warnings, which contain information specific to ocean going mariners, remain in force until cancelled or promulgated by other means.

NAVAREA XVII and XVIII warnings that are less than 42 days old are promulgated via SafetyNET II and SafetyCast.

The complete text of all In-Force NAVAREA warnings is available from the Canadian Coast Guard website: ~~[Search – Canadian Coast Guard \(ccg-gcc.gc.ca\)](http://www.ccg-gcc.gc.ca)~~ [Search for NAVAREAs \(ccg-gcc.gc.ca\)](http://www.ccg-gcc.gc.ca)

Alternatively, these may be requested by forwarding an email to the NAVAREA Operations desk at: navarea17.18@innav.gc.ca.

Section 4: Canadian Sailing Directions Corrections

The following **Canadian Sailing Directions** volumes have recently been updated on the [Canadian Hydrographic Service website](#).

No.	Title
Atlantic Coast	
ATL109	Gulf of St. Lawrence (Northeast Portion)
ATL110	St. Lawrence River, Cap Whittle / Cap Gaspé to Les Escoumins and Anticosti Island
ATL111	St. Lawrence River, Île Verte to Québec and Fjord du Saguenay
ATL112	St. Lawrence River, Cap-Rouge to Montréal and Rivière Richelieu
Northern Canada	
ARC403	Western Arctic

Each volume includes a section entitled “Record of Changes” which lists all updates that are incorporated during the current calendar year.

Section 5: List of Lights, Buoys and Fog Signals Corrections

The amendments are highlighted and deletions are crossed out. For general and region-specific information on the List of Lights, click on the following links: [Newfoundland and Labrador Coast](#), [Atlantic Coast](#), [Inland Waters](#) and [Pacific Coast](#).

No.	Name	Position ----- Latitude N. Longitude W.	Light Characteristics	Focal Height in m. above water	Nomi- nal Range	Description ----- Height in meters above ground	Remarks ----- Fog Signals
-----	------	--------------------------------------------------	--------------------------	--------------------------------------------	-----------------------	----------------------------------------------------------	---------------------------------

PACIFIC COAST

QUEEN CHARLOTTE STRAIT (LL 554 – 569)

555.8 G5628.7	Lizard Point	NE. side, Malcolm Island. 50 40 17.2 126 53 41.1	Fl W 4s	6.4	7	White square skeleton tower.	Radar reflector. Year round.
							Chart:3546 Edn 09/23 (P23-035)