



Fisheries and Oceans
Canada

Pêches et Océans
Canada

Canadian
Coast Guard

Garde côtière
canadienne



VOL. 34, MONTHLY EDITION N° 02
February 27, 2009

Publication Number 40063779

NOTICES TO MARINERS PUBLICATION EASTERN EDITION

Published monthly by the
CANADIAN COAST GUARD

This publication is available electronically at:
<http://www.notmar.gc.ca/subscribe/>

CONTENTS

	Page
Section 1 Safety and General Information	1 - 3
Section 2 Chart Corrections.....	4 - 22
Section 3 Corrections to Radio Aids to Marine Navigation.....	NIL
Section 4 Sailing Directions and Small Craft Guide Corrections.....	23 - 26
Section 5 List of Lights, Buoys and Fog signals Corrections	27 - 30

Maritime Services Directorate
Aids to Navigation



EXPLANATORY NOTES

Geographical positions refer directly to the graduations of the largest scale Canadian Hydrographic chart unless otherwise indicated.

Bearings refer to the true compass and are measured clockwise from 000° (North) clockwise to 359°; those relating to lights are from seaward.

Visibility of lights is that in clear weather.

Depths - The units used for soundings (metres, fathoms or feet) are stated in the title of each chart.

Elevations are normally given above Higher High Water, Large Tides unless otherwise indicated.

Distances may be calculated as follows:

1 nautical mile	= 1 852 metres (6,076.1 feet)
1 statute mile	= 1 609.3 metres (5,280 feet)
1 metre	= 3.28 feet

Temporary & Preliminary Notices are indicated by a (T) or a (P) before the chart action. Please note that Nautical charts are not hand amended by the Canadian Hydrographic Service for Temporary (T) and Preliminary (P) Notices. It is recommended that mariners chart these corrections in pencil. Listing of charts affected by Temporary and Preliminary Notices are revised and promulgated quarterly in Section 1 of the Monthly Edition.

Please note that, in addition to the temporary and preliminary changes normally advertised as (T) and (P) Notices, there are a few permanent changes to navigational aids that have been advertised as Preliminary Notices to Mariners while charts are being updated for new editions.

Marine Information Report & Suggestion Sheet - Mariners are requested to notify the responsible authorities when new or suspected dangers to navigation are discovered, changes observed in aids to navigation or corrections to publications are seen to be necessary. Such communications can be made using the *Marine Information Report & Suggestion Sheet* inserted on the last page of each monthly edition of *Notices to Mariners*.

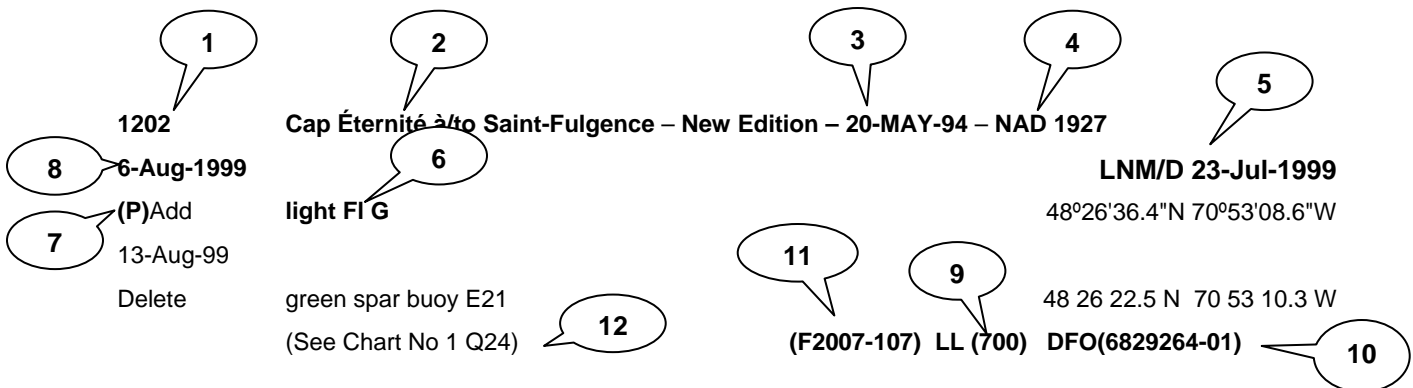
Monthly edition of Notices to Mariners - *Notices to Mariners* are issued free of charge on a monthly basis. Mariners now have a choice between specific *Regional* issue(s) they wish to receive. Requests to be placed on or removed from the mailing list should be made by using the form inserted on page iii of each monthly edition. Notification of changes to the mailing addresses, regional issues and/or number of copies required should also be transmitted by means of this form.

Canadian Nautical Charts & Publications - A source list of *Canadian Nautical Charts & publications* is published in Notice No. 14 of the *Notices to Mariners Annual Edition April 2008*. The source supply and the prices effective at the time of printing are listed. For current chart edition dates refer to the following web site: <http://www.chs-shc.gc.ca/pub/en/products/core.cfm>

NOTE: Cette publication est aussi disponible en français.

CHART CORRECTIONS - SECTION 2

Corrections to nautical charts will be listed in numeric order by chart number. Each chart correction listed applies only to that particular chart. Related charts, if any, will have their own specific correction listed separately. Users should also refer to CHS Chart 1 Symbols, Abbreviations Terms for additional information pertaining to the correction of charts. The illustration below describes the elements that will comprise a typical Section 2 chart correction.



1 - Chart Number

2 - Chart Title

3 - Chart's latest New Edition date

4 - Horizontal Chart Datum

5 - Last Correction

6 - Chart action

7 - Notice type

8 - Weekly chart correction date

9 - List of light number

10 - CHS record reference number

11 - CCG Record reference number

12 - Chart No 1 reference number

The last correction number is identified with the **LNM/D** or **Last Notice to Mariners Number / Date**. This number is expressed in either old notice number format (ex.: 594/99) or in day-month-year format which is the date known as the weekly chart correction date shown in the above diagram as item (8).

ADVISORY

NOTICES TO SHIPPING (WRITTEN AND BROADCAST)

The Canadian Coast Guard is implementing a number of changes to the aids to navigation system in Canada.

These changes are advertised as Notices to Shipping (Broadcast and Written) by the Canadian Coast Guard and are followed up with Notices to Mariners, then charts are updated by hand correction, reprints or new editions.

Mariners are advised that all relevant Written Notices to Shipping should be kept until superseded by Notices to Mariners or through revised charts issued by the Canadian Hydrographic Service.

Written Notices to Shipping are published weekly and are available from local Canadian Coast Guard Offices.

The Canadian Hydrographic Service is reviewing the impact of these changes with the Canadian Coast Guard and together we are preparing an action plan on the issuing of chart revisions.

For further information contact your local Regional Notices to Shipping (Notships) issuing authorities.

Newfoundland

Fisheries and Oceans Canada,
Canadian Coast Guard,
St. John's MCTS Centre
P.O. Box 5667
ST JOHN'S NL A1C 5X1
Telephone: 709 772-2083 / 2106
Facsimile: 709 772-5369

Quebec

* Fisheries and Oceans Canada,
Canadian Coast Guard,
Regional Operations Centre (ROC)
101 Champlain Boulevard
QUEBEC QC G1K 7Y7
Telephone: 418 648-5410 / 4427
Facsimile: 418 648-7244
Web site: www.marinfo.gc.ca

Maritimes

* Fisheries and Oceans Canada
Canadian Coast Guard
Sydney MCTS Centre
P.O. Box 8630
SYDNEY, N.S. B1P 6K7
Telephone: 902-564-7751 or 1-800-686-8676
Facsimile: 902-564-2446
Email: notshipssyd@mar.dfo-mpo.gc.ca

Central & Arctic

* Fisheries and Oceans Canada,
Canadian Coast Guard,
Sarnia MCTS Centre
215 - 105 Christina Street
SARNIA ON N7T 7W1
Telephone: 519 337-6360 or 1-800-265-0237
Facsimile: 519 337-2498

* Fisheries and Oceans Canada,
Canadian Coast Guard,
Iqaluit MCTS Centre
P.O. Box 189
IQALUIT NU X0A 0H0
Telephone: 867-979-5269
Facsimile: 867-979-4264

* Services provided in English and French

MONTHLY EDITION OF NOTICES TO MARINERS

MAILING LIST CHANGES

I WISH TO CONTINUE RECEIVING THE PAPER COPY OF THE NOTICE

Leader, Notices to Mariners
Navigation Aids
Navigation Systems
Canadian Coast Guard
200 Kent Street, Station 5N186
Ottawa, ON
K1A 0E6

Telephone (613) 993-6974
Facsimile (613) 998-8428
Internet www.notmar.gc.ca

Please indicate which edition you would like to receive.

EASTERN EDITION (Comprised of Arctic, Newfoundland, Maritimes, Gulf & River St. Lawrence and Central areas)_____

WESTERN EDITION (Comprised of Arctic and Pacific areas)_____

ADD ____ **AMEND** ____ **REMOVE** ____ **NO. OF COPIES** _____

OLD ADDRESS	
NAME	
STREET	APT.
CITY	POSTAL CODE
PROVINCE	COUNTRY
NEW ADDRESS	
NAME	
STREET	APT.
CITY	POSTAL CODE
PROVINCE	COUNTRY

ID number above address on label

or

Attach complete address label to this sheet

INDEX

CANADIAN HYDROGRAPHIC SERVICE - ANNOUNCEMENT REGARDING CANADIAN HYDROGRAPHIC SERVICE CHART PATCHES.....	1
CANADIAN HYDROGRAPHIC SERVICE - CUMULATIVE CHART CORRECTIONS.	1
CANADIAN HYDROGRAPHIC SERVICE - CURRENT CHART EDITION DATES.	1
CANADIAN HYDROGRAPHIC SERVICE - PRINT ON DEMAND CHARTS - CARE AND USE.....	1
*202 CANADIAN HYDROGRAPHIC SERVICE – ELECTRONIC NAVIGATIONAL CHARTS.....	2
*201 CANADIAN HYDROGRAPHIC SERVICE - NAUTICAL CHARTS.....	2
*203 CANADIAN HYDROGRAPHIC SERVICE - NON EQUIVALENT ELECTRONIC NAVIGATIONAL CHARTS.....	2
*204 TRANSPORT CANADA - SHIP SAFETY BULLETIN.....	3

NUMERICAL INDEX OF CANADIAN CHARTS AFFECTED

Chart No.	Page	Chart No.	Page	Chart No.	Page
1220	4	4236	12	L/C 4841	19,20
1221	4	4237	12	4905	20
1230	4	4241	12,13	4956	20,21
1235	4	L/C 4242	13	6100	21
1236	4,5	4243	13	8048	21
1313	5	4281	13	8049	22
1314	5,6	4307	13		
1410	6	4321	13		
1509	6	4335	13		
1510	6	4385	14		
1515	7	L/C 4406	14,15		
4001	7	4448	15		
4002	7,8	4462	15		
4003	8	4468	15		
4010	8	4470	15		
4011	8	4485	15		
4012	8	4498	16		
4013	9	4512	16		
4015	9	4622	16		
4016	9,10	L/C 4624	16		
4020	10	4625	16,17		
4124	10	4626	18		
4202	10	4644	18		
L/C 4227	10	4669	18		
L/C 4230	11	4731	18		
4233	11	4830	18,19		
4234	11,12	L/C 4832	19		

**SECTION 1 – Edition 02/2009
SAFETY AND GENERAL INFORMATION**

CANADIAN HYDROGRAPHIC SERVICE - ANNOUNCEMENT REGARDING CANADIAN HYDROGRAPHIC SERVICE CHART PATCHES.

CHS is introducing a new initiative with a full colour Patch on the Web. A link in the Notices to Mariners web site will be provided so clients can access the colour Patch. The colour Patch will be published in HTML and PDF format. Providing the Patches in colour (accessible to all via remote access to the Web) is an enhanced form of alternative service delivery in line with CHS strategic objectives.

Colour Web Patches are free to the mariner, and given the quality of many printers, should reproduce well. They will be available in real time all around the world which is an improvement since clients had to wait for the paper copy to be mailed.

Previously, in the *Notices to Mariners* (NTM) booklet, Patches were produced in full colour or a minimum of black and magenta.

Due to current budgetary constraints, Patches will now only be produced in black and white for publication in the NTM booklet.

Our level of service will change with this initiative and CHS intends to analyze market reaction to this innovation.

CHS welcomes your feedback on this new service at chsinfo@df-mpo.gc.ca

CANADIAN HYDROGRAPHIC SERVICE - CUMULATIVE CHART CORRECTIONS.

The cumulative Notice to Mariners corrections for charts can now be accessed at http://www.notmar.gc.ca/search/notmar_e.php

CANADIAN HYDROGRAPHIC SERVICE - CURRENT CHART EDITION DATES.

CHART EDITIONS

The three terms described below are used to indicate the publication status of Canadian charts.

NEW CHART - "NEWCHT"

The first publication of a Canadian chart embracing an area not previously charted to the scale shown, or embracing an area different from any existing Canadian chart.

NEW EDITION - "NEWEDT"

A new issue of an existing chart containing amendments essential to navigation in addition to those issued in Notice to Mariners and making existing editions obsolete.

REPRINTS

A new issue of the current edition of a chart incorporating no amendments of navigational significance other than those previously promulgated in Notice to Mariners. It may also contain amendments from other sources provided they are not essential to navigation. Previous printings of the current edition remain in force.

The current chart edition dates can now be accessed at <http://www.chs-shc.gc.ca/pub/en/products/core.cfm>

CANADIAN HYDROGRAPHIC SERVICE - PRINT ON DEMAND CHARTS - CARE AND USE.

Background

By providing nautical charts to the public, the goal of the Canadian Hydrographic Service (CHS) is to provide services for safe navigation in a fiscally responsible manner. As a result, CHS continues to expand its portfolio of nautical paper charts that are printed using Print On Demand (POD) technology. These charts are easily recognized by their whiter paper and the coloured logo of the Canadian Hydrographic Service. This new technology enables CHS to print charts in a more efficient manner while enhancing chart content through being able to quickly add new and important information. POD technology provides customers with up-to-date charts without the historical hand-drawn corrections or glued-on patches. Additionally, this technology eliminates out-of-stock situations which arise with the traditional printing and warehousing methods. In the event of a national emergency, CHS can respond to the appropriate authorities with best available information very quickly.

**SECTION 1 – Edition 02/2009
SAFETY AND GENERAL INFORMATION**

Care of Your POD Chart

CHS encourages its customers to handle the POD charts more carefully than the traditional lithographic charts. When plotting information on POD charts, use HB pencils and apply limited pressure. Testing has suggested that an Indian gum eraser is more effective than alternatives when used on the product. This eraser is also suitable for charts printed using lithographic processes.

***201 CANADIAN HYDROGRAPHIC SERVICE - NAUTICAL CHARTS.**

CHARTS	MAIN TITLE	PUBLISHED	CAT#	PRICE
CAT-3	Catalogue of Nautical Charts and Publications Ontario/Manitoba Including the Great Lakes Catalogue des Cartes et Publications Nautiques Ontario/Manitoba Incluant les Grands Lacs	30-SEP-2008	3	\$0.00

***202 CANADIAN HYDROGRAPHIC SERVICE – ELECTRONIC NAVIGATIONAL CHARTS.**

RELEASED PRODUCTS	CHART TITLE
S-57 ENC NUMBER	
CA570226	Ucluelet Inlet
CA570227	BAMFIELD INLET
CA570229	Fatty Basin
CA573362	Hamilton Harbour
CA573363	Hamilton Yacht Clubs / Clubs nautiques de Hamilton
CA579084	Chenal du Havre de la Grande Entrée
CA579085	Quai / Wharf Mines Seleine
CA579096	Blanc-Sablon
CA579097	Quai / Wharf Blanc-Sablon
CA470019	Cordero Channel
CA470031	Queen Charlotte Strait, Central Portion/Partie Centrale
CA470087	Spiller Channel and/et Roscoe Inlet
CA470349	Burke Channel
CA470387	Queens Sound and Approaches/et les approches (Part 3 of 3)
CA273259	Lancaster Sound, Admiralty Inlet, and Stathcona Sound and Adams Sound
CA376120	Conception Bay
CA376134	Neguac Bay (Continuation A)
CA376289	Sable Island/Ile de Sable
CA376295	Red Point to Guyon Island
CA479006	Baie des Sept-Îles
CA579007	Pointe Noire

***203 CANADIAN HYDROGRAPHIC SERVICE - NON EQUIVALENT ELECTRONIC NAVIGATIONAL CHARTS.**

Note: The following ENC products are not equivalent to the current editions of their corresponding paper charts and should not be used as a replacement.

NON EQUIVALENT PRODUCTS		
S-57 ENC NUMBER	PAPER CHART NUMBER	CHART TITLE
CA176030	4001	Gulf of Maine to Strait of Belle Isle au Détroit de Belle Isle
CA376093	4367	Flint Island to/à Cape Smoky

**SECTION 1 – Edition 02/2009
SAFETY AND GENERAL INFORMATION**

NON EQUIVALENT PRODUCTS		
S-57 ENC NUMBER	PAPER CHART NUMBER	CHART TITLE
CA376164	4625	Burin Peninsula to/à Saint-Pierre
CA376187	4486	Baie des Chaleurs / Chaleur Bay
CA376248	4403	East Point to/à Cape Bear
CA376272	4279	Bras D'Or Lake
CA376340	4854	Catalina Harbour to/à Inner Gooseberry Islands
CA476043	4210	Cape Sable to/a Pubnico Harbour
CA476073	4845	Fermeuse Harbour
CA476179	4466	Hillsborough Bay
CA476202	4211	Cape Lahave to/à Liverpool Bay
CA476327	4596	Bay of Exploits Sheet/feuille II (Middle/centre)
CA476328	4597	Bay of Exploits Sheet/feuille III (South/sud)
CA576002	4203	Halifax Harbour - Black Point to/à Point Pleasant
CA576040	4209	Lockeport Harbour
CA576072	4845	Lumley Cove

***204 TRANSPORT CANADA - SHIP SAFETY BULLETIN.**

A new Ship Safety Bulletin was published on February 5, 2009.

Title: VALIDITY OF THE FISHING MASTER, SECOND CLASS, THIRD CLASS AND FOURTH CLASS CERTIFICATES OF COMPETENCY ORIGINALLY ISSUED BETWEEN MARCH 21, 1980 AND JUNE 30, 2007

Number: 01/2009

Internet: <http://www.tc.gc.ca/marinesafety/Bulletins/2009/01-eng.htm>

**SECTION 2 – Edition 02/2009
CHART CORRECTIONS**

1220 - Baie des Sept-Îles - New Edition - 09-JAN-2004 - NAD 1983

06-FEB-2009

Affix patch

LNMD. 20-JUN-2008

50°09'42.0"N 066°27'32.0"W

Download Patch - http://www.chs-shc.gc.ca/patches/1220_PA_242757.pdf

DFO(6407827-01)

This notice might affect Electronic Navigational Chart: CA479006

1220 - Pointe Noire - New Edition - 09-JAN-2004 - NAD 1983

06-FEB-2009

Affix patch

LNMD. 20-JUN-2008

50°09'42.0"N 066°27'32.0"W

Download Patch - http://www.chs-shc.gc.ca/patches/1220_PA_248235.pdf

DFO(6407806-01)

This notice might affect Electronic Navigational Chart: CA579007

Add legend Voir/See note ENSABLEMENT/ SILTING

50°09'52.0"N 066°27'50.0"W

DFO(6407836-01)

This notice might affect Electronic Navigational Chart: CA579007

1221 - Pointe de Moisie à/to Île du Grand Caouis - New Edition - 07-JAN-2005 - NAD 1983

13-FEB-2009

Amend vertical clearance of 14 metres, to read 13 metres
(See Chart No. 1, D20)

LNMD. 02-MAY-2008

50°16'14.7"N 066°27'08.8"W

DFO(6407808-01)

This notice might affect Electronic Navigational Chart: CA379028

Amend vertical clearance of 2 metres 6 decimetres, to read 2 metres 4
decimetres
(See Chart No. 1, D20)

50°06'35.9"N 066°41'55.9"W

DFO(6407809-01)

This notice might affect Electronic Navigational Chart: CA379028

Amend vertical clearance of 4 metres 1 decimetre, to read 3 metres 5
decimetres
(See Chart No. 1, D20)

50°16'13.8"N 066°01'30.3"W

DFO(6407810-01)

This notice might affect Electronic Navigational Chart: CA379028

1230 - Rivière-au-Renard - Sheet 1 - New Edition - 10-MAY-2002 - NAD 1983

20-FEB-2009

Add legend Ru against wharf
(See Chart No. 1, F33.1)

LNMD. 25-JAN-2008

48°59'53.7"N 064°23'31.7"W

DFO(6407830-01)

This notice might affect Electronic Navigational Chart: CA579167

1235 - Pointe au Boisvert à/to Cap de la Tête au Chien - New Edition - 31-MAR-2000 - NAD 1983

06-FEB-2009

Add wreck WK with known depth of 33 metres
(See Chart No. 1, K26)

LNMD. 30-DEC-2005

48°00'02.9"N 069°38'35.4"W

DFO(6407824-01)

This notice might affect Electronic Navigational Chart: CA379035

1236 - Matane - New Edition - 23-JUL-2004 - NAD 1983

**SECTION 2 – Edition 02/2009
CHART CORRECTIONS**

06-FEB-2009		LNM/D. 08-AUG-2008
Add	depth of 7 metres 5 decimetres (See Chart No. 1, I10)	48°50'42.4"N 067°34'32.3"W
		<i>DFO(6407825-01)</i>
	This notice might affect Electronic Navigational Chart: CA579040	
Delete	depth of 9 metres 4 decimetres (See Chart No. 1, I10)	48°51'00.1"N 067°34'34.4"W
		<i>DFO(6407825-02)</i>
	This notice might affect Electronic Navigational Chart: CA579040	
Add	depth of 8 metres 4 decimetres (See Chart No. 1, I10)	48°50'59.9"N 067°34'34.1"W
		<i>DFO(6407825-03)</i>
	This notice might affect Electronic Navigational Chart: CA579040	
 1313 - Batiscan au/to Lac Saint-Pierre - New Edition - 02-FEB-2007 - NAD 1983		
06-FEB-2009		LNM/D. 14-NOV-2008
Amend	vertical clearance of *38 metres, to read *37 metres (See Chart No. 1, D20)	46°19'16.5"N 072°33'35.3"W
		<i>DFO(6407819-01)</i>
	This notice might affect Electronic Navigational Chart: CA479014	
 1313 - Port de Trois-Rivières - New Edition - 02-FEB-2007 - NAD 1983		
06-FEB-2009		LNM/D. 14-NOV-2008
Amend	vertical clearance of 9 metres 1 decimetre, to read 5 metres 7 decimetres (See Chart No. 1, D20)	46°21'14.4"N 072°31'29.6"W
		<i>DFO(6407804-01)</i>
	This notice might affect Electronic Navigational Chart: CA579015	
 1314 - Donnacona à/to Batiscan - New Edition - 15-FEB-2008 - NAD 1983		
20-FEB-2009		LNM/D. 16-JAN-2009
Delete	depth of 12 metres 1 decimetre (See Chart No. 1, I10)	46°37'18.6"N 071°56'57.0"W
		<i>DFO(6407822-01)</i>
	This notice might affect Electronic Navigational Chart: CA479017	
Add	depth of 9 metres 7 decimetres (See Chart No. 1, I10)	46°37'17.5"N 071°56'56.0"W
		<i>DFO(6407822-02)</i>
	This notice might affect Electronic Navigational Chart: CA479017	
Delete	depth of 12 metres 2 decimetres (See Chart No. 1, I10)	46°37'11.5"N 071°57'37.9"W
		<i>DFO(6407822-03)</i>
	This notice might affect Electronic Navigational Chart: CA479017	
Add	depth of 11 metres 6 decimetres (See Chart No. 1, I10)	46°37'11.3"N 071°57'40.0"W
		<i>DFO(6407822-04)</i>
	This notice might affect Electronic Navigational Chart: CA479017	
Add	depth of 9 metres 6 decimetres (See Chart No. 1, I10)	46°40'38.5"N 071°51'38.5"W
		<i>DFO(6407823-01)</i>

**SECTION 2 – Edition 02/2009
CHART CORRECTIONS**

This notice might affect Electronic Navigational Chart: CA479017

Add depth of 8 metres 3 decimetres
(See Chart No. 1, I10) 46°40'34.7"N 071°51'55.4"W
DFO(6407823-02)

This notice might affect Electronic Navigational Chart: CA479017

1410 - Lac Saint-Louis - New Edition - 26-APR-2002 - NAD 1983

20-FEB-2009 LNM/D. 21-NOV-2008
Delete rear range/leading light F G 102ft
(See Chart No. 1, P20.2) 45°18'50.6"N 073°57'24.5"W
(Q2008103) LL(32.4) DFO(6407818-01)

This notice might affect Electronic Navigational Chart: CA479045

Add rear range/leading light F G 97ft
(See Chart No. 1, P20.2) 45°18'50.3"N 073°57'25.3"W
(Q2008103) LL(32.4) DFO(6407818-02)

This notice might affect Electronic Navigational Chart: CA479045

1509 - D a E - Sheet 2 - New Edition - 30-DEC-2005 - NAD 1983

20-FEB-2009 LNM/D. 14-NOV-2008
Amend vertical clearance of 10.8 m, to read 9.8 m
(See Chart No. 1, D20) 45°38'15.4"N 073°36'19.8"W
DFO(6407840-01)

Amend vertical clearance of 14.3 m, to read 13.8 m
(See Chart No. 1, D20) 45°38'29.5"N 073°37'26.7"W
DFO(6407841-01)

Amend vertical clearance of 11.9 m, to read 11.4 m
(See Chart No. 1, D20) 45°38'13.0"N 073°37'17.0"W
DFO(6407841-02)

Amend vertical clearance of 11.9 m, to read 11.4 m
(See Chart No. 1, D20) 45°38'03.0"N 073°36'59.1"W
DFO(6407841-03)

Amend vertical clearance of 11.5 m, to read 11 m
(See Chart No. 1, D20) 45°37'57.0"N 073°36'59.6"W
DFO(6407841-04)

1510 - Hudson - Sheet 1 - New Edition - 25-JUL-2003 - NAD 1983

20-FEB-2009 LNM/D. 10-OCT-2008
Add private light FR
(See Chart No. 1, P1) 45°27'45.1"N 074°08'19.3"W
(Q2008094) DFO(6407787-01)

Add pontoon
(See Chart No. 1, F16) between 45°27'45.9"N 074°08'20.8"W

and 45°27'45.1"N 074°08'19.3"W
DFO(6407787-02)

SECTION 2 – Edition 02/2009
CHART CORRECTIONS

1515 - Papineauville à/to Becketts Creek - Sheet 1 - New Chart - 24-JUL-1998 - NAD 1983

27-FEB-2009

LNMD. 23-MAR-2007

Add legend Cable Ferry
(See Chart No. 1, M51)

45°35'23.4"N 075°14'27.5"W

DFO(6407842-01)

4001 - Gulf of Maine to Strait of Belle Isle /au Detroit de Belle Isle - New Edition - 01-DEC-1995 - NAD 1983

06-FEB-2009

LNMD. 09-JAN-2009

Add submarine cable
(See Chart No 1 L30.1)

joining 47°36'54.2"N 057°34'39.1"W

47°32'34.0"N 057°39'30.7"W

47°36'39.4"N 058°06'18.5"W

and 47°35'47.0"N 058°41'16.9"W

DFO(6304170-01)

Add submarine cable
(See Chart No 1 L30.1)

joining 47°26'26.7"N 055°49'09.1"W

47°21'32.2"N 055°59'40.7"W

and 47°36'56.7"N 057°34'36.0"W

DFO(6304170-02)

This notice might affect Electronic Navigational Chart: CA176030

Add submarine cable
(See Chart No 1 L30.1)

joining 47°10'45.6"N 055°32'05.6"W

47°23'34.3"N 055°42'02.6"W

and 47°26'22.9"N 055°48'56.9"W

DFO(6304170-03)

This notice might affect Electronic Navigational Chart: CA176030

Add submarine cable
(See Chart No 1 L30.1)

joining 47°07'26.7"N 055°02'19.9"W

47°16'22.2"N 054°26'22.2"W

47°16'12.6"N 054°10'12.6"W

and 47°20'30.1"N 054°01'20.9"W

DFO(6304170-04)

This notice might affect Electronic Navigational Chart: CA176030

4002 - Golfe du Saint-Laurent / Gulf of St. Lawrence - New Edition - 27-DEC-1991 - NAD 1927

06-FEB-2009

LNMD. 31-OCT-2008

Add submarine cable
(See Chart No 1 L30.1)

joining 47°36'11.9"N 057°34'28.9"W

47°35'23.1"N 057°34'16.8"W

47°32'34.0"N 057°39'30.7"W

47°36'39.4"N 058°06'18.5"W

and 47°35'48.8"N 058°40'08.8"W

DFO(6304171-01)

This notice might affect Electronic Navigational Chart: CA179172

Add submarine cable
(See Chart No 1 L30.1)

joining 47°33'16.6"N 057°20'00.0"W

**SECTION 2 – Edition 02/2009
CHART CORRECTIONS**

47°34'47.3"N 057°30'56.1"W
and 47°36'24.3"N 057°33'41.1"W
DFO(6304171-02)

This notice might affect Electronic Navigational Chart: CA179172

13-FEB-2009

Amend FI 16M to read FI 21M against light
(See Chart No 1 P16)

LNM/D. 06-FEB-2009

45°19'29.6"N 060°55'38.2"W

LL(668) DFO(6304203-01)

This notice might affect Electronic Navigational Chart: CA179172

4003 - Cape Breton to/à Cape Cod - New Edition - 21-MAR-2003 - NAD 1983

13-FEB-2009

Amend FI 16M to read FI 21M against light
(See Chart No 1 P16)

LNM/D. 07-NOV-2008

45°19'29.6"N 060°55'38.2"W

LL(668) DFO(6304203-01)

This notice might affect Electronic Navigational Chart: CA176140

4010 - Bay of Fundy / Baie de Fundy (Inner portion / partie intérieure) - New Edition - 14-FEB-2003 - NAD 1983

20-FEB-2009

Delete depth of 20 fathoms
(See Chart No. 1, I10)

LNM/D. 07-NOV-2008

45°19'33.0"N 064°57'18.0"W

DFO(6304196-01)

This notice might affect Electronic Navigational Chart: CA276241

Add non-dangerous rock with known depth of 6 fathoms, 3 feet
(See Chart No. 1, I10)

45°19'19.2"N 064°57'04.7"W

DFO(6304196-02)

This notice might affect Electronic Navigational Chart: CA276241

Delete submerged dangerous wreck with unknown depth, PA
(See Chart No 1 K28)

45°20'30.0"N 064°58'09.0"W

DFO(6304202-01)

This notice might affect Electronic Navigational Chart: CA276241

Add wreck WK with known depth of 7 fathoms, 5 feet
(See Chart No 1 K26)

45°21'24.1"N 064°56'51.5"W

DFO(6304202-02)

This notice might affect Electronic Navigational Chart: CA276241

Amend FI G to read LFI G against light
(See Chart No 1 P16)

44°48'51.1"N 065°32'18.1"W

(F2008139) LL(199) DFO(6304241-01)

4011 - Approaches to/Approches à Bay of Fundy/Baie de Fundy - Sheet 1 - New Edition - 03-JAN-2003 - NAD 1983

20-FEB-2009

Amend FI G to read LFI G against light
(See Chart No 1 P16)

LNM/D. 07-NOV-2008

44°48'49.0"N 065°32'18.0"W

(F2008139) LL(199) DFO(6304241-01)

This notice might affect Electronic Navigational Chart: CA276206

4012 - Yarmouth to/à Halifax - New Edition - 14-FEB-2003 - NAD 1983

20-FEB-2009

Amend FI G to read LFI G against light
(See Chart No 1 P16)

LNM/D. 07-NOV-2008

44°48'49.0"N 065°32'18.0"W

(F2008139) LL(199) DFO(6304241-01)

**SECTION 2 – Edition 02/2009
CHART CORRECTIONS**

4013 - Halifax to/à Sydney - New Edition - 06-SEP-2002 - NAD 1983

13-FEB-2009

Amend FI 15s 55ft 16M to read FI 15s 55ft 21M against light
(See Chart No 1 P16)

LNMD. 31-OCT-2008

45°19'29.6"N 060°55'38.2"W

LL(668) DFO(6304203-01)

This notice might affect Electronic Navigational Chart: CA276204

4015 - Sydney to/à Saint-Pierre - New Edition - 28-MAR-2003 - NAD 1983

06-FEB-2009

Add submarine cable
(See Chart No 1 L30.1)

LNMD. 31-OCT-2008

joining 47°36'54.2"N 057°34'39.1"W

47°36'13.8"N 057°33'59.7"W

47°35'23.1"N 057°34'16.8"W

47°32'33.2"N 057°40'30.9"W

47°36'39.4"N 058°06'18.5"W

and 47°35'47.0"N 058°41'16.9"W

DFO(6304173-01)

Add submarine cable
(See Chart No 1 L30.1)

joining 47°23'12.0"N 055°53'56.6"W

47°22'41.8"N 055°54'41.2"W

47°21'32.2"N 055°59'40.7"W

47°34'47.3"N 057°30'56.1"W

47°35'49.8"N 057°32'42.7"W

47°36'26.7"N 057°33'04.0"W

and 47°36'56.7"N 057°34'36.0"W

DFO(6304173-02)

4016 - Saint-Pierre to/à St. John's - New Edition - 06-JUN-2003 - NAD 1983

06-FEB-2009

Add submarine cable
(See Chart No 1 L30.1)

LNMD. 09-JAN-2009

joining 47°26'26.7"N 055°49'09.1"W

47°22'41.8"N 055°54'41.2"W

47°21'32.2"N 055°59'40.7"W

and 47°25'24.8"N 056°24'56.4"W

DFO(6304174-01)

Add submarine cable
(See Chart No 1 L30.1)

joining 47°10'45.6"N 055°32'05.6"W

47°23'34.3"N 055°42'02.6"W

47°24'28.1"N 055°44'42.7"W

47°25'01.4"N 055°48'03.0"W

47°25'47.4"N 055°49'09.5"W

and 47°26'22.9"N 055°48'56.9"W

DFO(6304174-02)

Add submarine cable
(See Chart No 1 L30.1)

joining 47°07'26.7"N 055°02'19.9"W

47°08'46.5"N 054°50'28.3"W

47°09'57.2"N 054°46'22.4"W

47°11'42.3"N 054°43'52.3"W

**SECTION 2 – Edition 02/2009
CHART CORRECTIONS**

		47°13'38.1"N 054°39'12.0"W
		47°14'32.0"N 054°35'02.2"W
		47°14'37.9"N 054°30'37.9"W
		47°16'22.2"N 054°26'22.2"W
		47°16'12.6"N 054°10'12.6"W
Add	submarine cable (See Chart No 1 L30.1)	joining 47°17'00.7"N 054°08'00.7"W
		47°19'48.6"N 054°05'48.6"W
		and 47°20'30.1"N 054°01'20.9"W
		<i>DFO(6304174-03)</i>

4020 - Strait of Belle Isle/Détroit de Belle Isle - New Edition - 26-JUL-2002 - NAD 1983

27-FEB-2009		LNM/D. 16-JAN-2009
Delete	light Fl 4s 55ft (See Chart No 1 P1)	51°34'52.5"N 055°25'16.3"W
		<i>(N2008048) LL(238) DFO(6304258-01)</i>
	This notice might affect Electronic Navigational Chart: CA376094	

4124 - Letete Passage, Letang Harbour and/et Blacks Harbour - Sheet 1 - New Edition - 07-APR-2000 - NAD 1983

20-FEB-2009		LNM/D. 07-NOV-2008
Add	light FIR against red starboard hand spar buoy, marked SQ4 (See Chart No 1 Q7)	45°02'57.8"N 066°53'53.2"W
		<i>(F2008170) LL(75.32) DFO(6304246-01)</i>
Reposition	green port hand lighted spar buoy FIG, marked SQ3 (See Chart No 1 Qg)	from 45°02'59.9"N 066°54'00.1"W
		to 45°03'00.0"N 066°53'57.4"W
		<i>(F2008171) LL(70.25) DFO(6304247-01)</i>
Delete	ferry route (See Chart No 1 M50)	joining 45°02'14.4"N 066°54'37.9"W
		45°03'03.8"N 066°53'54.8"W
		and 45°03'04.1"N 066°53'53.5"W
		<i>DFO(6304247-02)</i>
Add	ferry route (See Chart No 1 M50)	joining 45°02'14.4"N 066°54'37.9"W
		45°03'00.0"N 066°53'56.7"W
		and 45°03'04.1"N 066°53'53.5"W
		<i>DFO(6304247-03)</i>

4202 - Halifax Harbour Point Pleasant to/à Bedford Basin - New Edition - 31-DEC-1999 - NAD 1983

20-FEB-2009		LNM/D. 16-MAY-2008
Replace	Designation of berth 5 with 4	44°39'19.0"N 063°34'37.0"W
		<i>DFO(6304212-01)</i>
	This notice might affect Electronic Navigational Chart: CA576003	
Replace	Designation of berth 6 with 5	44°39'17.0"N 063°34'42.0"W
		<i>DFO(6304212-02)</i>
	This notice might affect Electronic Navigational Chart: CA576003	

L/C4227 - Country Harbour to/au Ship Harbour - New Chart - 24-MAY-1991 - NAD 1983

27-FEB-2009		LNM/D. 26-SEP-2008
Amend	Fl G 12s 23m 8M to read LFl G 6s 23m 4M against light (See Chart No 1 P16)	44°44'55.6"N 062°45'24.2"W

**SECTION 2 – Edition 02/2009
CHART CORRECTIONS**

(F2008175) LL(585) DFO(6304263-01)

This notice might affect Electronic Navigational Chart: CA376061

L/C4230 - Little Hope Island to/à Cape St. Marys - New Chart - 15-JUN-1990 - NAD 1983

27-FEB-2009

LNMD. 07-NOV-2008

Amend VQ(6)+LFI 10s to read Q(6)+LFI 15s against yellow and black South cardinal lighted spar buoy, marked KSA
(See Chart No 1 Q130.3)

43°39'00.0"N 065°14'07.8"W

(F2009001) LL(357.8) DFO(6304271-01)

4233 - Cape Canso to/à Country Island - New Chart - 11-JAN-1991 - NAD 1983

13-FEB-2009

LNMD. 09-JAN-2009

Amend FI 15s 17m 16M to read FI 15s 17m 21M against light
(See Chart No 1 P16)

45°19'29.6"N 060°55'38.2"W

LL(668) DFO(6304203-01)

This notice might affect Electronic Navigational Chart: CA376067

4234 - Country Island to/à Barren Island - New Chart - 10-APR-1987 - NAD 1983

13-FEB-2009

LNMD. 28-NOV-2008

Replace green port hand can buoy, marked TT7 with green port hand lighted spar buoy QG, marked TT7
(See Chart No 1 Qg)

45°09'34.0"N 061°39'20.0"W

(G2008088) LL(636.04) DFO(6304204-01)

This notice might affect Electronic Navigational Chart: CA376109

27-FEB-2009

LNMD. 13-FEB-2009

(T)Add private yellow cautionary lighted spar buoy FI Y
(See Chart No 1 Qm)

45°09'19.1"N 061°37'48.0"W

The mooring is temporary and will be removed by October 2009.

DFO(6304249-01)

This notice might affect Electronic Navigational Chart: CA376109

(T)Add

private yellow cautionary lighted spar buoy FI Y
(See Chart No 1 Qm)

45°09'14.1"N 061°37'53.9"W

The mooring is temporary and will be removed by October 2009.

DFO(6304249-02)

This notice might affect Electronic Navigational Chart: CA376109

(T)Add

private yellow cautionary lighted spar buoy FI Y
(See Chart No 1 Qm)

45°09'09.2"N 061°37'59.8"W

The mooring is temporary and will be removed by October 2009.

DFO(6304249-03)

This notice might affect Electronic Navigational Chart: CA376109

4234 - Country Harbour - New Chart - 10-APR-1987 - NAD 1983

13-FEB-2009

LNMD. 28-NOV-2008

Replace green port hand can buoy, marked TT7 with green port hand lighted spar buoy QG, marked TT7
(See Chart No 1 Qg)

45°09'34.0"N 061°39'20.0"W

(G2008088) LL(636.04) DFO(6304204-01)

This notice might affect Electronic Navigational Chart: CA476111

**SECTION 2 – Edition 02/2009
CHART CORRECTIONS**

27-FEB-2009 LNM/D. 13-FEB-2009
(T)Add private yellow cautionary lighted spar buoy FI Y 45°09'09.2"N 061°37'59.8"W
(See Chart No 1 Qm)
The mooring is temporary and will be removed by October 2009.

DFO(6304249-03)

This notice might affect Electronic Navigational Chart: CA476111

4236 - Taylors Head to/à Shut-In Island - New Edition - 13-JUL-2001 - NAD 1983

27-FEB-2009 LNM/D. 20-JUN-2008
Amend FI G 12s 23m 8M to read LFI G 6s 23m 4M against light 44°44'55.6"N 062°45'24.2"W
(See Chart No 1 P16)

(F2008175) LL(585) DFO(6304263-01)

This notice might affect Electronic Navigational Chart: CA376083

4236 - Ship Harbour and Approaches/et les approches - New Edition - 13-JUL-2001 - NAD 1983

27-FEB-2009 LNM/D. 20-JUN-2008
Amend FI G 12s 23m 8M to read LFI G 6s 23m 4M against light 44°44'55.6"N 062°45'24.2"W
(See Chart No 1 P16)

(F2008175) LL(585) DFO(6304263-01)

This notice might affect Electronic Navigational Chart: CA476084

4237 - Approaches to/Approches de Halifax Harbour - New Edition - 02-JUN-2000 - NAD 1983

20-FEB-2009 LNM/D. 07-NOV-2008
Add green port hand lighted can buoy FIG, marked AA55 44°27'48.3"N 063°38'28.2"W
(See Chart No 1 Qg)

(F2008158) LL(501.2) DFO(6304230-01)

This notice might affect Electronic Navigational Chart: CA476009

Add green port hand lighted can buoy FIG, marked AA57 44°28'01.9"N 063°38'15.1"W
(See Chart No 1 Qg)

(F2008157) LL(501.1) DFO(6304231-01)

This notice might affect Electronic Navigational Chart: CA476009

Add green, red and green port bifurcation lighted spar buoy FI (2+1)G 6s, 44°27'09.9"N 063°38'55.9"W
marked AAA
(See Chart No 1 Qj)

(F2008161) LL(501.4) DFO(6304232-01)

This notice might affect Electronic Navigational Chart: CA476009

Add red starboard hand lighted conical buoy FIR, marked AA54 44°27'38.0"N 063°38'30.8"W
(See Chart No 1 Qf)

(F2008163) LL(501.3) DFO(6304234-01)

This notice might affect Electronic Navigational Chart: CA476009

4241 - Lockeport to/à Cape Sable - New Edition - 08-NOV-2002 - NAD 1983

27-FEB-2009 LNM/D. 15-FEB-2008
Reposition red starboard hand lighted pillar buoy FIR, marked JQ52 from 43°28'01.0"N 065°33'49.0"W
(See Chart No 1 Qf)

**SECTION 2 – Edition 02/2009
CHART CORRECTIONS**

to 43°27'57.5"N 065°33'40.3"W
(F2008172) LL(331.44) DFO(6304248-01)

This notice might affect Electronic Navigational Chart: CA376047

Amend VQ(6)+LFI 10s to read Q(6)+LFI 15s against yellow and black South
cardinal lighted spar buoy, marked KSA
(See Chart No 1 Q130.3)

43°39'00.0"N 065°14'07.8"W

(F2009001) LL(357.8) DFO(6304271-01)

This notice might affect Electronic Navigational Chart: CA376047

L/C4242 - Cape Sable Island to/aux Tusket Islands - New Edition - 28-AUG-1992 - NAD 1983

27-FEB-2009

LNM/D. 07-NOV-2008

Reposition red starboard hand lighted pillar buoy FIR, marked JQ52
(See Chart No 1 Qf)

from 43°28'01.0"N 065°33'49.0"W

to 43°27'57.5"N 065°33'40.3"W
(F2008172) LL(331.44) DFO(6304248-01)

4243 - Cape St. Marys - New Edition - 11-OCT-2002 - NAD 1927

27-FEB-2009

LNM/D. 19-OCT-2007

Delete light FIG
(See Chart No 1 P1)

44°05'03.1"N 066°12'20.5"W

(F2008143) LL(243) DFO(6304243-01)

This notice might affect Electronic Navigational Chart: CA576060

Add light FIG
(See Chart No 1 P1)

44°05'03.1"N 066°12'20.7"W

(F2008143) LL(243) DFO(6304243-02)

This notice might affect Electronic Navigational Chart: CA576060

4281 - Canso Harbour and Approaches/et les approches - New Edition - 16-NOV-2001 - NAD 1983

13-FEB-2009

LNM/D. 09-JAN-2009

Amend FI 15s 17m 23M to read FI 15s 17m 21M against light
(See Chart No 1 P16)

45°19'29.6"N 060°55'38.2"W

LL(668) DFO(6304203-01)

This notice might affect Electronic Navigational Chart: CA576527

4307 - Canso Harbour to/au Strait of Canso - New Edition - 04-JAN-2008 - NAD 1983

13-FEB-2009

LNM/D. 14-NOV-2008

Amend FI 15s 55ft 16M to read FI 15s 55ft 21M against light
(See Chart No 1 P16)

45°19'29.6"N 060°55'38.2"W

LL(668) DFO(6304203-01)

This notice might affect Electronic Navigational Chart: CA476277

4321 - Cape Canso to Liscomb Island - New Edition - 08-OCT-2004 - NAD 1983

13-FEB-2009

LNM/D. 26-SEP-2008

Amend FI 15s 17m 23M to read FI 15s 17m 21M against light
(See Chart No 1 P16)

45°19'29.6"N 060°55'38.2"W

LL(668) DFO(6304203-01)

This notice might affect Electronic Navigational Chart: CA376230

4335 - Strait of Canso and Approaches/et les approches - New Edition - 04-JAN-2008 - NAD 1983

13-FEB-2009

LNM/D. 03-OCT-2008

Amend FI 15s 55ft 16M to read FI 15s 55ft 21M against light
(See Chart No 1 P16)

45°19'29.6"N 060°55'38.2"W

LL(668) DFO(6304203-01)

**SECTION 2 – Edition 02/2009
CHART CORRECTIONS**

4385 - Chebucto Head to/à Betty Island - New Edition - 07-JUN-1996 - NAD 1983

20-FEB-2009

LNM/D. 07-NOV-2008

- | | | |
|-----|--|---|
| Add | yellow, black and yellow West cardinal lighted spar buoy Q(9) 15s, marked AAB
(See Chart No 1 Q130.3) | 44°27'32.9"N 063°39'33.7"W

<i>(F2008156) LL(499.9) DFO(6304216-01)</i> |
| Add | green port hand lighted can buoy FIG, marked AA55
(See Chart No 1 Qg) | 44°27'48.3"N 063°38'28.2"W

<i>(F2008158) LL(501.2) DFO(6304230-01)</i> |
| Add | green port hand lighted can buoy FIG, marked AA57
(See Chart No 1 Qg) | 44°28'01.9"N 063°38'15.1"W

<i>(F2008157) LL(501.1) DFO(6304231-01)</i> |
| Add | green, red and green port bifurcation lighted spar buoy FI (2+1)G 6s, marked AAA
(See Chart No 1 Qj) | 44°27'09.9"N 063°38'55.9"W

<i>(F2008161) LL(501.4) DFO(6304232-01)</i> |
| Add | green port hand lighted spar buoy FIG, marked AA53
(See Chart No 1 Qg) | 44°26'48.2"N 063°39'23.6"W

<i>(F2008162) LL(501.5) DFO(6304233-01)</i> |
| Add | red starboard hand lighted conical buoy FIR, marked AA54
(See Chart No 1 Qf) | 44°27'38.0"N 063°38'30.8"W

<i>(F2008163) LL(501.3) DFO(6304234-01)</i> |
| Add | green port hand lighted spar buoy FIG, marked AA51
(See Chart No 1 Qg) | 44°26'32.6"N 063°39'48.0"W

<i>(F2008164) LL(501.6) DFO(6304235-01)</i> |
| Add | red starboard hand lighted spar buoy FIR, marked AA52
(See Chart No 1 Qf) | 44°26'10.3"N 063°39'36.6"W

<i>(F2008165) LL(501.7) DFO(6304236-01)</i> |

L/C4406 - Tryon Shoals to/à Cape Egmont - New Edition - 27-FEB-1998 - NAD 1983

20-FEB-2009

LNM/D. 04-APR-2008

- | | | |
|---------|---|--|
| CANCELS | private yellow cautionary spar buoy, marked SCBL.
(See Chart No 1 Qm)

This buoy is permanently discontinued. Notice 22-Aug-2008(T) DFO (6303912), is cancelled. See reference DFO(6304250) appearing in this edition. | 46°11'40.8"N 063°46'38.0"W

<i>DFO(6303912-01)</i> |
| Delete | private yellow cautionary spar buoy, marked SCBL
(See Chart No 1 Qm) | 46°11'40.8"N 063°46'38.0"W

<i>DFO(6304250-01)</i> |
| Add | depth of 16 metres, 4 decimetres over artificial feature | 46°11'40.8"N 063°46'38.0"W

<i>DFO(6304250-02)</i> |

**SECTION 2 – Edition 02/2009
CHART CORRECTIONS**

Amend Q 12m to read F 12m 17M against front range light
(See Chart No 1 P16) 45°51'42.2"N 063°42'30.8"W
(G2008097) LL(939) DFO(6304254-01)

Amend Iso 4s 19m to read F 17m 17M against rear range light
(See Chart No 1 P16) 45°51'37.2"N 063°42'34.1"W
(G2008098) LL(940) DFO(6304254-02)

4448 - Port Hood - Sheet 1 - New Edition - 13-DEC-2002 - NAD 1983

27-FEB-2009 LNM/D. 19-DEC-2008
Delete light FIG 46°01'34.0"N 061°32'39.7"W
(See Chart No 1 P1) *(G2008095) LL(876.8) DFO(6304252-01)*

Add light FIG 46°01'33.3"N 061°32'39.7"W
(See Chart No 1 P1) *(G2008095) LL(876.8) DFO(6304252-02)*

Add light FIR 46°01'35.7"N 061°32'38.0"W
(See Chart No 1 P1) *(G2008096) LL(876.9) DFO(6304253-01)*

Add light FIG 46°01'01.7"N 061°32'25.2"W
(See Chart No 1 P1) *(G2008099) LL(878.1) DFO(6304256-01)*

4462 - St. George's Bay - New Edition - 07-MAR-2003 - NAD 1983

27-FEB-2009 LNM/D. 10-AUG-2007
Add light FIR 46°01'35.7"N 061°32'38.0"W
(See Chart No 1 P1) *(G2008096) LL(876.9) DFO(6304253-01)*

Add light FIG 46°01'02.0"N 061°32'28.0"W
(See Chart No 1 P1) *(G2008099) LL(878.1) DFO(6304256-01)*

4468 - Île du Petit Mécatina aux/to Îles Sainte-Marie - New Edition - 12-JUL-1985 - NAD 1927

20-FEB-2009 LNM/D. 07-NOV-2008
Amend vertical clearance of 44 feet, to read 41 feet
(See Chart No. 1, D20) 50°32'19.2"N 059°28'58.4"W
DFO(6407820-01)

4470 - Blanc-Sablon à/to Middle Bay - New Edition - 04-JAN-1980 - NAD 1927

20-FEB-2009 LNM/D. 07-NOV-2008
Delete private yellow cautionary can buoy, marked EVPM-16
(See Chart No. 1, Qm) 51°28'59.8"N 057°14'46.4"W
(Q2008104) DFO(6407828-01)

4485 - Cap des Rosiers à/to Chandler - New Edition - 26-SEP-1997 - NAD 1983

20-FEB-2009 LNM/D. 02-JAN-2009
Delete light FR 48°50'20.4"N 064°12'43.3"W
(See Chart No. 1, P1) *(Q2009001) LL(1620) DFO(6407837-01)*

This notice might affect Electronic Navigational Chart: CA379086

**SECTION 2 – Edition 02/2009
CHART CORRECTIONS**

Add light Iso R
(See Chart No. 1, P1) 48°50'18.8"N 064°12'46.3"W

DFO(6407837-02)

This notice might affect Electronic Navigational Chart: CA379086

4498 - Pugwash Harbour and approaches/et les approches - New Edition - 20-JUN-2003 - NAD 1983

20-FEB-2009 LNM/D. 15-DEC-2006

Amend Q 41ft to read F 39ft against front range light 45°51'42.2"N 063°42'30.8"W
(See Chart No 1 P16)

(G2008097) LL(939) DFO(6304254-01)

Amend Iso 4s 61ft to read F 54ft against rear range light 45°51'37.2"N 063°42'34.1"W
(See Chart No 1 P16)

(G2008098) LL(940) DFO(6304254-02)

4512 - Quirpon Harbour and Approaches/et les approches - New Edition - 24-JAN-2003 - NAD 1983

27-FEB-2009 LNM/D. 19-SEP-2008

Delete light Fl 4s 55ft 51°34'52.5"N 055°25'16.3"W
(See Chart No 1 P1)

(N2008048) LL(238) DFO(6304258-01)

4622 - Cape St. Mary's to/à Argentinia Harbour and/et Jude Island - New Edition - 03-OCT-2003 - NAD 1983

20-FEB-2009 LNM/D. 23-JAN-2009

CANCELS subsurface mooring at a depth of 1 metre 5 decimetres (5 feet) 47°02'21.7"N 054°09'31.5"W

The mooring has been removed. Notice 02-NOV-2007(T), DFO (6303670-02) is cancelled.

DFO(6303670-02)

CANCELS subsurface mooring at a depth of 1 metre 5 decimetres (5 feet) 47°22'54.7"N 054°15'49.9"W

The mooring has been removed. Notice 02-NOV-2007(T), DFO (6303670-05) is cancelled.

DFO(6303670-05)

This notice might affect Electronic Navigational Chart: CA376173

L/C4624 - Long Island to/à St. Lawrence Harbours - New Edition - 07-JAN-2000 - NAD 1983

20-FEB-2009 LNM/D. 30-JAN-2009

CANCELS subsurface mooring at a depth of 1 metre 5 decimetres (5 feet) 47°02'11.0"N 054°59'07.0"W

The mooring has been removed. Notice 02-NOV-2007(T), DFO (6303670-03) is cancelled.

DFO(6303670-03)

CANCELS subsurface mooring at a depth of 1 metre 5 decimetres (5 feet) 47°15'18.4"N 055°22'14.3"W

The mooring has been removed. Notice 02-NOV-2007(T), DFO (6303670-04) is cancelled.

DFO(6303670-04)

4625 - Burin Peninsula to/à Saint-Pierre - New Edition - 24-JAN-2003 - NAD 1983

20-FEB-2009 LNM/D. 30-JAN-2009

CANCELS subsurface mooring at a depth of 1 metre 5 decimetres (5 feet) 46°55'53.2"N 055°59'52.4"W

The mooring has been removed. Notice 02-NOV-2007(T), DFO (6303670-01) is cancelled.

**SECTION 2 – Edition 02/2009
CHART CORRECTIONS**

		<i>DFO(6303670-01)</i>
	This notice might affect Electronic Navigational Chart: CA376164	
Add	light FI(2) RWG (See Chart No 1 P1)	47°06'02.9"N 055°45'03.0"W (N2008044) LL(106.5) <i>DFO(6304159-01)</i>
	This notice might affect Electronic Navigational Chart: CA376164	
Delete	light FIR (See Chart No 1 P1)	47°06'07.8"N 055°44'51.8"W <i>DFO(6304213-01)</i>
	This notice might affect Electronic Navigational Chart: CA376164	
Add	breakwater (See Chart No 1 F4.1)	joining 47°06'06.3"N 055°44'59.3"W 47°06'07.2"N 055°44'53.2"W and 47°06'05.8"N 055°44'52.6"W <i>DFO(6304213-02)</i>
	This notice might affect Electronic Navigational Chart: CA376164	
Add	light FIR (See Chart No 1 P1)	47°06'05.8"N 055°44'52.6"W <i>LL(108) DFO(6304213-03)</i>
	This notice might affect Electronic Navigational Chart: CA376164	
Delete	light FIR (See Chart No 1 P1)	47°06'05.0"N 055°44'55.2"W <i>DFO(6304214-01)</i>
	This notice might affect Electronic Navigational Chart: CA376164	
Add	light QR (See Chart No 1 P1)	47°06'04.3"N 055°44'58.6"W <i>LL(107) DFO(6304214-02)</i>
	This notice might affect Electronic Navigational Chart: CA376164	
Delete	light FI (See Chart No 1 P1)	47°06'03.8"N 055°44'55.6"W <i>DFO(6304215-01)</i>
	This notice might affect Electronic Navigational Chart: CA376164	
Delete	breakwater (See Chart No 1 F4.1)	between 47°06'02.0"N 055°44'55.2"W and 47°06'05.0"N 055°44'55.6"W <i>DFO(6304215-02)</i>
	This notice might affect Electronic Navigational Chart: CA376164	
Add	wharf (See Chart No 1 F14)	between 47°06'02.9"N 055°44'57.5"W and 47°06'01.2"N 055°44'57.5"W <i>DFO(6304215-03)</i>
	This notice might affect Electronic Navigational Chart: CA376164	
Add	light QG (See Chart No 1 P1)	47°06'02.9"N 055°44'57.5"W <i>DFO(6304215-04)</i>

**SECTION 2 – Edition 02/2009
CHART CORRECTIONS**

This notice might affect Electronic Navigational Chart: CA376164

4626 - Saint-Pierre and/et Miquelon (France) - New Edition - 24-JAN-2003 - NAD 1983

20-FEB-2009 LNM/D. 10-DEC-2004
CANCELS subsurface mooring at a depth of 1 metre 5 decimetres (5 feet) 46°55'53.2"N 055°59'52.4"W

The mooring has been removed. Notice 02-NOV-2007(T), DFO (6303670-01) is cancelled.

DFO(6303670-01)

4644 - Bay D'Espoir and/et Hermitage Bay - Sheet 1 - New Edition - 25-JUN-1999 - NAD 1983

20-FEB-2009 LNM/D. 01-AUG-2008
Add light FIR 47°51'44.2"N 055°46'20.2"W
(See Chart No 1 P1)

(N2008047) LL(132.51) DFO(6304240-01)

4669 - Red Bay - New Edition - 06-DEC-2002 - NAD 1983

27-FEB-2009
Delete light FR 51°43'56.5"N 056°25'50.8"W
(See Chart No 1 P1)

(N2009001) LL(230.3) DFO(6304269-01)

4731 - Forteau Bay to/à Domino Run - New Edition - 13-JUN-2003 - Unknown

27-FEB-2009 LNM/D. 26-OCT-2007
Delete light Fl 4s 55ft 51°34'52.5"N 055°25'16.3"W
(See Chart No 1 P1)

(N2008048) LL(238) DFO(6304258-01)

4830 - Great Bay de l'Eau and Approaches/et les Approches - New Edition - 08-NOV-2002 - NAD 1983

06-FEB-2009 LNM/D. 28-MAR-2008
Add submarine cable joining 47°28'52.1"N 055°47'54.2"W
(See Chart No 1 L30.1)

47°29'15.2"N 055°47'23.0"W
47°29'15.1"N 055°47'10.1"W
47°29'07.6"N 055°46'56.5"W
47°28'59.7"N 055°46'52.6"W
47°27'45.4"N 055°47'12.6"W
and 47°24'08.8"N 055°52'32.7"W
DFO(6304193-01)

Add submarine cable joining 47°21'00.1"N 055°39'56.3"W
(See Chart No 1 L30.1)

47°23'34.3"N 055°42'02.6"W
47°23'53.3"N 055°42'37.0"W
47°24'28.1"N 055°44'42.7"W
47°25'01.4"N 055°48'03.0"W
47°25'47.4"N 055°49'09.5"W
47°26'04.4"N 055°49'09.6"W
47°26'35.1"N 055°48'48.4"W
47°27'42.7"N 055°47'06.0"W
47°28'59.0"N 055°46'49.5"W
47°29'09.3"N 055°46'53.6"W
47°29'18.6"N 055°47'09.1"W
47°29'16.9"N 055°47'24.5"W

**SECTION 2 – Edition 02/2009
CHART CORRECTIONS**

and 47°28'52.2"N 055°47'54.2"W
DFO(6304193-03)

4830 - Harbour Breton - New Edition - 08-NOV-2002 - NAD 1927

06-FEB-2009

LNM/D. 28-MAR-2008

Add submarine cable
(See Chart No 1 L30.1)

between 47°28'52.1"N 055°47'54.2"W

and 47°29'12.2"N 055°47'27.0"W
DFO(6304193-02)

Add submarine cable
(See Chart No 1 L30.1)

between 47°29'14.9"N 055°47'27.0"W

and 47°28'52.2"N 055°47'54.2"W
DFO(6304193-04)

L/C4832 - Fortune Bay - Southern Portion/Partie sud - New Chart - 02-OCT-1987 - NAD 1983

20-FEB-2009

LNM/D. 30-JAN-2009

CANCELS subsurface mooring at a depth of 1 metre 5 decimetres (5 feet)

47°15'18.4"N 055°22'14.3"W

The mooring has been removed. Notice 02-NOV-2007(T), DFO (6303670-04) is cancelled.

DFO(6303670-04)

L/C4841 - CAPE ST. MARY'S TO/À ARGENTIA - New Chart - 19-MAY-1989 - NAD 1983

20-FEB-2009

LNM/D. 06-FEB-2009

CANCELS subsurface mooring at a depth of 1 metre 5 decimetres (5 feet)

47°02'21.7"N 054°09'31.5"W

The mooring has been removed. Notice 02-NOV-2007(T), DFO (6303670-02) is cancelled.

DFO(6303670-02)

06-FEB-2009

LNM/D. 09-JAN-2009

Add submarine cable
(See Chart No 1 L30.1)

joining 47°16'17.6"N 054°20'26.7"W

47°16'12.6"N 054°10'12.6"W

47°16'24.4"N 054°09'24.4"W

47°16'46.0"N 054°08'46.0"W

47°16'52.7"N 054°08'10.4"W

47°17'00.7"N 054°08'00.7"W

47°19'48.6"N 054°05'48.6"W

47°20'01.2"N 054°04'01.2"W

47°20'28.3"N 054°01'28.3"W

47°20'40.7"N 054°00'40.7"W

47°20'31.3"N 053°59'31.3"W

47°19'59.7"N 053°57'59.7"W

47°19'44.5"N 053°57'44.5"W

47°18'49.5"N 053°57'49.5"W

and 47°18'36.6"N 053°58'06.4"W

DFO(6304195-01)

L/C4841 - ARGENTIA - New Chart - 19-MAY-1989 - NAD 1983

06-FEB-2009

LNM/D. 09-JAN-2009

Add submarine cable
(See Chart No 1 L30.1)

joining 47°20'36.5"N 054°00'56.7"W

47°20'40.7"N 054°00'40.7"W

47°20'31.3"N 053°59'31.3"W

**SECTION 2 – Edition 02/2009
CHART CORRECTIONS**

		47°19'59.7"N 053°57'59.7"W
		47°19'44.5"N 053°57'44.5"W
		47°18'49.5"N 053°57'49.5"W
Add	submarine cable (See Chart No 1 L30.1)	joining 47°17'57.7"N 053°58'57.7"W
		47°17'43.8"N 053°58'43.8"W
		47°17'23.6"N 053°59'23.6"W
		and 47°17'15.2"N 053°59'15.2"W
		<i>DFO(6304195-02)</i>
4905 - Cape Tormentine à/to West Point - New Edition - 29-DEC-2000 - NAD 1983		
20-FEB-2009		LNMD. 04-APR-2008
CANCELS	private yellow cautionary spar buoy, marked SCBL. (See Chart No 1 Qm)	46°11'40.8"N 063°46'38.0"W
	This buoy is permanently discontinued. Notice 22-Aug-2008(T) DFO (6303912), is cancelled. See reference DFO(6304250) appearing in this edition.	
		<i>DFO(6303912-01)</i>
Delete	private yellow cautionary spar buoy, marked SCBL (See Chart No 1 Qm)	46°11'40.8"N 063°46'38.0"W
		<i>DFO(6304250-01)</i>
Add	depth of 16 metres, 4 decimetres over artificial feature	46°11'40.8"N 063°46'38.0"W
		<i>DFO(6304250-02)</i>
4956 - Cap-aux-Meules - New Edition - 21-FEB-2003 - NAD 1983		
06-FEB-2009		LNMD. 01-AUG-2008
Delete	depth of 5 metres 5 decimetres (See Chart No. 1, I10)	47°22'23.4"N 061°51'02.0"W
	This notice might affect Electronic Navigational Chart: CA579046	<i>DFO(6407832-01)</i>
Delete	depth of 5 metres (See Chart No. 1, I10)	47°22'26.1"N 061°51'03.8"W
	This notice might affect Electronic Navigational Chart: CA579046	<i>DFO(6407832-02)</i>
Delete	depth of 5 metres 4 decimetres (See Chart No. 1, I10)	47°22'29.1"N 061°51'06.1"W
	This notice might affect Electronic Navigational Chart: CA579046	<i>DFO(6407832-03)</i>
Add	depth of 5 metres 8 decimetres (See Chart No. 1, I10)	47°22'22.6"N 061°51'00.0"W
	This notice might affect Electronic Navigational Chart: CA579046	<i>DFO(6407832-04)</i>
Add	depth of 6 metres 4 decimetres (See Chart No. 1, I10)	47°22'23.4"N 061°51'04.5"W
	This notice might affect Electronic Navigational Chart: CA579046	<i>DFO(6407832-05)</i>
Add	depth of 5 metres 3 decimetres (See Chart No. 1, I10)	47°22'26.5"N 061°51'02.8"W
	This notice might affect Electronic Navigational Chart: CA579046	<i>DFO(6407832-06)</i>

**SECTION 2 – Edition 02/2009
CHART CORRECTIONS**

Add depth of 6 metres 4 decimetres
(See Chart No. 1, I10) 47°22'26.6"N 061°51'05.6"W

DFO(6407832-07)

This notice might affect Electronic Navigational Chart: CA579046

Add depth of 5 metres 4 decimetres
(See Chart No. 1, I10) 47°22'29.0"N 061°51'04.9"W

DFO(6407832-08)

This notice might affect Electronic Navigational Chart: CA579046

Add depth of 6 metres 7 decimetres
(See Chart No. 1, I10) 47°22'29.4"N 061°51'08.2"W

DFO(6407832-09)

This notice might affect Electronic Navigational Chart: CA579046

Add depth of 6 metres 5 decimetres
(See Chart No. 1, I10) 47°22'31.2"N 061°51'08.7"W

DFO(6407832-10)

This notice might affect Electronic Navigational Chart: CA579046

6100 - Métabetchouan - Sheet 1 - New Edition - 30-MAR-2001 - NAD 1983

20-FEB-2009

LNM/D. 22-SEP-2006

Amend vertical clearance of 8 metres 5 decimetres, to read 7 metres 5
decimetres
(See Chart No. 1, D20)

48°25'52.1"N 071°52'33.8"W

DFO(6407805-01)

6100 - La Grands Décharge et les Approches/and Approches - Sheet 4 - New Edition - 30-MAR-2001 - NAD 1983

20-FEB-2009

LNM/D. 22-SEP-2006

Amend vertical clearance of 7 metres 8 decimetres, to read 6 metres 3
decimetres
(See Chart No. 1, D20)

48°31'45.4"N 071°47'11.5"W

DFO(6407811-01)

6100 - Entrée/Entrance La Grande Décharge - Sheet 4 - New Edition - 30-MAR-2001 - NAD 1983

20-FEB-2009

LNM/D. 22-SEP-2006

Amend vertical clearance of 21 metres, to read 19 metres
(See Chart No. 1, D20)

48°36'16.1"N 071°47'02.8"W

DFO(6407821-01)

Amend vertical clearance of 20 metres, to read 18 metres
(See Chart No. 1, D20)

48°36'07.5"N 071°46'50.9"W

DFO(6407821-02)

8048 - Cape Harrison to/à St. Michael Bay - New Edition - 20-JUN-2003 - NAD 1983

20-FEB-2009

LNM/D. 21-MAR-2008

CANCELS subsurface mooring at a depth of 994 metres below the surface

55°07'12.0"N 054°05'18.0"W

The mooring has been removed. Notice 06-JUL-2007(T), DFO
(6303540-01) is cancelled.

DFO(6303540-01)

This notice might affect Electronic Navigational Chart: CA276113

**SECTION 2 – Edition 02/2009
CHART CORRECTIONS**

8049 - St. Michael Bay to/aux Gray Islands - New Edition - 07-MAR-2003 - Unknown

27-FEB-2009

Delete

light Fl
(See Chart No 1 P1)

LNM/D. 16-JAN-2009

51°35'00.0"N 055°25'30.0"W

(N2008048) LL(238) DFO(6304258-01)

SECTION 4 – Edition 02/2009
SAILING DIRECTIONS AND SMALL CRAFT GUIDE CORRECTIONS

Arctic Canada, Volume II, Fourth Edition, 1985 —

Chapter VII — Delete paragraphs 66 and 67

Replace by: 66 **Nanisivik** (*73°04'N, 84°33'W*) is an abandoned settlement in Strathcona Sound that was developed to support a mine that produced zinc and lead concentrate. The mine closed in 2002. There is an airstrip and a wharf near the former mine site.

(C2009-002.01)

Chapter VII — Paragraph 68, lines 5 to 9

Delete: “Ships are loaded” to end of paragraph.

(C2009-002.02)

Chapter VII — Delete paragraph 71

Replace by: 71 The 6,400-foot (1,952-m) gravel airstrip, on high ground 6 miles south of Nanisivik, now serves only the community of Arctic Bay. *First Air* provides daily scheduled service to either Resolute or Iqaluit.

(C2009-002.03)

Correction promulgated in Monthly Edition No. 11/2007

Chapter VIII — Paragraph 138, last line

Add: Prince Leopold Island and a 5 kilometre wide sea area around it have been designated as a Migratory Bird Sanctuary. Except in cases of emergency, a permit from the Canadian Wildlife Service of Environment Canada is required to enter this sanctuary. (*See Sailing Directions booklet ARC 400, General Information, Northern Canada, Chapter 1, for more information.*)

(C2007-043.01)

SHOULD HAVE READ

Chapter VII — Paragraph 138, last line

Add: Prince Leopold Island and a 5 kilometre wide sea area around it have been designated as a Migratory Bird Sanctuary. Except in cases of emergency, a permit from the Canadian Wildlife Service of Environment Canada is required to enter this sanctuary. (*See Sailing Directions booklet ARC 400, General Information, Northern Canada, Chapter 1, for more information.*)

(C2007-043.01)

ATL 101 — Newfoundland — Northeast and East Coasts, First Edition, 1997 —

Chapter 1 — Paragraph 22, last line (Re: Correction promulgated in Monthly Edition No. 5/2006)

Delete: 0.15 mile NNE

Replace by: 150 m (492 ft) NE

(N2009-00.6)

ATL 103 — Newfoundland — Southwest Coasts, First Edition, 1995 —

Chapter 1 — Paragraph 103, lines 6 to 9

Delete: “Near the west ... points 259°.”

(N2009-00.2)

Chapter 1 — Paragraph 162, last line

Add: South cardinal light **buoy** VL (*114.9*) is moored 1.6 miles west of the light on Long Harbour Point.

(N2009-00.3)

Chapter 1 — Paragraph 199, line 2

Delete: adjacent to Jensen’s wharf

Replace by: at the SW end of the previously described Public wharf

(N2009-00.5)

SECTION 4 – Edition 02/2009
SAILING DIRECTIONS AND SMALL CRAFT GUIDE CORRECTIONS

ATL 109 — Gulf of St. Lawrence (Northeast Portion), First Edition, 2006 —

Chapter 2 — Paragraph 17, lines 6 to 8
Delete: “A private ... this wharf.”

(Q2008-060.1)

ATL 111 —St. Lawrence River — Île Verte to Québec and Fjord du Saguenay, Third Edition, 2007 —

Chapter 2 — In the vicinity of paragraph 17, **Table 2.2 Air Obstructions**
Make the following correction in the “**Vertical Clearance (shown on the Charts)**” column.

Location	Vertical Clearance (shown on the Charts) Bridge / Bare Line
-----------------	---

Fjord du Saguenay Cap Sainte-Marguerite	49 m
---	------

(Q2008-048.1)

Chapter 2 — Paragraph 84, lines 2 to 4
Delete: “The **speed** ... Louise.”

(Q2009-005.1)

Chapter 4 — Paragraph 44, line 2
Delete: 50 m
Replace by: 49 m

(Q2008-048.2)

ATL 112 —St. Lawrence River — Cap-Rouge to Montréal and Rivière Richelieu, Second Edition, 2001 —

Chapter 1 — In the vicinity of paragraph 29
Replace the **NEUVILLE** Diagram with the new one provided in Section IV of this Monthly Edition.

(Q2008-049.1)

Chapter 2 — Paragraph 162, line 2
Delete: 53.9 m
Replace by: 53 m

(Q2009-002.1)

CEN 304 — Detroit River, Lake St. Clair, St. Clair River, First Edition, 1996 —

Chapter 3 — Delete paragraph 180

Replace by: ¹⁸⁰ **Towage.** — *There is a tug (2,200 hp) available at Port Huron and service can be arranged for through Malcolm Marine (810-329-9013), 24 hours a day. The tug works on all lakes and is a very capable icebreaker. Rescue towing is also available for any size vessel on Lake Huron or St. Clair River. Work boats ranging from 300 to 2,200 hp are also available. Tugs for Port Huron are also available from Detroit. (See Towage under Detroit.)*

(C2009-001.01)

CEN 305 —Lake Huron, St. Marys River, Lake Superior, First Edition, 2000 —

Chapter 1 — Paragraph 91, lines 2 and 3
Delete: “There is a” to end of sentence.

(C2008-011.01)

SECTION 4 – Edition 02/2009
SAILING DIRECTIONS AND SMALL CRAFT GUIDE CORRECTIONS

CEN 307 — North Channel of Lake Huron, First Edition, 2000 —

Chapter 5 — Paragraph 289, line 3

Delete: Lake of the Mountains

Replace by: **Lake Duborne**

(C2008-012.01)

INDEX — After “Drummond Island, MI, 61”

Insert: Duborne, Lake, 53

(C2008-012.02)

INDEX — After “Lair Hill, 69”

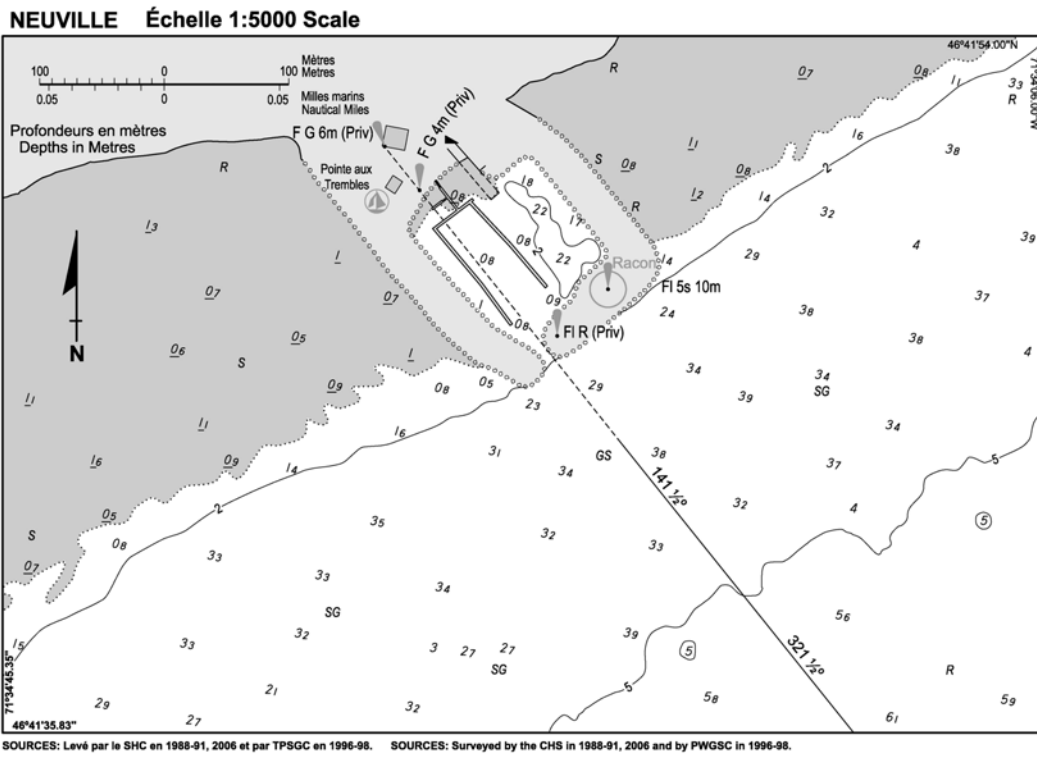
Insert: Lake Duborne, 53

(C2008-012.03)

INDEX — Delete “Lake of the Mountains, 53”

(C2008-012.04)

SECTION 4 – Edition 02/2009
SAILING DIRECTIONS AND SMALL CRAFT GUIDE CORRECTIONS



SECTION 5 – Edition 02/2009
LIST OF LIGHTS, BUOYS AND FOG SIGNALS CORRECTIONS

No.	Name	Position ----- Latitude N. Longitude W.	Light Characteristics	Focal Height in m. above water	Nomi- nal Range	Description ----- Height in meters above ground	Remarks ----- Fog Signals
-----	------	--	--------------------------	--	-----------------------	--	---------------------------------

NEWFOUNDLAND

132.51	Conne River Wharf	47 51 44.2 55 46 20.2	FI R	4s	3.2	2	Cylindrical mast.	Year round.	Chart:4644 Edn 02/09(N08-047)
230.3	Red Bay Wharf							Delete from list.	Chart:4669 Edn 02/09(N09-001)
238	Partridge Point (Quirpon)							Delete from list.	Chart:4512 Edn 02/09(N08-048)

ATLANTIC

70.25	Letete Inner light buoy SQ3	45 03 00 66 53 57.4	FI G	4s	Green spar, marked "SQ3".	Year round.	Chart:4124 Edn 02/09 (F08-171)
75.32	Little Letete Passage light buoy SQ4	45 02 57.8 66 53 53.2	FI R	4s	Red spar, marked "SQ4".	Year round.	Chart:4124 Edn 02/09 (F08-170)
199 H3916	Parkers Cove	On end of E. breakwater. 44 48 51.1 65 32 18.1	LFI G	12s	8.0	2	Cylindrical mast. 8.0	Flash 2 s; eclipse 10 s. Operates at night only. Year round.	Chart:4010 Edn 02/09 (F08-139)
243 H3846	Cape St. Marys Breakwater	On rubble breakwater. 44 05 03.1 66 12 20.7	FI G	4s	6.9	4	Cylindrical mast. 6.9	Operates at night only. Year round.	Chart:4118 Edn 02/09 (F08-142, 143)
293.2	Snipe Reef	43 40 27.5 65 59 08.3	FI R	4s	4.1	4	Red cylindrical mast. 4.1	Operates at night only. Year round.	Chart:4244 Edn 02/09 (F08-144, 145)
331.44	Stoney Island light buoy JQ52	43 27 57.5 65 33 40.3	FI R	4s	Red, marked "JQ52".	Year round.	Chart:4241 Edn 02/09 (F08-172)
357.8	Strap Tub South Cardinal light buoy KSA	43 39 00 65 14 07.8	Q(6) +LFI	W	15s	Yellow and black spar, marked "KSA".	Year round.	Chart:4241 Edn 02/09 (F09-001)
416.515	Medway Harbour (West Berlin) light buoy UJ55	44 04 02 64 35 06.2	FI G	4s	Green, marked "UJ55".	Year round.	Chart:4211 Edn 02/09 (F08-169)

SECTION 5 – Edition 02/2009
LIST OF LIGHTS, BUOYS AND FOG SIGNALS CORRECTIONS

No.	Name	Position ----- Latitude N. Longitude W.	Light Characteristics	Focal Height in m. above water	Nomi- nal Range	Description ----- Height in meters above ground	Remarks ----- Fog Signals
ATLANTIC							
499.9	Stapleton Rock West Cardinal light buoy AAB	43 27 32.9 63 39 33.7	Q(9) W	15s	Yellow, black and yellow, marked "AAB". Year round. Chart:4385 Edn 02/09 (F08-156)
501.1	Fawson Rock light buoy AA57	44 28 01.9 63 38 15.1	Fl G	4s	Green, marked "AA57". Year round. Chart:4385 Edn 02/09 (F08-157)
501.2	Pennant Harbour light buoy AA55	44 27 48.3 63 38 28.2	Fl G	4s	Green, marked "AA55". Year round. Chart:4385 Edn 02/09 (F08-158)
501.3	Pennant Harbour light buoy AA54	44 27 38 63 38 30.8	Fl R	4s	Red, marked "AA54". Year round. Chart:4385 Edn 02/09 (F08-163)
501.4	Pennant Harbour bifurcation light buoy AAA	44 27 09.9 63 38 55.9	Fl (2+1) G	6s	Green, red and green spar, marked "AAA". Year round. Chart:4385 Edn 02/09 (F08-161)
501.5	Pennant Harbour light buoy AA53	44 26 48.2 63 39 23.6	Fl G	4s	Green spar, marked "AA53". Year round. Chart:4385 Edn 02/09 (F08-162)
501.6	Pennant Harbour light buoy AA51	44 26 32.6 63 39 48	Fl G	4s	Green spar, marked "AA51". Year round. Chart:4385 Edn 02/09 (F08-164)
501.7	Pennant Harbour light buoy AA52	44 26 10.3 63 39 36.6	Fl R	4s	Red spar, marked "AA52". Year round. Chart:4385 Edn 02/09 (F08-165)
585 H3564	Ship Harbour	On Wolfes Point. 44 44 55.6 62 45 24.2	LFl G	6s	22.9	4	Triangular skeleton mast, red and white rectangular daymark on two sides. 6.1 Flash 2 s; eclipse 4 s. Operates at night only. Seasonal. Chart:4236 Edn 02/09 (F08-175)
636.04	Isaac's Harbour light buoy TT7	45 09 34 61 39 20	Q G	1s	Green spar, marked "TT7". Seasonal. Chart:4234 Edn 02/09 (G08-088)
668 H3458	Cranberry Islands Racon -... (B) X Band	S. part of island, off Cape Canso. 45 19 29.6 60 55 38.2	Fl W	15s	16.9	21	White square tower, red upper portion. 14.6 Flash 1 s; eclipse 14 s. Emergency light. Operates at night only. Year round. Horns(2) - Blast 3 s; sil. 3 s; blast 3 s; sil. 51 s. Horns point 066° and 141°. Horns sound in unison. Chart:4281 Edn 02/09
876.8	Murphy Pond	Outer end of W. breakwater. 46 01 33.3 61 32 39.7	Fl G	4s	6.2	2	Cylindrical tower. 3.3 Operates at night only. Seasonal. Chart:4448 Edn 02/09 (G08-095)

SECTION 5 – Edition 02/2009
LIST OF LIGHTS, BUOYS AND FOG SIGNALS CORRECTIONS

No.	Name	Position ----- Latitude N. Longitude W.	Light Characteristics	Focal Height in m. above water	Nomi- nal Range	Description ----- Height in meters above ground	Remarks ----- Fog Signals
ATLANTIC							
876.9	Murphy Pond Breakwater	Outer end of E. breakwater. 46 01 35.7 61 32 38	Fl R	4s	5.6	2	Cylindrical mast. 3.3 Operates at night only. Seasonal. Chart:4448 Edn. 02/09 (G08-096)
878.1	Port Hood Wharf	Southern most corner. 46 01 01.7 61 32 25.2	Fl G	4s	4.8	2	Cylindrical mast. 3.5 Operates at night only. Seasonal. Chart:4448 Edn. 02/09 (G08-099)
939 H1291	Bergeman Point range	On point. 45 51 42.2 63 42 30.8	F W	11.8	17	Square skeleton tower, white daymark, red vertical stripe. 5.0 Visible in line of range. Seasonal.
940 H1291.1		205°12' 168.6m from front.	F W	16.6	17	Square skeleton tower, white daymark, red vertical stripe. 9.6 Visible in line of range. Seasonal. Chart:4498 Edn 02/09 (G08-097, 098)
1172.2	<i>The Lump light buoy M5/5</i>	47 06 28.7 64 58 06.4	Fl G	4s	<i>Green spar, marked "M5/5".</i> <i>Winter spar. Year round.</i> Chart:4911 Edn 02/09 (G08-090)
1172.5	<i>The Lump light buoy M6</i>	47 06 30.9 64 58 13.4	Fl R	4s	<i>Red spar, marked "M6".</i> <i>Winter spar. Year round.</i> Chart:4911 Edn 02/09 (G08-091)
1172.53	<i>The Lump light buoy M9</i>	47 06 36.3 64 58 26.1	Fl G	4s	<i>Green spar, marked "M9".</i> <i>Winter spar. Year round.</i> Chart:4911 Edn 02/09 (G08-092)
1173.3	<i>Ship Channel light buoy M13</i>	47 07 46 64 59 23.3	Q G	1s	<i>Green spar, marked "M13".</i> <i>Winter spar. Year round.</i> Chart:4911 Edn 02/09 (G08-093)
1173.8	<i>Split Shoal light buoy M15</i>	47 08 28.7 65 00 18.2	Q G	1s	<i>Green spar, marked "M15".</i> <i>Winter spar. Year round.</i> Chart:4911 Edn 02/09 (G08-094)
1620 H1770	Cap-des-Rosiers- Est Wharf	On outer end of N. jetty. 48 50 18.8 64 12 46.3	Iso R	2s	7.6	4	Pipe swing pole. 6.3 Operates at night only. Seasonal. Chart:4485 Edn 02/09 (Q09-001)
1756.4 H2096	Île aux Basques	E. end of island. 48 08 57.1 69 14 18.4	Fl Y	6s	13.1	7	Square skeleton tower. 9.4 Flash 1 s; eclipse 5 s. Radar reflector. Operates at night only. Seasonal. Chart:1235 Edn 02/09 (Q09-004)

SECTION 5 – Edition 02/2009
LIST OF LIGHTS, BUOYS AND FOG SIGNALS CORRECTIONS

No.	Name	Position ----- Latitude N. Longitude W.	Light Characteristics	Focal Height in m. above water	Nomi- nal Range	Description ----- Height in meters above ground	Remarks ----- Fog Signals
-----	------	--	--------------------------	--	-----------------------	--	---------------------------------

ATLANTIC

2292 H2460	Lavaltrie range	On shore, E. side of Lavaltrie Island. 45 52 59.1 73 15 50.1	F	G	7.9	16	White square tower, orange daymark, black vertical stripe. 3.8	Visible in line of range. Year round.
2293 H2460.1		Racon -. (N) X & S Band	On pier, 208°34' 560.8m from front.	F	G	19.9	16	Skeleton tower, orange slatwork daymark, black vertical stripe. 16.4
2317 H2478	Traverse Verchères range	On S. shore. 45 47 46.2 73 19 38.6	F	G	15.8	16	White cylindrical tower, orange rectangular daymark, black vertical stripe.	Emergency light. Visible in line of range. Year round.
2318 H2478.1		056°03' 494.5m from front.	F	G	25.8	16	Square skeleton tower, orange rectangular daymark, black vertical stripe.	Emergency light. Visible in line of range. Year round.

**Chart:1311
Edn 02/09 (Q08-106,107)**

**Chart:1311
Edn 02/09 (Q08-105)**

INLAND WATERS

32.3	Melocheville range	45 19 10.3 73 56 33.1	F	G	10.1	17	White cylindrical tower, orange daymark, black vertical stripe. 7.3	Visible in line of range. Night emergency light. Seasonal.
32.4		241°29' 1294m from front.	F	G	29.6	17	Square skeleton tower, orange daymark, black vertical stripe. 13.6	Visible in line of range. Night emergency light. Seasonal.
612.8	Leamington Harbour Main Entrance	42 01 28.2 82 36 04.7	Iso	G	4s	10.0	6	White cylindrical tower, green upper portion. 6.3	Visible over an arc of 360°; reduced intensity of 180°; from 120° through S. and W. to 300°. Seasonal.
615.5	Kingsville Ferry Wharf	42 01 31.5 82 43 52.1	Fl	R	4s	9.1	7	White cylindrical tower, red upper portion. 6.4	Visible over an arc of 360°. Year round.

**Chart:1410
Edn 02/09(Q08-103)**

**Chart:2181
Edn 02/09(B09-001)**

**Chart:2181
Edn 02/09(B09-002)**

**CANADIAN COAST GUARD
MARINE INFORMATION REPORT AND SUGGESTION SHEET**

Date:

Name of Ship or Sender:.....

Address of Sender:

Street #

Street Name

Town / City:..... Prov / State: Postal Code / Zip Code:

Tel / Fax / E-mail address of sender (if appropriate):

Observation Date: Time (UTC):

Geographical Position:.....

Coordinate Position: Lat: Long:.....

Position Method: DGPS GPS with WAAS GPS Radar Other

Horizontal Datum Used: WGS 84 NAD 27 Other

Estimated Position Accuracy:.....

Chart #: Datum: NAD 27 NAD 83

Chart Edition: Last Correction applied:

Publications affected: (Quote Volume and page):.....

*Full details (Attach additional sheets as necessary)

Mariners are requested to notify the responsible authorities when new or suspected dangers to navigation are discovered, changes are observed in aids to navigation, or corrections to publications are seen to be necessary.

In the case of new or suspected dangers to navigation, it is important that all details be given in order to aid with future investigations. Items of interest include heights, depths, physical description, type of bottom and equipment method used to position the item. It is helpful to mark details on chart, which will be promptly replaced by the Canadian Hydrographic Service.

Reports should be made to the nearest Marine Communications and Traffic Services Centre (MCTS) and should be confirmed in writing to:

Director, Navigation Systems
Canadian Coast Guard
Department of Fisheries and Oceans
Ottawa, Ontario, K1A 0E6

In the case of information concerning aids to navigation or the List of Lights, Buoys and Fog Signals.

OR

Dominion Hydrographer
Canadian Hydrographic Service
Department of Fisheries and Oceans
Ottawa, Ontario, K1A 0E6

In the case of new or suspected dangers to navigation or where corrections to "Sailing Directions" appear to be necessary.

CHSINFO@DFO-MPO.GC.CA

Or general questions on Coast Guard programs or services please send an e-mail message to:

info@dfo-mpo.gc.ca

(Please include your postal code and e-mail address)