



Fisheries and Oceans  
Canada

Pêches et Océans  
Canada

Canadian  
Coast Guard

Garde côtière  
canadienne

# NOTICES TO MARINERS PUBLICATION EASTERN EDITION

MONTHLY EDITION N° 6  
JUNE 26, 2015



Safety First, Service Always

Published monthly by the  
**CANADIAN COAST GUARD**  
[www.notmar.gc.ca/subscribe](http://www.notmar.gc.ca/subscribe)

## CONTENTS

	Page
Section 1	Safety and General Information..... 1 - 9
Section 2	Chart Corrections ..... 10 - 24
Section 3	Radio Aids to Marine Navigation Corrections ..... 25 - 44
Section 4	Sailing Directions and Small Craft Guide Corrections ..... 45 - 51
Section 5	List of Lights, Buoys and Fog Signals Corrections ..... 52 - 53

Canadian Coast Guard Programs  
Aids to Navigation and Waterways

## EXPLANATORY NOTES

**Geographical positions** refer directly to the graduations of the largest scale Canadian Hydrographic chart unless otherwise indicated.

**Bearings** refer to the true compass and are measured clockwise from 000° (North) clockwise to 359°; those relating to lights are from seaward.

**Visibility** of lights is that in clear weather.

**Depths** - The units used for soundings (metres, fathoms or feet) are stated in the title of each chart.

**Elevations** are normally given above Higher High Water, Large Tides unless otherwise indicated.

**Distances** may be calculated as follows:

1 nautical mile	= 1 852 metres (6,076.1 feet)
1 statute mile	= 1 609.3 metres (5,280 feet)
1 metre	= 3.28 feet

**Temporary & Preliminary Notices** are indicated by a (T) or a (P) in the section 1. Please note that Nautical charts are not amended by the Canadian Hydrographic Service for Temporary (T) and Preliminary (P) Notices. It is recommended that mariners chart these corrections in pencil. Listing of charts affected by Temporary and Preliminary Notices are revised and promulgated quarterly in Section 1 of the Monthly Edition.

**Please note that, in addition to the temporary and preliminary changes normally advertised as (T) and (P) Notices, there are a few permanent changes to navigational aids that have been advertised as Preliminary Notices to Mariners while charts are being updated for new editions.**

**Marine Information Report & Suggestion Sheet** - Mariners are requested to notify the responsible authorities when new or suspected dangers to navigation are discovered, changes observed in aids to navigation or corrections to publications are seen to be necessary. Such communications can be made using the *Marine Information Report & Suggestion Sheet* inserted on the last page of each monthly edition of *Notices to Mariners*.

**Canadian Hydrographic Service – Information Published in Section 2 Notices to Mariners** - Mariners are advised that only the most critical changes that directly affect safety to navigation are issued in Chart Corrections - Section 2. This limitation is required to ensure that charts remain as clear and easy to read as possible. As a result, mariners may see minor discrepancies of a non-critical nature between information in official publications. For example, a small change in the nominal range or height of a light may not result in the production of a chart correction, in *Notices to Mariners*, but may result in a *List of Light, Buoys and Fog Signals* correction.

**In case of discrepancy between information provided on CHS charts related to aids to navigation, and the List of Light publication, the latter shall be deemed as containing the most up to date information**

**Canadian Nautical Charts & Publications** - A source list of *Canadian Nautical Charts & Publications* is published in Notice No. 14 of the *Notices to Mariners Annual Edition April 2014*. The source supply and the prices effective at the time of printing are listed. For current chart edition dates refer to the following website:

[www.chs-shc.gc.ca/charts-cartes/paper-papier/index-eng.asp](http://www.chs-shc.gc.ca/charts-cartes/paper-papier/index-eng.asp)

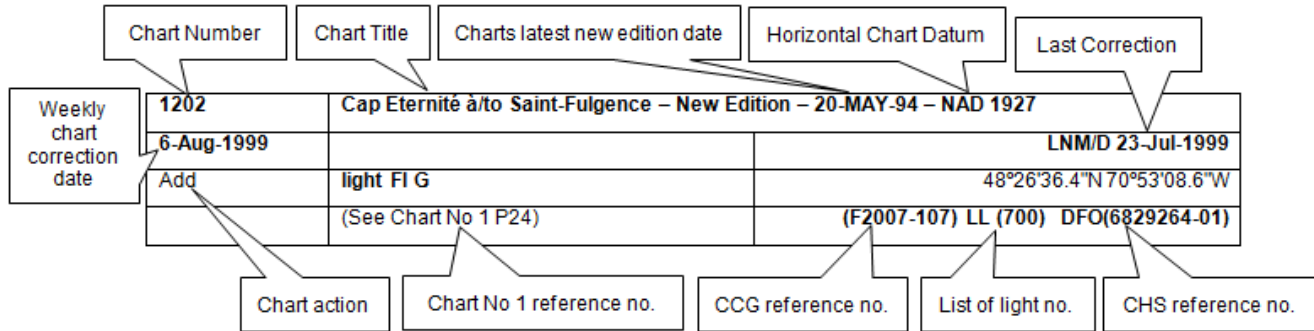
**NOTE: Cette publication est aussi disponible en français.**

## CHART CORRECTIONS - SECTION 2

Corrections to nautical charts will be listed in numeric order by chart number. Each chart correction listed applies only to that particular chart. Related charts, if any, will have their own specific correction listed separately.

Users should also refer to CHS Chart 1 Symbols, Abbreviations Terms for additional information pertaining to the correction of charts.

The illustration below describes the elements that will comprise a typical Section 2 chart correction:



The last correction number is identified with the **LNMD** or **Last Notice to Mariners Number / Date**. This number is expressed in either old notice number format (ex.: 594/99) or in day-month-year format which is the date known as the weekly chart correction date shown in the above diagram as item (8).

## MONTHLY EDITION OF NOTICES TO MARINERS.

### WEB ACCESS.

We are offering a feature where subscribers to our on-line service are able to receive the complete electronic monthly edition of our Notices to Mariners. We are encouraging our clients to visit the

[www.notmar.gc.ca/subscribe](http://www.notmar.gc.ca/subscribe) website to subscribe for this service.

Users wishing to receive information updates for their charts can do so by setting up a "User Profile" on the following web page

[www.notmar.gc.ca/search/mycharts-eng.php?czoxOToibnRtPXN0ZXBfb25lJmxbmc9ZSI7](http://www.notmar.gc.ca/search/mycharts-eng.php?czoxOToibnRtPXN0ZXBfb25lJmxbmc9ZSI7)

This feature permits users to register the nautical charts they currently have in their possession.

Registrants are then automatically notified by e-mail when a Notice to Mariners is published concerning these charts.

## ADVISORY NOTICES TO SHIPPING (WRITTEN AND BROADCAST).

The Canadian Coast Guard is implementing a number of changes to the aids to navigation system in Canada. These changes are advertised as Notices to Shipping (Broadcast and Written) by the Canadian Coast Guard and are followed up with Notices to Mariners, then charts are updated by hand correction, reprints or new editions.

Mariners are advised that all relevant Written Notices to Shipping should be kept until superseded by Notices to Mariners or through revised charts issued by the Canadian Hydrographic Service.

Written Notices to Shipping are available on the Canadian Coast Guard Website at [www.ccg-gcc.gc.ca/eng/CCG/NOTSHIP](http://www.ccg-gcc.gc.ca/eng/CCG/NOTSHIP)

The Canadian Hydrographic Service is reviewing the impact of these changes with the Canadian Coast Guard and together are preparing an action plan on the issuing of chart revisions.

For further information contact your local Regional Notices to Shipping (Notships) issuing authorities.

### **Newfoundland**

\* Fisheries and Oceans Canada  
Canadian Coast Guard  
Port aux Basques MCTS Centre  
49 Stadium Road  
P.O. Box 99  
PORT AUX BASQUES, NL A0M 1C0  
Telephone : (709) 695-2168  
Facsimile : (709) 695-7784  
Email : [notshippax@dfo-mpo.gc.ca](mailto:notshippax@dfo-mpo.gc.ca)  
Website: <http://www.ccg-gcc.gc.ca/e30407>

### **Québec**

\* Fisheries and Oceans Canada  
Canadian Coast Guard  
Les Escoumins MCTS Centre  
5 Otis street,  
LES ESCOUMINS, QC  
G0T 1K0  
Telephone: (418) 233-2308  
Facsimile: (418) 233-3299  
Website: [www.marinfo.gc.ca/](http://www.marinfo.gc.ca/);  
<http://www.marinfo.gc.ca/en/avisecrits/index.asp>  
Website: [www.ccg-cc.gc.ca/eng/CCG/Notship\\_Home](http://www.ccg-cc.gc.ca/eng/CCG/Notship_Home)

### **Maritimes**

\* Fisheries and Oceans Canada  
Canadian Coast Guard  
Sydney MCTS Centre  
1190 Westmount Road  
SYDNEY, N.S, B1R 2J6  
Telephone: (902) 564-7751 or 1-800-686-8676  
Facsimile: (902) 564-2446  
Email: [notshipssyd@mar.dfo-mpo.gc.ca](mailto:notshipssyd@mar.dfo-mpo.gc.ca)  
Website: <http://www.ccg-gcc.gc.ca/e30406>

### **Central & Arctic**

\* Fisheries and Oceans Canada  
Canadian Coast Guard  
Marine Communications and Traffic Services  
Notices to Shipping Series "C"  
401 King Street West  
PRESCOTT, ON K0E 1T0  
Telephone (613) 925-0666 or 1-800 265 0237  
Facsimile: (613) 925-4519  
Email: [NotshipC&A@DFO-MPO.GC.CA](mailto:NotshipC&A@DFO-MPO.GC.CA)  
Website: [www.ccg-cc.gc.ca/eng/CCG/Notship-Home](http://www.ccg-cc.gc.ca/eng/CCG/Notship-Home)

\* Fisheries and Oceans Canada  
Canadian Coast Guard  
Iqaluit MCTS Centre  
Notices to Shipping Series "A" and Series "H"  
P.O. Box 189  
IQALUIT NU X0A 0H0  
Telephone: (867) 979-5269  
Facsimile: (867) 979-4264  
Email: [IQANORDREG@INNAV.GC.CA](mailto:IQANORDREG@INNAV.GC.CA)  
Website: [www.ccg-cc.gc.ca/eng/CCG/Notship\\_Home](http://www.ccg-cc.gc.ca/eng/CCG/Notship_Home)

\* Services provided in English and French.

---

**INDEX.**

---

CANADIAN HYDROGRAPHIC SERVICE - ANNOUNCEMENT REGARDING CANADIAN HYDROGRAPHIC SERVICE CHART PATCHES.....	1
CANADIAN HYDROGRAPHIC SERVICE - CUMULATIVE CHART CORRECTIONS. ....	1
CANADIAN HYDROGRAPHIC SERVICE - CURRENT CHART EDITION DATES. ....	1
CANADIAN HYDROGRAPHIC SERVICE - PRINT ON DEMAND CHARTS - CARE AND USE.....	1
CANADIAN HYDROGRAPHIC SERVICE - TRANSPORT CANADA NAVIGATION SAFETY – ECDIS. ....	2
UPDATE TO CONSOLIDATION OF MARINE COMMUNICATIONS AND TRAFFIC SERVICES (MCTS) CENTRES.....	2
SAGUENAY-ST. LAWRENCE MARINE PARK AND SURROUNDING WATERS - WHALE PROTECTION.....	2
CANADIAN COAST GUARD PUBLICATION - RADIO AIDS TO MARINE NAVIGATION (ATLANTIC, ST. LAWRENCE, GREAT LAKES, LAKE WINNIPEG AND EASTERN ARCTIC) PUBLICATION – 2014 - THE COMMERCIAL PUBLIC CORRESPONDENCE SERVICE. ....	4
TRANSPORT CANADA - RESTRICTED SPEED AREA - ST. CLAIR AND DETROIT RIVER. ....	4
*601 SERVICE HYDROGRAPHIQUE DU CANADA - CARTES MARINES .....	4
*602 SERVICE HYDROGRAPHIQUE DU CANADA - CARTES ÉLECTRONIQUES DE NAVIGATION.....	4
*603(P) CARAQUET HARBOUR, BAIE DE SHIPPEGAN AND/ET MISCOU HARBOUR – AIDS TO BE CHANGED.....	5
*604 TRANSPORT CANADA - SHIP SAFETY BULLETIN.....	6
*605 TRANSPORT CANADA – SHIP SAFETY BULLETIN.....	6
*606 ENTRÉ À/ENTRANCE TO MIRAMICHI RIVER – RANGE DISCONTINUED.....	6
*607 PORT SEVERN TO/À PARRY SOUND – BUOY RELOCATED AND AID CODE CHANGED.....	6
*608 PAPINEAUVILLE À/TO OTTAWA – RELOCATED BUOY.. ....	6
*609(P) MUSQUODOBOIT HARBOUR - AIDS TO BE CHANGED.....	7
*610(P) TAYLORS HEAD TO/À SHUT-IN ISLAND - BELL TO BE REMOVED .....	7
*611(P) MIRAMICHI – RANGE TO BE DISCONTINUED.....	8
*612(P) PORT ELGIN/BAIE VERTE – BUOY TO BE DISCONTINUED.....	8
*613 ANNUAL EDITON NOTICES TO MARINERS 1 TO 46. UPDATE TO SECTION C.....	9
*614 RADIO AIDS TO MARINE NAVIGATION 2015, (ATLANTIC, ST. LAWRENCE, GREAT LAKES, LAKE WINNIPEG AND ARCTIC).....	25

**NUMERICAL INDEX OF CANADIAN CHARTS AFFECTED.**

<b>Chart No.</b>	<b>Page</b>	<b>Chart No.</b>	<b>Page</b>	<b>Chart No.</b>	<b>Page</b>
1230	10	4308	18		
1236	10	4335	18		
1312	10	4377	18		
1313	11, 12	4385	18		
1320	12	4406	9, 19		
1509	12	4429	19		
1514	12, 13	4432	19		
1515	6	4440	19, 20		
2029	13	4530	20		
2058	13	4617	20		
2120	13	4825	21		
2202	6,13	4855	21		
2228	13	4858	21		
2243	13, 14	4905	21		
4000	14	4911	6, 22		
4001	14	4912	8		
4006	14	4913	5		
4012	15	4921	22		
4017	15	5001	22		
4023	15	6427	4		
4025	15	7083	22		
4026	15	7121	22, 23		
4117	15, 16	7122	23		
4230	16	7736	23		
4235	16	8006	23		
4236	7	8014	23		
4237	16, 17	8015	23		
4241	17	8049	24		
4242	17				
4277	17				
4279	17, 18				

Monthly Notices to Mariners - Eastern Edition  
Edition 6/2015

SECTION 1  
CORRECTIONS TO SAFETY AND GENERAL INFORMATION

**CANADIAN HYDROGRAPHIC SERVICE - ANNOUNCEMENT REGARDING CANADIAN HYDROGRAPHIC SERVICE CHART PATCHES.**

Colour Web Patches are free to the mariner, and given the quality of many printers, should reproduce well. They will be available in real time all around the world.

CHS welcomes your feedback on this service at [chsinfo@dfo-mpo.gc.ca](mailto:chsinfo@dfo-mpo.gc.ca)

**CANADIAN HYDROGRAPHIC SERVICE - CUMULATIVE CHART CORRECTIONS.**

The cumulative Notices to Mariners corrections for charts can now be accessed at [www.notmar.gc.ca/search/notmar-eng.php](http://www.notmar.gc.ca/search/notmar-eng.php).

**CANADIAN HYDROGRAPHIC SERVICE - CURRENT CHART EDITION DATES.**

**CHART EDITIONS**

The three terms described below are used to indicate the publication status of Canadian charts.

**NEW CHART - "NEWCHT"**

The first publication of a Canadian chart embracing an area not previously charted to the scale shown, or embracing an area different from any existing Canadian chart.

**NEW EDITION - "NEWEDT".**

A new issue of an existing chart containing amendments essential to navigation in addition to those issued in Notices to Mariners and making existing editions obsolete.

**REPRINTS.**

A new issue of the current edition of a chart incorporating no amendments of navigational significance other than those previously promulgated in Notices to Mariners. It may also contain amendments from other sources provided they are not essential to navigation. Previous printings of the current edition remain in force.

The current chart edition dates can be accessed at [www.chs-shc.gc.ca/charts-cartes/paper-papier/index-eng.asp](http://www.chs-shc.gc.ca/charts-cartes/paper-papier/index-eng.asp)

**CANADIAN HYDROGRAPHIC SERVICE - PRINT ON DEMAND CHARTS - CARE AND USE.**

**Background.**

By providing nautical charts to the public, the goal of the Canadian Hydrographic Service (CHS) is to provide services for safe navigation in a fiscally responsible manner. As a result, CHS continues to expand its portfolio of nautical paper charts that are printed using Print On Demand (POD) technology. These charts are easily recognized by their whiter paper and the coloured logo of the Canadian Hydrographic Service. This new technology enables CHS to print charts in a more efficient manner while enhancing chart content through being able to quickly add new and important information. POD technology provides customers with up-to-date charts without the historical hand-drawn corrections or glued-on patches. Additionally, this technology eliminates out-of-stock situations which arise with the traditional printing and warehousing methods. In the event of a national emergency, CHS can respond to the appropriate authorities with best available information very quickly.

**Care of Your POD Chart.**

CHS encourages its customers to handle the POD charts more carefully than the traditional lithographic charts. When plotting information on POD charts, use HB pencils and apply limited pressure. Testing has suggested that an Indian gum eraser is more effective than alternatives when used on the product. This eraser is also suitable for charts printed using lithographic processes.

**Monthly Notices to Mariners - Eastern Edition  
Edition 6/2015**

**SECTION 1  
CORRECTIONS TO SAFETY AND GENERAL INFORMATION**

**CANADIAN HYDROGRAPHIC SERVICE - TRANSPORT CANADA NAVIGATION SAFETY – ECDIS.**

Mariners are advised that ECDIS may not display some isolated shoal depths when operating in "base or standard display" mode. Route planning and monitoring alarms for these shoal depths may not always be activated. To ensure safe navigation and to confirm that a planned route is clear of such dangers, mariners should visually inspect the planned route and any deviations from it using ECDIS configured to display "all data". The automated voyage planning check function should not be solely relied upon.

**UPDATE TO CONSOLIDATION OF MARINE COMMUNICATIONS AND TRAFFIC SERVICES (MCTS) CENTRES.**

The Canadian Coast Guard is modernizing and consolidating its Marine Communications and Traffic Services Centres. Clients will continue to receive the high-quality service they have come to expect.

Once complete, there will be a total of 12 MCTS Centres strategically located across the country. Additional information pertaining to this project will be advertised to clients by all available means.

**Atlantic Region**

Saint John (Fundy) MCTS Centre will consolidate to Halifax MCTS Centre commencing March 2015  
St. John's MCTS Centre will consolidate to Placentia MCTS Centre commencing March 2015  
St. Anthony MCTS Centre will consolidate to Labrador (Goose Bay) MCTS Centre commencing August 2015

**Central & Arctic Region**

Thunder Bay MCTS Centre will consolidate to Sarnia MCTS Centre commencing May 2015.  
Rivière-au-Renard MCTS centre will consolidate to Les Escoumins MCTS centre commencing June 2015.

The new technology will increase efficiency permitting employees to have a greater ability to focus on the safety services they provide to mariners. Mariners are encouraged to visit the Radio Aids to Marine Navigation (RAMN), <http://www.ccg-gcc.gc.ca/Marine-Communications/Home> and Notices to Mariners (NOTMAR), <http://www.notmar.gc.ca/> PART 3 on a monthly basis for updated information and potential changes to contact information and marine broadcast schedules.

**SAGUENAY-ST. LAWRENCE MARINE PARK AND SURROUNDING WATERS - WHALE PROTECTION**

The waters in and around the Saguenay-St. Lawrence Marine Park are well known for their resident threatened beluga population and the wide diversity of whales that migrate there to feed, particularly between April and November.

**REGULATORY PROTECTION MEASURES**

All whale species that are found in the St. Lawrence are protected under the *Marine Mammal Regulations*, pursuant to the *Fisheries Act*. Within the boundaries of the Marine Park, specific measures are set out in the *Marine Activities in the Saguenay–St. Lawrence Marine Park Regulations*, pursuant to the *Act Establishing the Saguenay-St. Lawrence Marine Park*. Any collision with a marine mammal within the Marine Park must immediately be reported to a park warden at 1-866-508-9888. For collisions that occur outside the Marine Park or for any situation involving a marine mammal that is dead or in trouble, contact the emergency network at 1-877-722-5346 or on channel 16.

For more information on the Saguenay-St. Lawrence Marine Park, see section 5C of the Annual Edition of the Notices to Mariners – April 2015 to March 2016.



SECTION 1  
CORRECTIONS TO SAFETY AND GENERAL INFORMATION

VOLUNTARY PROTECTION MEASURES

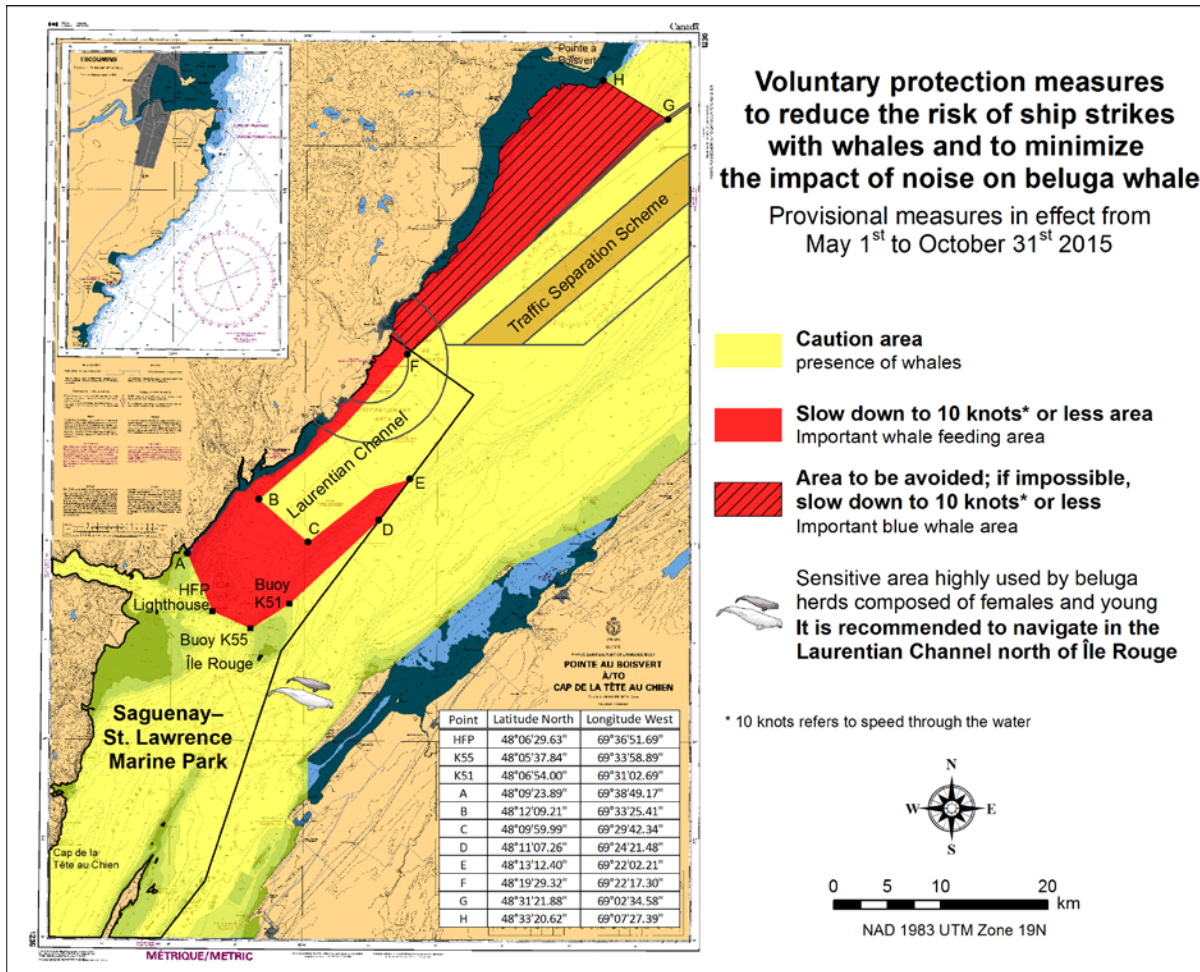
Provisional measures in effect from May 1<sup>st</sup> to October 31<sup>st</sup>, 2015. See map below.

These measures apply to merchant vessels and cruise ships between Pointe à Boisvert and Cap de la Tête au Chien to prevent collisions with whales. These measures should only be taken when they will not jeopardize navigational safety.

**Caution area (yellow area):** To reduce the risk of collisions with whales that can be present anywhere in this area, heightened vigilance of navigators is critical. Posting a lookout is recommended in order to increase the chances of seeing the whales and thus taking necessary measures to avoid them. If bypassing the whales is not possible, slow down and wait for the animals to move away to a distance greater than 400 meters (0.215 nautical miles) before resuming original speed. It is more difficult to see the animals at night therefore increased caution is recommended.

**Slow down to 10 knots or less area (red area):** To reduce the risk of collisions with whales in this feeding area, it is recommended that vessels slow down to a maximum speed through the water of 10 knots and post a lookout. It is further recommended to remain in the Laurentian Channel to the north of Île Rouge to minimize the impact of noise in a sensitive area south of this island, which is highly frequented by herds of beluga whales composed of females and young.

**Area to be avoided (hatched red area):** To reduce noise and the risk of collisions with whales, vessels should avoid transiting through this area which is highly frequented by blue whales, an endangered species. If the area cannot be avoided, slow down to a speed through the water of 10 knots or less.



SECTION 1  
CORRECTIONS TO SAFETY AND GENERAL INFORMATION

CANADIAN COAST GUARD PUBLICATION - RADIO AIDS TO MARINE NAVIGATION (ATLANTIC, ST. LAWRENCE, GREAT LAKES, LAKE WINNIPEG AND EASTERN ARCTIC) PUBLICATION – 2014 - THE COMMERCIAL PUBLIC CORRESPONDENCE SERVICE.

Part I – Page 1 of 10  
ADVANCE NOTICES

**The Commercial Public Correspondence Service**

Effective January 1, 2014, the following changes to the Canadian Coast Guard commercial public correspondence service, provided through select Marine Communications and Traffic Services centres, will be in effect:

All *long distance ship-shore calls* will be administered through the regular telephone service provider as a *collect call*.

Individuals intending to place *shore-ship calls* will be required to direct-dial the appropriate MCTS centre.

MCTS centres providing a commercial public correspondence service are identified in RAMN, Part 2.

**TRANSPORT CANADA - RESTRICTED SPEED AREA - ST. CLAIR AND DETROIT RIVER.**

Since November 14, 2012 the restricted speed area currently in place as per the St. Clair and Detroit River Navigation Safety Regulation between the Detroit River light and Peche Island light is reduced in size by relocating the southern point of the restricted speed area from its current location at the Detroit River light to a new location at Bar Point light D33. (This notice refers to the previous one published in November 2012 with number \*1103)

**\*601 CANADIAN HYDROGRAPHIC SERVICE - NAUTICAL CHART.**

CHARTS	MAIN TITLE	SCALE	PUBLISHED	CAT#	PRICE
<b>New Editions</b>					
6427	Point Separation to/au Aklavik Channel Kilometre 1480 / Kilomètre 1540	1:50000	30-JAN-2015	4	12.00

**\*602 CANADIAN HYDROGRAPHIC SERVICE - ELECTRONIC NAVIGATIONAL CHART.**

<b>NEW PRODUCT</b>	
<b>S-57 ENC NUMBER</b>	<b>CHART TITLE</b>
CA576723	Escuminac

**Monthly Notices to Mariners - Eastern Edition  
Edition 6/2015**

**SECTION 1  
CORRECTIONS TO SAFETY AND GENERAL INFORMATION**

**\*603(P) CARAQUET HARBOUR, BAIE DE SHIPPEGAN AND/ET MISCOU HARBOUR – AIDS TO BE CHANGED.**

Reference chart: 4913

The Canadian Coast Guard proposes the following permanent changes:

Floating Aids		
List of Lights Number	Name	Proposed Change(s)
6262.423	Fox Dens Gully Conical Plastic Buoy	Positioned at 47 53 5.28N 064 30 29.82W. Flash characteristics 2cd w/White (Q)1s.
EAA New Establishment	New Establishment	A new lit buoy, 2cd, with a white (Q(6)+LFI) 15s flash to be established at 47 53 5.52N 064 30 31.38W.
EAB New Establishment	New Establishment	A new unlit buoy to be established at 47 53 2.82N 064 30 36.06W.
EA41 New Establishment	New Establishment	New lit buoy, positioned at 47 53 0.66N 064 30 37.14W.
EA40 6272.3	Miscou Harbour Plastic Can Buoy	Change flash characteristics to Green Q FI 1s 2cd, and relocate buoy to 47 52 57.06 064 30 50.16W.
EA39 New Establishment	New Establishment	A new unlit buoy to be established at 47 52 57.06N 064 30 50.16W.
EA38 6272.29	Miscou Harbour Plastic Can Buoy	Relocate buoy to 47 52 57.18N 064 30 59.46W, and change flash characteristics to green FI 4s,2cd.
EA37 New Establishment	New Establishment	A new lit buoy to be positioned at 47 52 56.4N / 064 30 58.68W.
EA36 6272.28	Miscou Harbour Plastic Can Buoy	Relocate buoy to 47 52 55.2N 064 31 12.42W.
EA35 New Establishment	New Establishment	A new unlit buoy to be established at 47 52 52.68N 064 31 24.48W.
EA32 1272.10	Miscou Harbour Bouy	Relocate buoy to 47 52 50.76N / 064 31 37.14W, and change flash characteristics to FI 1s., 2cd.
EA30 6272.26	Miscou Harbour Plastic Can Buoy	Add lantern with Green FI 4s, and min. of 2cd. Relocate buoy to 47 52 51.54N / 064 31 37.44W.
EA31		

Comments on this action are solicited from mariners and other interested parties. Comments should be directed to

Superintendent, Aids to Navigation,  
Canadian Coast Guard by  
PO Box 1236,  
Charlottetown, Prince Edward Island, C1A 7M8  
Telephone: 902-566-7936,  
Email: [claire.maclaren@dfo-mpo.gc.ca](mailto:claire.maclaren@dfo-mpo.gc.ca)

Any objections raised must state the facts on which they are based and should include supporting information on safety, commerce and public benefit within three months from the date of this Notice.

(G2015-047)

Monthly Notices to Mariners - Eastern Edition  
Edition 6/2015

SECTION 1  
CORRECTIONS TO SAFETY AND GENERAL INFORMATION

**\*604 TRANSPORT CANADA - SHIP SAFETY BULLETIN.**

This is to notify you that a new Ship Safety Bulletin has recently been posted to the Transport Canada website at [www.tc.gc.ca/ssb-bsn/](http://www.tc.gc.ca/ssb-bsn/).

To go online to view or download this bulletin, please click on the link below:

[SSB#06/2015](#) – Safety of Dead Ship Towing Operations - RDIMS#10506677

Sign yourself up for e-Bulletin to receive an e-mail notice each time a new Ship Safety Bulletin is published on our Website.

Contact us at [marinesafety-securitemaritime@tc.gc.ca](mailto:marinesafety-securitemaritime@tc.gc.ca) or 1-855-859-3123 (Toll Free)

**\*605 TRANSPORT CANADA – SHIP SAFETY BULLETIN.**

This is to notify you that an updated Ship Safety Bulletin has recently been posted to the Transport Canada website at [www.tc.gc.ca/ssb-bsn/](http://www.tc.gc.ca/ssb-bsn/).

To go online to view or download the bulletin, please click on the links below:

[SSB#03/2015](#) – Sheltered waters voyages (**amendment 2015-05-29**) - RDIMS#10385708

Sign yourself up for e-Bulletin to receive an e-mail notice each time a new Ship Safety Bulletin is published on our Website.

Contact us at [marinesafety-securitemaritime@tc.gc.ca](mailto:marinesafety-securitemaritime@tc.gc.ca) or 1-855-859-3123 (Toll Free)

**\*606 ENTRÉ À/ENTRANCE TO MIRAMICHI RIVER – RANGE DISCONTINUED.**

Reference: Notice 707(P)/2014 LL 1173.15 and LL1173.16 is now cancelled. (Chart 4911)

(G2015-030-031)

**\*607 PORT SEVERN TO/À PARRY SOUND – BUOY RELOCATED AND AID CODE CHANGED.**

Reference Chart: 2202

The Canadian Coast Guard have permanently changed the aid code and relocated the following aid :

Georgian Bay-port Severn Bridge LL 8047.9

New aid code C9  
new position 44 47' 57.24  
079 43' 23.76

(D2015-001)

**608 PAPINEAUVILLE À/TO OTTAWA – RELOCATED BUOY.**

Reference Chart: 1515

The Canadian Coast Guard have permanently relocated the following aid to navigation:

Parc national 2, LL 11981.0 (45° 35'35.1"N 075°05' 01.7"W)

(Q2015-054)

Monthly Notices to Mariners - Eastern Edition  
Edition 6/2015

SECTION 1  
CORRECTIONS TO SAFETY AND GENERAL INFORMATION

**\*609(P) MUSQUODOBOIT HARBOUR - AIDS TO BE CHANGED.**

Reference Chart: 4236

The Canadian Coast Guard proposes to make the following permanent changes to the aids to navigation in the Musquodoboit Harbour area:

- LLNO 5566.01 YV5 – Discontinue
- LLNO 5566.02 YV7 - Add green lantern, Fl 4s, change LLNO 566.02
- LLNO 5566.03 YV10 - Add Red lantern, quick flash, change LLNO 566.03, reposition to 44 41.16N 063 04.775W
- LLNO 5566.04 YV11 – Add green lantern, Fl 4s, change LLNO 566.04, reposition to 44 41.437N 063 04.792W
- LLNO 5566.05 YV12 – Add red lantern, Fl 4s, change LLNO 566.05, reposition to 44 41.437N 063 04.714W
- LLNO 5566.06 YV13 – Add green lantern, Fl 4s, change LLNO 566.06, reposition to 44 41.567N 063 04.729W
- LLNO 5566.07 YV14 – Discontinue
- LLNO 5566.08 YV15 – Add green lantern, quick flash, change LLNO 566.08, reposition to 44 41.685N 063 04.745W
- LLNO 5566.09 YV16 – reposition to 44 41.823N 063 04.750W
- LLNO 5566.10 YV17 – reposition to 44 42.07N 064 04.904W
- LLNO 5566.11 YV18 – add red lantern, quick flash, change LLNO 566.11, reposition to 44 42.52N 063 04.95W
- LLNO 5566.13 YV22- Discontinue (replaced by YV20)
- LLNO 5566.115 YV20 - rename to Musquodoboit (NE Francis Nose Is.) Spar Buoy YV20, reposition to 44 42.962N 063 05.052W (YV22 position)
- LLNO 5566.12 YV21 – add green lantern with quick flash

Comments on this action are solicited from mariners and other interested parties within three month from the date of this Notice. Comments should be directed to:

Superintendent, Aids to Navigations,  
Canadian Coast Guard  
P.O. Box 5667,  
St. John's, NL, A1C 5X1  
Telephone: 709-772-5195,

Any objections raised must state the facts on which they are based and should include supporting information on safety, commerce and public benefit within three months from the date of this Notice.

(F2015-19)

**\*610(P) TAYLORS HEAD TO À SHUT-IN ISLAND - BELL TO BE REMOVED**

Reference Chart: 4236

The Canadian Coast Guard proposes to permanently discontinue the following aid to navigation:

Musquodoboit Ledge light and Bell Buoy YV3 – Sound to be removed (Bell), LL 566.5 (44°39'36.0"N 63° 04'16.0"W)

Comments on this action are solicited from mariners and other interested parties.  
Comments should be directed to:

Superintendent, Aids to Navigations,  
Canadian Coast Guard  
P.O. Box 5667, St. John's, NL, A1C 5X1  
Email: [Claire.maclaren@dfo-mpo.gc.ca](mailto:Claire.maclaren@dfo-mpo.gc.ca)  
Telephone: 709-772-5195,

Any objections raised must state the facts on which they are based and should include supporting information on safety, commerce and public benefit.

(F2015-018)

SECTION 1  
CORRECTIONS TO SAFETY AND GENERAL INFORMATION

**\*611(P) MIRAMICHI – RANGE TO BE DISCONTINUED.**

Reference chart: 4912

The Canadian Coast guard proposed to permanently discontinue the following Aids to navigation:

Newcastle range, front LL 1218 (47°00' 57.9"N 065° 32' 44.1W)  
Rear LL 1219 (47°00'58.1"N 065° 32'46.4"W)

Comments on this action are solicited from mariners and other interested parties.  
Comments should be directed to the following within three months from the date of this notice:

Superintendent, Aids to Navigations and Waterways,  
Canadian Coast Guard  
PO Box 1236,  
Charlottetown, Prince Edward Island, C1A 7M8  
Email: [Claire.maclaren@dfo-mpo.gc.ca](mailto:Claire.maclaren@dfo-mpo.gc.ca)  
Telephone: 709-772-5195,

Any objections raised must state the facts on which they are based and should include supporting information on safety, commerce and public benefit.

(G2015-032)  
(G2015-034)

**\*612(P) PORT ELGIN/BAIE VERTE – BUOY TO BE DISCONTINUED.**

The Canadian Coast Guard proposes to permanently discontinue the following buoys:

PLAS10 - 6094.54 - Port Elgin - Baie Verte can plastic buoy  
6094.53 - Port Elgin - Baie Verte can plastic buoy  
6094.52 - Port Elgin - Baie Verte can plastic buoy  
6094.51 - Port Elgin - Baie Verte can plastic buoy  
6094.50 - Port Elgin - Baie Verte can plastic buoy  
6094.49 - Port Elgin - Baie Verte can plastic buoy  
6094.48 - Port Elgin - Baie Verte can plastic buoy  
6094.47 - Port Elgin - Baie Verte can plastic buoy  
6094.46 - Port Elgin - Baie Verte can plastic buoy  
6094.31 - Port Elgin - Baie Verte can plastic buoy

PLAS15 - 6094.30 - Port Elgin - Baie Verte can plastic buoy  
6094.45 - Port Elgin - Baie Verte can plastic buoy  
6094.44 - Port Elgin - Baie Verte can plastic buoy  
6094.43 - Port Elgin - Baie Verte can plastic buoy  
6094.42 - Port Elgin - Baie Verte can plastic buoy  
6094.41 - Port Elgin - Baie Verte can plastic buoy  
6094.40 - Port Elgin - Baie Verte can plastic buoy  
6094.39 - Port Elgin - Baie Verte can plastic buoy  
6094.38 - Port Elgin - Baie Verte can plastic buoy  
6094.37 - Port Elgin - Baie Verte can plastic buoy  
6094.36 - Port Elgin - Baie Verte can plastic buoy  
6094.35 - Port Elgin - Baie Verte can plastic buoy  
6094.34 - Port Elgin - Baie Verte can plastic buoy  
6094.33 - Port Elgin - Baie Verte can plastic buoy  
6094.32 - Port Elgin - Baie Verte can plastic buoy

Monthly Notices to Mariners - Eastern Edition  
Edition 6/2015

SECTION 1  
CORRECTIONS TO SAFETY AND GENERAL INFORMATION

PLAS - 6094.20 - Port Elgin - Baie Verte conical plastic buoy – 46° 3' 6"N 64° 4' 6"W - Uncharted

XC2 - 6094.10 - Port Elgin Conical XC2 – 46° 2' 5.1"N 64° 2' 38.9"W – Chart 4406

Comments on this action are solicited from mariners and other interested parties.  
Comments should be directed to

Superintendent,  
Aids to Navigation,  
Canadian Coast Guard,  
PO Box 1236,  
Charlottetown, PEI, C1A 7M8  
Telephone: 902-566-7936  
Email: [claire.maclaren@dfo-mpo.gc.ca](mailto:claire.maclaren@dfo-mpo.gc.ca)

Any objections raised must state the facts on which they are based and should include supporting information on safety, commerce and public benefit.

(G2015-003)

\*613 ANNUAL EDITON NOTICES TO MARINERS 1 TO 46. UPDATE TO SECTION C.

Reference to Notice to Mariners 27A.  
GUIDELINES FOR THE TRANSIT OF WIDE BEAM VESSELS AND LONG VESSELS.

AMEND:

2) Directives concerning the meeting of vessels in medium- and high-risk areas (R)

R-1) Meetings are prohibited in high-risk areas. The high-risk areas between Québec and Montréal for vessels with a combined nominal breadth of between 65 and 72.6 metres and between 72.61 metres and 88 metres are identified on chart VN-301.

TO READ:

2) Directives concerning the meeting of vessels in medium- and high-risk areas (R)

*Any time, wide beam vessels have to favor day transit in the section Quebec-Montreal.*

R-1) Meetings are prohibited in high-risk areas. The high-risk areas between Québec and Montréal for vessels with a combined nominal breadth of between 65 and 72.6 metres and between 72.61 metres and 88 metres are identified on chart VN-301.

---

AMEND:

3) Directives on overtaking in medium- and high-risk (D)

D-1) Overtaking is prohibited in high-risk areas. The high-risk areas between Québec and Montréal for vessels with a combined nominal breadth of between 65 metres and 72.6 metres and between 72.61 metres and 88 metres are identified on chart VN-301.

TO READ:

3) Directives on overtaking in medium- and high-risk (D)

*Any time, wide beam vessels will have to favor day transit in the section Quebec-Montreal.*

D-1) Overtaking is prohibited in high-risk areas. The high-risk areas between Québec and Montréal for vessels with a combined nominal breadth of between 65 metres and 72.6 metres and between 72.61 metres and 88 metres are identified on chart VN-301.

Fisheries and Oceans Canada - Official publication of the Canadian Coast Guard

Monthly Notices to Mariners – Eastern Edition  
Edition 6/2015

SECTION 2  
CHART CORRECTIONS

**1230 - Rivière-au-Renard - New Edition - 19-FEB-2010 - NAD 1983**

05-JUN-2015

LNMD. 09-JAN-2015

Delete depth of 0 metres 3 decimetres 48°59'55.8"N 064°23'28.4"W  
(See Chart No. 1, I10)  
This notice affects Electronic Navigational Chart: CA579167

*DFO(6409105-01)*

Add drying height of 0 metres 1 decimetre 48°59'56.0"N 064°23'28.7"W  
(See Chart No. 1, I15)  
This notice affects Electronic Navigational Chart: CA579167

*DFO(6409105-02)*

Add depth of 0 metres 2 decimetres 48°59'55.4"N 064°23'27.8"W  
(See Chart No. 1, I10)  
This notice affects Electronic Navigational Chart: CA579167

*DFO(6409105-03)*

Delete depth of 0 metres 8 decimetres 48°59'54.4"N 064°23'28.0"W  
(See Chart No. 1, I10)  
This notice affects Electronic Navigational Chart: CA579167

*DFO(6409105-04)*

Add depth of 0 metres 6 decimetres 48°59'54.0"N 064°23'28.5"W  
(See Chart No. 1, I10)  
This notice affects Electronic Navigational Chart: CA579167

*DFO(6409105-05)*

Amend FI G 5s19M to read FI G 5s8m19M against light 48°59'52.4"N 064°22'59.9"W  
(See Chart No. 1, P16)  
This notice affects Electronic Navigational Chart: CA279044, CA579167

*(Q2015044) LL(1629) DFO(6409106-01)*

**1236 - Pointe des Monts aux/to Escoumins - New Edition - 26-OCT-2012 - NAD 1983**

12-JUN-2015

LNMD. 27-MAR-2015

Replace depth of 135 metres 49°20'08.0"N 067°13'36.9"W  
with depth of 128 metres  
(See Chart No. 1, I10)

*DFO(6409120-01)*

**1312 - Lac Saint-Pierre - New Edition - 24-MAY-2013 - NAD 1983**

12-JUN-2015

LNMD. 15-MAY-2015

Amend F G 28m15M 46°15'32.7"N 072°37'21.4"W  
to read F G 29m15M against light  
(See Chart No. 1, P16)  
This notice affects Electronic Navigational Chart: CA479129

*(Q2015045) LL(2118) DFO(6409107-01)*

Amend F G 8m15M 46°15'34.9"N 072°37'48.4"W  
to read F G 10m15M against light  
(See Chart No. 1, P16)  
This notice affects Electronic Navigational Chart: CA479129

*(Q2015046) LL(2117) DFO(6409108-01)*



Monthly Notices to Mariners – Eastern Edition  
Edition 6/2015

SECTION 2  
CHART CORRECTIONS

1313 - Batiscan au/to Lac Saint-Pierre - New Edition - 07-JUN-2013 - NAD 1983

12-JUN-2015

LNMD. 05-JUN-2015

Amend F G 28m15M 46°15'32.7"N 072°37'21.4"W  
to read F G 29m15M against light  
(See Chart No. 1, P16)  
This notice affects Electronic Navigational Chart: CA479129  
*(Q2015045) LL(2118) DFO(6409107-01)*

Amend F G 8m15M 46°15'34.9"N 072°37'48.4"W  
to read F G 10m15M against light  
(See Chart No. 1, P16)  
This notice affects Electronic Navigational Chart: CA479129  
*(Q2015046) LL(2117) DFO(6409108-01)*

05-JUN-2015

LNMD. 15-MAY-2015

Add depth of 8 metres 8 decimetres 46°22'56.2"N 072°25'46.7"W  
(See Chart No. 1, I10)  
This notice affects Electronic Navigational Chart: CA479014  
*DFO(6409121-01)*

Add depth of 4 metres 9 decimetres 46°26'17.2"N 072°19'59.6"W  
(See Chart No. 1, I10)  
This notice affects Electronic Navigational Chart: CA479014  
*DFO(6409121-02)*

Add depth of 6 metres 4 decimetres 46°26'29.0"N 072°17'12.1"W  
(See Chart No. 1, I10)  
This notice affects Electronic Navigational Chart: CA479014  
*DFO(6409121-03)*

1313 - Port de Trois-Rivières - New Edition - 07-JUN-2013 - NAD 1983

05-JUN-2015

LNMD. 15-MAY-2015

Delete depth of 7 metres 6 decimetres 46°20'45.5"N 072°31'47.6"W  
(See Chart No. 1, I10)  
This notice affects Electronic Navigational Chart: CA579015  
*DFO(6409039-01)*

Add depth of 7 metres 2 decimetres 46°20'45.8"N 072°31'47.1"W  
(See Chart No. 1, I10)  
This notice affects Electronic Navigational Chart: CA579015  
*DFO(6409039-02)*

Delete depth of 7 metres 4 decimetres 46°20'43.1"N 072°31'51.2"W  
(See Chart No. 1, I10)  
This notice affects Electronic Navigational Chart: CA579015  
*DFO(6409039-03)*

Add depth of 6 metres 9 decimetres 46°20'43.1"N 072°31'51.5"W  
(See Chart No. 1, I10)  
This notice affects Electronic Navigational Chart: CA579015  
*DFO(6409039-04)*

Delete depth of 8 metres 8 decimetres 46°20'41.3"N 072°31'54.2"W  
(See Chart No. 1, I10)  
This notice affects Electronic Navigational Chart: CA579015  
*DFO(6409039-05)*

**Monthly Notices to Mariners – Eastern Edition  
Edition 6/2015**

**SECTION 2  
CHART CORRECTIONS**

Add	depth of 8 metres 4 decimetres (See Chart No. 1, I10) This notice affects Electronic Navigational Chart: CA579015	46°20'41.3"N 072°31'53.3"W  <i>DFO(6409039-06)</i>
Delete	depth of 9 metres 3 decimetres (See Chart No. 1, I10) This notice affects Electronic Navigational Chart: CA579015	46°20'35.8"N 072°32'02.6"W  <i>DFO(6409039-07)</i>
Add	depth of 9 metres 0 decimetres (See Chart No. 1, I10) This notice affects Electronic Navigational Chart: CA579015	46°20'35.8"N 072°32'03.2"W  <i>DFO(6409039-08)</i>
Amend	10,4m (2013) to read 10,1m (2014) (See Chart No. 1, I22) This notice affects Electronic Navigational Chart: CA579015	46°20'03.0"N 072°32'33.3"W  <i>DFO(6409039-09)</i>
<b>1320 - Port de Gros-Cacouna - New Chart - 26-AUG-2011 - NAD 1983</b> 26-JUN-2015		LNMD. 16-JAN-2015
Affix	patch Download Patch - <a href="http://www.chs-shc.gc.ca/patches/pa1320-20150527.pdf">http://www.chs-shc.gc.ca/patches/pa1320-20150527.pdf</a> This notice affects Electronic Navigational Chart: CA579234	47°55'50.0"N 069°30'58.0"W  <i>DFO(6409127-01)</i>
<b>1509 - Rapides du Cheval Blanc - Sheet/Feuille 1 - New Edition - 19-APR-2013 - NAD 1983</b> 05-JUN-2015		LNMD. 20-MAR-2015
Amend	45°27'36.00"N to read 45°30'36.00"N (See Chart No. 1, A10)	left side of south border  <i>DFO(6409023-01)</i>
<b>1514 - Carillon à/to L'Original - Sheet/Feuille 1 - New Chart - 24-JUL-1998 - NAD 1983</b> 19-JUN-2015		LNMD. 06-MAR-2015
Delete	depth of 1 metre 5 decimetres (See Chart No. 1, I10)	45°37'03.4"N 074°37'16.8"W  <i>DFO(6409124-04)</i>
Add	obstruction with known depth of 0 metres 1 decimetre (See Chart No. 1, K41)	45°37'03.4"N 074°37'15.6"W  <i>DFO(6409124-05)</i>
<b>1514 - L'Original à/to Papineauville - Sheet/Feuille 2 - New Chart - 24-JUL-1998 - NAD 1983</b> 19-JUN-2015		LNMD. 06-MAR-2015
Add	Stump (See Chart No. 1, K43.2)	45°37'59.2"N 074°42'58.8"W  <i>DFO(6409124-01)</i>
Delete	depth of 5 metres 5 decimetres (See Chart No. 1, I10)	45°38'32.3"N 074°52'12.8"W  <i>DFO(6409124-02)</i>

Monthly Notices to Mariners – Eastern Edition  
Edition 6/2015

SECTION 2  
CHART CORRECTIONS

Add obstruction with known depth of 1 metre 0 decimetres 45°38'32.4"N 074°52'11.2"W  
(See Chart No. 1, K41)  
*DFO(6409124-03)*

**2029 - Big Chute to/à Port Severn - Sheet/Feuille 2 - New Edition - 21-DEC-2012 - NAD 1983**

05-JUN-2015 LNM/D. 29-NOV-2013

Replace green port hand spar buoy, marked C9/3 44°47'57.2"N 079°43'23.8"W  
with green port hand spar buoy, marked C9  
(See Chart No. 1, QG)

*(D2015001) LL(8047.9) DFO(6604096-02)*

**2058 - Cobourg to/à Oshawa - New Edition - 25-FEB-2000 - NAD 1983**

19-JUN-2015 LNM/D. 19-SEP-2014

Delete obstruction, depth unknown, "Rep (2013)" 43°54'57.0"N 078°17'57.0"W  
(See Chart No. 1, K40, I3.2)  
This notice affects Electronic Navigational Chart: CA373064

*DFO(6604102-01)*

Add wreck, least depth unknown, dangerous to surface navigation 43°54'58.3"N 078°17'55.6"W  
(See Chart No. 1, K28)  
This notice affects Electronic Navigational Chart: CA373064

*DFO(6604102-03)*

**2120 - Port Dover - New Edition - 15-APR-2005 - NAD 1983**

19-JUN-2015 LNM/D. 24-OCT-2014

Add depth of 1.5 metres 42°46'50.3"N 080°11'44.5"W  
(See Chart No. 1, I10)  
This notice affects Electronic Navigational Chart: CA573303

*DFO(6604103-03)*

**2202 - Port Severn to/à Tomahawk Island - Sheet/Feuille 1 - New Edition - 05-JAN-2007 - NAD 1983**

05-JUN-2015 LNM/D. 27-SEP-2013

Replace green port hand spar buoy, marked C9/3 44°47'57.2"N 079°43'23.8"W  
with green port hand spar buoy, marked C9  
(See Chart No. 1, QG)

*(D2015001) LL(8047.9) DFO(6604096-02)*

**2228 - Lake Huron/Lac Huron (Southern Portion/Partie sud) - New Chart - 16-FEB-1990 - NAD 1983**

12-JUN-2015 LNM/D. 16-JAN-2015

Amend chart 2228 or L/C 2228 located outside of the chart border in the South West and North East corners.  
to read 2228-1

*DFO(6604101-01)*

Amend "See Inset on back" 43°43'36.0"N 081°41'48.0"W  
to read "See Inset/voir cartouche on/sur 2228-2"

*DFO(6604101-02)*

**2243 - Bateau Island to/à Byng Inlet - New Edition - 30-AUG-1985 - NAD 1927**

12-JUN-2015 LNM/D. 07-JUN-2013

Delete depth of 7 feet (See Chart No. 1, I10) 45°19'52.8"N 080°22'53.0"W  
This notice affects Electronic Navigational Chart: CA373311

*DFO(6604100-01)*

Monthly Notices to Mariners – Eastern Edition  
Edition 6/2015

SECTION 2  
CHART CORRECTIONS

Add depth of 2 feet 45°19'54.5"N 080°22'52.0"W  
(See Chart No. 1, I10)  
This notice affects Electronic Navigational Chart: CA373311  
*DFO(6604100-03)*

**4000 - Gulf of Maine to/à Baffin Bay / Baie de Baffin - New Edition - 25-JUL-2003 - NAD 1983**  
19-JUN-2015 LNMD. 29-MAY-2015

Add subsurface Ocean Data Acquisition system 51°50'06.0"N 052°30'24.0"W  
(ODAS) with known depth of 60 metres  
(See Chart No. 1, L25)  
This notice affects Electronic Navigational Chart: CA176030  
*DFO(6307140-01)*

Add subsurface Ocean Data Acquisition system (ODAS) 50°16'42.0"N 051°50'42.0"W  
with known depth of 45 metres (See Chart No. 1, L25)  
This notice affects Electronic Navigational Chart: CA176030  
*DFO(6307140-02)*

Add subsurface Ocean Data Acquisition system (ODAS) 48°59'24.0"N 051°02'06.0"W  
with known depth of 56 metres (See Chart No. 1, L25)  
This notice affects Electronic Navigational Chart: CA176030, CA276092  
*DFO(6307140-03)*

**4001 - Gulf of Maine to Strait of Belle Isle /au Detroit de Belle Isle –  
New Edition - 01-DEC-1995 - NAD 1983**  
19-JUN-2015 LNMD. 29-MAY-2015

Add subsurface Ocean Data Acquisition system (ODAS) 51°50'06.0"N 052°30'24.0"W  
with known depth of 60 metres  
(See Chart No. 1, L25)  
This notice affects Electronic Navigational Chart: CA176030  
*DFO(6307140-01)*

Add subsurface Ocean Data Acquisition system (ODAS) 50°16'42.0"N 051°50'42.0"W  
with known depth of 45 metres  
(See Chart No. 1, L25)  
This notice affects Electronic Navigational Chart: CA176030  
*DFO(6307140-02)*

Add subsurface Ocean Data Acquisition system (ODAS) 48°59'24.0"N 051°02'06.0"W  
with known depth of 56 metres  
(See Chart No. 1, L25)  
This notice affects Electronic Navigational Chart: CA176030, CA276092  
*DFO(6307140-03)*

**4006 - Newfoundland and Labrador/Terre-Neuve-et-Labrador to Bermuda / aux Bermudes –  
New Edition - 08-AUG-2003 - NAD 1983**  
19-JUN-2015 LNMD. 29-MAY-2015

Add subsurface Ocean Data Acquisition system (ODAS) with known depth of 60 metres 51°50'06.0"N 052°30'24.0"W  
(See Chart No. 1, L25)  
This notice affects Electronic Navigational Chart: CA176030  
*DFO(6307140-01)*

Monthly Notices to Mariners – Eastern Edition  
Edition 6/2015

SECTION 2  
CHART CORRECTIONS

**4012 - Yarmouth to/à Halifax - New Edition - 14-FEB-2003 - NAD 1983**

05-JUN-2015

LNMD. 29-MAY-2015

Amend FogSig to read FogSig (Occas) 43°26'59.0"N 065°28'15.0"W  
(See Chart No. 1, R20)  
This notice affects Electronic Navigational Chart: CA276800, CA376047  
(F2015014) LL(336) DFO(6307115-01)

**4017 - Cape Race to/à Cape Freels - New Edition - 07-MAR-2003 - NAD 1983**

19-JUN-2015

LNMD. 16-JAN-2015

Add subsurface Ocean Data Acquisition system (ODAS) 48°59'24.0"N 051°02'06.0"W  
with known depth of 31 fathoms  
(See Chart No. 1, L25)  
This notice affects Electronic Navigational Chart: CA176030, CA276092  
DFO(6307140-03)

**4023 - Northumberland Strait / Déroit de Northumberland - New Edition - 27-DEC-2002 - NAD 1983**

19-JUN-2015

LNMD. 07-NOV-2014

Amend FIG 46°24'20.5"N 064°08'05.9"W  
to read QG against light  
(See Chart No. 1, P16)  
This notice affects Electronic Navigational Chart: CA276286, CA376076  
(G2015038) LL(1025.5) DFO(6307141-01)

**4025 - Cap Whittle à/to Havre-Saint-Pierre et/and Île d'Anticosti - New Edition - 28-MAR-2014 - NAD 1983**

12-JUN-2015

LNMD. 09-JAN-2015

Delete depth of 121 metres 49°19'43.6"N 063°35'36.0"W  
(See Chart No. 1, I10)  
DFO(6409120-02)  
Add depth of 91 metres 49°20'05.9"N 063°36'14.4"W  
(See Chart No. 1, I10)  
DFO(6409120-03)

**4026 - Havre Saint-Pierre et/and Cap des Rosiers à/to Pointe des Monts - New Edition - 23-MAY-2014 - NAD 1983**

05-JUN-2015

LNMD. 27-MAR-2015

Amend FI G 5s19M 48°59'52.4"N 064°22'59.9"W  
to read FI G 5s8m19M against light  
(See Chart No. 1, P16)  
This notice affects Electronic Navigational Chart: CA279044, CA579167  
(Q2015044) LL(1629) DFO(6409106-01)

**4117 - Saint John Harbour and Approaches / et les approches - New Edition - 29-MAY-2009 - NAD 1983**

05-JUN-2015

LNMD. 15-MAY-2015

Delete light F 45°16'06.5"N 066°04'28.8"W  
(See Chart No. 1, P1)  
This notice affects Electronic Navigational Chart: CA576005  
DFO(6307125-01)

Delete light F 45°16'12.0"N 066°04'29.8"W  
(See Chart No. 1, P1)  
This notice affects Electronic Navigational Chart: CA576005  
DFO(6307125-02)

**Monthly Notices to Mariners – Eastern Edition  
Edition 6/2015**

**SECTION 2  
CHART CORRECTIONS**

Add	light FG (See Chart No. 1, P1) This notice affects Electronic Navigational Chart: CA576005	45°16'07.6"N 066°04'28.7"W  <i>DFO(6307125-03)</i>
Add	light FG (See Chart No. 1, P1) This notice affects Electronic Navigational Chart: CA576005	45°16'07.5"N 066°04'29.7"W  <i>DFO(6307125-04)</i>
Add	light FR (See Chart No. 1, P1) This notice affects Electronic Navigational Chart: CA576005	45°16'10.6"N 066°04'29.2"W  <i>DFO(6307125-05)</i>
Add	light FR (See Chart No. 1, P1) This notice affects Electronic Navigational Chart: CA576005	45°16'10.5"N 066°04'30.2"W  <i>DFO(6307125-06)</i>
<b>4230 - Little Hope Island to/à Cape St Marys - New Chart - 15-JUN-1990 - NAD 1983</b>		
	05-JUN-2015	LNMD. 27-MAR-2015
Amend	FogSig 20s to read FogSig 20s (Occas) (See Chart No. 1, R20) This notice affects Electronic Navigational Chart: CA276800, CA376047	43°26'59.0"N 065°28'15.0"W  <i>(F2015014) LL(336) DFO(6307115-01)</i>
<b>4235 - Sheet Harbour - New Edition - 28-APR-2000 - NAD 1983</b>		
	19-JUN-2015	LNMD. 15-NOV-2013
Add	light FIR against red starboard hand spar buoy, marked XU18 (See Chart No. 1, Q7) This notice affects Electronic Navigational Chart: CA476103	44°54'36.5"N 062°31'09.0"W  <i>(F2015015) LL(596.04) DFO(6307146-01)</i>
<b>4237 - Approaches to/Approches au Halifax Harbour – New Edition - 02-JUN-2000 - NAD 1983</b>		
	26-JUN-2015	LNMD. 19-JUN-2015
Add	light FIR against red starboard hand spar buoy, marked HE10 (See Chart No. 1, Q7) This notice affects Electronic Navigational Chart: CA476009, CA576010	44°26'51.2"N 063°34'51.1"W  <i>(F2015017) LL(503.05) DFO(6307148-01)</i>
	19-JUN-2015	LNMD. 22-MAY-2015
Delete	green port hand spar buoy, marked HE7 (See Chart No. 1, Qg) This notice affects Electronic Navigational Chart: CA476009	44°26'10.5"N 063°36'03.0"W  <i>(F2015016) DFO(6307147-01)</i>
Add	green port hand lighted spar buoy FIG, marked HE7 (See Chart No. 1, Q7) This notice affects Electronic Navigational Chart: CA476009	44°26'14.5"N 063°35'52.8"W  <i>(F2015016) LL(503.03) DFO(6307147-02)</i>

Monthly Notices to Mariners – Eastern Edition  
Edition 6/2015

SECTION 2  
CHART CORRECTIONS

**4237 - Sambro Harbour - New Edition - 02-JUN-2000 - NAD 1983**

26-JUN-2015

LNMD. 19-JUN-2015

Add light FIR against red starboard hand spar buoy, marked HE10 44°26'51.2"N 063°34'50.6"W  
(See Chart No. 1, Q7)  
This notice affects Electronic Navigational Chart: CA476009, CA576010  
(F2015017) LL(503.05) DFO(6307148-01)

**4241 - Lockeport to/à Cape Sable - New Edition - 08-NOV-2002 - NAD 1983**

05-JUN-2015

LNMD. 06-FEB-2015

Amend FogSig 20s 43°26'59.0"N 065°28'15.0"W  
to read FogSig 20s (Occas)  
(See Chart No. 1, R20)  
This notice affects Electronic Navigational Chart: CA276800, CA376047  
(F2015014) LL(336) DFO(6307115-01)

**4242 - Cape Sable Island to/aux Tusket Islands - New Edition - 28-AUG-1992 - NAD 1983**

05-JUN-2015

LNMD. 18-OCT-2013

Amend FogSig 20s 43°26'59.0"N 065°28'15.0"W  
to read FogSig 20s (Occas)  
(See Chart No. 1, R20)  
This notice affects Electronic Navigational Chart: CA276800, CA376047  
(F2015014) LL(336) DFO(6307115-01)

**4277 - Great Bras D'Or, St. Andrews Channel and/et St. Anns Bay - New Edition - 17-APR-1998 - NAD 1983**

26-JUN-2015

LNMD. 20-FEB-2015

Add subsurface Ocean Data Acquisition system ODAS/SADO 46°12'50.1"N 060°21'17.4"W  
with known depth of 14 metres, 8 decimetres  
(See Chart No. 1, L25)  
This notice affects Electronic Navigational Chart: CA476063  
DFO(6307151-01)

Add subsurface Ocean Data Acquisition system ODAS/SADO 46°13'12.7"N 060°21'10.6"W  
with known depth of 17 metres, 6 decimetres.  
(See Chart No. 1, L25)  
This notice affects Electronic Navigational Chart: CA476063  
DFO(6307151-02)

Add subsurface Ocean Data Acquisition system ODAS/SADO 46°13'34.5"N 060°22'39.8"W  
with known depth of 1 metre, 6 decimetres.  
(See Chart No. 1, L25)  
This notice affects Electronic Navigational Chart: CA476063  
DFO(6307151-03)

**4279 - Bras D'Or Lake - New Edition - 28-AUG-1998 - NAD 1983**

26-JUN-2015

LNMD. 03-APR-2015

Add causeway joining 45°37'40.3"N 061°02'22.2"W  
(See Chart No. 1, F3) 45°37'43.0"N 061°02'14.7"W  
This notice affects Electronic Navigational Chart: CA376272, CA476273 45°37'44.2"N 061°02'16.8"W  
45°37'42.2"N 061°02'22.3"W  
and 45°37'40.3"N 061°02'22.2"W  
DFO(6307150-01)

Monthly Notices to Mariners – Eastern Edition  
Edition 6/2015

SECTION 2  
CHART CORRECTIONS

**4279 - Lennox Passage - New Edition - 28-AUG-1998 - NAD 1983**

26-JUN-2015

LNMD. 03-APR-2015

Add causeway joining 45°37'40.3"N 061°02'21.8"W  
(See Chart No. 1, F3) 45°37'42.8"N 061°02'15.2"W  
This notice affects Electronic Navigational Chart: CA376272, CA476273 45°37'44.1"N 061°02'16.4"W  
45°37'42.2"N 061°02'21.9"W  
and 45°37'40.3"N 061°02'21.8"W  
*DFO(6307150-01)*

**4308 - St. Peters Bay to/à Strait of Canso – New Edition - 21-MAR-2003 - NAD 1983**

26-JUN-2015

LNMD. 24-APR-2015

Add causeway joining 45°37'40.5"N 061°02'21.6"W  
(See Chart No. 1, F3) 45°37'43.0"N 061°02'14.7"W  
This notice affects Electronic Navigational Chart: CA376272, CA476273 45°37'44.2"N 061°02'16.8"W  
45°37'42.3"N 061°02'21.9"W  
and 45°37'40.5"N 061°02'21.6"W  
*DFO(6307150-01)*

**4335 - Strait of Canso and Approaches/et les approches – New Edition - 04-JAN-2008 - NAD 1983**

26-JUN-2015

LNMD. 24-APR-2015

Add causeway joining 45°37'40.8"N 061°02'20.8"W  
(See Chart No. 1, F3) 45°37'43.4"N 061°02'13.8"W  
This notice affects Electronic Navigational Chart: CA376272, CA476273 45°37'45.0"N 061°02'14.6"W  
45°37'42.5"N 061°02'21.7"W  
and 45°37'40.8"N 061°02'20.8"W  
*DFO(6307150-01)*

**4377 - Main-à-Dieu Passage - New Edition - 06-NOV-1998 - NAD 1983**

12-JUN-2015

LNMD. 16-JAN-2015

Add breakwater extension between 46°00'17.7"N 059°50'27.2"W  
(See Chart No. 1, F4.1) and 46°00'17.3"N 059°50'25.4"W  
*DFO(6307135-01)*

Reposition light FIG from 46°00'17.7"N 059°50'27.2"W  
(See Chart No. 1, P1) to 46°00'17.3"N 059°50'25.4"W  
*(G2015035) LL(765.3) DFO(6307135-02)*

**4385 - Chebucto Head to/à Betty Island - New Edition - 07-JUN-1996 - NAD 1983**

26-JUN-2015

LNMD. 19-JUN-2015

Add light FIR against red starboard hand spar buoy, marked HE10 44°26'50.8"N 063°34'50.9"W  
(See Chart No. 1, Q7)  
This notice affects Electronic Navigational Chart: CA476009, CA576010  
*(F2015017) LL(503.05) DFO(6307148-01)*

19-JUN-2015

LNMD. 22-MAY-2015

Delete green port hand spar buoy, marked HE7 44°26'10.1"N 063°36'02.4"W  
(See Chart No. 1, Qg)  
This notice affects Electronic Navigational Chart: CA476009  
*(F2015016) DFO(6307147-01)*

Add green port hand lighted spar buoy FIG, marked HE7 44°26'14.5"N 063°35'52.8"W  
(See Chart No. 1, Q7)  
This notice affects Electronic Navigational Chart: CA476009  
*(F2015016) LL(503.03) DFO(6307147-02)*



Monthly Notices to Mariners – Eastern Edition  
Edition 6/2015

SECTION 2  
CHART CORRECTIONS

**4406 - Tryon Shoals to à Cape Egmont - New Edition - 27-FEB-1998 - NAD 1983**

19-JUN-2015

LNMD. 24-APR-2015

Amend FIG to read QG against light  
(See Chart No. 1, P16)  
This notice affects Electronic Navigational Chart: CA276286, CA376076  
*(G2015038) LL(1025.5) DFO(6307141-01)*

46°24'26.1"N 064°08'06.7"W

**4429 - Havre Saint-Pierre - New Edition - 18-FEB-2011 - NAD 1983**

26-JUN-2015

LNMD. 27-MAR-2015

Replace ON CERTAIN COPIES  
depth of 18 metres  
with depth of 18 metres 1 decimetre  
(See Chart No. 1, I10)  
*DFO(6409128-01)*

50°14'09.1"N 063°36'44.5"W

**4432 - Havre de Mingan - New Edition - 11-MAR-2011 - NAD 1983**

05-JUN-2015

LNMD. 20-JUN-2014

Delete pier  
(See Chart No. 1, F14)  
This notice affects Electronic Navigational Chart: CA479027  
*DFO(6409112-01)*

joining 50°17'20.1"N 064°01'21.5"W  
50°17'17.7"N 064°01'20.0"W  
50°17'17.4"N 064°01'21.3"W  
50°17'17.7"N 064°01'21.5"W  
50°17'17.9"N 064°01'20.7"W  
and 50°17'20.0"N 064°01'21.9"W

Delete pier  
(See Chart No. 1, F14)  
This notice affects Electronic Navigational Chart: CA479027  
*DFO(6409112-02)*

joining 50°17'22.0"N 064°01'14.7"W  
50°17'20.8"N 064°01'14.1"W  
50°17'20.9"N 064°01'13.7"W  
and 50°17'20.6"N 064°01'14.8"W

Add pier  
(See Chart No. 1, F14)  
This notice affects Electronic Navigational Chart: CA479027  
*DFO(6409112-03)*

joining 50°17'19.1"N 064°01'16.8"W  
50°17'20.3"N 064°01'13.4"W  
and 50°17'22.3"N 064°01'15.1"W

**4440 - Îles Sainte-Marie à/to Île à la Brume - New Edition - 19-JUL-2013 - NAD 1983**

19-JUN-2015

Add underwater rock of unknown depth, dangerous to surface navigation  
(See Chart No. 1, K13)  
This notice affects Electronic Navigational Chart: CA379164  
*DFO(6409099-01)*

50°14'48.0"N 059°55'45.4"W

Add underwater rock of unknown depth, dangerous to surface navigation  
(See Chart No. 1, K13)  
This notice affects Electronic Navigational Chart: CA379164  
*DFO(6409099-02)*

50°14'48.5"N 059°55'21.1"W

Add underwater rock of unknown depth, dangerous to surface navigation  
(See Chart No. 1, K13)  
This notice affects Electronic Navigational Chart: CA379164  
*DFO(6409099-03)*

50°15'41.1"N 059°52'39.0"W

Monthly Notices to Mariners – Eastern Edition  
Edition 6/2015

SECTION 2  
CHART CORRECTIONS

Add underwater rock of unknown depth, dangerous to surface navigation 50°15'53.6"N 059°53'01.8"W  
(See Chart No. 1, K13)  
This notice affects Electronic Navigational Chart: CA379164  
*DFO(6409099-04)*

Add underwater rock of unknown depth, dangerous to surface navigation 50°15'17.8"N 059°55'34.9"W  
(See Chart No. 1, K13)  
This notice affects Electronic Navigational Chart: CA379164  
*DFO(6409099-05)*

Delete depth of 2 metres 7 decimetres 50°17'03.7"N 059°52'46.8"W  
(See Chart No. 1, I10)  
This notice affects Electronic Navigational Chart: CA379164  
*DFO(6409099-06)*

Add underwater rock of unknown depth, dangerous to surface navigation 50°17'04.6"N 059°52'46.8"W  
(See Chart No. 1, K13)  
This notice affects Electronic Navigational Chart: CA379164  
*DFO(6409099-07)*

**4530 - Hamilton Sound, Eastern Portion / Partie est - New Edition - 15-MAR-2002 - NAD 1983**  
26-JUN-2015 LNM/D. 16-JAN-2015

Add breakwater extension between 49°27'32.7"N 053°57'22.6"W  
(See Chart No. 1, F4.1) and 49°27'32.2"N 053°57'24.9"W  
This notice affects Electronic Navigational Chart: CA476279  
*DFO(6307149-01)*

**4617 - Long Harbour, Erco Wharf - New Edition - 30-APR-2010 - NAD 1983**  
19-JUN-2015 LNM/D. 06-MAR-2015

Add outfall pipe joining 47°25'17.7"N 053°48'59.0"W  
(See Chart No. 1, L41.1) 47°25'15.2"N 053°49'13.2"W  
This notice affects Electronic Navigational Chart: CA476300, CA576301 47°25'13.2"N 053°49'22.3"W  
47°25'10.2"N 053°49'35.9"W  
47°25'06.9"N 053°49'49.4"W  
and 47°25'05.9"N 053°49'54.7"W  
*DFO(6307142-01)*

**4617 - Red Island to/à Pinchgut Point - New Edition - 30-APR-2010 - NAD 1983**  
19-JUN-2015 LNM/D. 06-MAR-2015

Add outfall pipe joining 47°25'17.7"N 053°48'59.4"W  
(See Chart No. 1, L41.1) 47°25'15.2"N 053°49'13.2"W  
This notice affects Electronic Navigational Chart: CA476300, CA576301 47°25'10.2"N 053°49'35.9"W  
47°25'06.9"N 053°49'49.4"W  
47°25'03.4"N 053°50'07.8"W  
47°24'59.3"N 053°50'30.5"W  
47°24'59.4"N 053°51'03.7"W  
47°24'56.5"N 053°51'22.3"W  
47°24'55.6"N 053°51'31.7"W  
47°24'51.2"N 053°51'59.6"W  
47°24'50.0"N 053°52'13.8"W  
and 47°24'49.9"N 053°52'54.6"W  
*DFO(6307142-01)*

Monthly Notices to Mariners – Eastern Edition  
Edition 6/2015

SECTION 2  
CHART CORRECTIONS

**4825 - Burgeo and/et Ramea Islands - New Chart - 01-MAR-2002 - NAD 1983**

12-JUN-2015

LNMD. 08-AUG-2014

Delete depth of 10 metres, 1 decimetre  
(See Chart No. 1, I10)

47°34'20.5"N 057°42'03.6"W

*DFO(6307139-01)*

Add depth of 3 metres, 3 decimetres  
(See Chart No. 1, I10)

47°34'18.5"N 057°42'02.5"W

*DFO(6307139-02)*

**4855 - Bonavista Bay, Southern Portion/Partie sud - New Chart - 06-JUN-1997 - NAD 1983**

26-JUN-2015

LNMD. 28-FEB-2014

Reposition ON CERTAIN COPIES  
light FIG  
(See Chart No. 1, P1)  
This notice affects Electronic Navigational Chart: CA376808

from 48°43'04.6"N 053°46'59.4"W  
to 48°43'04.9"N 053°47'02.1"W

*LL(439.37) DFO(6307155-01)*

Delete bottom quality R  
(See Chart No. 1, J9.1)  
This notice affects Electronic Navigational Chart: CA376808

48°43'48.9"N 053°58'19.8"W

*DFO(6307158-01)*

Add underwater rock of unknown depth, dangerous to surface navigation, with  
legend PA  
(See Chart No. 1, K13)  
This notice affects Electronic Navigational Chart: CA376808

48°43'45.0"N 053°58'21.0"W

*DFO(6307158-02)*

**4858 - Greenspond Harbour to/à Pound Cove - New Chart - 25-DEC-1998 - NAD 1983**

05-JUN-2015

LNMD. 16-JAN-2015

Affix patch  
Download Patch - [http://www.chs-shc.gc.ca/patches/4858PA\\_20150504.pdf](http://www.chs-shc.gc.ca/patches/4858PA_20150504.pdf)  
This notice affects Electronic Navigational Chart: CA576373

49°08'00.0"N 053°36'00.0"W

*DFO(6307138-02)*

**4858 - Valleyfield - New Chart - 25-DEC-1998 - NAD 1983**

05-JUN-2015

LNMD. 16-JAN-2015

Affix patch  
Download Patch - [http://www.chs-shc.gc.ca/patches/4858\\_20150430.pdf](http://www.chs-shc.gc.ca/patches/4858_20150430.pdf)  
This notice affects Electronic Navigational Chart: CA576374

49°07'12.0"N 053°36'30.0"W

*DFO(6307138-01)*

**4905 - Cape Tormentine à/to West Point - New Edition - 29-DEC-2000 - NAD 1983**

19-JUN-2015

LNMD. 24-APR-2015

Amend FIG to read QG against light  
(See Chart No. 1, P16)  
This notice affects Electronic Navigational Chart: CA276286, CA376076

46°24'24.0"N 064°08'05.3"W

*(G2015038) LL(1025.5) DFO(6307141-01)*

Monthly Notices to Mariners – Eastern Edition  
Edition 6/2015

SECTION 2  
CHART CORRECTIONS

**4911 - Entrée à/Entrance to Miramichi River - New Edition - 27-JAN-2006 - NAD 1983**  
12-JUN-2015

LNMD. 15-MAY-2015

Delete front range/leading light Iso Y 1s 11m 47°04'01.0"N 064°56'31.5"W  
(See Chart No. 1, P20.2)  
This notice affects Electronic Navigational Chart: CA476133  
*(G2015030) LL(1173.15) DFO(6307131-01)*

Delete rear range/leading light Iso Y 4s 27m, 47°03'00.8"N 064°55'48.3"W  
with leading line and bearings 153½° - 333½°  
(See Chart No. 1, P20.2)  
This notice affects Electronic Navigational Chart: CA476133  
*(G2015031) LL(1173.16) DFO(6307131-02)*

**4921 - Quai / Wharf Port-Daniel-Est - New Edition - 16-MAR-2012 - NAD 1983**  
26-JUN-2015

LNMD. 29-MAY-2015

Amend vertical clearance of 2 metres 3 decimetres, 48°11'00.6"N 064°57'50.0"W  
to read 2 metres 0 decimetres  
(See Chart No. 1, D22)  
This notice affects Electronic Navigational Chart: CA579069  
*DFO(6409129-01)*

Amend vertical clearance of 7 metres 6 decimetres, 48°10'59.0"N 064°57'49.2"W  
to read 7 metres 3 decimetres  
(See Chart No. 1, D22)  
This notice affects Electronic Navigational Chart: CA579069  
*DFO(6409129-02)*

**5001 - Labrador Sea/ Mer du Labrador - New Edition - 17-JAN-2003 - NAD 1983**  
19-JUN-2015

LNMD. 22-MAY-2015

Add subsurface Ocean Data Acquisition system (ODAS) 51°50'06.0"N 052°30'24.0"W  
with known depth of 60 metres  
(See Chart No. 1, L25)  
This notice affects Electronic Navigational Chart: CA176030  
*DFO(6307140-01)*

**7083 - Cambridge Bay to/à Shepherd Bay - New Edition - 15-JUN-1984 - Unknown**  
26-JUN-2015

LNMD. 27-MAR-2015

Amend note Chart 7733 68°26'00.0"N 096°52'00.0"W  
to read Chart 7736  
(See Chart No. 1, A20)  
*DFO(6604105-01)*

**7121 - Cape Mills to/à Cape Rammelsberg - New Edition - 16-MAY-2003 - NAD 1983**  
12-JUN-2015

Delete depth of 48 fathoms 63°17'56.3"N 067°40'26.7"W  
(See Chart No. 1, I10)  
*DFO(6604099-01)*

Add depth of 17 fathoms 63°18'03.3"N 067°40'31.0"W  
(See Chart No. 1, I10)  
*DFO(6604099-02)*

**Monthly Notices to Mariners – Eastern Edition  
Edition 6/2015**

**SECTION 2  
CHART CORRECTIONS**

Delete	depth of 24 fathoms (See Chart No. 1, I10)	63°19'58.6"N 067°43'42.3"W  <i>DFO(6604099-03)</i>
Add	depth of 15 fathoms (See Chart No. 1, I10)	63°20'00.0"N 067°43'34.4"W  <i>DFO(6604099-04)</i>
Add	depth of 14 fathoms (See Chart No. 1, I10)	63°20'16.3"N 067°43'46.2"W  <i>DFO(6604099-05)</i>
<b>7122 - Culbertson Island to/à Koojesse Inlet - New Edition - 08-JUL-2005 - NAD 1983</b>		
	12-JUN-2015	LNMD. 23-NOV-2012
Add	depth of 14 fathoms (See Chart No. 1, I10)	63°20'16.3"N 067°43'46.2"W  <i>DFO(6604099-05)</i>
<b>7736 - Simpson Strait - New Chart - 31-DEC-2004 - NAD 1983</b>		
	19-JUN-2015	LNMD. 09-NOV-2012
Delete	depth of 8.9 metres (See Chart No. 1, I10) This notice affects Electronic Navigational Chart: CA473317	68°32'17.0"N 097°26'10.0"W  <i>DFO(6604104-01)</i>
Add	depth of 8.7 metres (See Chart No. 1, I10) This notice affects Electronic Navigational Chart: CA473317	68°32'17.0"N 097°26'11.0"W  <i>DFO(6604104-02)</i>
<b>8006 - Scotian Shelf/Plate-Forme Néo-Écossaise, Browns Bank to Emerald Bank/Banc de Brown au Banc D'Émeraude - New Edition - 14-FEB-2003 - NAD 1983</b>		
	05-JUN-2015	LNMD. 08-NOV-2013
Amend	FogSig to read FogSig (Occas) (See Chart No. 1, R20) This notice affects Electronic Navigational Chart: CA276800, CA376047	43°26'59.0"N 065°28'15.0"W  <i>(F2015014) LL(336) DFO(6307115-01)</i>
<b>8014 - Grand Banc/Grand Bank (Northeast Portion/Partie-nord-est) - New Edition - 25-JUL-2003 - NAD 1983</b>		
	19-JUN-2015	LNMD. 11-OCT-2013
Add	subsurface Ocean Data Acquisition system (ODAS) with known depth of 31 fathoms (See Chart No. 1, L25) This notice affects Electronic Navigational Chart: CA176030, CA276092	48°59'24.0"N 051°02'06.0"W  <i>DFO(6307140-03)</i>
<b>8015 - Funk Island and Approaches/et les approches - New Edition - 16-NOV-2001 - NAD 1983</b>		
	19-JUN-2015	LNMD. 16-JAN-2015
Add	subsurface Ocean Data Acquisition system (ODAS) with known depth of 45 metres (See Chart No. 1, L25) This notice affects Electronic Navigational Chart: CA176030	50°16'42.0"N 051°50'42.0"W  <i>DFO(6307140-02)</i>

Monthly Notices to Mariners – Eastern Edition  
Edition 6/2015

SECTION 2  
CHART CORRECTIONS

8049 - St. Michael Bay to/aux Gray Islands - New Edition - 07-MAR-2003 - Unknown  
19-JUN-2015

LNMD. 22-MAY-2015

Add subsurface Ocean Data Acquisition system (ODAS)  
with known depth of 60 metres  
(See Chart No. 1, L25)  
This notice affects Electronic Navigational Chart: CA176030

51°50'06.0"N 052°30'24.0"W

*DFO(6307140-01)*

**Monthly Notices to Mariners - Eastern Edition**  
**Edition 6/2015**  
**SECTION 3**  
**CORRECTIONS TO RADIO AIDS TO MARINE NAVIGATION**

\*614 RADIO AIDS TO MARINE NAVIGATION 2015, (ATLANTIC, ST. LAWRENCE, GREAT LAKES, LAKE WINNIPEG AND ARCTIC)

**Part 1 – Page 6**

AMEND the following rows:

**Table 1-2 - Maritime Mobile Safety and Communication Frequencies VHF**

Frequencies		Channel	Class of Emission	Areas Used	Remarks
MHz (ship)	MHz (coast)				
156.550	156.550	11	F3E	b, c	Vessel Traffic Services & Pilotage. Continuously monitored – MCTS Port aux Basques, Sarnia, Placentia, Thunder Bay only.
156.600	156.600	12	F3E	b, c	VTS / Port Operations/Pilotage. Continuously monitored – MCTS Halifax, Placentia, Port aux Basques, Québec, Sarnia, Thunder Bay only.
156.700	156.700	14	F3E	b, c	VTS/Port Operations/Pilotage. Continuously monitored – MCTS Halifax, Les Escoumins, Placentia, Sarnia, St-Anthony, Sydney only.
156.950	161.550	19	F3E	a, b, c	Ship and Canadian Coast Guard liaison, MSI broadcasts. Continuously monitored – MCTS Thunder Bay only.
157.200	161.800	24	F3E	b, c	Public correspondence. Continuously monitored – MCTS Halifax (except Kingsburg, Fox Island) Labrador, Placentia, Port aux Basques, Prescott, Sarnia, St-Anthony, Thunder Bay only.
157.275	161.875	85	F3E	b, c, d	Public correspondence. Continuously monitored – MCTS Placentia, Prescott (except Gananoque), Sarnia, Thunder Bay only.
157.300	161.900	26	F3E	a, b, c, d, e	Public correspondence, MSI broadcasts. Continuously monitored – MCTS Halifax, Iqaluit, Labrador, Placentia, Port aux Basques, Prescott, , St-Anthony, Sydney, Thunder Bay only.
157.350	161.950	27	F3E	b, c	Public correspondence. Continuously monitored – MCTS Placentia, Port aux Basques, Prescott, Halifax, Sarnia and Thunder Bay only.
157.375	157.375	87	F3E	a, b, c	Port operations/Ship movement. Continuously monitored – MCTS Sarnia, Thunder Bay only.

**TO READ:**

Frequencies		Channel	Class of Emission	Areas Used	Remarks
MHz (ship)	MHz (coast)				
156.550	156.550	11	F3E	b, c	Vessel Traffic Services & Pilotage. Continuously monitored – MCTS Port aux Basques, Sarnia, Placentia only.
156.600	156.600	12	F3E	b, c	VTS / Port Operations/Pilotage. Continuously monitored – MCTS Halifax, Placentia, Port aux Basques, Québec, Sarnia, only.

**Monthly Notices to Mariners - Eastern Edition**

Edition 6/2015

**SECTION 3**

**CORRECTIONS TO RADIO AIDS TO MARINE NAVIGATION**

Frequencies		Channel	Class of Emission	Areas Used	Remarks
MHz (ship)	MHz (coast)				
156.700	156.700	14	F3E	b, c	VTS/Port Operations/Pilotage. Continuously monitored – MCTS Halifax, Les Escoumins, Placentia, St-Anthony, Sydney only.
156.950	161.550	19	F3E	a, b, c	Ship and Canadian Coast Guard liaison, MSI broadcasts. Continuously monitored – MCTS Sarnia only.
157.200	161.800	24	F3E	b, c	Public correspondence. Continuously monitored – MCTS Halifax (except Kingsburg, Fox Island) Labrador, Placentia, Port aux Basques, Prescott, Sarnia, St-Anthony only.
157.275	161.875	85	F3E	b, c, d	Public correspondence. Continuously monitored – MCTS Placentia, Prescott (except Gananoque), Sarnia only.
157.300	161.900	26	F3E	a, b, c, d, e	Public correspondence, MSI broadcasts. Continuously monitored – MCTS Halifax, Iqaluit, Labrador, Placentia, Port aux Basques, Prescott, Sarnia, St-Anthony, Sydney only.
157.350	161.950	27	F3E	b, c	Public correspondence. Continuously monitored – MCTS Placentia, Port aux Basques, Prescott, Halifax, Sarnia only.
157.375	157.375	87	F3E	a, b, c	Port operations/Ship movement.

**Part 1 – Page 8**

**REMOVE the following row:**

**Table 1-4 - Telephone / Facsimile / Telex Directory**

Service	Telephone Number	Facsimile Number	Telex Number	Answer Back Code	MMSI
Thunder Bay, ON (VBA)	807-345-5190	807-345-2688			003160031

**Part 2 – Page 1**

**AMEND:**

[SUPVRMCTS@MAR.DFO-MPO.GC.CA](mailto:SUPVRMCTS@MAR.DFO-MPO.GC.CA)

**TO READ:**

[Supervisor.mcts-halifax@dfo-mpo.gc.ca](mailto:Supervisor.mcts-halifax@dfo-mpo.gc.ca)

**Part 2- Page 23**

**AMEND:**

[PlaSafe1@innav.gc.ca](mailto:PlaSafe1@innav.gc.ca)

**TO READ:**

[Safety.Placentia@innav.gc.ca](mailto:Safety.Placentia@innav.gc.ca)



**Monthly Notices to Mariners - Eastern Edition**  
**Edition 6/2015**  
**SECTION 3**  
**CORRECTIONS TO RADIO AIDS TO MARINE NAVIGATION**

**Part 2- Page 24**

**AMEND:**

**Table 2-10 - MCTS Placentia / VCP - Broadcasts**

<b>Time UTC</b>	<b>Site</b>	<b>Frequency or Channel</b>	<b>Contents</b>
00:07	St-John's	2598J3E	Radiotelephony <ul style="list-style-type: none"> <li>• Technical marine synopsis, forecasts and wave height forecasts for marine areas 232, 233, 234, 235, 236, 237 and 238.</li> <li>• Ice Edge and Conditions East Newfoundland Coast south of Strait of Belle Isle and approaches.</li> </ul>
00:48	St. Lawrence	2598J3E	Radiotelephony <ul style="list-style-type: none"> <li>• Technical marine synopsis, forecasts and wave height forecasts for marine areas 231, 232, 233, 234, 235 and 236.</li> <li>• Weather and Wave height forecasts for marine area 213.</li> </ul>
02:20	St. John's	518F1B	NAVTEX: (O) <ul style="list-style-type: none"> <li>• Weather</li> </ul>
06:20	St. John's	518F1B	NAVTEX: (O) <ul style="list-style-type: none"> <li>• Weather (Notices to Shipping only in winter).</li> </ul>
07:37	St. Lawrence	2598J3E	Radiotelephony <ul style="list-style-type: none"> <li>• Technical marine synopsis and forecasts for marine areas: 231, 232, 233, 234, 235 and 236.</li> <li>• Weather forecasts for marine area 213.</li> <li>• Ice Edge and Conditions South Coast east of Penguin Island, East Coast to Cape Freels.</li> <li>• Notices to Fish Harvesters (when available).</li> </ul>
08:37	St. John's	2598J3E	Radiotelephony <ul style="list-style-type: none"> <li>• Technical marine synopsis and forecasts for marine areas 232, 233, 234, 235, 236, 237 and 238.</li> <li>• Ice Edge and Conditions East Newfoundland Coast south of Strait of Belle Isle and approaches.</li> <li>• Notices to Fish Harvesters (when available).</li> </ul>
10:20	St. John's	518F1B	NAVTEX: (O) <ul style="list-style-type: none"> <li>• Weather (Notices to Shipping only in summer).</li> </ul>
11:37	St. Lawrence	2598J3E	Radiotelephony <ul style="list-style-type: none"> <li>• Notices to Shipping Ramea Island to Cape Ballard.</li> <li>• Notices to Shipping revising the position of every reported offshore exploration and exploitation vessel.</li> </ul>
13:07	St. John's	2598J3E	Radiotelephony <ul style="list-style-type: none"> <li>• Notice to Shipping: Nearshore - Cape Pine to Twillingate. Offshore – North Atlantic to Cape Bauld.</li> <li>• Notices to Shipping revising the position of every reported offshore exploration and exploitation vessel.</li> </ul>

**Monthly Notices to Mariners - Eastern Edition  
Edition 6/2015  
SECTION 3**

**CORRECTIONS TO RADIO AIDS TO MARINE NAVIGATION**

<b>Time UTC</b>	<b>Site</b>	<b>Frequency or Channel</b>	<b>Contents</b>
14:20	St. John's	518F1B	NAVTEX: (O) <ul style="list-style-type: none"> <li>Weather.</li> </ul>
16:07	St. Lawrence	2598J3E	Radiotelephony <ul style="list-style-type: none"> <li>Technical marine synopsis forecasts and wave height forecasts for marine areas: 231, 232, 233, 234, 235 and 236.</li> <li>Weather and Wave height forecasts for marine area 213.</li> </ul>
16:37	St. John's	2598J3E	Radiotelephony <ul style="list-style-type: none"> <li>Technical marine synopsis, forecasts and wave height forecasts for marine areas 232, 233, 234, 235, 236, 237 and 238.</li> <li>Ice Edge and Conditions East Newfoundland Coast south of Strait of Belle Isle and approaches.</li> </ul>
18:07	St. Lawrence	2598J3E	Radiotelephony <ul style="list-style-type: none"> <li>Notices to Shipping Ramea Island to Cape Ballard.</li> <li>Notices to Shipping revising the position of every reported offshore exploration and exploitation vessel.</li> </ul>
18:20	St. John's	518F1B	NAVTEX: (O) <ul style="list-style-type: none"> <li>Weather and wave height forecasts (summer) Ice (winter).</li> </ul>
20:07	St. John's	2598J3E	Radiotelephony <ul style="list-style-type: none"> <li>Technical marine synopsis and forecasts for marine areas 232, 233, 234, 235, 236, 237 and 238.</li> <li>Ice Edge and Conditions East Newfoundland Coast south of Strait of Belle Isle and approaches.</li> </ul>
21:37	St. Lawrence	2598J3E	Radiotelephony <ul style="list-style-type: none"> <li>Technical marine synopsis and forecasts for marine areas: 231, 232, 233, 234, 235 and 236.</li> <li>Weather forecasts for marine area 213.</li> <li>Ice Edge and Conditions South Coast east of Penguin Island, East Coast to Cape Freels.</li> <li>Notices to Fish Harvesters (when available).</li> </ul>
22:07	St. John's	2598J3E	Radiotelephony <ul style="list-style-type: none"> <li>Notices to Shipping: Nearshore – Cape Pine to Twillingate. Offshore – North Atlantic to Cape Bauld.</li> <li>Notices to Shipping revising the position of every reported offshore exploration and exploitation vessel.</li> <li>Notices to Fish Harvesters (when available).</li> </ul>
22:20	St. John's	518F1B	NAVTEX (O) <ul style="list-style-type: none"> <li>Weather (winter) Notices to Shipping/Ice (summer).</li> </ul>

**Monthly Notices to Mariners - Eastern Edition  
Edition 6/2015  
SECTION 3**

**CORRECTIONS TO RADIO AIDS TO MARINE NAVIGATION**

<b>Time UTC</b>	<b>Site</b>	<b>Frequency or Channel</b>	<b>Contents</b>
Placentia North Continuous	St. John's Cape Bonavista	Ch21B	Radiotelephony <ul style="list-style-type: none"> <li>• Technical marine synopsis, forecasts and wave height forecasts for marine areas 232, 233, 234, 235, 236, 237 and 238.</li> <li>• Actual weather observations (when available) for the following sites: Pool's Island – Bonavista – Grates Cove – St. John's – Cape Race – Argentina</li> <li>• Ice Edge and Conditions East Newfoundland Coast south of Strait of Belle Isle and approaches.</li> <li>• Notices to Shipping Cape Pine to Twillingate.</li> <li>• Notices to Fish Harvesters (when available).</li> </ul>
	Victoria	Ch83B	
	Lumsden	Ch28B	
Placentia South Continuous	St. Lawrence Bay L'Argent	Ch21B	Radiotelephony <ul style="list-style-type: none"> <li>• Technical marine synopsis, forecasts and wave height forecasts for marine 231, 232, 233, 234, 235 and 236.</li> <li>• Weather and wave height forecasts for marine area 213.</li> <li>• Actual weather observations (when available) for the following sites: Cape Race – Argentina – St. Pierre – Marticot – Sagona – St. Lawrence.</li> <li>• Ice Edge and Conditions South Coast east of Penguin Island, East Coast to Cape Freels.</li> <li>• Notices to Shipping Ramea Island to Cape Ballard.</li> <li>• Notices to Shipping revising the position of every reported offshore exploration and exploitation vessel.</li> <li>• Notices to Fish Harvesters (when available).</li> <li>• Notices to Shipping Placentia Bay and Approaches, Ferryland Head to Cape St. Mary's on CH23B only.</li> </ul>

**TO READ:**

**Table 2-10 - MCTS Placentia / VCP - Broadcasts**

<b>Time UTC</b>	<b>Site</b>	<b>Frequency or Channel</b>	<b>Contents</b>
00:07	St-John's	2598J3E	Radiotelephony <ul style="list-style-type: none"> <li>• Technical marine synopsis, forecasts and wave height forecasts for marine areas 231, 232, 233, 234, 235, 236, 237 and 238.</li> <li>• Ice Edge and Conditions East Newfoundland Coast south of Strait of Belle Isle and approaches.</li> </ul>
00:48	St. Lawrence	2598J3E	Radiotelephony <ul style="list-style-type: none"> <li>• Technical marine synopsis, forecasts and wave height forecasts for marine areas 231, 232, 233, 234, 235, 236, 237 and 238.</li> <li>• Weather and Wave height forecasts for marine area 213.</li> </ul>
02:20	St. John's	518F1B	NAVTEX: (O) <ul style="list-style-type: none"> <li>• Weather</li> </ul>

**Monthly Notices to Mariners - Eastern Edition  
Edition 6/2015  
SECTION 3**

**CORRECTIONS TO RADIO AIDS TO MARINE NAVIGATION**

<b>Time UTC</b>	<b>Site</b>	<b>Frequency or Channel</b>	<b>Contents</b>
06:20	St. John's	518F1B	NAVTEX: (O) <ul style="list-style-type: none"> <li>Weather (Notices to Shipping only in winter).</li> </ul>
07:37	St. Lawrence	2598J3E	Radiotelephony <ul style="list-style-type: none"> <li>Technical marine synopsis and forecasts for marine areas: 231, 232, 233, 234, 235, 236, 237 and 238.</li> <li>Weather forecasts for marine area 213.</li> <li>Ice Edge and Conditions South Coast east of Penguin Island, East Coast to Cape Freels.</li> <li>Notices to Fish Harvesters (when available).</li> </ul>
08:37	St. John's	2598J3E	Radiotelephony <ul style="list-style-type: none"> <li>Technical marine synopsis and forecasts for marine areas 231, 232, 233, 234, 235, 236, 237 and 238.</li> <li>Ice Edge and Conditions East Newfoundland Coast south of Strait of Belle Isle and approaches.</li> <li>Notices to Fish Harvesters (when available).</li> </ul>
10:20	St. John's	518F1B	NAVTEX: (O) <ul style="list-style-type: none"> <li>Weather (Notices to Shipping only in summer).</li> </ul>
11:37	St. Lawrence	2598J3E	Radiotelephony <ul style="list-style-type: none"> <li>Notices to Shipping Ramea Island to Cape Ballard.</li> <li>Notices to Shipping revising the position of every reported offshore exploration and exploitation vessel.</li> </ul>
13:07	St. John's	2598J3E	Radiotelephony <ul style="list-style-type: none"> <li>Notice to Shipping: Nearshore - Cape Pine to Twillingate. Offshore – North Atlantic to Cape Bauld.</li> <li>Notices to Shipping revising the position of every reported offshore exploration and exploitation vessel.</li> </ul>
14:20	St. John's	518F1B	NAVTEX: (O) <ul style="list-style-type: none"> <li>Weather.</li> </ul>
16:07	St. Lawrence	2598J3E	Radiotelephony <ul style="list-style-type: none"> <li>Technical marine synopsis forecasts and wave height forecasts for marine areas: 231, 232, 233, 234, 235, 236, 237 and 238.</li> <li>Weather and Wave height forecasts for marine area 213.</li> </ul>
16:37	St. John's	2598J3E	Radiotelephony <ul style="list-style-type: none"> <li>Technical marine synopsis, forecasts and wave height forecasts for marine areas 231, 232, 233, 234, 235, 236, 237 and 238.</li> <li>Ice Edge and Conditions East Newfoundland Coast south of Strait of Belle Isle and approaches.</li> </ul>
18:07	St. Lawrence	2598J3E	Radiotelephony <ul style="list-style-type: none"> <li>Notices to Shipping Ramea Island to Cape Ballard.</li> <li>Notices to Shipping revising the position of every reported offshore exploration and exploitation vessel.</li> </ul>

**Monthly Notices to Mariners - Eastern Edition**  
**Edition 6/2015**  
**SECTION 3**

**CORRECTIONS TO RADIO AIDS TO MARINE NAVIGATION**

<b>Time UTC</b>	<b>Site</b>	<b>Frequency or Channel</b>	<b>Contents</b>
18:20	St. John's	518F1B	NAVTEX: (O) <ul style="list-style-type: none"> <li>Weather and wave height forecasts (summer) Ice (winter).</li> </ul>
20:07	St. John's	2598J3E	Radiotelephony <ul style="list-style-type: none"> <li>Technical marine synopsis and forecasts for marine areas <b>231, 232, 233, 234, 235, 236, 237 and 238.</b></li> <li>Ice Edge and Conditions East Newfoundland Coast south of Strait of Belle Isle and approaches.</li> </ul>
21:37	St. Lawrence	2598J3E	Radiotelephony <ul style="list-style-type: none"> <li>Technical marine synopsis and forecasts for marine areas: <b>231, 232, 233, 234, 235, 236, 237 and 238.</b></li> <li>Weather forecasts for marine area 213.</li> <li>Ice Edge and Conditions South Coast east of Penguin Island, East Coast to Cape Freels.</li> <li>Notices to Fish Harvesters (when available).</li> </ul>
22:07	St. John's	2598J3E	Radiotelephony <ul style="list-style-type: none"> <li>Notices to Shipping: Nearshore – Cape Pine to Twillingate. Offshore – North Atlantic to Cape Bauld.</li> <li>Notices to Shipping revising the position of every reported offshore exploration and exploitation vessel.</li> <li>Notices to Fish Harvesters (when available).</li> </ul>
22:20	St. John's	518F1B	NAVTEX (O) <ul style="list-style-type: none"> <li>Weather (winter) Notices to Shipping/Ice (summer).</li> </ul>
Placentia North Continuous	St. John's Cape Bonavista	Ch21B	Radiotelephony <ul style="list-style-type: none"> <li>Technical marine synopsis, forecasts and wave height forecasts for marine areas <b>231, 232, 233, 234, 235, 236, 237 and 238.</b></li> <li>Actual weather observations (when available) for the following sites: Pool's Island – Bonavista – Grates Cove – St. John's – Cape Race – Argentia</li> <li>Ice Edge and Conditions East Newfoundland Coast south of Strait of Belle Isle and approaches.</li> <li>Notices to Shipping Cape Pine to Twillingate.</li> <li>Notices to Fish Harvesters (when available).</li> </ul>
	Victoria	Ch83B	
	Lumsden	Ch28B	

**Monthly Notices to Mariners - Eastern Edition  
Edition 6/2015  
SECTION 3**

**CORRECTIONS TO RADIO AIDS TO MARINE NAVIGATION**

<b>Time UTC</b>	<b>Site</b>	<b>Frequency or Channel</b>	<b>Contents</b>
Placentia South Continuous	St. Lawrence Bay L'Argent	Ch21B	Radiotelephony <ul style="list-style-type: none"> <li>• Technical marine synopsis, forecasts and wave height forecasts for marine areas 231, 232, 233, 234, 235, 236, 237 and 238.</li> <li>• Weather and wave height forecasts for marine area 213.</li> <li>• Actual weather observations (when available) for the following sites: Cape Race – Argentia – St. Pierre – Marticot – Sagona – St. Lawrence.</li> <li>• Ice Edge and Conditions South Coast east of Penguin Island, East Coast to Cape Freels.</li> <li>• Notices to Shipping Ramea Island to Cape Ballard.</li> <li>• Notices to Shipping revising the position of every reported offshore exploration and exploitation vessel.</li> <li>• Notices to Fish Harvesters (when available).</li> <li>• Notices to Shipping Placentia Bay and Approaches, Ferryland Head to Cape St. Mary's on CH23B only.</li> </ul>
	Freshwater	Ch23B	
	Hermitage	Ch28B	
	Cape Pine Fortune Head	Ch83B	

Monthly Notices to Mariners - Eastern Edition  
Edition 6/2015  
SECTION 3  
CORRECTIONS TO RADIO AIDS TO MARINE NAVIGATION

Part 2 - Page 45

[COMPLETELY REMOVE 2.1.10, Sarnia, Ontario \(Pages 45 to 46\)](#) and  
[COMPLETELY REMOVE 2.1.13, Thunder Bay, Ontario \(Pages 55 to 57\)](#).

REPLACE with:

### 2.1.10 Sarnia, Ontario

MMSI: 003160030 Call Sign: VBE

HOURS: H24

*Services in English only.*

For Radio Services call Sarnia Coast Guard Radio.

For Vessel Traffic Services call Sarnia Traffic – refer to Part 3.

#### Coordinates

Mailing Address:

Fisheries and Oceans Canada  
Canadian Coast Guard  
Officer-in-Charge - MCTS Operations  
Sarnia MCTS Centre  
P.O. Box 2778  
Sarnia ON N7T 7W1

Telephone: 519-336-4003 MCTS Operations  
519-337-6572 Officer-in-Charge

Facsimile: 519-336-0229

#### Sarnia MCTS Centre VHF Direction Finding Advisory Service:

A VHF/DF advisory service is available for vessels in difficulty in Georgian Bay within range of receiver sites located at Tobermory, Cape Croker, Banks and Pointe au Baril. Position and/or bearing and distance information may be provided for use at the discretion of the recipient.

*Public correspondence services are no longer available.*

**Table 2-19 - MCTS Sarnia / VBE – Ship/Shore Communications**

Sites located at	Channel	Frequencies		Remarks
		Transmit	Receive	
Sarnia 43°01'41"N 082°11'09"W	Ch11 Ch16 Ch24 Ch70 Ch85			
Kincardine 44°07'01"N 081°41'24"W	Ch11 Ch16 Ch27 Ch70 Ch85			

**Monthly Notices to Mariners - Eastern Edition**

Edition 6/2015

**SECTION 3**

**CORRECTIONS TO RADIO AIDS TO MARINE NAVIGATION**

Sites located at	Channel	Frequencies		Remarks
		Transmit	Receive	
Leamington 42°04'10"N 082°39'58"W	Ch12 Ch16 Ch27 Ch70 Ch85			
Port Burwell 42°34'58"N 080°36'13"W	Ch12 Ch16 Ch24 Ch70 Ch85			
Grande Pointe 42°23'26"N 082°24'17"W	Ch11 Ch12 Ch16 Ch70 Ch85			
Rondeau 42°25'22"N 081°50'40"W	Ch12 Ch16 Ch70 Ch85			
Thunder Bay 48°26'02"N 089°18'06"W	Ch16 Ch70 Ch85			
Horn 48°49'06"N 087°21'12"W	Ch16 Ch24 Ch70			
Bald Head 47°39'37"N 084°47'39"W	Ch16 Ch27 Ch70			
Sault Ste. Marie (Gros Cap) 46°32'16"N 084°34'54"W	Ch11 Ch16 Ch24 Ch70			
Silver Water (Manitoulin Island) 45°54'03"N 082°54'50"W	Ch11 Ch16 Ch27 Ch70			
Wiarion 44°44'50"N 081°06'44"W	Ch16 Ch26 Ch70			
Meaford 44°30'56"N 080°34'00"W	Ch16 Ch70 Ch85			
Tobermory 45°09'36"N 081°29'45"W	Ch16 Ch26 Ch70			VHF Direction Finding service is available.
Killarney 45°58'05"N 081°29'22"W	Ch16 Ch24 Ch70			
Pointe au Baril 45°33'53"N 080°19'02"W	Ch16 Ch26 Ch70			VHF Direction Finding service is available.

Fisheries and Oceans Canada - Official publication of the Canadian Coast Guard



**Monthly Notices to Mariners - Eastern Edition**  
**Edition 6/2015**  
**SECTION 3**  
**CORRECTIONS TO RADIO AIDS TO MARINE NAVIGATION**

**Table 2-20 - MCTS Sarnia/VBE - Ship/Shore Communications serving Lake Winnipeg**

Sites located at	Channel	Frequencies		Remarks
		Transmit	Receive	
Beaver Creek 51°23'21"N 096°54'25"W	Ch16 Ch26			Operational May 15 to October 31.
Fraserwood 50°34'47"N 097°13'56"W	Ch16 Ch19			Operational May 15 to October 31.
Jackhead 51°53'20"N 097°19'01"W	Ch16 Ch26			Operational May 15 to October 31.
Long Point 52°55'33"N 098°58'10"W	Ch16 Ch26			Operational May 15 to October 31.

**Table 2-21 - MCTS Sarnia / VBE - Broadcasts**

Time UTC	Site	Frequency or Channel	Contents
02:30	Thunder Bay	518F1B	NAVTEX: (P) • Weather.
06:30	Thunder Bay	518F1B	NAVTEX: (P) • Notices to Shipping. • Ice (during ice season).
10:30	Thunder Bay	518F1B	NAVTEX: (P) • Weather.
14:30	Thunder Bay	518F1B	NAVTEX: (P) • Weather.
18:30	Thunder Bay	518F1B	NAVTEX: (P) • Notices to Shipping. • Ice (during ice season).
22:30	Thunder Bay	518F1B	NAVTEX: (P) • Weather

**Monthly Notices to Mariners - Eastern Edition**  
**Edition 6/2015**  
**SECTION 3**

**CORRECTIONS TO RADIO AIDS TO MARINE NAVIGATION**

<b>Time UTC</b>	<b>Site</b>	<b>Frequency or Channel</b>	<b>Contents</b>
Continuous (CMB West)	Horn Sault Ste. Marie	Ch21B	Radiotelephony <ul style="list-style-type: none"> <li>Weather Warning/Watches, Marine Weather Statements, Technical Marine Synopsis, Regular Marine Forecasts, MAFOR code (available upon request), Extended Marine Forecast and Wave Height Forecast and for Lakes Superior, Huron, St Clair and Erie, and Georgian Bay.</li> <li>Notices for Shipping for Lake Superior and the St. Mary's River.</li> <li>Water levels for Lakes Superior and Huron.</li> </ul> Ice forecast for Lakes Superior and Huron.
	Thunder Bay Bald Head	Ch83B	
Continuous (CMB East)	Tobermory Killarney Pointe au Baril	Ch21B	Radiotelephony <ul style="list-style-type: none"> <li>Weather Warnings/Watches, Marine Weather Statements, Technical Marine Synopsis, Regular Marine Forecasts, MAFOR code (available upon request), Extended Marine Forecast and Wave Height Forecast and for Lakes Superior, Huron, St Clair and Erie, and Georgian Bay.</li> <li>Recreational boating forecast for the North Channel.</li> <li>Notices to Shipping for Lake Huron north of latitude 44 00N, Georgian Bay (including Port Severn Lock), the North Channel and the St. Mary's River.</li> <li>Water levels for Lakes Superior and Huron.</li> </ul> Ice forecast for Lakes Superior and Huron.
	Silver Water Meaford	Ch83B	
Continuous (CMB North)	Sarnia	Ch21B	Radiotelephony <ul style="list-style-type: none"> <li>Weather Warnings/Watches, Marine Weather Statements, Technical Marine Synopsis, Regular Marine Forecasts, MAFOR code (available upon request), Extended Marine Forecast and Wave Height Forecast and for Lakes Superior, Huron, St Clair and Erie, and Georgian Bay.</li> <li>Notices to Shipping Lake Huron South of 45 10N, St. Clair River, Lake St. Clair and Detroit River.</li> <li>Water levels for Lake Huron, Lake St. Clair and Lake Erie.</li> <li>Ice forecast for Lakes Erie, St. Clair and Huron.</li> </ul>
	Kincardine	Ch83B	
Continuous (CMB South)	Port Burwell	Ch21B	Radiotelephony <ul style="list-style-type: none"> <li>Weather Warnings/Watches, Marine Weather Statements, Technical Marine Synopsis, Regular Marine Forecasts, MAFOR code (available upon request), Extended Marine Forecast and Wave Height Forecast and for Lakes Superior, Huron, St Clair and Erie, and Georgian Bay.</li> <li>Notices to Shipping in St. Clair River, Lake St. Clair, Detroit River and Lake Erie West of 79 40W.</li> <li>Notices to Shipping revising the position of every reported offshore exploration and exploitation vessel.</li> <li>Water levels for Lake Huron, Lake St. Clair and Lake Erie.</li> <li>Ice forecast for Lakes Erie, St. Clair and Huron.</li> </ul>
	Leamington	Ch83B	

**Monthly Notices to Mariners - Eastern Edition**  
**Edition 6/2015**  
**SECTION 3**  
**CORRECTIONS TO RADIO AIDS TO MARINE NAVIGATION**

**Table 2-22 - MCTS Sarnia/VBE - Lake Winnipeg Broadcasts**

Time UTC	Site	Frequency or Channel	Contents
01:40 08:40 12:40 16:40 21:40	Jackhead Long Point Beaver Creek	Ch26	Radiotelephony <ul style="list-style-type: none"> <li>• Localized Weather Warnings/Watches, Marine Weather Statements, Technical Marine Synopsis, Regular Marine Forecasts, MAFOR code, Wave Height Forecast and Extended Marine Forecasts for Lake Winnipeg.</li> <li>• Notices to Shipping.</li> </ul>
	Fraserwood	Ch19	

Monthly Notices to Mariners - Eastern Edition  
Edition 6/2015  
SECTION 3  
CORRECTIONS TO RADIO AIDS TO MARINE NAVIGATION

**Part 2 – Page 59**

Table 2-30 – Great Lakes (includes St. Lawrence River to Montréal)

REMOVE last row:

Name Coordinates Call Sign	Class of Service	Channe l	Remarks
Thunder Bay, ON 48°25'12"N 089°11'31"W VBA		16 12	Commercial vessels entering the Port of Thunder Bay are requested to contact Thunder Bay MCTS Centre when abeam of Welcome Islands and also when shifting berths or departing the harbour.

**Part 2 Page Numbering**

AMEND:

Page numbering from St-Anthony's (now page 51) to the end of Part 2 (page 73).

**Part 3 – Page 45**

REMOVE the following paragraph:

**3.7.8.1 Sarnia Vessel Traffic Services Zone**

All vessels reporting in the area north of the Harbour Beach/Point Clark line will be answered by Thunder Bay Marine Communications and Traffic Services Centre on behalf of Sarnia Marine Communications and Traffic Services. The identifier "SARNIA TRAFFIC" may still be used.

**Part 3 – Page 46**

AMEND:

Table 3-25 – Calling-In-Points for Sarnia Zone and Areas

Numbe r	Secto r	Name	General Description and Conditions	Geographic Description
C	1	Cove Island	At Cove Island light for vessels enroute to or from Georgian Bay.	A line running 000° True from 45°19'37"N 081°44'07"W Call Thunder Bay Marine Communications and Traffic Services on Ch 26.

TO READ:

Numbe r	Secto r	Name	General Description and Conditions	Geographic Description
C	1	Cove Island	At Cove Island light for vessels enroute to or from Georgian Bay.	A line running 000° True from 45°19'37"N 081°44'07"W Call <b>Sarnia</b> Marine Communications and Traffic Services on Ch 26.

Monthly Notices to Mariners - Eastern Edition  
Edition 6/2015  
SECTION 3  
CORRECTIONS TO RADIO AIDS TO MARINE NAVIGATION

**Part 3 – Page 49**

**AMEND:**

**Table 3-26 - VHF Listening Watch Requirements**

	<b>Location</b>	<b>Monitor</b>	<b>Remarks</b>
L	Lake Huron Cut Light Buoy "11" to Detour Reef Light including Cove Island (Lake Huron and Georgian Bay)	Bridge Ch 13 and Ch 16	Thunder Bay and Sarnia Marine Communications and Traffic Services Centres operate on Ch 11 Lake Huron.

**TO READ:**

	<b>Location</b>	<b>Monitor</b>	<b>Remarks</b>
L	Lake Huron Cut Light Buoy "11" to Detour Reef Light including Cove Island (Lake Huron and Georgian Bay)	Bridge Ch 13 and Ch 16	Sarnia Marine Communications and Traffic Services Centre operates on Ch 11 Lake Huron.

Monthly Notices to Mariners - Eastern Edition  
Edition 6/2015  
SECTION 3  
CORRECTIONS TO RADIO AIDS TO MARINE NAVIGATION

Part 4 – Page 52

AMEND:

### 4.3.2 Canadian NAVTEX Service

Table 4-18– Transmitting sites where NAVTEX Service is available:

Controlled by	Site	Position	Range (NM)	ID 518 kHz (English)	ID 490 kHz (French)
St. John's MCTS	St. John's	47°36'N 52°40'W	300	O	
Labrador MCTS	Cartwright	53°42'N 57°01'W	300	X	
Sydney MCTS	Port Caledonia	46°11'N 59°54'W	300	Q	J
Saint John MCTS	Yarmouth	43°45'N 66°07'W	300	U	V
Rivière-au-Renard MCTS	Moisie	50°15'N 66°10'W	300	C	D
Thunder Bay MCTS	Pass Lake	48°34'N 88°39'W	300	P	
Prescott MCTS	Ferndale	44°56'N 81°14'W	300	H	
Iqaluit MCTS	Iqaluit	63°43'N 68°33'W	300	T	S

TO READ:

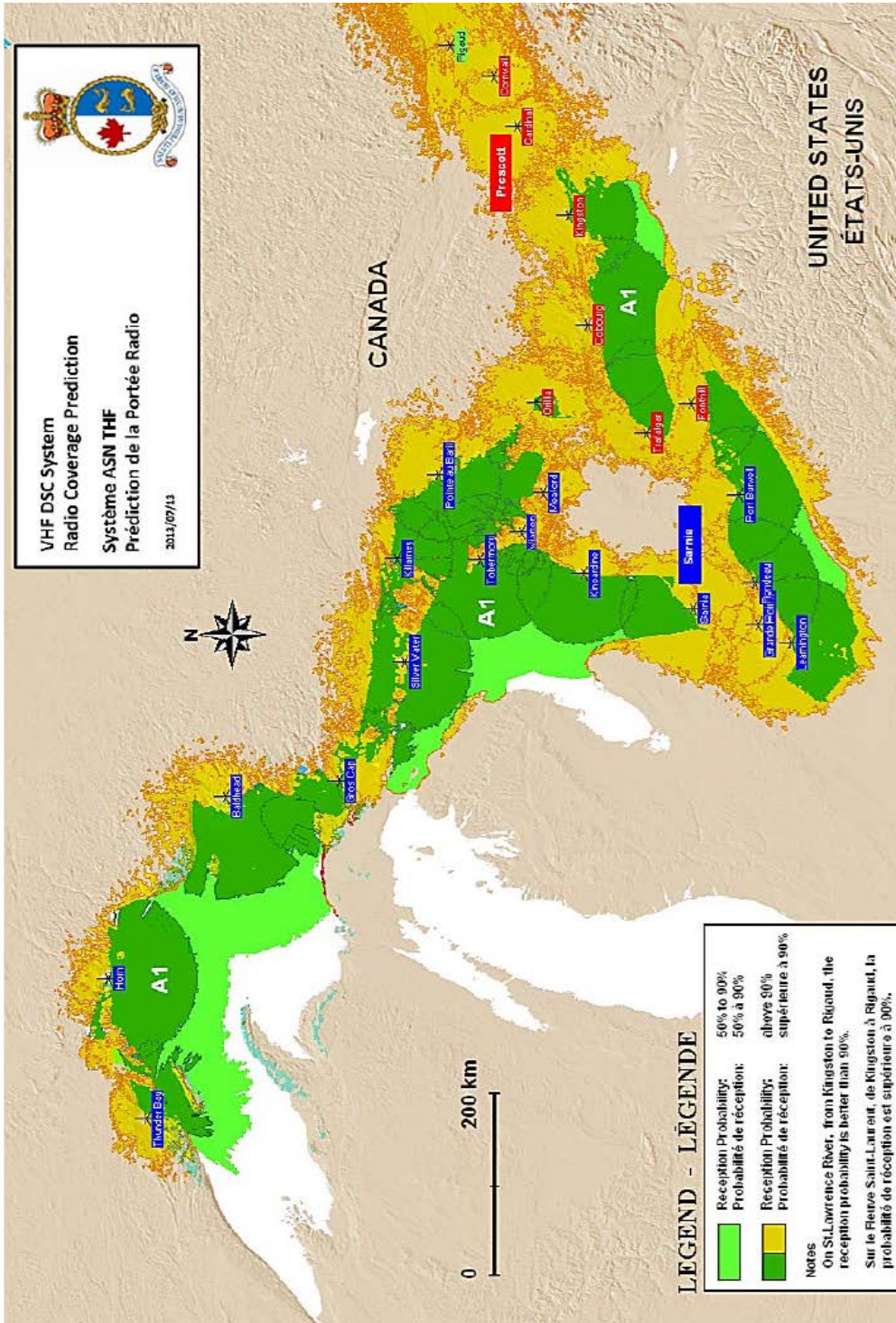
Controlled by	Site	Position	Range (NM)	ID 518 kHz (English)	ID 490 kHz (French)
St. John's MCTS	St. John's	47°36'N 52°40'W	300	O	
Labrador MCTS	Cartwright	53°42'N 57°01'W	300	X	
Sydney MCTS	Port Caledonia	46°11'N 59°54'W	300	Q	J
Saint John MCTS	Yarmouth	43°45'N 66°07'W	300	U	V
Rivière-au-Renard MCTS	Moisie	50°15'N 66°10'W	300	C	D
<b>Samia MCTS</b>	Pass Lake	48°34'N 88°39'W	300	P	
Prescott MCTS	Ferndale	44°56'N 81°14'W	300	H	
Iqaluit MCTS	Iqaluit	63°43'N 68°33'W	300	T	S

Monthly Notices to Mariners - Eastern Edition  
 Edition 6/2015  
 SECTION 3  
 CORRECTIONS TO RADIO AIDS TO MARINE NAVIGATION

Part 4 – Page 57

REMOVE:  
 FIGURE 4-14 – Radio Coverage Prediction – Great Lakes

REPLACE WITH:



Monthly Notices to Mariners - Eastern Edition  
Edition 6/2015  
SECTION 3  
CORRECTIONS TO RADIO AIDS TO MARINE NAVIGATION

**Part 5 – Page 30**

**REMOVE:**

**Table 5-38- Production Schedule - NAVTEX Format (refer to Part 2 for the MCTS broadcast schedule):**

MCTS Centres	Name	Header	Issue Time
St. John's VON	Navtex	FQCN33 CYQX	03:00, 06:00, 10:00, 15:30, 18:00, 20:00 NDT / NST
Labrador VOK	Navtex	FQCN35 CYQX	04:00, 06:00, 10:00, 16:00, 18:00,21:30 NDT / NST

**TO READ:**

MCTS Centres	Name	Header	Issue Time
Placentia VCP	Navtex	FQCN33 CYQX	03:00, 06:00, 10:00, 15:30, 18:00, 20:00 NDT / NST
Labrador VOK	Navtex	FQCN35 CYQX	04:00, 06:00, 10:00, 16:00, 18:00,21:30 NDT / NST

**Part 5 – Page 34**

**REMOVE:**

**Table 5-42 - Production Schedule - NAVTEX Format (refer to Part 2 for the MCTS broadcast schedule):**

MCTS Centres	Name	Header	Issue Time
Saint John VAR	NAVTEX	FQCN33 CWHX	03:00, 05:00, 10:00, 15:30, 17:00, 20:00 ADT / AST
Sydney VCO	NAVTEX/1	FQCN34 CWHX	03:00, 05:00, 10:00, 15:30, 17:00, 20:00 ADT / AST
	NAVTEX/2	FQCN34 CYQX	03:00, 06:00, 10:00, 15:30, 18:00, 20:00 NDT / NST

**TO READ:**

MCTS Centres	Name	Header	Issue Time
Halifax VCS	NAVTEX	FQCN33 CWHX	03:00, 05:00, 10:00, 15:30, 17:00, 20:00 ADT / AST
Sydney VCO	NAVTEX/1	FQCN34 CWHX	03:00, 05:00, 10:00, 15:30, 17:00, 20:00 ADT / AST
	NAVTEX/2	FQCN34 CYQX	03:00, 06:00, 10:00, 15:30, 18:00, 20:00 NDT / NST

**Part 5 – Page 43**

**AMEND:**

**Table 5-51- Production Schedule - NAVTEX Format (refer to Part 2 for the MCTS broadcast schedule):**

MCTS Centres	Name	Header	Issue Time
Prescott VBR	NAVTEX	FQCN38 CWTO	03:00, 10:30, 18:30 EDT/EST
Thunder Bay VBA	NAVTEX	FQCN39 CWTO	03:00, 10:30, 18:30 EDT/EST

**TO READ:**

MCTS Centres	Name	Header	Issue Time
Prescott VBR	NAVTEX	FQCN38 CWTO	03:00, 10:30, 18:30 EDT/EST
Samia VBE	NAVTEX	FQCN39 CWTO	03:00, 10:30, 18:30 EDT/EST



Monthly Notices to Mariners - Eastern Edition  
Edition 6/2015  
SECTION 3  
CORRECTIONS TO RADIO AIDS TO MARINE NAVIGATION

**Part 5 – Page 47**

**AMEND:**

**Table 5-57- Production Schedule - NAVTEX Format (refer to Part 2 for the MCTS broadcast schedule):**

<b>MCTS Centre</b>	<b>Name</b>	<b>Header</b>	<b>Issue Time</b>
St John's VON	Ice NAVTEX	FICN33 CWIS	17:50 (W), 21:50 (S) UTC
Sydney VCO	Ice NAVTEX	FICN34 CWIS	22:10 UTC
Labrador VOK	Ice NAVTEX	FICN35 CWIS	23:20 UTC
Iqaluit VFF	Ice NAVTEX	*FICN36 CWIS	07:00, 19:00 UTC
Prescott VBR	Ice NAVTEX	FICN38 CWIS	00:40, 12:40 UTC
Thunder Bay VBA	Ice NAVTEX	FICN39 CWIS	06:00, 18:00 UTC

**TO READ:**

<b>MCTS Centre</b>	<b>Name</b>	<b>Header</b>	<b>Issue Time</b>
<b>PlacentiaVCP</b>	Ice NAVTEX	FICN33 CWIS	17:50 (W), 21:50 (S) UTC
Sydney VCO	Ice NAVTEX	FICN34 CWIS	22:10 UTC
Labrador VOK	Ice NAVTEX	FICN35 CWIS	23:20 UTC
Iqaluit VFF	Ice NAVTEX	*FICN36 CWIS	07:00, 19:00 UTC
Prescott VBR	Ice NAVTEX	FICN38 CWIS	00:40, 12:40 UTC
<b>Sarnia VBE</b>	Ice NAVTEX	FICN39 CWIS	06:00, 18:00 UTC

**Monthly Notices to Mariners - Eastern Edition**  
**Edition 6/2015**  
**SECTION 3**  
**CORRECTIONS TO RADIO AIDS TO MARINE NAVIGATION**

**TABLE OF CONTENT**

**AMEND:**

Table of Content Page iii

**TO READ:**

**PART 2 FACILITIES INFORMATION .....1**

2.1	Marine Communications and Traffic Services Centre .....	1
2.1.1	Halifax, Nova Scotia .....	1
2.1.2	Iqaluit, Nunavut.....	7
2.1.3	Labrador (Goose Bay), Newfoundland and Labrador .....	17
2.1.4	Les Escoumins, Québec.....	21
2.1.5	Placentia, Newfoundland And Labrador.....	23
2.1.6	Port aux Basques, Newfoundland and Labrador .....	29
2.1.7	Prescott, Ontario.....	33
2.1.8	Québec, Québec .....	37
2.1.9	Rivière-au-Renard, Québec.....	41
2.1.10	Sarnia, Ontario .....	45
2.1.11	St. Anthony, Newfoundland and Labrador .....	51
2.1.12	Sydney, Nova Scotia .....	55
2.2	Canal And Lock Operations.....	59
2.3	Canal, Port And Lock Operations .....	59
2.4	Radio Beacon Stations Continuously in Operations .....	67
2.5	Radar Beacon (Racons).....	67
2.5.1	Atlantic Coast, Gulf and St. Lawrence River to Montréal, Eastern Arctic.....	67
2.5.2	Lake Winnipeg.....	72
2.5.3	Great Lakes (includes St. Lawrence River to Montréal) .....	72

Monthly Notices to Mariners - Eastern Edition  
Edition 6/2015

SECTION 4  
SAILING DIRECTIONS AND SMALL CRAFT GUIDE CORRECTIONS

ATL 101 — Newfoundland — Northeast and East Coasts, Second Edition, 2013 —

Chapter 1 — Paragraph 147

Delete: 11 feet (3.3 m)

Replace by: 13 feet (4 m)

(N2015-02.5)

Chapter 2 — Delete paragraph 93

Replace by: 93 An L-shaped Public **wharf** extends 135 feet (41 m) from the north shore of Westport Cove to an outer end 59 feet (18 m) long. The west face and outer end of this wharf is encased with stone. The east face, 115 feet (35 m) long, has depths of 7 to 10 feet (2 to 3 m) alongside its southern 66-foot (20-m) length. Fresh water is available. This wharf has a concrete deck.

(N2015-02.6)

Chapter 6 — Paragraph 166, last line

Add: An uncharted shoal is reported to lie approximately 1.1 miles WNW of Linton Rock in position  $48^{\circ}43.75'N$ ,  $53^{\circ}58.35'W$ ; **caution** is advised.

(N2015-02.7)

ATL 103 — Newfoundland — Southwest Coast, Second Edition, 2010 —

Chapter 4 — Paragraph 99

Delete: “A 3.7 m (12 ft) ... in 1993.”

Replace by: A 3.3 m (11 ft) shoal is charted close south of Graley Rock; **caution** is advised.

(N2015-02.8)

ATL 106 — Gulf of Maine and Bay of Fundy, First Edition, 2001 —

Chapter 4 — Paragraph 41

Delete: 23

Replace by: 21

(A2015-006.5)

Chapter 4 — Paragraph 41

Delete: “Fixed white **lights** ... both directions.”

Replace by: Fixed red and green **lights** are fitted to masts beneath the bridge deck, on each side of the channel, on both the upstream and downstream sides of the bridge.

(A2015-006.6)

ATL 107 — Saint John River, Second Edition, 2009 —

Chapter 2 — Paragraph 21

Delete: 22

Replace by: 21

(A2015-007.01)

Monthly Notices to Mariners - Eastern Edition  
Edition 6/2015

SECTION 4  
SAILING DIRECTIONS AND SMALL CRAFT GUIDE CORRECTIONS

Chapter 2 — Paragraph 21

Delete: “Fixed white **lights** ... both directions.”

Replace by: Fixed red and green **lights** are fitted to masts beneath the bridge deck, on each side of the channel, on both the upstream and downstream sides of the bridge.

(A2015-007.02)

ATL 108 — Gulf of St. Lawrence (Southwest Portion), First Edition, 2006 —

Chapter 3 — Delete paragraph 241

Replace by: <sup>241</sup> A **buoyed** channel leads through **Baie de Buctouche** to Buctouche Harbour, west of Dune de Buctouche. **Dixon Point** is on the south side of Buctouche Harbour, **Pointe à Jérôme** is on the north side. The inner channel is as narrow as 30 m; **caution** is advised. Attention must also be paid to the numerous aquaculture installations which line Buctouche Harbour.

(A2015-008.10)

Chapter 3 — Adjacent to paragraph 241, delete the light pictograph and replace it with a caution pictograph.

(A2015-008.11)

Chapter 4 — In the vicinity of paragraph 14, delete the **ESCUMINAC HARBOUR** diagram.

(A2015-008.12)

Chapter 4 — Delete paragraph 22.

(A2015-008.13)

ATL 109 — Gulf of St. Lawrence (Northeast Portion), First Edition, 2006 —

Chapter 2 — Paragraph 154

Delete: 512 feet (156 m)

Replace by: 148 m

(Q2014-072.1)

Chapter 2 — Paragraph 157

Delete: 17 feet (5.2 m)

Replace by: 5.2 m

(Q2014-072.2)

Chapter 2 — Paragraph 158

Delete: 8 feet (2.4 m)

Replace by: 2.4 m

(Q2014-072.3)

Chapter 2 — Paragraph 158, after “54 feet (16.5 m)”

Insert: (*Chart 4469*)

(Q2014-072.4)

Chapter 2 — Paragraph 159

Delete: 6 to 12 fathoms (11 to 22 m)

Replace by: 5 to 30 m

(Q2014-072.5)

Monthly Notices to Mariners - Eastern Edition  
Edition 6/2015

SECTION 4  
SAILING DIRECTIONS AND SMALL CRAFT GUIDE CORRECTIONS

- Chapter 2 — Paragraph 159  
Delete: 3 to 9 fathoms (5.5 to 16.5 m)  
Replace by: 5 to 10 m (Q2014-072.6)
- Chapter 2 — Paragraph 161  
Delete: 275 feet (84 m)  
Replace by: 79 m (Q2014-072.7)
- Chapter 2 — Paragraph 162  
Delete: 33 feet (10.1 m)  
Replace by: 9.9 m (Q2014-072.8)
- Chapter 2 — Delete paragraph 164  
Replace by: <sup>164</sup> **Havre de Harrington** is a small harbour, well sheltered with anchorage in 5 to 17.4 m over mud bottom which lies between Île Harrington and **Île de l'Entrée**. The north side of the harbour is bordered by submerged **rocks** and **shoals**. **Détroit de l'Entrée**, deep and narrow, is the main entrance channel into the harbour. (Q2014-072.9)
- Chapter 2 — Adjacent to paragraph 164, add a caution pictograph. (Q2014-072.9)
- Chapter 2 — Paragraph 167  
Delete: "The least observed ... 23 feet (7 m)."  
(Q2014-072.10)
- Chapter 2 — Paragraph 168  
Delete: 15 feet (4.6 m)  
Replace by: 4.7 m (Q2014-072.11)
- Chapter 2 — Delete paragraph 171  
Replace by: <sup>171</sup> There is a 183 m long **wharf** in the small cove in the bay, with a depth of 6.3 m at its outer end. The berths on both sides of the wharf are 54 m long; the north side has a depth of 2.7 m, while depths on the south side range from 2.9 to 6.9 m. A **ledge** of about 20 m long with a depth of 2.7 m extends from the north side of the wharf. (Q2014-072.12)
- Chapter 2 — Paragraph 174  
Delete: SSW  
Replace by: SSE (Q2014-072.13)

Monthly Notices to Mariners - Eastern Edition  
Edition 6/2015

SECTION 4  
SAILING DIRECTIONS AND SMALL CRAFT GUIDE CORRECTIONS

Chapter 2 — Paragraph 174 Delete: 7 feet (2.1 m) high and 150 feet (46 m) Replace by: 2 m and 170 m	(Q2014-072.14)
Chapter 2 — Paragraph 176 Delete: 600 feet (183 m) Replace by: 180 m	(Q2014-072.15)
Chapter 2 — Paragraph 177 Delete: 50 fathoms (91 m) Replace by: 100 m	(Q2014-072.16)
Chapter 2 — Paragraph 177 Delete: 5 to 10 fathoms (9.1 to 18.3 m) Replace by: 10 to 20 m	(Q2014-072.17)
Chapter 2 — Paragraph 178 Delete: 55 feet (17 m) Replace by: 17 m	(Q2014-072.18)
Chapter 2 — Paragraph 180 Delete: <b>buoyed channel</b> with a depth of 3 feet (0.9 m) Replace by: and shoal <b>buoyed channel</b>	(Q2014-072.19)
Chapter 2 — Paragraph 181 Delete: 50 feet (15 m) Replace by: 15 m	(Q2014-072.20)
Chapter 2 — Paragraph 183 Delete: 25 feet (7.6 m) Replace by: 8 m	(Q2014-072.21)
Chapter 2 — Paragraph 185 Delete: about 18 fathoms (33 m) Replace by: 5 to 20 m	(Q2014-072.22)
Chapter 2 — Paragraph 187 Delete: 33 feet (10.1 m) Replace by: 10.1 m	(Q2014-072.23)
Chapter 2 — Paragraph 187 Delete: 31 feet (9.4 m) Replace by: 9.4 m	(Q2014-072.24)

Monthly Notices to Mariners - Eastern Edition  
Edition 6/2015

SECTION 4  
SAILING DIRECTIONS AND SMALL CRAFT GUIDE CORRECTIONS

- Chapter 2 — Paragraph 188  
Delete: 20 fathoms (37 m)  
Replace by: 30 m  
(Q2014-072.25)
- Chapter 2 — Paragraph 188  
Delete: 4 feet (1.2 m)  
Replace by: 1.2 m  
(Q2014-072.26)
- Chapter 2 — Paragraph 189  
Delete: two **shoals** with less than 6 feet (1.8 m) of water over them, lies  
Replace by: **rocks** awash, lie  
(Q2014-072.27)
- Chapter 2 — Paragraph 190  
Delete: 4 feet (1.2 m)  
Replace by: 1.2 m  
(Q2014-072.28)
- Chapter 2 — Paragraph 190  
Delete: 23 feet (7 m)  
Replace by: 7 m  
(Q2014-072.29)
- Chapter 2 — Paragraph 191  
Delete: 8 feet (2.4 m)  
Replace by: 2.3 m  
(Q2014-072.30)
- Chapter 2 — Paragraph 192  
Delete: 11 fathoms (20 m)  
Replace by: 20 m  
(Q2014-072.31)
- Chapter 3 — Paragraph 29  
Delete: “89 feet (27 m) long ... 4 feet (1.2 m).”  
Replace by: 69 feet (21 m) long and 20 feet (6 m) wide, with an  
outer end 82 feet (25 m) long, is situated on the west  
side of the bay. There is a depth of 14 feet (4.2 m)  
alongside the outer end.  
(N2015-02.9)
- Chapter 3 — Paragraph 170  
Delete: 1 to 7 feet (0.4 to 2 m)  
Replace by: 5 to 7 feet (1.5 to 2 m)  
(N2015-03.0)

Monthly Notices to Mariners - Eastern Edition  
Edition 6/2015

SECTION 4  
SAILING DIRECTIONS AND SMALL CRAFT GUIDE CORRECTIONS

Chapter 4 — Paragraph 99

Delete: “These protect ... in 2013; caution is advised.”

Replace by: These breakwaters encased with stone protect an entrance 92 feet (28 m) wide that lead into a sheltered small craft basin. The channel leading into the basin has depths of 5 to 7 feet (1.5 to 2 m) in 2014; **caution** is advised. Inside the basin there is a Public **wharf** with a west face 177 feet (54 m) long with depths of 5 to 6 feet (1.4 to 1.8 m) alongside. The north face is 138 feet (42 m) long with depths of 4 to 5 feet (1.1 to 1.5 m) alongside.

(N2015-03.1)

ATL 111 — St. Lawrence River — Île Verte to Québec and Fjord du Saguenay, Third Edition, 2007 —

Chapter 3 — Paragraph 38

Delete: a depth alongside of 9.7 m

Replace by: depths alongside of 9.5 to 9.8 m

(Q2015-030.1)

ATL 112 — St. Lawrence River — Cap-Rouge to Montréal and Rivière Richelieu, Third Edition, 2009 —

Chapter 2 — Paragraph 167

Delete: \*48 m

Replace by: \*31 m

(Q2015-022.1)

APPENDICES — **Summary of air obstructions for this booklet** Table

Make the following change in the “Cable with ice” column.

Location	Cable with ice
Pointe-aux-Trembles	31 m

(Q2015-022.2)

ATL 120 — Labrador, Camp Islands to Hamilton Inlet (including Lake Melville), First Edition, 2004 —

Chapter 1 — Paragraph 54, last line

Add: Another wharf extends 62 m (203 ft) north from the previously described Ro-Ro ramp. There are depths of 4 to 4.5 m (13 to 15 ft) alongside its southern 55 m (180 ft) length. A slipway is located close north of this wharf.

(N2015-03.2)

CEN 302 — Lake Ontario, First Edition, 1996 —

Chapter 3 — After paragraph 77

Insert: <sup>77.1</sup> A **wreck**, least depth unknown, dangerous to surface navigation, is located 1.75 miles on a bearing of 205° from Port Hope West Pier light.

(C2015-008.01)



Monthly Notices to Mariners - Eastern Edition  
Edition 6/2015

SECTION 4  
SAILING DIRECTIONS AND SMALL CRAFT GUIDE CORRECTIONS

Chapter 3 — Adjacent to paragraph 77.1, add a caution pictograph.

(C2015-008.02)

CEN 303 — Welland Canal and Lake Erie, First Edition, 1996 —

Chapter 2 — Delete paragraph 132.2

Replace by: <sup>132.2</sup> *A state park and small-craft basin are on the east side of Buffalo Outer Harbor about 2.3 [2.0] miles southeast of the mouth of Buffalo River. The basin has a marina with 1,000 slips and launching ramps.*

(C2015-010.01)

CEN 304 — Detroit River, Lake St. Clair, St. Clair River, First Edition, 1996 —

Chapter 3 — Paragraph 16

Delete: *“A large dayboard ... Danger Submerged Jetty”*

Replace by: *A light, with a diamond-shaped white dayboard with orange border worded danger rocks,*

(C2015-009.01)

Monthly Notices to Mariners - Eastern Edition  
Edition 6/2015

SECTION 5  
LIST OF LIGHTS, BUOYS AND FOG SIGNALS CORRECTIONS

No.	Name	Position ----- Latitude N. Longitude W.	Light Characteristics	Focal Height t in m. above water	Nomi- nal Rang e	Description ----- Height in meters above ground	Remarks ----- Fog Signals
202 H3892	Digby Gut	E. side of entrance to Digby Gut. 44 41 17.4 065 45 35.1	LFI G 6s 20	.....	Square skeleton tower, three green and white daymarks facing 181°T, 212°T and 002°T.	Flash 2 s; eclipse. 4s  Chart:4396 Edn 05/15 (F15-011)	
336 H3782	Baccaro Point	E. side of entrance to Barrington Bay. 43 26 59 65 28 15	Mo(D) W 10s 15.0	15	White square tower, red upper portion. 14.0	Flash 5 s; eclipse 1 s; flash 1 s; eclipse 1 s; flash 1 s; eclipse 1 s. Visible from 207° through W., N. and E. to 127°. Operates at night only.  Horn: Blast 2 s; sil. 18 s. Horn points 200°.  Fog signal is VHF activated. Activated by keying the microphone 5 times on channel 65 within one nautical mile of the fog signal. It will be activated for a 15 min period and then will shut off automatically Chart:4241 Edn 06/15 (F15-014)	
503.03	Sambro light buoy HE7	44 26 14.5 063 35 52.8	Fl G 4s	.....	Green spar, marked "HE7".	Operates at night only. Chart: 4237 Edn 06/15(F15-016)	
503.05	Sambro light buoy HE10	44 26 51.0 063 34 50.5	Fl R 4s	.....	Red spar, marked "HE10".	Operates at night only. Chart: 4237 Edn 06/15 (F15-017)	
503.52	Sambro light buoy HE6	44 25 17.1 063 36 15.6	Fl R 4s	.....	Red spar marked "HE6".	Operates at night only. Chart:4237 Edn 06/15	
596.04	Mussel Shoal XU18	44 54 36.5 062 31 09.0	Fl R 4s	.....	Red spar, marked "XU18".	Operates at night only. Chart:4235 Edn 06/15 (F15-015)	
765.1 H745.6	Main-à-Dieu Harbour	46 00 13.7 059 50 22.2	Fl R 4s	6.2	4 Triangular skeleton tower, enclosed lower portion. 3.6	Operates at night only. Chart:4377 Edn 06/15 (G15-036)	
765.3 H745.4	Battery Point (Main-à-Dieu)	46 00 17.3 059 50 25.4	Fl G 4s	4	4 Cylindrical mast. 2.2	Operates at night only. Chart:4377 Edn 06/15 (G15-035)	
951 H0930	Launching Pond Breakwater	On outer end of N. breakwater. 46 13 13.3 062 24 32.6	Fl R 3s	5.4	4 Cylindrical mast. 3.7	Flash 1 s; eclipse 2 s. Privately maintained. Operates at night only. Seasonal. Chart:4421 Edn 06/15 (G15-037)	

Monthly Notices to Mariners - Eastern Edition  
Edition 6/2015

SECTION 5  
LIST OF LIGHTS, BUOYS AND FOG SIGNALS CORRECTIONS

No.	Name	Position ----- Latitude N. Longitude W.	Light Characteristics	Focal Height in m. above water	Nomi- nal Rang e	Description ----- Height in meters above ground	Remarks ----- Fog Signals
1025.5 H1057.5	Fishing Cove West Breakwater	On S. end of W. breakwater. 46 24 26.1 064 08 06.7	Q G 1s	3.2	4	Cylindrical mast. 2.8	Operates at night only. Seasonal.  Chart:4905 Edn 06/15(G15-038)
1173.15 H1442	Preston Beach – Range West						Delete from list.
1173.16 H1442.1							Chart:4911 Edn 06/15 (G15-030, 31)
2117 H2401	Traverse de Nicolet range	On shore at Port Saint-François. 46 15 34.9 72 37 48.4	F G .....	9.5	15	White cylindrical tower, orange daymark, black vertical stripe. 5	Visible in line of range. Emergency light.
2118 H2401.1		096°44' 583m from front.	F G .....	28.9	15	Square skeleton tower, orange daymark, black vertical stripe. 23.2	Visible in line of range. Emergency light. Chart:1312 Edn 06/15(G15-046-45)

Monthly Notices to Mariners - Eastern Edition  
Edition 6/2015

CANADIAN COAST GUARD MARINE INFORMATION REPORT AND SUGGESTION SHEET.

Name of Ship or Sender: ..... Date: .....

Address of Sender: .....  
Street # Street Name

Town / City: ..... Prov / State: ..... Postal Code / Zip Code: .....

Tel / Fax / E-mail address of sender: .....

Observation Date: ..... Time (UTC): .....

Geographical Position: .....

Coordinate Position: Lat: ..... Long: .....

Position Method:  DGPS  GPS with WAAS  GPS  Radar  Other

Horizontal Datum Used:  WGS 84  NAD 27  Other

Estimated Position Accuracy: .....

Chart #: ..... Datum:  NAD 27  NAD 83

Chart Edition: ..... Last Correction applied: .....

Publications affected: (Quote Volume and page): .....

\*Full details (Attach additional sheets as necessary) ... ..

Mariners are requested to notify the responsible authorities when new or suspected dangers to navigation are discovered, changes are observed in aids to navigation, or corrections to publications are seen to be necessary.

*In the case of new or suspected dangers to navigation, it is important that all details be given in order to aid with future investigations. Items of interest include heights, depths, physical description, type of bottom and equipment method used to position the item. It is helpful to mark details on chart, which will be promptly replaced by the Canadian Hydrographic Service.*

Reports should be made to the nearest Marine Communications and Traffic Services Centre (MCTS) and should be confirmed in writing to:

Leader, Notices to Mariners  
Canadian Coast Guard  
Department of Fisheries and Oceans  
Montréal, Qc H2Y 2E7

In the case of information concerning aids to navigation  
or the List of Lights, Buoys and Fog Signals.

[Notmar.XNCR@dfo-mpo.gc.ca](mailto:Notmar.XNCR@dfo-mpo.gc.ca)

OR

Director General, Canadian Hydrographic Service &  
Oceanographic Services  
Department of Fisheries and Oceans  
Ottawa, Ontario, K1A 0E6

In the case of new or suspected dangers to navigation  
or where corrections to "Sailing Directions" appear  
to be necessary.

[CHSINFO@dfo-mpo.gc.ca](mailto:CHSINFO@dfo-mpo.gc.ca)

Or general questions on Coast Guard programs or services please send an e-mail message to:  
[info@dfo-mpo.gc.ca](mailto:info@dfo-mpo.gc.ca)