



Fisheries and Oceans
Canada

Pêches et Océans
Canada

Canadian
Coast Guard

Garde côtière
canadienne

NOTICES TO MARINERS PUBLICATION WESTERN EDITION

MONTHLY EDITION N° 07
JULY 25th, 2014



Safety First, Service Always

Published monthly by the
CANADIAN COAST GUARD
www.notmar.gc.ca/subscribe

CONTENTS

	Page
Section 1	Safety and General Information 1 - 5
Section 2	Chart Corrections 6 - 9
Section 3	Radio Aids to Marine Navigation Corrections 10 - 17
Section 4	Sailing Directions and Small Craft Guide Corrections 18
Section 5	List of Lights, Buoys and Fog Signals Corrections 19 - 20

Canadian Coast Guard Programs
Aids to Navigation and Waterways

EXPLANATORY NOTES.

Geographical positions refer directly to the graduations of the largest scale Canadian Hydrographic chart unless otherwise indicated.

Bearings refer to the true compass and are measured clockwise from 000° (North) clockwise to 359°; those relating to lights are from seaward.

Visibility of lights is that in clear weather.

Depths - The units used for soundings (metres, fathoms or feet) are stated in the title of each chart.

Elevations are normally given above Higher High Water, Large Tides unless otherwise indicated.

Distances may be calculated as follows:

1 nautical mile	= 1 852 metres (6,076.1 feet)
1 statute mile	= 1 609.3 metres (5,280 feet)
1 metre	= 3.28 feet

Temporary & Preliminary Notices are indicated by a (T) or a (P) in the section 1. Please note that Nautical charts are not amended by the Canadian Hydrographic Service for Temporary (T) and Preliminary (P) Notices. It is recommended that mariners chart these corrections in pencil. Listing of charts affected by Temporary and Preliminary Notices are revised and promulgated quarterly in Section 1 of the Monthly Edition.

Please note that, in addition to the temporary and preliminary changes normally advertised as (T) and (P) Notices, there are a few permanent changes to navigational aids that have been advertised as Preliminary Notices to Mariners while charts are being updated for new editions.

Marine Information Report & Suggestion Sheet.

Mariners are requested to notify the responsible authorities when new or suspected dangers to navigation are discovered, changes observed in aids to navigation or corrections to publications are seen to be necessary. Such communications can be made using the *Marine Information Report & Suggestion Sheet* inserted on the last page of each monthly edition of *Notices to Mariners*.

Canadian Hydrographic Service.

Information Published in Section 2 Notices to Mariners - Mariners are advised that only the most critical changes that directly affect safety to navigation are issued in Chart Corrections - Section 2. This limitation is required to ensure that charts remain as clear and easy to read as possible. As a result, mariners may see minor discrepancies of a non-critical nature between information in official publications. For example, a small change in the nominal range or height of a light may not result in the production of a chart correction, in *Notices to Mariners*, but may result in a *List of Light, Buoys and Fog Signals* correction.

In case of discrepancy between information provided on CHS charts related to aids to navigation, and the List of Light publication, the latter shall be deemed as containing the most up to date information

Canadian Nautical Charts & Publications - A source list of *Canadian Nautical Charts & Publications* is published in Notice No. 14 of the *Notices to Mariners Annual Edition April 2012*. The source supply and the prices effective at the time of printing are listed. For current chart edition dates refer to the following website:

www.chs-shc.gc.ca/charts-cartes/paper-papier/index-eng.asp

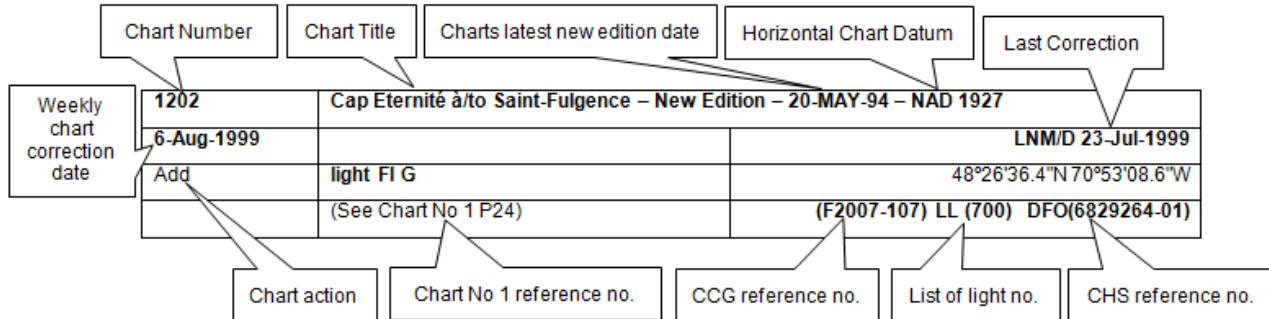
NOTE: Cette publication est aussi disponible en français.

CHART CORRECTIONS - SECTION 2.

Corrections to nautical charts will be listed in numeric order by chart number. Each chart correction listed applies only to that particular chart. Related charts, if any, will have their own specific correction listed separately.

Users should also refer to CHS Chart 1 Symbols, Abbreviations Terms for additional information pertaining to the correction of charts.

The illustration below describes the elements that will comprise a typical Section 2 chart correction.



The last correction number is identified with the **LNM/D** or **Last Notice to Mariners Number / Date**. This number is expressed in either old notice number format (ex.: 594/99) or in day-month-year format which is the date known as the weekly chart correction date shown in the above diagram as item (8).

MONTHLY EDITION OF NOTICES TO MARINERS

WEB ACCESS

We are offering a feature where subscribers to our on-line service are able to receive the complete electronic monthly edition of our Notices to Mariners. We are encouraging our clients to visit the website to subscribe for this service:

www.notmar.gc.ca/subscribe

Users wishing to receive information updates for their charts can do so by setting up a "User Profile" on the following web page :

www.notmar.gc.ca/search/mycharts-eng.php?czoXOToibnRtPXN0ZXBfb25lJmXhbmc9ZSI7

This feature permits users to register the nautical charts they currently have in their possession.

Registrants are then automatically notified by e-mail when a Notice to Mariners is published concerning these charts.

ADVISORY NOTICES TO SHIPPING (WRITTEN AND BROADCAST).

The Canadian Coast Guard is implementing a number of changes to the aids to navigation system in Canada.

These changes are advertised as Notices to Shipping (Broadcast and Written) by the Canadian Coast Guard and are followed up with Notices to Mariners, then charts are updated by hand correction, reprints or new editions.

Mariners are advised that all relevant Written Notices to Shipping should be kept until superseded by Notices to Mariners or through revised charts issued by the Canadian Hydrographic Service.

Written Notices to Shipping are available on the Canadian Coast Guard Website at www.ccg-gcc.gc.ca/eng/CCG/NOTSHIP.

The Canadian Hydrographic Service is reviewing the impact of these changes with the Canadian Coast Guard and together are preparing an action plan on the issuing of chart revisions.

For further information contact your local Regional Notices to Shipping (Notships) issuing authorities.

Pacific

Fisheries and Oceans Canada
Canadian Coast Guard
Vancouver MCTS Centre
2380 - 555 West Hastings Street
VANCOUVER BC V6B 4N6

Telephone : (604) 666-6011
Facsimile : (604) 666-8453

RMIC Email: rmic-pacific@pac.dfo-mpo.gc.ca
Website: www.ccg-gcc.gc.ca/e0003907

* Fisheries and Oceans Canada
Canadian Coast Guard
Iqaluit MCTS Centre
Notices to Shipping Series "A" and Series "H"
P.O. Box 189
IQALUIT NU X0A 0H0

Telephone: (867) 979-5269
Facsimile: (867) 979-4264

Email: IQANORDREG@INNAV.GC.CA
Website: www.ccg-gcc.gc.ca/eng/CCG/Notship_Home

* Services provided in English and French

INDEX

CANADIAN HYDROGRAPHIC SERVICE - ANNOUNCEMENT REGARDING CANADIAN HYDROGRAPHIC SERVICE CHART PATCHES	1
CANADIAN HYDROGRAPHIC SERVICE - CUMULATIVE CHART CORRECTIONS.....	1
CANADIAN HYDROGRAPHIC SERVICE - CURRENT CHART EDITION DATES.	1
CANADIAN HYDROGRAPHIC SERVICE - PRINT ON DEMAND CHARTS - CARE AND USE.....	1
CANADIAN HYDROGRAPHIC SERVICE - TRANSPORT CANADA NAVIGATION SAFETY – ECDIS.....	2
CONSOLIDATION OF MARINE COMMUNICATIONS AND TRAFFIC SERVICES (MCTS) CENTRES.....	2
*701 SAGUENAY-ST. LAWRENCE MARINE PARK AND SURROUNDING WATERS - WHALE PROTECTION	2
*702 CANADIAN HYDROGRAPHIC SERVICE - NAUTICAL CHARTS.	4
*703 CANADIAN HYDROGRAPHIC SERVICE – ELECTRONIC NAVIGATIONAL CHARTS.....	4
*713 CANADIAN COAST GUARD - LIST OF CHARTS AND REFERENCE CHARTS (SECTION I) AFFECTED BY TEMPORARY AND PRELIMINARY NOTICES.....	5
*714(P) BROUGHTON STRAIT – DAYBEACON TO BE DISCONTINUED.....	5
*716 CANADIAN COAST GUARD PUBLICATION - AMENDMENT TO THE RADIO AIDS TO MARINE NAVIGATION (PACIFIC AND WESTERN ARCTIC) PUBLICATION – 2013.....	10

NUMERICAL INDEX OF CANADIAN CHARTS AFFECTED

Chart No.	Page	Chart No.	Page	Chart No.	Page
1360	4	6425	4		
2250	4	6426	4		
3050	6	6427	4		
3311	6				
3313	6,7				
3441	7				
3462	7				
3478	7,8				
3479	8				
3490	8				
3491	8				
3526	8				
3536	8				
3546	5				
3675	8				
6217	9				
6286	9				
6419	4				
6421	4				
6423	4				
6424	4				

**Monthly Notices to Mariners - Western Edition
Edition 07/2014**

**SECTION 1
SAFETY AND GENERAL INFORMATION**

**CANADIAN HYDROGRAPHIC SERVICE - ANNOUNCEMENT REGARDING CANADIAN HYDROGRAPHIC SERVICE
CHART PATCHES.**

Colour Web Patches are free to the mariner, and given the quality of many printers, should reproduce well. They will be available in real time all around the world.

CHS welcomes your feedback on this service at chsinfo@dfo-mpo.gc.ca

CANADIAN HYDROGRAPHIC SERVICE - CUMULATIVE CHART CORRECTIONS.

The cumulative Notices to Mariners corrections for charts can now be accessed at www.notmar.gc.ca/search/notmar-eng.php

CANADIAN HYDROGRAPHIC SERVICE - CURRENT CHART EDITION DATES.

CHART EDITIONS

The three terms described below are used to indicate the publication status of Canadian charts.

NEW CHART - "NEWCHT"

The first publication of a Canadian chart embracing an area not previously charted to the scale shown, or embracing an area different from any existing Canadian chart.

NEW EDITION - "NEWEDT"

A new issue of an existing chart containing amendments essential to navigation in addition to those issued in Notices to Mariners and making existing editions obsolete.

REPRINTS

A new issue of the current edition of a chart incorporating no amendments of navigational significance other than those previously promulgated in Notices to Mariners. It may also contain amendments from other sources provided they are not essential to navigation. Previous printings of the current edition remain in force

The current chart edition dates can be accessed at www.chs-shc.gc.ca/charts-cartes/paper-papier/index-eng.asp

CANADIAN HYDROGRAPHIC SERVICE - PRINT ON DEMAND CHARTS - CARE AND USE.

Background

By providing nautical charts to the public, the goal of the Canadian Hydrographic Service (CHS) is to provide services for safe navigation in a fiscally responsible manner. As a result, CHS continues to expand its portfolio of nautical paper charts that are printed using Print On Demand (POD) technology. These charts are easily recognized by their whiter paper and the coloured logo of the Canadian Hydrographic Service. This new technology enables CHS to print charts in a more efficient manner while enhancing chart content through being able to quickly add new and important information. POD technology provides customers with up-to-date charts without the historical hand-drawn corrections or glued-on patches. Additionally, this technology eliminates out-of-stock situations which arise with the traditional printing and warehousing methods. In the event of a national emergency, CHS can respond to the appropriate authorities with best available information very quickly.

Care of Your POD Chart

CHS encourages its customers to handle the POD charts more carefully than the traditional lithographic charts. When plotting information on POD charts, use HB pencils and apply limited pressure. Testing has suggested that an Indian gum eraser is more effective than alternatives when used on the product. This eraser is also suitable for charts printed using lithographic processes.

Monthly Notices to Mariners - Western Edition
Edition 07/2014

SECTION 1
SAFETY AND GENERAL INFORMATION

CANADIAN HYDROGRAPHIC SERVICE - TRANSPORT CANADA NAVIGATION SAFETY – ECDIS.

Mariners are advised that ECDIS may not display some isolated shoal depths when operating in "base or standard display" mode. Route planning and monitoring alarms for these shoal depths may not always be activated. To ensure safe navigation and to confirm that a planned route is clear of such dangers, mariners should visually inspect the planned route and any deviations from it using ECDIS configured to display "all data". The automated voyage planning check function should not be solely relied upon.

CONSOLIDATION OF MARINE COMMUNICATIONS AND TRAFFIC SERVICES (MCTS) CENTRES.

The Canadian Coast Guard is consolidating and modernizing its Marine Communications and Traffic Services. These changes will result in a configuration of 12 MCTS Centres strategically located across the country. Information pertaining to consolidation will be advertised to clients by all available means.

Western Region

Tofino MCTS will close; services will be provided remotely by Prince Rupert MCTS
Comox and Vancouver MCTS will close; services will be provided remotely by Victoria MCTS

There will be no reduction in the MCTS level of service provided to clients. Mariners should be aware that, as a result of consolidation, contact information, weather and other pertinent marine broadcast schedules may change. These changes will be advertised in RAMN, as they become available.

Mariners should check NOTMAR PART 3 on a monthly basis for updates.

***701 SAGUENAY-ST. LAWRENCE MARINE PARK AND SURROUNDING WATERS - WHALE PROTECTION**

The waters in and around the Saguenay-St. Lawrence Marine Park are well known for their resident threatened beluga population and the wide diversity of whales that migrate there to feed, particularly between April and November.

REGULATORY PROTECTION MEASURES

All whale species that are found in the St. Lawrence are protected under the *Marine Mammal Regulations*, pursuant to the *Fisheries Act*. Within the boundaries of the Marine Park, specific measures are set out in the *Marine Activities in the Saguenay–St. Lawrence Marine Park Regulations*, pursuant to the *Act Establishing the Saguenay-St. Lawrence Marine Park*. Any collision with a marine mammal within the Marine Park must immediately be reported to a park warden at 1-866-508-9888. For collisions that occur outside the Marine Park or for any situation involving a marine mammal that is dead or in trouble, contact the emergency network at 1-877-722-5346 or on channel 16. (see section 5C of the Annual Edition of the Notices to Mariners – April 2014 to March 2015).

VOLUNTARY PROTECTION MEASURES

Provisional measures in effect from May 1 to October 31, 2014

These measures apply to merchant vessels and cruise ships between Pointe à Boisvert and Cap de la Tête au Chien to prevent collisions with whales (see link below to view map). These measures should only be taken when they will not jeopardize navigational safety.

Caution area (yellow area): To reduce the risk of collisions with whales that can be present anywhere in this area, heightened vigilance is critical for navigators. Posting a lookout is recommended in order to increase the chances of seeing the whales and thus taking necessary measures to avoid them. If bypassing the whales is not possible, slow down and wait for the animals to move away to a distance greater than 400 meters (0.215 nautical miles) before resuming original speed. It is more difficult to see the animals at night therefore increased caution is recommended.

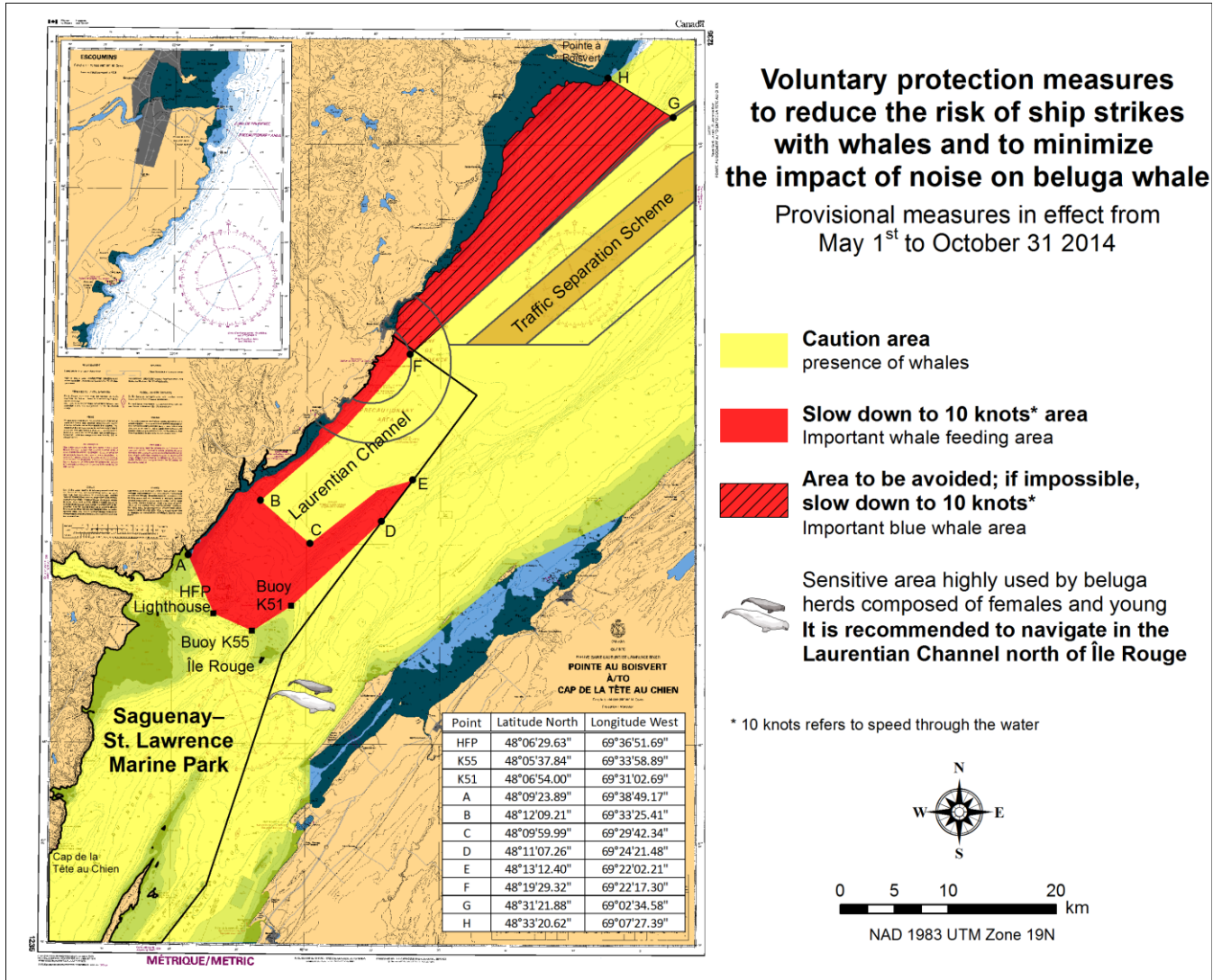
Slow down to 10 knots area (red area): To reduce the risk of collisions with whales in this feeding area, it is recommended that vessels slow down to a maximum speed through the water of 10 knots and post a lookout. It is further recommended to remain in the Laurentian Channel to the north of île Rouge to minimize the impact of noise

SECTION 1
SAFETY AND GENERAL INFORMATION

in a sensitive area south of this island, which is highly frequented by herds of beluga whales composed of females and young.

Area to be avoided (hatched red area): To reduce noise and the risk of collisions with whales, vessels should avoid transiting through this area which is highly frequented by blue whales, an endangered species. If the area cannot be avoided, slow down to a maximum speed through the water of 10 knots.

See attached map:



**Monthly Notices to Mariners - Western Edition
Edition 07/2014**

**SECTION 1
SAFETY AND GENERAL INFORMATION**

***702 CANADIAN HYDROGRAPHIC SERVICE - NAUTICAL CHARTS.**

CHARTS	MAIN TITLE	SCALE	PUBLISHED	CAT#	PRICE
New Charts					
1360	Lac Memphrémagog	1:30000	23-MAY-2014		
New Editions					
2250	Bruce Mines to/à Sugar Island	1:25000	28-FEB-2014	3	20.00
6419	Norman Wells to/à Carcajou Ridge Kilometre 910 / Kilomètre 980	1:50000	21-MAR-2014	4	12.00
6421	Hardie Island to/à Fort Good Hope Kilometre 1040 / Kilomètre 1100	1:50000	21-MAR-2014	4	12.00
6423	Askew Islands to/à Bryan Island Kilometre 1180 / Kilometre 1240	1:50000	21-MAR-2014	4	12.00
6424	Bryan Island to/à Travailant River Kilometre 1240 / Kilomètre 1325	1:50000	21-MAR-2014	4	12.00
6425	Travailant River to/à Adam Cabin Creek Kilometre 1325 / Kilomètre 1400	1:50000	21-MAR-2014	4	12.00
6426	Adam Cabin Creek to/à Point Separation Kilometre 1400 / Kilomètre 1480	1:50000	21-MAR-2014	4	12.00
6427	Point Separation to/au Aklavik Channel Kilometre 1480 / Kilomètre 1540	1:50000	21-MAR-2014	4	12.00
Charts Permanently Withdrawn					
1361	Lac Memphrémagog				

***703 CANADIAN HYDROGRAPHIC SERVICE – ELECTRONIC NAVIGATIONAL CHARTS.**

NEW PRODUCTS	
S-57 ENC NUMBER	CHART TITLE
CA376316	Fortune Bay Northern Portion/Partie Nord
CA479239	Lac Memphrémagog A-B
CA479240	Lac Memphrémagog B-C
CA579241	Magog

**Monthly Notices to Mariners - Western Edition
Edition 07/2014**

**SECTION 1
SAFETY AND GENERAL INFORMATION**

***713 CANADIAN COAST GUARD - LIST OF CHARTS AND REFERENCE CHARTS (SECTION I) AFFECTED BY TEMPORARY AND PRELIMINARY NOTICES.**

**IN EFFECT JUNE 27th, 2014
(REVISED AND PROMULGATED QUARTERLY)**

2305	1204(P)/08
4010	605(P)/14
4124	307(P)/14
4130	604(P)/14
4201	509(P) /13
4233	210(P)/12
4243	308(P)/14
4266	608(P)/12, 609(P)/12, 420(P)/14
4279	1210(P)/13
4281	1111(P)/11
4340	305(P) /14; 306(P) /14, 418(P)/14
4367	508(P)/14
4377	405(P)/13
4386	1108(P)/13, 507(P)/14
4396	510(P)/13
4449	1211(P)/13; 106(P)/14
4450	1005(P)/13; 1006(P)/13
4466	109(P)/14
4512	1205(P) /13
4522	1103(T) /13; 1207(T) /13;
4596	1209(T) /13;
4670	1206(T) /13;
4679	603(P)/14
4830	1104(T) /13;
4905	204(P) /14
4909	613(P)/12, 810(P)/12; 205(P) /14; 206 (P) /14; 207(P) /14; 304(P) /14, 421(P)/14
4911	811(P)/12, 612(P)/13
4921	713(P)/13
5051	1208(T) /13;
6267	112(P)/06
US14884	715(T)/13

***714(P) BROUGHTON STRAIT – DAYBEACON TO BE DISCONTINUED.**

Reference Chart: 3546

The Canadian Coast Guard proposes to permanently discontinue the following Aid to navigation:

Eel Rock Daybeacon (50° 35' 36.2"N 127° 05' 33.3"W).

Comments on this action are solicited from mariners and other interested parties.

Comments should be directed to the following within three months from the date of this notice:

Regional Superintendent,
Marine Navigation Services,
Canadian Coast Guard,
25 Huron Street,
Victoria, BC, V8V 4V9,
Telephone: 250-480-2600

Any objections raised must state the facts on which they are based and should include supporting information on safety, commerce and public benefit.

(P2014-052)

Monthly Notices to Mariners - Western Edition
Edition 07/2014

SECTION 2
CHART CORRECTIONS

3050 - West Arm Kootenay Lake, Procter Light to Harrop Narrows - Sheet/Feuille 9 - New Edition - 03-MAY-1996 - NAD 1927

25-JUL-2014

LNMD. 20-JUN-2014

Add note
See/Voir note
DEPTHS/PROFONDEURS

49°37'56.0"N 116°56'24.0"W

DFO(6202885-01)

Add

note
DEPTHS
Depths in the entrance to West Arm, particularly in the vicinity of route mileage indicator 59, are subject to change as a result of silting and scouring.
PROFONDEURS
Les profondeurs dans l'entrée de West Arm, en particulier dans les parages du point milliaire 59, peuvent changer en raison de l'ensablement et de l'affouillement.

49°37'40.0"N 116°59'00.0"W

DFO(6202885-02)

3311 - Howe Sound - Sheet/Feuille 2 - New Edition - 31-DEC-1993 - NAD 1983

25-JUL-2014

LNMD. 11-JUL-2014

Add obstruction with known depth of 15 metres
(See Chart No. 1, K41)

49°39'44.5"N 123°15'18.0"W

DFO(6202888-02)

3311 - Westview - Sheet/Feuille 5 - New Edition - 31-DEC-1993 - NAD 1983

11-JUL-2014

LNMD. 25-APR-2014

Add port hand daybeacon
(See Chart No. 1, Qt)
This notice affects Electronic Navigational Chart: CA570159

49°49'58.6"N 124°31'46.2"W

DFO(6202868-01)

3313 - Swanson Channel - Sheet/Feuille 8 - New Edition - 02-JAN-2009 - NAD 1983

18-JUL-2014

LNMD. 27-JUN-2014

Add obstruction with known depth of 18 metres marked Mooring/Amarre
(See Chart No. 1, K41)
This notice affects Electronic Navigational Chart: CA470003, CA570567

48°42'46.9"N 123°27'00.5"W

DFO(6202884-01)

3313 - Saanich Inlet - Sheet/Feuille 13 - New Edition - 02-JAN-2009 - NAD 1983

18-JUL-2014

LNMD. 27-JUN-2014

Add obstruction with known depth of 18 metres marked Mooring/Amarre
(See Chart No. 1, K41)
This notice affects Electronic Navigational Chart: CA470003, CA570567

48°42'46.9"N 123°27'00.5"W

DFO(6202884-01)

3313 - Sansum Narrows - Sheet/Feuille 14 - New Edition - 02-JAN-2009 - NAD 1983

18-JUL-2014

LNMD. 27-JUN-2014

Add obstruction with known depth of 7 metres marked Mooring/Amarre
(See Chart No. 1, K41)
This notice affects Electronic Navigational Chart: CA470003, CA570237

48°44'23.9"N 123°36'07.6"W

DFO(6202884-02)

Monthly Notices to Mariners - Western Edition
Edition 07/2014

SECTION 2
CHART CORRECTIONS

Add	obstruction with known depth of 6 metres marked Mooring/Amarre (See Chart No. 1, K41) This notice affects Electronic Navigational Chart: CA470003, CA570237	48°45'21.4"N 123°36'28.5"W <i>DFO(6202884-03)</i>
Delete	depth of 27 metres (See Chart No. 1, I10) This notice affects Electronic Navigational Chart: CA470003	48°44'24.0"N 123°36'07.5"W <i>DFO(6202884-04)</i>
3313 - Boundary Pass - Sheet/Feuille 24 - New Edition - 02-JAN-2009 - NAD 1983		
18-JUL-2014		LNMD. 27-JUN-2014
Add	on certain copies beacon marked "danger reef" (See Chart No. 1, Q80)	48°45'39.5"N 122°52'34.0"W <i>DFO(6202883-01)</i>
3441 - Haro Strait, Boundary Pass and/et Satellite Channel - New Edition - 01-JUL-2005 - NAD 1983		
18-JUL-2014		LNMD. 13-JUN-2014
Add	obstruction with known depth of 18 metres marked Mooring/Amarre (See Chart No. 1, K41) This notice affects Electronic Navigational Chart: CA470003, CA570567	48°42'46.9"N 123°27'00.5"W <i>DFO(6202884-01)</i>
Add	obstruction with known depth of 7 metres marked Mooring/Amarre (See Chart No. 1, K41) This notice affects Electronic Navigational Chart: CA470003, CA570237	48°44'23.9"N 123°36'07.6"W <i>DFO(6202884-02)</i>
Add	obstruction with known depth of 6 metres marked Mooring/Amarre (See Chart No. 1, K41) This notice affects Electronic Navigational Chart: CA470003, CA570237	48°45'21.4"N 123°36'28.5"W <i>DFO(6202884-03)</i>
Delete	depth of 27 metres (See Chart No. 1, I10) This notice affects Electronic Navigational Chart: CA470003	48°44'24.0"N 123°36'07.5"W <i>DFO(6202884-04)</i>
3462 - Juan de Fuca Strait to/à Strait of Georgia - New Edition - 01-JUL-2005 - NAD 1983		
18-JUL-2014		LNMD. 27-JUN-2014
Add	on certain copies beacon marked "danger reef" (See Chart No. 1, Q80)	48°45'39.5"N 122°52'34.0"W <i>DFO(6202883-01)</i>
3478 - Sansum Narrows - New Edition - 12-JUL-2013 - NAD 1983		
18-JUL-2014		LNMD. 13-JUN-2014
Add	obstruction with known depth of 7 metres marked Mooring/Amarre (See Chart No. 1, K41) This notice affects Electronic Navigational Chart: CA470003, CA570237	48°44'23.9"N 123°36'07.6"W <i>DFO(6202884-02)</i>

Monthly Notices to Mariners - Western Edition
Edition 07/2014

SECTION 2
CHART CORRECTIONS

Add obstruction with known depth of 6 metres marked Mooring/Amarre 48°45'21.4"N 123°36'28.5"W
(See Chart No. 1, K41)
This notice affects Electronic Navigational Chart: CA470003, CA570237
DFO(6202884-03)

3479 - Approaches to/Approches à Sidney - New Chart - 18-MAY-2007 - NAD 1983
18-JUL-2014

LNMD. 28-SEP-2012

Add obstruction with known depth of 18 metres marked Mooring/Amarre 48°42'46.9"N 123°27'00.5"W
(See Chart No. 1, K41)
This notice affects Electronic Navigational Chart: CA470003, CA570567
DFO(6202884-01)

**3490 - Fraser River/Fleuve Fraser, Sand Heads to/à Douglas Island, Compartment B-C - New Edition - 02-NOV-2012 -
World Geodetic System 1984**
25-JUL-2014

LNMD. 20-JUN-2014

Delete note 49°11'54.0"N 122°54'35.0"W
VANCOUVER TRAFFIC
SECTOR/SECTEUR 3
Channel/Voie 12
DFO(6202887-01)

3491 - Compartment B-C - New Edition - 19-OCT-2012 - World Geodetic System 1984
25-JUL-2014

LNMD. 30-MAY-2014

Delete note 49°11'54.0"N 122°54'35.0"W
VANCOUVER TRAFFIC
SECTOR/SECTEUR 3
Channel/Voie 12
DFO(6202887-01)

3526 - Howe Sound - New Edition - 01-JUL-2005 - NAD 1983
25-JUL-2014

LNMD. 22-JUN-2012

Add obstruction with known depth of 15 metres, marked Mooring/Amarre 49°39'44.5"N 123°15'18.0"W
(See Chart No. 1, K41)
This notice affects Electronic Navigational Chart: CA470004
DFO(6202888-01)

3536 - Powell River and/et Westview - New Chart - 21-APR-1978 - NAD 1927
11-JUL-2014

LNMD. 20-DEC-2013

Add port hand daybeacon 49°49'59.2"N 124°31'41.1"W
(See Chart No. 1, Qt)
This notice affects Electronic Navigational Chart: CA570159
DFO(6202868-01)

3675 - Gold River - New Chart - 20-NOV-1998 - NAD 1983
25-JUL-2014

LNMD. 11-APR-2014

Delete depth of 3.1 metres 49°40'41.5"N 126°07'00.5"W
(See Chart No. 1, I10)
DFO(6202886-01)

Add depth of 1.7 metres 49°40'41.0"N 126°07'00.0"W
(See Chart No. 1, I10)
DFO(6202886-02)

Monthly Notices to Mariners - Western Edition
Edition 07/2014

SECTION 2
CHART CORRECTIONS

6217 - Ptarmigan Bay and/et Shoal Lake - Sheet/Feuille 2 - New Edition - 01-MAR-2002 - NAD 1983

25-JUL-2014

LNMD. 29-JUN-2007

Add submarine cable (See Chart No. 1, L30.1) joining 49°41'44.0"N 094°48'53.5"W
49°41'36.7"N 094°48'49.3"W
49°41'33.4"N 094°48'35.7"W
49°41'52.7"N 094°47'12.0"W
49°41'57.7"N 094°47'06.7"W
and 49°42'02.1"N 094°47'08.2"W
DFO(6603990-01)

6286 - Whitedog Dam to/à Minaki - Sheet/Feuille 2 - New Edition - 06-SEP-2002 - NAD 1983

25-JUL-2014

LNMD. 24-JUN-2011

Add submarine cable (See Chart No. 1, L30.1) joining 50°04'45.1"N 094°37'49.0"W
50°04'52.0"N 094°38'01.0"W
50°04'55.0"N 094°38'28.0"W
50°04'52.3"N 094°38'30.0"W
and 50°04'50.7"N 094°38'29.0"W
DFO(6603989-01)

Add submarine cable (See Chart No. 1, L30.1) joining 50°04'00.8"N 094°38'44.8"W
50°04'37.9"N 094°38'11.8"W
50°04'44.7"N 094°38'02.4"W
50°04'45.2"N 094°37'57.0"W
and 50°04'44.5"N 094°37'53.1"W
DFO(6603989-02)

Add submarine cable (See Chart No. 1, L30.1) joining 50°04'44.5"N 094°37'53.1"W
50°04'45.5"N 094°37'53.5"W
50°04'46.0"N 094°37'52.2"W
and 50°04'45.1"N 094°37'49.0"W
DFO(6603989-03)

Monthly Notices to Mariners - Western Edition
Edition 07/2014
SECTION 3
CORRECTIONS TO RADIO AIDS TO MARINE NAVIGATION

***716 CANADIAN COAST GUARD PUBLICATION - AMENDMENT TO THE RADIO AIDS TO MARINE NAVIGATION (PACIFIC AND WESTERN ARCTIC) PUBLICATION – 2013.**

Part 3 – Page 13 of 35

<http://www.ccg-gcc.gc.ca/folios/01018/docs/Pacific-2013-Part3-eng.pdf>

VESSEL TRAFFIC SERVICES PACIFIC AND WESTERN ARCTIC

AMEND

Co-operative Vessel Traffic Services (CVTS)

Participation with Tofino, Seattle and Victoria Traffic is mandatory within Canadian and United States territorial waters. The CVTS Area of Operation is defined as 124° 40W south along the Washington coast to 48° 00N then west to 125° 15W and north to 48° 35 45N. Inbound vessels are encouraged to check in with Tofino Traffic **at either 48° 00N or 126° 00W prior to entering the traffic separation scheme.**

TO READ

Co-operative Vessel Traffic Services (CVTS)

Participation with Tofino, Seattle and Victoria Traffic is mandatory within Canadian and United States territorial waters. The CVTS Area of Operation is defined as 124° 40W south along the Washington coast to 48° 00N then west to 125° 15W and north to 48° 35 45N. Inbound vessels are to check in with Tofino Traffic **on VHF Channel 74 (156.725MHz) at either 48° 00N or 125° 15W prior to entering the traffic separation scheme. An information service such as a vessel’s identity, destination, or other information obtained through the VTS reports and sensors, is available upon request outside of the VTS zone.**

Part 3 - Page 19 of 35

**VESSEL TRAFFIC SERVICES ZONE SCHEDULES
 PRINCE RUPERT VTS ZONE**

AMEND

Sector	Boundaries
1	All Canadian waters north of Vancouver Island from a line joining Cape Caution light 51°09'50"N127°47'06"W; to Mexicana Point 50° 54' 51.96"N 127° 59' 58.04"W thence to Cape Sutil 50° 52'34.23"N 128°3' 7.24"W. Then following the northwestern shore line to Cape Scott thence; a line extending 281° (T) from 50°46'57"N 128°25'32"W; to 50°52'00"N 129°05'00"W following a line 220 degrees (T) to the limit of the Territorial Sea; and thence to the Alaska/British Columbia border , but not including those waters described in Sector 2 or mainland inlets and channels outside VHF coverage.

TO READ

Sector	Boundaries
1	All Canadian waters north of Vancouver Island from a line joining Cape Caution light 51°09'50"N127°47'06"W; to Mexicana Point 50° 54' 51.96"N 127° 59' 58.04"W thence to Cape Sutil 50° 52'34.23"N 128°3' 7.24"W. Then following the northwestern shore line to Cape Scott thence; a line extending 281° (T) from 50°46'57"N 128°25'32"W; to 50°52'00"N 129°05'00"W following a line 220 degrees (T) to the limit of the Territorial Sea; and thence northward following the limit of the Territorial Sea to a line 270 degrees (T) from Cape Knox on the northwestern tip of Graham Island 54°11'00"N 133°05'00"W to the limit of the Territorial Sea , but not including those waters described in Sector 2 or mainland inlets and channels outside VHF coverage.

Monthly Notices to Mariners - Western Edition
Edition 07/2014
SECTION 3
CORRECTIONS TO RADIO AIDS TO MARINE NAVIGATION

AMEND

Sector	Boundaries
2	<p>All Canadian waters bounded by a line running from Bareside Point 53°54'12"N 130°16'31"W; to Swede Point 53°53'16"N 130°15'35"W. Then following the northern shoreline of Pitt Island to a position of 53°48'03"N 129°58'31"W; thence to a position of 53°48'41.4"N 129°57'07.9"W; thence northward following the mainland shore to a position of 54°09'38"N 129°57'37"W; thence to a position of 54°11'53"N 129°58'51"W; thence northward following the mainland shore to 54°37'57"N 130°26'31"W; thence to a position of 54°38'02"N 130°26'31"W; thence northward along the west shore of Maskelyne Island to Maskelyne Point 54°38'55"N 130°26'42"W; thence to Wales Point 54°42'17"N 130°28'33"W; thence westward along the shore of Wales Island to 54°42'06"N 130°31'47"W; thence to a position of 54°42'27"N 130°36'50"W; thence westward along the International Boundary to Cape Muzon light 54°39'48"N 132°41'30"W; thence westward along the shore of Dall Island to Point Cornwallis light 54°42'12"N 132°52'17"W; thence southward to Langara Point 54°15'23"N 133°03'30"W; thence southward along the west coast of Langara Island to Lacy Island 54°13'18"N 133°05'24"W; thence southward to Cape Knox on Graham Island 54°11'00"N 133°05'00"W; thence eastward along Graham Island shoreline to Rose Spit 54°11'12.5"N 131°38'43"W; thence southeastward to Seal Rocks 54°00'00"N 130°47'26"W; thence to Oval Point on Porcher Island 53°56'24"N 130°43'15"W, thence eastward following Porcher Island shoreline to Bareside Point.</p>

TO READ

Sector	Boundaries
2	<p>All Canadian waters bounded by a line running from Bareside Point 53°54'12"N 130°16'31"W; to Swede Point 53°53'16"N 130°15'35"W. Then following the northern shoreline of Pitt Island to a position of 53°48'03"N 129°58'31"W; thence to a position of 53°48'41.4"N 129°57'07.9"W; thence northward following the mainland shore to a position of 54°09'38"N 129°57'37"W; thence to a position of 54°11'53"N 129°58'51"W; thence northward following the mainland shore to 54°37'57"N 130°26'31"W; thence to a position of 54°38'02"N 130°26'31"W; thence northward along the west shore of Maskelyne Island to Maskelyne Point 54°38'55"N 130°26'42"W; thence to Wales Point 54°42'17"N 130°28'33"W; thence westward along the shore of Wales Island to 54°42'06"N 130°31'47"W; thence to a position of 54°42'27"N 130°36'50"W; thence westward along the International Boundary to Cape Muzon light 54°39'48"N 132°41'30"W; thence westward along the shore of Dall Island to Point Cornwallis light 54°42'12"N 132°52'17"W; thence a southwestward arc following the limit of the Territorial Sea to position 54°11'00"N 133°28'34.6"W; thence 090 degrees (T) eastward to Cape Knox on Graham Island 54°11'00"N 133°05'00"W; thence eastward along Graham Island shoreline to Rose Spit 54°11'12.5"N 131°38'43"W; thence southeastward to Seal Rocks 54°00'00"N 130°47'26"W; thence to Oval Point on Porcher Island 53°56'24"N 130°43'15"W, thence eastward following Porcher Island shoreline to Bareside Point.</p>

Monthly Notices to Mariners - Western Edition
Edition 07/2014
SECTION 3
CORRECTIONS TO RADIO AIDS TO MARINE NAVIGATION

Part 3 - Page 22 of 35

AMEND

Calling-In-Points				
Number	Sector	Name	General Description and Conditions	Geographic Description
24	Change	Langara Point / Point Cornwallis	A line joining Langara Point light and Point Cornwallis.	A line running from 54°15'23"N 133°03'30"W; to 54°42'12"N 132°52'17"W
25	1	Langara Island	A line extending 220° (True) from Langara Point light to the limit of the Territorial Sea.	A line running 220° (T) from 54°15'23"N 133°03'30"W to the limit of the Territorial Sea.

TO READ

Calling-In-Points				
Number	Sector	Name	General Description and Conditions	Geographic Description
24	2	Zone limit	A line running from Point Cornwallis light extending on a southwestward arc following the limit of the Territorial Sea to 54°11'00"N 133°28'34.6"W	A line running from 54°42'12"N 132°52'17"W; to 54°11'00"N 133°28'34.6"W along the limit of the Territorial Sea
25	Change	Cape Knox	A line extending 270° (True) from Cape Knox to the limit of the Territorial Sea.	A line running 270° (T) from 54°11'00"N 133°05'00"W; to the limit of the Territorial Sea.

ADD

Calling-In-Points				
Number	Sector	Name	General Description and Conditions	Geographic Description
36	Change	Cape Scott	A line joining Cape Scott light with Triangle Island.	A line running from 50°46'57"N 128°25'32"W, to 50°52'00"N 129°05'00"W

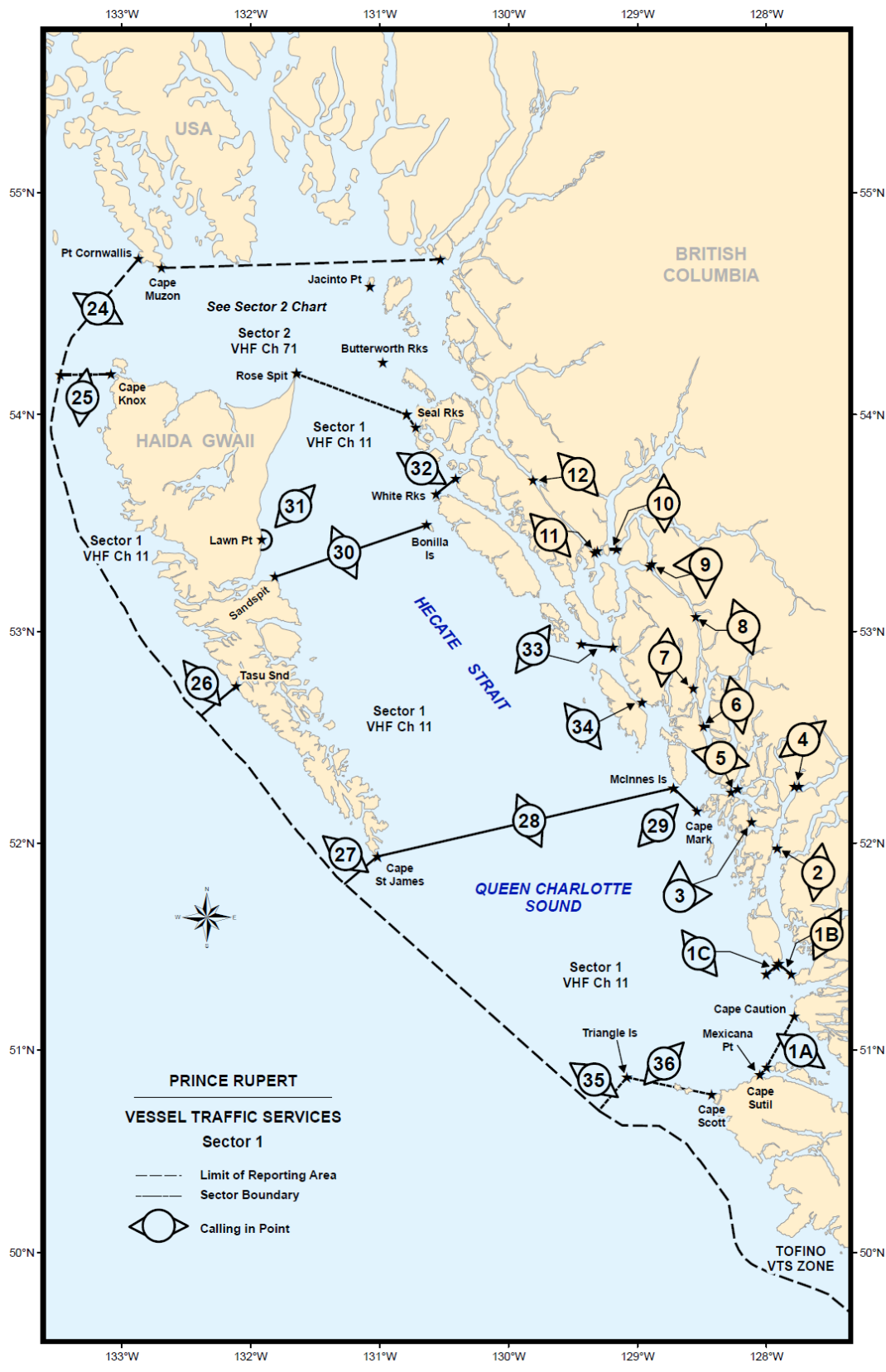
Part 3 - Page 23 of 35

REPLACE

Prince Rupert VTS Sector 1 calling in point chart

WITH THE FOLLOWING CHART

Monthly Notices to Mariners - Western Edition
Edition 07/2014
SECTION 3
CORRECTIONS TO RADIO AIDS TO MARINE NAVIGATION



Monthly Notices to Mariners - Western Edition
Edition 07/2014
SECTION 3
CORRECTIONS TO RADIO AIDS TO MARINE NAVIGATION

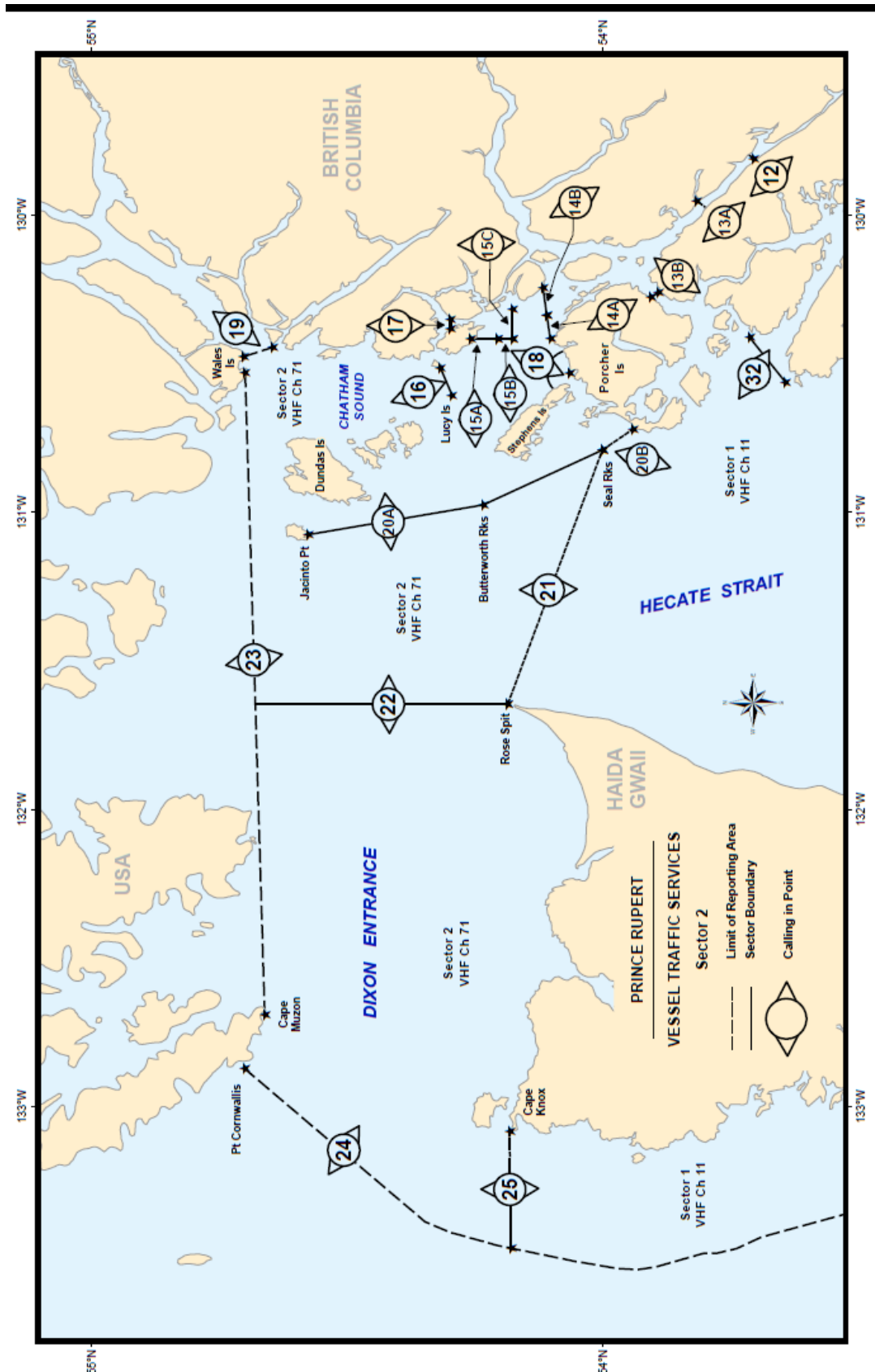
Part 3 - Page 24 of 35

REPLACE

Prince Rupert VTS Sector 2 calling in point chart

WITH THE FOLLOWING CHART

Monthly Notices to Mariners - Western Edition
 Edition 07/2014
SECTION 3
CORRECTIONS TO RADIO AIDS TO MARINE NAVIGATION



Monthly Notices to Mariners - Western Edition
Edition 07/2014
SECTION 3
CORRECTIONS TO RADIO AIDS TO MARINE NAVIGATION

Part 3 - Page 25 of 35

AMEND

Tofino VTS Zone, Sector 1, Boundary

The following describes all Canadian waters which are contained in the Tofino Vessel Traffic Services Zone excluding those United States waters within that portion of the Canada/United States Co-operative Vessel Traffic Management System (CVTMS) administered by the Tofino Vessel Traffic Centre bounded by a line drawn from: 48°28'36"N 124°40'00"W, to 48°34'58"N 124°40'00"W, thence following the shoreline to 48°40'00"N 124°51'00"W, to 48°40'11".5N 124°51'29"W, thence following the shoreline to 48°43'18"N 125°05'54"W, to 48°47'16"N 125°12'59".5W thence following the shoreline to 48°53'03"N 125°04'24"W, to 48°56'00"N 125°01'50".5W thence following the shoreline to 48°56'51"N 125°00'02".5W to 48°57'28"N 124°59'15"W, thence following the shoreline to 49°14'27"N 124°48'46"W, to 49°14'27"N 124°50'13".5W thence following the shoreline to 49°04'13".5N 124°51'16"W, to 49°03'20".5N 124°51'44"W, thence following the shoreline to 48°59'03"N 124°57'54"W, to 48°58'41"N 124°59'34"W, thence following the shoreline to 48°57'19"N 125°01'50"W, to 48°57'57"N 125°04'50".5W to 48°59'06"N 125°09'39".5W to 48°58'48"N 125°10'57"W, thence following the shoreline to 49°00'59".5N 125°18'39"W, to 49°01'54"N 125°19'26".5W thence following the shoreline to 48°55'18"N 126°30'29"W, to 48°55'18"N 125°32'06".5W thence following the shoreline to 49°05'41"N 125°53'18"W, to 49°17'03"N 126°13'44"W, to 49°23'00"N 126°32'34"W, to 49°44'57"N 126°58'54"W, to 49°51'35"N 127°08'56"W, to 49°59'49"N 127°27'06".5W, to 50°04'48"N 127°48'47"W, thence following the shoreline to 50°13'14"N 127°47'54"W, to 50°19'28"N 127°58'26"W, thence following the shoreline to 50°21'09"N 127°59'27".5W to 50°26'38"N 128°02'43".5W to 50°28'11"N 128°06'05"W, thence following the shoreline to 50°38'23".5N 128°19'35"W, to 50°40'15"N 128°21'40"W, thence following the shoreline to 50°46'57"N 128°25'32"W, to 50°52'00"N 129°05'00"W, thence following a line 220° (T) to the limit of the Territorial Sea 50°42'11"N 129°18'00"W, thence following the Territorial Sea Boundary south eastward to intersect the International boundary at 48°28'36"N 124°40'00"W, thence a line Northward to the Canadian shoreline at 48°34'58"N 124°40'00"W.

TO READ

Tofino VTS Zone, Sector 1, Boundary

The following describes all Canadian waters which are contained in the Tofino Vessel Traffic Services Zone excluding those United States waters within that portion of the Canada/United States Co-operative Vessel Traffic Management System (CVTMS) administered by the Tofino Vessel Traffic Centre bounded by a line drawn from: 48°28'36"N 124°40'00"W, to 48°34'58"N 124°40'00"W, thence following the shoreline to 48°40'00"N 124°51'00"W, to 48°40'11.5"N 124°51'29"W, thence following the shoreline to 48°43'18"N 125°05'54"W, to 48°47'16"N 125°12'59".5W thence following the shoreline to 48°53'03"N 125°04'24"W, to 48°56'00"N 125°01'50".5W thence following the shoreline to 48°56'51"N 125°00'02".5W to 48°57'28"N 124°59'15"W, thence following the shoreline to 49°14'27"N 124°48'46"W, to 49°14'27"N 124°50'13.5"W thence following the shoreline to 49°04'13.5"N 124°51'16"W, to 49°03'20.5"N 124°51'44"W, thence following the shoreline to 48°59'03"N 124°57'54"W, to 48°58'41"N 124°59'34"W, thence following the shoreline to 48°57'19"N 125°01'50"W, to 48°57'57"N 125°04'50.5"W to 48°59'06"N 125°09'39.5"W to 48°58'48"N 125°10'57"W, thence following the shoreline to 49°00'59.5"N 125°18'39"W, to 49°01'54"N 125°19'26.5"W thence following the shoreline to 48°55'18"N 125°30'29"W, to 48°55'18"N 125°32'06.5"W thence following the shoreline to 49°05'41"N 125°53'18"W, to 49°17'03"N 126°13'44"W, to 49°23'00"N 126°32'34"W, to 49°44'57"N 126°58'54"W, to 49°51'35"N 127°08'56"W, to 49°59'49"N 127°27'06.5"W, to 50°04'48"N 127°48'47"W, thence following the shoreline to 50°13'14"N 127°47'54"W, to 50°19'28"N 127°58'26"W, thence following the shoreline to 50°21'09"N 127°59'27.5"W to 50°26'38"N 128°02'43.5"W to 50°28'11"N 128°06'05"W, thence following the shoreline to 50°38'23.5"N 128°19'35"W, to 50°40'15"N 128°21'40"W, thence following the shoreline to 50°46'57"N 128°25'32"W, to 50°52'00"N 129°05'00"W, thence following a line 220° (T) to the limit of the Territorial Sea 50°42'11"N 129°18'00"W, thence following the Territorial Sea Boundary south eastward to intersect the International boundary at 48°28'36"N 124°40'00"W, thence a line Northward to the Canadian shoreline at 48°34'58"N 124°40'00"W.

Monthly Notices to Mariners - Western Edition
Edition 07/2014
SECTION 3
CORRECTIONS TO RADIO AIDS TO MARINE NAVIGATION

Part 3 - Page 32 of 35

DELETE

Vancouver VTS zone, sector 4, calling in point 40

Number	Sector	Name	General Description and Conditions	Geographic Description
40	Change	Cape Scott	A line joining Cape Scott light with Triangle Island..	A line running from 50°46'57"N 128°25' 2"W, to 50°52'00"N 129°05'00"W

**Monthly Notices to Mariners - Western Edition
Edition 07/2014**

**SECTION 4
SAILING DIRECTIONS AND SMALL CRAFT GUIDE CORRECTIONS**

PAC 201 — Juan de Fuca Strait and Strait of Georgia, First Edition, 2012

Chapter 5 — Paragraph 279

Delete: 026°

Replace by: 025°

(P2014-15.1)

Chapter 7 — Paragraph 154

Delete: 254°

Replace by: 255°

(P2014-14.1)

**Monthly Notices to Mariners - Western Edition
Edition 07/2014**

**SECTION 5
LIST OF LIGHTS, BUOYS AND FOG SIGNALS CORRECTIONS**

No.	Name	Position ----- Latitude N. Longitude W.	Light Characteristics	Focal Height in m. above water	Nomi- nal Range	Description ----- Height in meters above ground	Remarks ----- Fog Signals
431.5 G5420.6	Gibsons Landing Breakwater South	49 23 57.7 123 30 17.8	Fl G	4s 6.0	3	White mast, green, white and black square daymark.	Year round. Chart:3534 Edn 07/14 (P14-037)
472	Westview Harbour South	On breakwater. 49 49 55.5 124 31 42	Fl G	4s 3.3	4	Mast.	Privately maintained. Year round. Chart:3536 Edn 07/14 (P14-050)
652 G5739.6	Gertrude Point	On point, Douglas Channel. 53 37 54.3 129 13 49.2	Fl W	4s 4.5	5	White square skeleton tower.	Year round. Chart:3977 Edn 07/14 (P14-038)
652.2 G5739.66	Hawkesbury Island	W. side of island. 53 37 08.7 129 10 51.3	Fl W	6s 4.8	5	White square skeleton tower.	Flash 0.5 s; eclipse 5.5 s. Year round. Chart:3977 Edn 07/14 (P14-039)
652.5 G5739.7	Maitland Island Southwest End	53 42 08.1 129 04 33.7	Fl W	4s 8.2	5	White square skeleton tower with white dayboards on 3 sides..	Year round. Chart:3977 Edn 07/14 (P14-040)
653 G5739.6	Emilia Island	On SE. end of island. 53 45 30.7 128 58 20.7	Fl W	6s 4.9	5	Square skeleton tower.	Flash 0.5 s; eclipse 5.5 s. Visible from 231° through W. and N. to 064°. Year round. Chart:3977 Edn 07/14 (P14-041)
654 G5740	Kersey Point	On point. 53 46 34.5 128 51 40.1	Fl(3) W	12s 5.7	5	White square skeleton tower.	Flash 0.5 s; eclipse 2 s; flash 0.5 s; eclipse 2 s; flash 0.5 s; eclipse 6.5 s. Year round. Chart:3977 Edn 07/14 (P14-042)
654.2 G5740.1	Hilton Point	On point. 53 48 52.8 128 52 21.1	Fl W	4s 4.9	5	White square skeleton tower.	Year round. Chart:3977 Edn 07/14 (P14-043)
654.5	Nanakwa Shoal ODAS light buoy 46181	53 50 01.2 128 50 01.1	F(5) Y	20s	Yellow, marked "46181".	5(Flash 0.5s; eclipse 1.5s) Eclipse 10s. Year round. Chart:3977 Edn 07/14 (P14-049)

Monthly Notices to Mariners - Western Edition
Edition 07/2014

SECTION 5
LIST OF LIGHTS, BUOYS AND FOG SIGNALS CORRECTIONS

No.	Name	Position ----- Latitude N. Longitude W.	Light Characteristics	Focal Height in m. above water	Nomi- nal Range	Description ----- Height in meters above ground	Remarks ----- Fog Signals
655 G5739.2	Dorothy Island	On island. 53 39 33.7 128 50 37.6	Fl W	6s 4.4	5	White square skeleton tower.	Flash 0.5 s; eclipse 5.5 s. Year round. Chart:3977 Edn 07/14 (P14-044)
656 G5738.2	Rix Island	At northeasterly end of island. 53 31 33.3 128 44 14.7	Fl W	6s 4.5	5	White square skeleton tower.	Flash 0.5 s; eclipse 5.5 s. Year round. Chart:3977 Edn 07/14 (P14-045)
660 G5738	Staniforth Point	On point. 53 34 08.9 128 49 04.9	Fl(3) W	12s 6.9	5	White square skeleton tower with white dayboards on 3 sides.	Flash 0.5 s; eclipse 2 s; flash 0.5 s; eclipse 2 s; flash 0.5 s; eclipse 6.5 s. Year round. Chart:3977 Edn 07/14 (P14-046)
661 G5737.4	Mary Point	On point, Verney Passage. 53 32 59.8 128 58 07.6	Q W	1s 5.7	5	White square skeleton tower with white dayboards on 3 sides.	Year round. Chart:3977 Edn 07/14 (P14-047)
663 G5740.2	Clio Point	On point. 53 54 23.5 128 42 38.3	Fl W	6s 6.7	5	White square skeleton tower.	Flash 0.5 s; eclipse 5.5 s. Year round. Chart:3977 Edn 07/14 (P14-048)
703.7	Philips Point Sector	Entrance to Prince Rupert harbor. 54 15 54.3 130 21 53.4	Q G W G	1s 6.8	5	White square skeleton tower.	Green 167° to 176°40'; White 176°40'; through W. to 337°50'; Green 337°50' to 354°10'; Obscured 354°10' through N. and E. to 167° Privately maintained. Year round. Chart:3958 Edn 07/14

Monthly Notices to Mariners - Western Edition
Edition 07/2014

CANADIAN COAST GUARD MARINE INFORMATION REPORT AND SUGGESTION SHEET.

Name of Ship or Sender: Date:

Address of Sender:
Street # Street Name

Town / City: Prov / State: Postal Code / Zip Code:

Tel / Fax / E-mail address of sender:

Observation Date: Time (UTC):

Geographical Position:

Coordinate Position: Lat: Long:

Position Method: DGPS GPS with WAAS GPS Radar Other

Horizontal Datum Used: WGS 84 NAD 27 Other

Estimated Position Accuracy:

Chart #: Datum: NAD 27 NAD 83

Chart Edition: Last Correction applied:

Publications affected: (Quote Volume and page):

*Full details (Attach additional sheets as necessary)

Mariners are requested to notify the responsible authorities when new or suspected dangers to navigation are discovered, changes are observed in aids to navigation, or corrections to publications are seen to be necessary.

In the case of new or suspected dangers to navigation, it is important that all details be given in order to aid with future investigations. Items of interest include heights, depths, physical description, type of bottom and equipment method used to position the item. It is helpful to mark details on chart, which will be promptly replaced by the Canadian Hydrographic Service.

Reports should be made to the nearest Marine Communications and Traffic Services Centre (MCTS) and should be confirmed in writing to:

Leader, Notices to Mariners
Canadian Coast Guard
Department of Fisheries and Oceans
Montréal, Qc H2Y 2E7

In the case of information concerning aids to navigation
or the List of Lights, Buoys and Fog Signals.

Notmar.XNCR@dfo-mpo.gc.ca

OR

Dominion Hydrographer
Canadian Hydrographic Service
Department of Fisheries and Oceans
Ottawa, Ontario, K1A 0E6

In the case of new or suspected dangers to navigation
or where corrections to "Sailing Directions" appear
to be necessary.

CHSINFO@DFO-MPO.GC.CA

Or general questions on Coast Guard programs or services please send an e-mail message to:
info@dfo-mpo.gc.ca