



Fisheries and Oceans
Canada

Pêches et Océans
Canada

Canadian
Coast Guard

Garde côtière
canadienne

Notices to Mariners

Edition No. 04/2021
April 30, 2021



Safety First, Service Always

Monthly Summary of Temporary and Preliminary Notices

Canada 

Notices to Mariners – Monthly Summary of Temporary and Preliminary Notices
Edition No. 04/2021

Aussi disponible en français :
Avis aux navigateurs – Sommaire mensuel des avis temporaires et préliminaires
Édition n° 04/2021

Published under the Authority of:

Canadian Coast Guard Programs
Aids to Navigation and Waterways
Fisheries and Oceans Canada
Montreal, QC H2Y 2E7

For more information, contact Notmar.XNCR@dfo-mpo.gc.ca.

© Her Majesty the Queen in Right of Canada,
as represented by the Minister of Fisheries, Oceans
and the Canadian Coast Guard, 2021.

Cat. No. Fs151-19E-PDF (Electronic PDF, English)
ISSN 2561-5106

Cat. No. Fs151-19F-PDF (Electronic PDF, French)
ISSN 2561-5114

A web version is available here:

<https://www.notmar.gc.ca/temp-pre-mensuel-en.php> (English)

<https://www.notmar.gc.ca/temp-pre-mensuel-fr.php> (French)

Explanatory Notes

Geographical positions refer directly to the graduations of the largest scale Canadian Hydrographic Service chart (unless otherwise indicated).

Bearings refer to the true compass and are measured clockwise from 000° (North) clockwise to 359°; those relating to lights are from seaward.

Visibility of lights is that in clear weather.

Depths - The units used for soundings (metres, fathoms or feet) are stated in the title of each chart.

Elevations are normally given above Higher High Water, Large Tide (unless otherwise indicated).

Explanation of Temporary and Preliminary Notices to Mariners

Certain Notices to Mariners appearing in the monthly editions have a (T) or (P) appended to the regular number. These letters indicate that the information contained in the notice is of a temporary or preliminary nature, respectively.

Temporary (T) Notices

If a temporary change in conditions affecting navigation exists and if the change will be effective for a period of over three months, a temporary (T) notice will be published. Temporary changes which are effective for periods of less than three months will not normally be published (unless it is of exceptional interest). Otherwise, information will be promulgated as a Navigational Warning (NAVWARN) by the Canadian Coast Guard Marine Communications and Traffic Services (MCTS) Centre(s) in the affected area. (T) notices will be cancelled as necessary.

Please note that (T) notices with an end date will be automatically cancelled once the end date has passed. In the event of a change to these notices, a new Notice to Mariners will be issued.

Preliminary (P) Notices

- a. When important changes affecting navigation are to take place in the near future, a Notice to Mariners describing the change will be published, so that mariners will have advance information on the change. Such notices will be designated (P).
- b. When a change in conditions affecting navigation has taken place but full information is not available, a preliminary (P) notice giving available information will be published. This notice will be followed by a regular notice when complete information becomes available. The regular notice will cancel the (P) notice.
- c. When a change has taken place which is too complex to describe in a written notice, a (P) notice giving general information will be published. This notice will explain that follow up action will be taken to update charts by publishing patch corrections, new editions or new charts.

Please note that following the expiry of the 90-day comment or objection period, (P) notices describing proposed changes or intention to discontinue will be automatically cancelled. In the event of a change to these notices, a new Notice to Mariners will be issued.

Action Required on Receipt Of (T) & (P) Notices

It is not customary to make permanent corrections to charts and publications from (T) & (P) notices. On receipt of such notices, the information they contain should be noted in pencil on the affected charts and/or publications.

Caution

Mariners are reminded that charts and publications are not corrected from (T) & (P) notices when purchased from suppliers. For the list of charts affected by (T) & (P) notices, please refer to the index on page ii of this publication.

Table of Contents

Newfoundland and Labrador Coast **1**

Temporary Notices

No notices applicable for this edition..... 1

Preliminary Notices

*308(P)/21	Hamilton Sound: Eastern Portion / Partie-est – Notice of Proposed Changes	1
*309(P)/21	Garia Bay and / et Le Moine Bay – Light Buoy to be Discontinued.....	1
*310(P)/21	Port aux Basques and Approaches/et les Approches – Light Buoy to be Discontinued..	2
*311(P)/21	Hawkes Bay, Port Saunders, Back Arm – Notice of Proposed Changes.....	2
*312(P)/21	Garia Bay to / à Burgeo – Light Buoy to be Discontinued	2
*313(P)/21	Burgeo and / et Ramea Islands – Notice of Proposed Changes.....	3
*314(P)/21	Carmanville to / à Bacalhoa Island and / et Fogo – Light Buoy to be Discontinued	3
*315(P)/21	St. Lewis Sound and / et Inlet – Light Buoy to be Established.....	3
*316(P)/21	Epinette Point to/à Terrington Basin – Light Buoy to be Discontinued.....	4
*317(P)/21	Alexis Bay and / et Alexis River – Notice of Proposed Changes.....	4
*409(P)/21	Cape St Francis to / à Baccalieu Island and / et Heart's Content – Notice of Proposed Changes	5
*410(P)/21	St. Lewis Sound and / et Inlet – Light Buoys to be Established	6

Atlantic Coast **7**

Temporary Notices

*716(T)/19	Rivière Ristigouche / Restigouche River – Federal Wharf Closed to Navigation.....	7
*111(T)/21	Rivière des Prairies – Construction Operations.....	7
*206(T)/21	Plans, Baie des Chaleurs/Chaleur Bay (côte nord/north shore) – Federal Wharf Closed to Navigation	7
*318(T)/21	Pointe des Monts aux/to Escoumins – Scientific Moorings	7
*411(T)/21	Port de Montréal – Wharf Repair Work.....	7

Preliminary Notices

*319(P)/21	Sydney Harbour – Notice of Proposed Changes.....	8
*320(P)/21	Pictou Harbour and East River of Pictou – Notice of Proposed Changes.....	9
*412(P)/21	Pictou Harbour and East River of Pictou – Unlit Buoy to be Discontinued	9

Inland Waters **10**

Temporary Notices

*909(T)/14	Kingston Harbour and Approaches/et les approches – Dock Unserviceable	10
*1005(T)/15	Port Dalhousie – East and West Piers: Access Forbidden	10
*515(T)/16	Harbours on the East Shore of Lake Superior/Ports sur la rive est du lac Supérieur – Buoys Temporarily Discontinued	10
*814(T)/16	Main Duck Island to/à Scotch Bonnet Island – Partially Submerged Fixed Steel Barges	11
*1011(T)/16	Lake Ontario/Lac Ontario (Western Portion/Partie Ouest) – Silting Reported	11

*1218(T)/16	Hamilton Harbour – Silting Reported	11
*1219(T)/16	Toronto to/à Hamilton – Construction Operations	11
*108(T)/17	Harbours in Lake Erie/Havres dans le lac Érié – Unlit Buoys Temporarily Repositioned	12
*309(T)/17	Pelee Passage to/à la Detroit River – Low Water Levels Reported	12
*1205(T)/17	Toronto Harbour – Breakwater Entrance to Marina Closed Due to the Collapse of the Breakwater	12
*1206(T)/17	Lake Rosseau and/et Lake Joseph – Unlit Buoy Temporary Established	13
*709(T)/18	Kingston Harbour and Approaches/et les approches – Information Regarding Mooring and Anchoring	13
*809(T)/18	Cobourg to/à Oshawa – Dredging Operations.....	13
*816(T)/19	Point Clark to/à Southampton – Obstruction Below the Surface of the Water Reported	13
*1117(T)/19	Lac Saint-Louis – Submerged Objects	13
*314(T)/20	Toronto Harbour – Construction Operations.....	14
*710(T)/20	Murray Canal to Healey Falls Locks / Murray Canal aux Écluses de Healey Falls – Construction Operations	15
*908(T)/20	Smith Falls to/à Kingston including/y compris Tay River to/à Perth – Construction Operations	15
*1012(T)/20	Kingston Harbour and Approaches/et les approches – Construction Operations.....	15
*1210(T)/20	Demarcation Bay to/à Philips Bay – Mobile Offshore Drilling Unit Temporarily Established.....	15
*112(T)/21	Upper Gap to/à Telegraph Narrows – Construction Operations	16
*207(T)/21	Kingston Harbour and Approaches/et les approches – Dredging Operations	16
*413(T)/21	Kingston Harbour and Approaches/et les approches – Aid to navigation temporarily unlit	16
*414(T)/21	Toronto Harbour – Water Intake Pipes	16

Preliminary Notices

No notices applicable for this edition.....	16
---	----

Pacific Coast	17
----------------------	-----------

Temporary Notices

No notices applicable for this edition.....	17
---	----

Preliminary Notices

No notices applicable for this edition.....	17
---	----

Other (T) & (P) Notices	18
------------------------------------	-----------

Temporary Notices

*1105(T)/15	Canada – Safety of Offshore Exploration and Exploitation Vessels	18
*208(T)/21	Canadian Coast Guard – Automatic Identification System (AIS)	18

List of Charts Affected by (T) & (P) Notices

Chart No.	Pages	Chart No.	Pages	Chart No.	Pages
1236	7	2085	12, 14, 16	4825	3
1310	7	2086	11	4850	5
1430	13	2123	12	4862	3
1509	7	2181	12	4921	7
1513	15	2291	13	4938	9
2006	16	2315	10	5031	3, 6
2017	10, 13, 15, 16	4266	8	5165	4
2021	15	4426	7	5179	4
2044	10	4530	1	6022	13
2058	13	4639	1	7661	15
2060	11	4641	2		
2067	11	4679	2		
2077	11	4824	2		

Newfoundland and Labrador Coast

Temporary Notices

No notices applicable for this edition.

Preliminary Notices

Atlantic Region

Comment Submission

Comments on proposed changes in preliminary (P) notices are solicited from mariners and other interested parties within three months of the initial publication date. Following this date, the notices will be cancelled. Any objections raised must state the facts on which they are based and should include supporting information on safety, commerce and public benefit.

Comments should be directed to the following:

Superintendent,
 Aids to Navigation & Waterways
 Canadian Coast Guard, Atlantic Region
 P.O. Box 1236
 Charlottetown, PE C1A 7M8
 Telephone: (902) 566-7936
 Email: claire.maclaren@dfo-mpo.gc.ca

***308(P)/21 Hamilton Sound: Eastern Portion / Partie-est – Notice of Proposed Changes**

Reference chart: 4530

The Canadian Coast Guard proposes to permanently change the following aids to navigation:

Aid Name	LL #	Position	Proposed Changes
Stag Harbour Run light buoy DX	372.6	49° 34' 07.7"N 054° 15' 55.5"W	Establish an East cardinal buoy equipped with a white lantern with flash characteristics: Q(3) 10 s.
Stag Harbour Run light buoy DX7	372.61	49° 33' 37.2"N 054° 16' 29.1"W	Establish a port hand buoy equipped with a green lantern with flash characteristics: Fl 0.5 s, Ec 3.5 s.
Carmanville light buoy DC13	390.131	49° 23' 34.9"N 054° 16' 54.6"W	Change the function of the buoy from port to isolated danger. Change lantern colour from green to white and flash characteristics to: Fl (2) 5 s. Change the aid designator from DC13 to DC.

Initial publication date: Friday, March 26, 2021

[Comment submission deadline](#): Thursday, June 24, 2021

(N2021-013, 014, 047)

***309(P)/21 Garia Bay and / et Le Moine Bay – Light Buoy to be Discontinued**

Reference chart: 4639

The Canadian Coast Guard proposes to permanently discontinue the following aid to navigation:

Aid Name	LL #	Position
Petites light and whistle buoy QT2	149.7	47° 36' 10.0"N 058° 39' 15.2"W

Initial publication date: Friday, March 26, 2021

[Comment submission deadline](#): Thursday, June 24, 2021

(N2021-020)

***310(P)/21 Port aux Basques and Approaches/et les Approches – Light Buoy to be Discontinued**

Reference chart: 4641

The Canadian Coast Guard proposes to permanently discontinue the following aid to navigation:

Aid Name	LL #	Position
Pikes Island Breakwater light buoy QP6	170.5	47° 34' 31.8"N 059° 07' 56.0"W

Initial publication date: Friday, March 26, 2021

[Comment submission deadline](#): Thursday, June 24, 2021

(N2021-015)

***311(P)/21 Hawkes Bay, Port Saunders, Back Arm – Notice of Proposed Changes**

Reference chart: 4679

The Canadian Coast Guard proposes to permanently change the following aid to navigation:

Aid Name	LL #	Position	Proposed Changes
Ardent Rock light buoy XP4	211.7	50° 43' 17.2"N 057° 20' 02.6"W	Reposition buoy to the following position: 50° 43' 17.3"N 057° 20' 01.2"W. Change flash characteristics to Fl 0.3 s, Ec 0.7 s.

Initial publication date: Friday, March 26, 2021

[Comment submission deadline](#): Thursday, June 24, 2021

(N2021-037)

***312(P)/21 Garia Bay to / à Burgeo – Light Buoy to be Discontinued**

Reference chart: 4824

The Canadian Coast Guard proposes to permanently discontinue the following aid to navigation:

Aid Name	LL #	Position
South East Shoal East cardinal light buoy QES	145.88	47° 37' 58.5"N 058° 20' 44.8"W

Initial publication date: Friday, March 26, 2021

[Comment submission deadline](#): Thursday, June 24, 2021

(N2021-019)

***313(P)/21 Burgeo and / et Ramea Islands – Notice of Proposed Changes**

Reference chart: 4825

The Canadian Coast Guard proposes to permanently change the following aids to navigation:

Aid Name	LL #	Position	Proposed Changes
Boar Rock light and bell buoy QG2	143	47° 35' 32.5"N 057° 33' 42.5"W	Change lantern colour from red to white and flash characteristics to: Fl (2) 5 s. Change the function of the buoy from starboard to isolated danger. Discontinue the bell.
Fish Island Rock light and bell buoy QG3	143.5	47° 37' 03.7"N 057 35' 06.9"W	Reduce the size of the buoy. Discontinue the bell.
Shoal Short Reach light buoy QG5.1	143.71	47° 37' 01.1"N 057° 36' 25.1"W	Reposition buoy to the following position: 47° 37' 01.4"N 057° 36' 26.6"W. Change flash characteristics to Fl 0.3 s, Ec 0.7 s.
Harbour Shoal light buoy QG5.3	143.74	47° 36' 49.4"N 057° 36' 25.5"W	Establish a port hand buoy equipped with a green lantern with flash characteristics: Fl 0.5 s, Ec 3.5 s.

Initial publication date: Friday, March 26, 2021

[Comment submission deadline](#): Thursday, June 24, 2021

(N2021-025, 026, 027, 029)

***314(P)/21 Carmanville to / à Bacalhoa Island and / et Fogo – Light Buoy to be Discontinued**

Reference chart: 4862

The Canadian Coast Guard proposes to permanently discontinue the following aid to navigation:

Aid Name	LL #	Position
Noggin Cove light buoy DN2	388.1	49° 25' 01.8"N 054° 18' 38.6"W

Initial publication date: Friday, March 26, 2021

[Comment submission deadline](#): Thursday, June 24, 2021

(N2021-022)

***315(P)/21 St. Lewis Sound and / et Inlet – Light Buoy to be Established**

Reference chart: 5031

The Canadian Coast Guard proposes to permanently establish the following aid to navigation:

Aid Name	LL #	Position	Notes
Hussey Shoal light buoy NUB1	278.1	52° 17' 27.0"N 055° 35' 24.0"W	Establish a port hand buoy equipped with a green lantern with flash characteristics: Fl 0.5 s, Ec 3.5 s.

Initial publication date: Friday, March 26, 2021

[Comment submission deadline](#): Thursday, June 24, 2021

(N2021-048)

***316(P)/21 Epinette Point to/à Terrington Basin – Light Buoy to be Discontinued**

Reference chart: 5165

The Canadian Coast Guard proposes to permanently discontinue the following aid to navigation:

Aid Name	LL #	Position
Blake Shoal light buoy H6	297.4	53° 34' 22.2"N 059° 56' 42.6"W

Initial publication date: Friday, March 26, 2021

[Comment submission deadline](#): Thursday, June 24, 2021

(N2021-017)

***317(P)/21 Alexis Bay and / et Alexis River – Notice of Proposed Changes**

Reference chart: 5179

The Canadian Coast Guard proposes to permanently change the following aids to navigation:

Aid Name	LL #	Position	Proposed Changes
Red Point Bank light buoy NW1	270.4	52° 31' 21.7"N 055° 44' 21.7"W	Change the buoy function from port hand to East cardinal. Change flash characteristics to Q(3) 10 s. Change the aid designator from NW1 to NWW.
Mad Moll Rocks North Cardinal light buoy NA	270.45	52° 30' 28.8"N 055° 43' 51.0"W	Change the buoy function from North cardinal to port hand. Change flash characteristics to FI 0.5 s, Ec 3.5 s. Change the aid designator from NA to NA1/1.
Groves Island Tickle North light buoy NA8	271	52° 32' 22.9"N 056° 09' 21.5"W	Reduce the size of the buoy.
Groves Island Tickle South light buoy NA9	272	52° 32' 06.7"N 056° 09' 35.8"W	Reduce the size of the buoy.
Port Hope Simson light buoy NA13	272.7	52° 36' 26.7"N 056° 13' 41.3"W	Establish a port hand buoy equipped with a green lantern with flash characteristics: FI 0.5 s, Ec 3.5.

Initial publication date: Friday, March 26, 2021

[Comment submission deadline](#): Thursday, June 24, 2021

(N2021-044)

***409(P)/21 Cape St Francis to / à Baccalieu Island and / et Heart's Content – Notice of Proposed Changes**

Reference chart: 4850

The Canadian Coast Guard proposes to permanently change the following aids to navigation:

Aid Name	LL #	Position	Proposed Changes
Old Perlican Inner light buoy TP7	470.51	48° 05' 15.7"N 053° 00' 30.8"W	Reposition buoy to the following position: 48° 05' 15.3"N 053° 00' 31.4"W. Change the aid designator from TP7 to TP9.
Old Perlican Inner Harbour light buoy TP9	470.53	48° 05' 16.7"N 053° 00' 27.5"W	Reposition buoy to the following position: 48° 05' 17.8"N 053° 00' 27.5"W. Change the aid designator from TP9 to TP11.
Old Perlican Inner light buoy TP11	470.54	48° 05' 17.8"N 053° 00' 25.9"W	Discontinue buoy and replace with buoy TP (LL 470.52).
Old Perlican Inner light buoy TP4	470.71	48° 05' 18.4"N 053° 00' 48.3"W	Reposition buoy to the following position: 48° 05' 18.9"N 053° 00' 48.2"W. Change the aid designator from TP4 to TP6.
Old Perlican Inner light buoy TP5	470.72	48° 05' 20.1"N 053° 00' 48.0"W	Reposition buoy to the following position: 48° 05' 19.8"N 053° 00' 47.9"W. Change the aid designator from TP5 to TP7.
Old Perlican Outer light buoy TP2	470.73	48° 05' 22.1"N 053° 00' 51.1"W	Reposition buoy to the following position: 48° 05' 25.5"N 053° 00' 53.4"W. Change the aid designator from TP2 to TP4.
Old Perlican Outer light buoy TP3	470.74	48° 05' 21.0"N 053° 00' 48.0"W	Reposition buoy to the following position: 48° 05' 25.7"N 053° 00' 51.8"W. Change the aid designator from TP3 to TP5.
Old Perlican outer light buoy TP3	470.75	48° 05' 30.2"N 053° 00' 57.2"W	Establish a port hand buoy equipped with a green lantern with flash characteristics: Fl 0.5 s, Ec 3.5 s.
Old Perlican outer light buoy TP2	470.76	48° 05' 33.5"N 053° 01' 05.2"W	Establish a starboard hand buoy equipped with a red lantern with flash characteristics: Fl 0.5 s, Ec 3.5 s.

Initial publication date: Friday, April 30, 2021

[Comment submission deadline](#): Thursday, July 29, 2021

(N2021-038, 046)

***410(P)/21 St. Lewis Sound and / et Inlet – Light Buoys to be Established**

Reference chart: 5031

The Canadian Coast Guard proposes to permanently establish the following aids to navigation:

Aid Name	LL #	Position	Proposed Changes
Fox Harbour light buoy NF1	276.3	52° 21' 37.2"N 055° 41' 49.6"W	Establish a port hand buoy equipped with a green lantern with flash characteristics: Fl 0.5 s, Ec 3.5 s.
Shag Rocks light buoy NMS2	276.55	52° 20' 26.0"N 055° 44' 32.2"W	Establish a starboard hand buoy equipped with a red lantern with flash characteristics: Fl 0.5 s, Ec 3.5 s.

Initial publication date: Friday, April 30, 2021

[Comment submission deadline](#): Thursday, July 29, 2021

(N2021-032, 033)

Atlantic Coast

Temporary Notices

***716(T)/19 Rivière Ristigouche / Restigouche River – Federal Wharf Closed to Navigation**

Reference chart: 4426

The federal wharf at Miguasha is closed to navigation. For reasons of safety and because of the collapsing risk, it is not permitted to berth at the wharf or to come closer than 20 metres from these structures.

For more information, please contact the regional representative of port operations at Transport Canada, Quebec region, Mme Myriam Rouleau at 418-446-8402.

(NAVWARN NW-Q-0318-16)

***111(T)/21 Rivière des Prairies – Construction Operations**

Reference chart: 1509

Repair work is taking place 24 hours a day at the Pie-IX bridge as of August 17th, 2020.

Buoys, jetties, and a turbidity curtain are in place.

(NW-Q-1112-20)

***206(T)/21 Plans, Baie des Chaleurs/Chaleur Bay (côte nord/north shore) – Federal Wharf Closed to Navigation**

Reference: Notice *1118/19 is cancelled.

Reference chart: 4921

The federal wharf at Chandler is closed to navigation. For safety reasons, it is not permitted to berth at the wharf.

For more information, please contact Mr. Simon Bilodeau at Transport Canada at 418-563-2325 or by email at the following address: simon.bilodeau@tc.gc.ca.

(NAVWARN NW-Q-1580-16)

***318(T)/21 Pointe des Monts aux/to Escoumins – Scientific Moorings**

Reference chart: 1236

Over 80 underwater scientific moorings have been placed in the area delimited by the following positions:

Pt 1:	49° 18' 00.7"N	067° 40' 03.6"W
Pt 2:	49° 18' 12.0"N	067° 43' 30.8"W
Pt 3:	49° 17' 31.3"N	067° 43' 32.4"W
Pt 4:	49° 17' 25.3"N	067° 40' 15.5"W

(NW-Q-0968-20)

***411(T)/21 Port de Montréal – Wharf Repair Work**

Reference chart: 1310

Repair work on the wharf in section 28 is underway. Barges are on site. Mooring is prohibited.

Position 1:	45° 31' 12.9"N	073° 32' 42.1"W
Position 2:	45° 31' 20.7"N	073° 32' 39.6"W

(NW-Q-0288-21)

Preliminary Notices

Atlantic Region

Comment Submission

Comments on proposed changes in preliminary (P) notices are solicited from mariners and other interested parties within three months of the initial publication date. Following this date, the notices will be cancelled. Any objections raised must state the facts on which they are based and should include supporting information on safety, commerce and public benefit.

Comments should be directed to the following:

Superintendent,
Aids to Navigation & Waterways
Canadian Coast Guard, Atlantic Region
P.O. Box 1236
Charlottetown, PE C1A 7M8
Telephone: (902) 566-7936
Email: claire.maclaren@dfo-mpo.gc.ca

***319(P)/21 Sydney Harbour – Notice of Proposed Changes**

Reference chart: 4266

The Canadian Coast Guard proposes to permanently change the following aids to navigation:

Aid Name	LL #	Position	Proposed Changes
Sydney Northwest Bar light buoy S6	779	46° 12' 28.6"N 060° 14' 01.3"W	Reposition buoy to the following position: 46° 12' 27.0"N 060° 14' 04.4"W. Change flash characteristics to Fl 0.3 s, Ec 0.7 s. Increase intensity of lantern. Change the aid designator.
Northwest Bar light buoy SD2	779.4	46° 12' 32.8"N 060° 14' 10.3"W	Discontinue buoy.
Barachois light buoy S14	785.5	46° 09' 32.8"N 060° 12' 53.0"W	Change the period of service from seasonal to year round.
Battery Point light buoy S15	786	46° 08' 53.5"N 060° 12' 26.5"W	Reposition buoy to the following position: 46° 08' 56.6"N 060° 12' 28.2"W. Increase intensity of lantern. Change the period of service from seasonal to year round.
Shingle Point light buoy S18	787	46° 08' 27.7"N 060° 12' 13.7"W	Change the period of service from seasonal to year round.
Cran Rock light buoy S2	789	46° 16' 25.6"N 060° 11' 29.1"W	Increase intensity of lantern.
Allen Point buoy SA8	5777.02	46° 11' 27.5"N 060° 15' 49.0"W	Add a red lantern with flash characteristics Fl 0.5 s, Ec 3.5 s. Change the period of service from year round to seasonal.
Sydney River buoy S23	5777.04	46° 07' 18.5"N 060° 12' 38.0"W	Reduce the size of the buoy. Change the period of service from year round to seasonal.
Sydney River buoy S24	5777.05	46° 07' 21.5"N 060° 12' 51.5"W	Reduce the size of the buoy. Change the period of service from year round to seasonal.
South Bar South Cardinal buoy SS	5787.21	46° 12' 09.1"N 060° 13' 04.9"W	Add a white lantern with flash characteristics Q(6) + LFI 15 s.

Initial publication date: Friday, March 26, 2021

Comment submission deadline: Thursday, June 24, 2021

(G2021-019)

***320(P)/21 Pictou Harbour and East River of Pictou – Notice of Proposed Changes**

Reference chart: 4938

The Canadian Coast Guard proposes to permanently change the following aids to navigation:

Aid Name	LL #	Position	Proposed Changes
Pictou light buoy SJ	900.5	45° 42' 10.0"N 062° 36' 45.0"W	Reposition buoy to the following position: 45° 42' 30.6"N 062° 36' 51.9"W.
Pictou Harbour light buoy SJ4	901	45° 41' 33.0"N 062° 38' 37.0"W	Reposition buoy to the following position: 45° 41' 34.8"N 062° 38' 33.0"W.
Pictou Harbour light buoy SJ5	901.1	45° 41' 27.9"N 062° 39' 01.2"W	Establish a port hand buoy equipped with a green lantern with flash characteristics: FI 0.5 s, Ec 3.5 s.
Murdock Shoal light buoy SJ6	901.6	45° 41' 27.3"N 062° 39' 30.7"W	Decrease intensity of lantern.
Pictou Landing light buoy SJ11	905	45° 40' 52.3"N 062° 40' 43.7"W	Reposition buoy to the following position: 45° 40' 55.8"N 062° 40' 34.2"W. Decrease intensity of lantern.
Pictou Harbour light buoy SJ12	905.2	45° 40' 51.5"N 062° 41' 30.5"W	Reposition buoy to the following position: 45° 40' 49.4"N 062° 41' 28.1"W. Change flash characteristics to FI 0.3 s, Ec 0.7 s.
Pictou Harbour light buoy SJ15	905.3	45° 40' 38.7"N 062° 41' 04.7"W	Reposition buoy to the following position: 45° 40' 38.6"N 062° 41' 00.1"W. Change flash characteristics to FI 0.3 s, Ec 0.7 s. Decrease intensity of lantern.
Hector Quay light buoy SJD	905.55	45° 40' 17.1"N 062° 42' 41.0"W	Establish an isolated danger buoy equipped with a white lantern with flash characteristics: FI (2) 5 s.
Pictou Landing Buoy SH2	5905.45	45° 40' 35.6"N 062° 41' 01.7"W	Establish an unlit starboard hand buoy .
Shipyard Point buoy SJ46	5910.6	45° 36' 50.7"N 062° 38' 48.2"W	Reposition buoy to the following position: 45° 36' 49.1"N 062° 38' 45.0"W.

Initial publication date: Friday, March 26, 2021

[Comment submission deadline](#): Thursday, June 24, 2021

(G2021-022)

***412(P)/21 Pictou Harbour and East River of Pictou – Unlit Buoy to be Discontinued**

Reference chart: 4938

The Canadian Coast Guard proposes to permanently discontinue the following aid to navigation:

Aid Name	LL #	Position
Pictou River buoy SJ18	5905.5	45° 40' 15.8"N 062° 42' 39.7"W

Initial publication date: Friday, April 30, 2021

[Comment submission deadline](#): Thursday, July 29, 2021

(G2021-020P)

Inland Waters

Temporary Notices

***909(T)/14 Kingston Harbour and Approaches/et les approches – Dock Unserviceable**

Reference chart: 2017

The Kingston psychiatric hospital dock is unserviceable and out of bounds for use as dockage until further notice.

(NOTSHIP C2409/10)

***1005(T)/15 Port Dalhousie – East and West Piers: Access Forbidden**

Reference chart: 2044

A recent engineering investigation identified structural issues and safety concerns with both the East and West piers at Port Dalhousie. In light of the inspection findings, the Department of Fisheries and Oceans is taking action to protect the safety of the public by prohibiting vessel, vehicular, and pedestrian access to the piers.

Vessels can still safely navigate the waters surrounding the piers, but will be unable to moor at the piers. The City of St. Catharines will accommodate boaters as possible at other local wharves.

Mark Sandeman
Area Manager, Client Services
Small Craft Harbours
Central & Arctic Region
Fisheries and Oceans Canada

3027 Harvester Road, Unit 310
Burlington, ON L7N 3G7
Telephone: (905) 639-2050
Facsimile: (905) 639-5975
Email: mark.sandeman@dfp-mpo.gc.ca

(NOTSHIP C567/15)

***515(T)/16 Harbours on the East Shore of Lake Superior/Ports sur la rive est du lac Supérieur – Buoys Temporarily Discontinued**

Reference chart: 2315

The Canadian Coast Guard has temporarily discontinued the following aids to navigation:

XT1, XT2, XT3, XT4, XT5, XT6, XT7, XT8, XT9, XT10, XT11, XT12.

(NOTSHIP C1045)

***814(T)/16 Main Duck Island to/à Scotch Bonnet Island – Partially Submerged Fixed Steel Barges**

Reference chart: 2060

There are 3 partially submerged fixed steel barges in North end of West Lake (43° 57' 02.3"N 077° 20' 12.8"W), which have been reported just below the water line.

Barges are marked with cautionary buoys.

(NOTSHIP C1641/14)

***1011(T)/16 Lake Ontario/Lac Ontario (Western Portion/Partie Ouest) – Silting Reported**

Reference chart: 2077

Silting reported in main entrance channel to Fifty Point Marina. Centre of channel depth reported to be 1.9 metres with shallower depths on the sides.

Mariners are requested to use caution in the area.

(NOTSHIP C2266/16)

***1218(T)/16 Hamilton Harbour – Silting Reported**

Reference chart: 2067

Silting reported along the North faces of Pier 11 and Pier 12:

Pier 11 North Face between positions 43° 16' 31"N 079° 50' 56"W and 43° 16' 29"N 079° 50' 49"W, and at position 43° 16' 28"N 079° 50' 42"W.

Pier 12 North Face between positions 43° 16' 27"N 079° 50' 39"W and 43° 16' 26"N 079° 50' 33"W.

Mariners are requested to use caution and reduce speed upon arrival and departure. Seaway draft will be affected when water level is less than 0.70 metres above chart datum in these areas.

(NOTSHIP C1831/13)

***1219(T)/16 Toronto to/à Hamilton – Construction Operations**

Reference chart: 2086

Construction operations taking place from November 14, 2016 until approximately 2026 at Lakeview Water Treatment Plant between Marie Curtis Park and Serson Creek. A variety of equipment will be used to expand the land mass along the shoreline. Landfill and 3 islands will be lit and marked.

(NOTSHIP C2533/16)

***108(T)/17 Harbours in Lake Erie/Havres dans le lac Érié – Unlit Buoys Temporarily Repositioned**

Reference chart: 2181

The following unlit spar buoys have been temporarily repositioned due to silting:

Aid Name	LL #	Temporary Changes
ES2	7169	Reposition to 42° 39' 10.0"N 081° 12' 32.0"W
ES3	7170	Reposition to 42° 39' 15.4"N 081° 12' 40.7"W
ES4	7171	Reposition to 42° 39' 16.8"N 081° 12' 37.7"W

The shallowest depth to 3.5M occurs between ES3 and ES4 with the deepest water off the red side of the channel. Mariners are requested to use caution in the area.

(B2017-003)

***309(T)/17 Pelee Passage to/à la Detroit River – Low Water Levels Reported**

Reference chart: 2123

Low water levels have been reported from the south end of the entrance to Sturgeon Creek Harbour northward.

Annette Winter
Project and Divestiture Officer
Small Craft Harbours
Fisheries and Oceans Canada

Canada Centre for Inland Waters (CCIW)
867 Lakeshore Road
Burlington, ON L7S 1A1
Telephone: (905) 315-5286
Email: annette.winter@dfo-mpo.gc.ca

(NOTSHIP C58/13)

***1205(T)/17 Toronto Harbour – Breakwater Entrance to Marina Closed Due to the Collapse of the Breakwater**

Reference chart: 2085

The breakwater entrance to the west of Ontario Place Marina has been closed due to the collapse of the breakwater.

Sub-surface hazards exist in the breakwater gap and on the inner and outer edge of the breakwater wall.

Green spar buoy BW1 has been removed, and 3 white and orange keep out markers have been placed in the breakwater entrance.

The outer edge of the breakwater wall is marked with 2 white and orange keep out markers.

The inner edge of the breakwater wall is marked with 3 white and orange keep out markers.

(NOTSHIP C79/13)

***1206(T)/17 Lake Rosseau and/et Lake Joseph – Unlit Buoy Temporary Established**

Reference chart: 6022

The following unlit buoy has been temporary established:

Aid Name	LL #	Position
P3/1	9089.1	45° 08' 09.0"N 079° 40' 36.0"W

(D2017-006)

***709(T)/18 Kingston Harbour and Approaches/et les approches – Information Regarding Mooring and Anchoring**

Reference: Notice 309(T)/14 is cancelled.

Reference chart: 2017

All mooring or anchoring within the public port of Kingston is prohibited outside of designated marina areas until further notice without authorization from the port official.

Inquiries are to be directed to Transport Canada at (416) 952-0475.

***809(T)/18 Cobourg to/à Oshawa – Dredging Operations**

Reference chart: 2058

Dredging operations in Port Hope Harbour from August 3, 2018 until December 30, 2022. A wave attenuator will block the entrance to the western basin.

Mariners are requested to stay clear of the area.

(NOTSHIP C1951/18)

***816(T)/19 Point Clark to/à Southampton – Obstruction Below the Surface of the Water Reported**

Reference chart: 2291

A fixed concrete obstruction just below the surface of the water has been reported in the Saugeen River west of highway 21 at the following position: 44° 30' 01.7"N 081° 22' 07.7"W. Mariners are requested to use caution in the area.

(NAVWARN NW-C-2508-15)

***1117(T)/19 Lac Saint-Louis – Submerged Objects**

Reference chart: 1430

Fifty-three anchorage blocks and chains reported on the seabed in the vicinity of the Beauharnois Marina in the following area:

Position

Pt 1: 45° 19' 02.4"N 073° 52' 34.0"W

Pt 2: 45° 19' 02.3"N 073° 52' 39.5"W

Pt 3: 45° 19' 07.3"N 073° 52' 39.7"W

Pt 4: 45° 19' 07.3"N 073° 52' 34.1"W

(NAVWARN NW-Q-1339-19)

***314(T)/20 Toronto Harbour – Construction Operations**

Reference: Notice 209(T)/20 is now cancelled.

Reference chart: 2085

Construction is taking place at Ashbridge's Bay and consists of the construction of two breakwaters and of a landform. A variety of equipment will be used, including tug boats and barges. Temporary aids to navigation will be placed prior to and during construction. The operations are scheduled to take at the following positions:

Breakwater construction operations

43° 39' 20.7"N 079° 18' 48.1"W

Phase 1: 2020-04-01 through 2020-12-31

Phase 2: 2021-04-01 through 2021-12-31

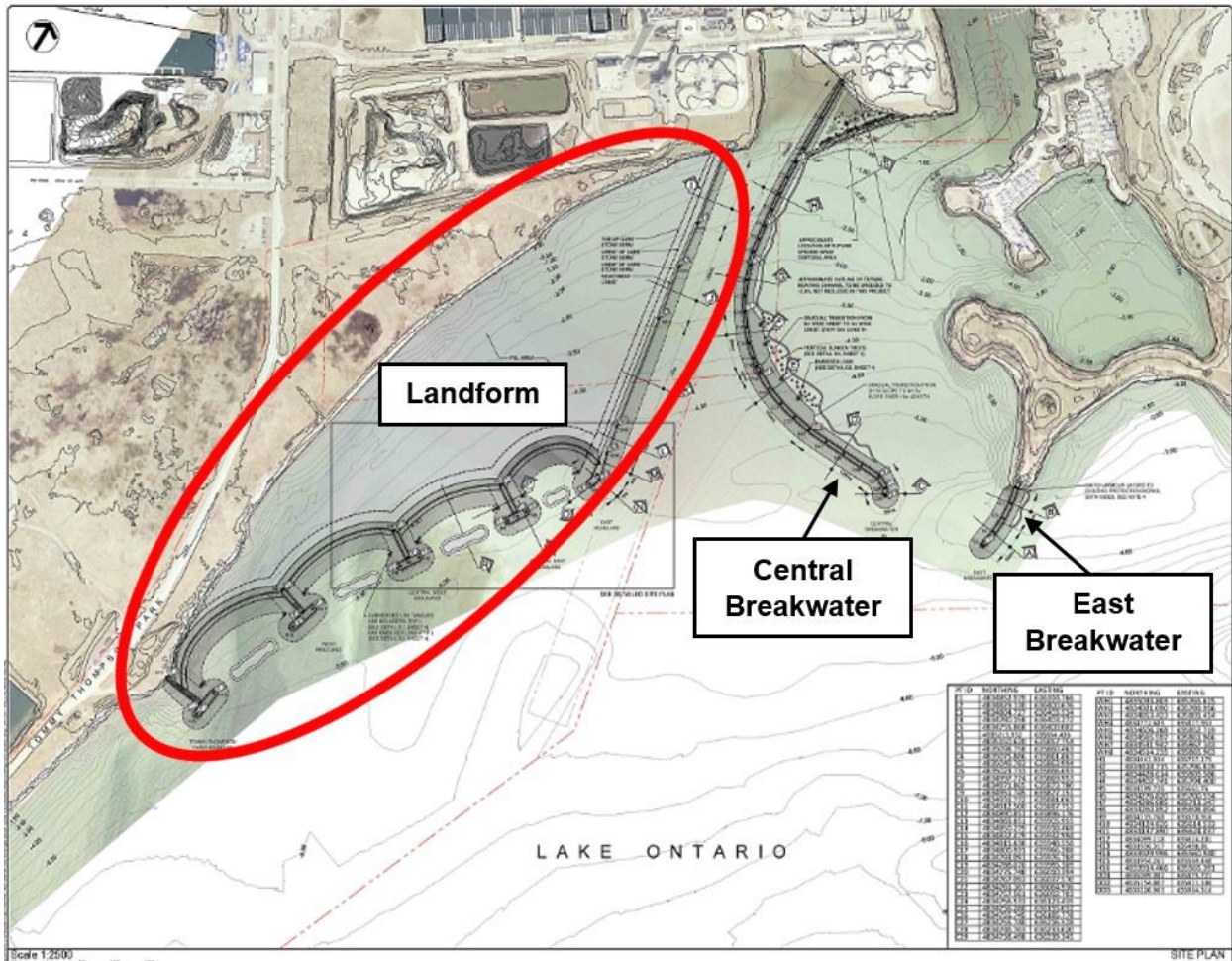
Phase 3: 2022-04-01 through 2022-12-31

Landform construction operations

43° 39' 01.4"N 079° 19' 01.9"W

Implementation of the shoreline infill area is expected to take approximately five years.

Mariners are requested to keep out of the construction zone.



***710(T)/20 Murray Canal to Healey Falls Locks / Murray Canal aux Écluses de Healey Falls – Construction Operations**

Reference chart: 2021

Construction operations, including diving operations, in progress as of July 6, 2020 between 1100 UTC and 0100 UTC at the mouth of the Trent River south of Dundas Street bridge in Trenton. The site is marked with red, green and white markers. Tug and barge on site, lit at night.

Vessels are advised to use caution when transiting the area and to keep clear of construction operations. Call 416-729-8830 for further details.

(NW-C-1012-20)

***908(T)/20 Smith Falls to/à Kingston including/y compris Tay River to/à Perth – Construction Operations**

Reference chart: 1513

Temporary closures of up to 30 minutes are expected in the navigation channel at the Third Crossing Bridge construction site. Spotter boats will be positioned 100 metres north and south of the bridge during work hours.

Installation of a temporary causeway is taking place between 44° 15.41'N 076° 28.78'W and 44° 15.52'N 076° 27.99'W.

(NW-C-3042-19, NW-C-1479-20)

***1012(T)/20 Kingston Harbour and Approaches/et les approches – Construction Operations**

Reference chart: 2017

Wharf construction is taking place daily from 1100 UTC to 2300 UTC at the Kingston-Wolfe Island ferry terminal. The ferry remains operational. Vessels are not permitted to dock on the south side. The construction area is marked and lit.

(NW-C-1786-20)

***1210(T)/20 Demarcation Bay to/à Philips Bay – Mobile Offshore Drilling Unit Temporarily Established**

Reference: Notice 616(T)/07 is cancelled.

Reference chart: 7661

The unmanned mobile offshore drilling unit “SDC” continues to be temporarily established at 69° 24.71'N 138° 53.76'W. The structure is 202.4 metres long and 53 metres wide.

For information, contact Captain Connelly at 1-250-598-4513 or 1-250-744-9818 or e-mail at doncon@islandnet.com or dcmarine@shaw.ca.

***112(T)/21 Upper Gap to/à Telegraph Narrows – Construction Operations**

Reference chart: 2006

Construction operations are currently underway on the Bay of Quinte Skyway Bridge.

During these operations, lit barges are on site and the bridge clearance is 19 metres.

(NW-C-2834-19)

***207(T)/21 Kingston Harbour and Approaches/et les approches – Dredging Operations**

Reference chart: 2017

Dredging operations are taking place between Kingston and Wolfe Island Monday to Saturday from 1100 UTC until 2300 UTC. Tug, barge and two dump scows are on site, monitoring VHF channels 16 and 06.

(NW-C-1238-20)

***413(T)/21 Kingston Harbour and Approaches/et les approches – Aid to navigation temporarily unlit**

Reference chart: 2017

The following aid to navigation is temporarily unlit:

Marysville Wharf light (LL 399.3): 44° 11' 42.4"N 076° 26' 27.3"W

(NW-C-1802-20)

***414(T)/21 Toronto Harbour – Water Intake Pipes**

Reference chart: 2085

Installation of marked water intake pipes is taking place until November 16, 2021 at the following positions:

Position 1:	43° 39' 03.1"N	079° 20' 49.8"W
Position 2:	43° 38' 31.7"N	079° 20' 55.4"W
Position 3:	43° 38' 51.4"N	079° 21' 14.6"W
Position 4:	43° 38' 37.1"N	079° 21' 05.3"W
Position 5:	43° 38' 35.6"N	079° 21' 14.9"W
Position 6:	43° 38' 49.6"N	079° 21' 18.2"W
Position 7:	43° 39' 08.2"N	079° 20' 55.7"W
Position 8:	43° 38' 57.5"N	079° 21' 00.0"W
Position 9:	43° 38' 40.2"N	079° 20' 40.3"W
Position 10:	43° 38' 44.4"N	079° 20' 33.2"W

Stay clear.

(NW-C-2263-20)

Preliminary Notices

No notices applicable for this edition.

Pacific Coast

Temporary Notices

No notices applicable for this edition.

Preliminary Notices

No notices applicable for this edition.

Other (T) & (P) Notices

Temporary Notices

***1105(T)/15 Canada – Safety of Offshore Exploration and Exploitation Vessels**

Reference: Notice 410(T)/2007 is cancelled.

2015 Annual Edition of Notices to Mariners, Notice No. 20, pages A20-1 to A20-4.

Mariners are advised that offshore exploration and exploitation vessels may be conducting drilling operations in the following areas:

Gulf of St. Lawrence

NIL

Mainland NWT

NIL

Mackenzie Delta NWT/Beaufort Sea

NIL

Arctic Islands of the NWT/Arctic Islands of Nunavut

NIL

Eastern Arctic Offshore

NIL

Davis Strait

NIL

NOTE: Mariners are advised to obtain up-to-date position reports on drilling vessels and production installations before entering an area of exploration and exploitation. This information is available by contacting, as appropriate, ECAREG CANADA, NORDREG CANADA or CVTS OFFSHORE via any Marine Communications and Traffic Services Centre (MCTS).

(NOTSHIP M2215/15) (NEB)

***208(T)/21 Canadian Coast Guard – Automatic Identification System (AIS)**

Reference: Notice *819(T)/16 is cancelled.

AIS Aids to Navigation (AtoNs)

Mariners are advised that the Canadian Coast Guard (CCG) is continuing to conduct supervised test beds of AIS AtoNs, with the objective of bringing AIS AtoNs to Full Operational Capability (FOC). Specific information on AIS AtoN test bed sites can be found on the CCG e-Navigation Maritime Information Portal at <http://www.marinfo.gc.ca/e-nav/docs/ais-aton-locations-eng.php>.

Although AIS was originally developed as a collision avoidance tool for vessels, it also allows for the broadcasting of other types of data, such as the AIS AtoN “Message 21” (AIS AtoN Report).

Ships need to be equipped with standard shipborne AIS equipment for the display of AIS messages. The IMO mandatory carriage requirement for the Class “A” AIS display is the Minimum Keyboard Display (MKD), however, the display and use of the AtoN information may require additional hardware and/or software such as an AIS-connected Electronic Chart Display and Information System (ECDIS), Electronic Chart System (ECS), Radar or Portable Pilot Unit (PPU).

As the AIS information available to mariners will be dependent on their display system and its compliance with the latest IMO and IALA standards, some transmitted information may not be displayed or may have a different symbol. Mariners are encouraged to install and upgrade systems that provide AIS overlay on ECDIS, ECS and/or Radar. Mariners should be familiar with the display settings on their vessel's shipborne equipment.

All geographical positions (latitude and longitude) are based on the WGS 84 datum; time is displayed in Coordinated Universal Time (UTC).

CCG is making every effort to broadcast quality information; however, as with any navigational tool, mariners should not rely on this information as their sole means of navigation.

Mariners are advised to consult the CCG e-Navigation web page on AIS AtoN, accessible at <http://www.marinfo.gc.ca/e-nav/docs/ais-aton-index-eng.php> for pertinent information, including examples of AIS AtoN display and symbology.

Individual NAVWARNs and/or NOTMARs are rarely issued for AIS AtoN trials.

Mariners are requested to provide feedback on the AIS AtoN test beds to the CCG e-Navigation Team at ccg.enav.gcc@dfo-mpo.gc.ca. In addition, mariners who wish to participate in CCG's questionnaire on AIS AtoN are invited to access it at <http://www.marinfo.gc.ca/e-nav/docs/asm-aton-survey-eng.php>. The collected results will guide the CCG in further developing this information service.